

**STEEL & BARNETT**

Handcrafted in Belgium





# INDEX

<b>The Story</b>	<b>4.</b>
<b>Our Values</b>	<b>8.</b>
<b>Mix &amp; Match</b>	<b>12.</b>
<b>Global Impact</b>	<b>16.</b>
<b>Collections</b>	<b>17.</b>
Harrison	17.
Natural Ned	18.
Luke Landon	19.
Colorful Cal	20.
Riley	21.
Svelte Stephen	22.
Valence Vic	22.
Urban Edge	22.
Riptide	23.
Two Tone	24.
Bonacci	25.
Grady	26.
Lake	27.
Denby	28.
Essentials	29.
Preston	31.
<b>POS Displays</b>	<b>32.</b>
<b>Contact</b>	<b>34.</b>





## Founders & Owners

Steffie and Yoshi

# OUR STORY

Since 2015, Steel & Barnett had focused on creating wrist outfits with different raw materials, focusing on items that are not only inspired by natural elements but also timeless, classic designs. Originally started as a personal project by two young entrepreneurs, Yoshi and Steffie. STEEL & BARNETT is growing into a global brand, providing signature, exceptional, leather wrist bracelets for discerning customers aligned with timeless styles.

From humble beginnings to business success...

We started STEEL & BARNETT in 2015 in a small home office, initially creating some beaded bracelets for friends and family. Both of us were still working full-time and saw this project as an opportunity to create an additional income stream that could potentially evolve into something more. We threaded the first 50,000 pearls, but the story didn't end there: our initial side hustle transformed into a fully-fledged business. Today, our brand has about 1000+ retailers worldwide - and we are still growing!















# MIX & MATCH

# MATCH IX &

# MIX & MATCH



For a more fashion-forward and eye-catching look, experiment with bracelet stacking. Stacking multiple bracelets on one wrist allows you to create a unique and personalized combination that showcases your style and creativity. To achieve an effortlessly cool vibe, start by stacking three to four bracelets that share a common theme or color palette. For example, you can mix and match different beaded bracelets with complementary colors or combine leather and metal bracelets for a textured look. Play with different textures, materials, and widths to create visual interest. However, be mindful of balance and avoid overcrowding your wrist. Find the right balance between too few and too many bracelets to create a well-curated and fashionable stack.









Global sourcing premium materials,  
starting from South Africa to Denmark.



Our manufacturing facility is equipped with sophisticated machinery and a pool of talented manpower. This combination produces high quality genuine leather.



Specializing in semi-precious stones. We only use A-grade polished, frosted and matte beads for the production of our stone bracelets.



All metals we used for production of our bracelets are 316L stainless steel.

India  
The Netherlands  
Denmark  
China

Germany  
Belgium  
United States  
South-Africa

## HARRISON

*Crafted from soft genuine Nappa leather, perfectly braided and available in a range of solid colors, Harrison is the epitome of clean simplicity. The signature clasp featuring the engraved STEEL & BARNETT logo, along with the slide ring carrying our SB initials logo, exudes premium sophistication.*



LBH/001 - Black



LBH/003 - Brown



LBH/004 - Peanut



LBH/005 - Dark Gray



LBH/006 - Jeans Blue



# NATURAL NED

Natural Ned knows a good thing when he sees it. A champion of naturally-infused style, there is a reason why he is part of the Steel & Barnett essentials collection. Designed with natural stone beads in earthy tones, Natural Ned is a perfect fit for those who prefer accessories inspired by nature.



SBNN/001 - Matt Black



SBNN/002 - Black | Gold



SBNN/003 - Matt Bronzite



SBNN/004 - Dragon Blood



SBNN/005 - Matt Tiger



SBNN/006 - Matt Sodalite

# LUKE LANDON

The ultimate fashionable chameleon. Luke Landon shows off his style skills in trendy colours, with bracelet options available with silver and gold clasps showcasing the Steel & Barnett logo. Made from soft, spongy Nappa leather, Luke Landon is a comfortable accessory to wear - whether you display it on its own, or stack it with similar high-quality bracelets.



LBLL/001 - Black | Silver



LBLL/002 - Black | Gold



LBLL/003 - Brown | Silver



LBLL/004 - Brown | Gold



LBLL/005 - Peanut



LBLL/006 - Dark Gray



LBLL/007 - Jeans Blue



# COLOURFUL CAL

*If you have been looking to get a perfect bracelet in your corner, you cannot go wrong with Colourful Cal. With our signature Steel & Barnett silver cube, high-quality inner elastic and multi-coloured beads that add loads of character to any accessory collection, he is your style squad's team leader – let him show the fashion pack how things are done!*



SBCC/001 - Aqua Terra



SBCC/002 - Matt Moreno



SBCC/003 - Matt Pine



SBCC/004 - Matt Sodalite



SBCC/005 - Spectrolite



SBCC/006 - Tiger

# RILEY

*Stout, sturdy and hardy, this braided leather bracelet bestows steadfast strength and security. Equipped with a branded metal clasp, it furnishes a secure fit comfortably around the wrist.*



LBR/001 - Black



LBR/002 - Caramel



LBR/003 - Dark Green



LBR/004 - Vintage Brown



LBR/005 - Marine



# STAINLESS STEEL DESIGNS

Introducing our distinguished collection of Stainless Steel bracelets for men, where elegance meets durability. Elevate your style with these meticulously crafted pieces that seamlessly blend modern aesthetics with rugged charm. Discover the perfect accessory to make a bold statement while enjoying the lasting sophistication and versatility that Stainless Steel offers.



SSTBSS/001 - Matt Gold



SSTBSS/002 - Matt Silver



SSTBVV/001 - Matt Gold



SSTBVV/002 - Matt Silver



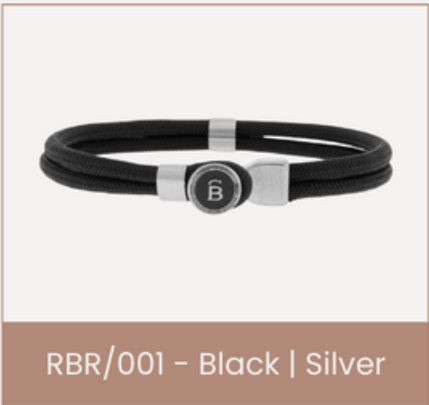
SSTBUE/001 - Matt Gold



SSTBUE/002 - Matt Silver

# RIPTIDE

Inspired by the mesmerizing allure of the sea, this single wrap rope bracelet features a stainless steel clasp adorned with our unmistakable STEEL & BARNETT logo in striking black enamel. Available in brushed gold and brushed silver variants, Riptide is a real statement piece that exudes modernity and casual charm.



RBR/001 - Black | Silver



RBR/002 - Black | Gold



RBR/003 - Brown



RBR/004 - Antraciet



RBR/005 - Woodland



RBR/006 - Navy



RBR/007 - Desert



# TWO TONE

Stylish and with a fashionable sting in its design, this eye-catching newcomer is setting the pace for a fast-paced accessory scene. Stepping away from a traditional round gemstone look, this trendsetter is not afraid to be a bit daring – all while maintaining a certain level of sophistication too!



SBTT/001 - Matt Black



SBTT/002 - Matt Sodalite



SBTT/003 - Matt Spectrolite



SBTT/004 - Matt Wood



SBTT/005 - Tiger

# BONACCI

Gents, rejoice! Expertly handcrafted from premium leather, this double wrap braided bracelet boasts timeless charm. Measuring 12mm x 4mm, it features genuine leather, a matte silver 316L Stainless Steel clasp, and classic refinement.



LBB/001 - Black



LBB/003 - Dark Brown



LBB/004 - Camel



LBB/007 - Caramel



LBB/010 - Jeans Blue



## GRADY

Featuring a thin band of pebbled cowhide leather tailored and trimmed up with stitching, the Grady is a handcrafted bracelet that is comfortable, minimal, simple and stylishly sophisticated. Finished with a brushed silver metal buckle clasp forged from solid stainless steel, the bracelet asserts itself as a token of elegance.



LBG/001 - Black



LBG/002 - Brown



LBG/003 - Iron



LBG/004 - Marine



LBG/005 - Military



LBG/006 - Gold Black



LBG/007 - Gold Brown

## LAKE

Inspired by nautical jewelry rugged enough for the likes of skippers and sailors, this braided double rope bracelet supplies a comfortable fit and surrenders a measure of masculine energy.



RBL/002 - Black Denim



RBL/003 - Rusty



RBL/005 - Navy



RBL/006 - Black



## DENBY

*Inspired by nautical jewelry rugged enough for the likes of skippers and sailors, this braided double rope bracelet supplies a comfortable fit and surrenders a measure of masculine energy.*



LBD/005 - Black



LBD/006 - Brown



LBD/007 - Camel



LBD/011 - Gold Black



LBD/012 - Gold Brown



LBD/013 - Jeans Blue

## ESSENTIALS

*Get back to the basics. Fundamental for every modern gent's jewelry collection, these stretchy stone bead bracelets can be worn as single strands or stacked up as desired.*



SBB/001 - Night Black



SBB/002 - Lava



SBB/003 - Snowflake



SBB/004 - Kabamba



SBB/005 - Serpentine



SBB/007 - Matt Kabamba



SBB/007 - Navy



SBB/008 - Matt Navy

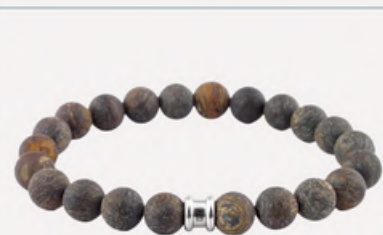


SBB/009 - Chocolate

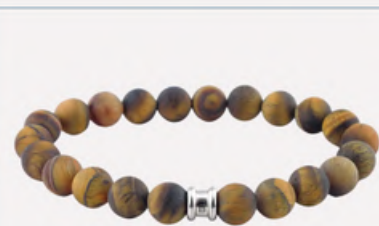




SBB/010 - Bronzite



SBB/011 - Matt Bronzite



SBB/012 - Matt Tiger



SBB/013 - Tiger



SBB/014 - Wood



SBB/016 - Smoky



SBB/017 - Matt Smoky



SBB/020 - Alvaro



SBB/023 - Matt Black



SBB/024 - Matt Rainbow



SBB/025 - Matt Lavikite



SBB/026 - Matt Mud

## PRESTON

*The portliness of this braided leather bracelet for him is a direct representation of masculinity. It's thick, stocky, tough and robust enough to endure daily wear with ease.*



LBP/001 - Matt Green



LBP/002 - Matt Black



LBP/003 - Caramel



LBP/004 - Vintage Brown





## Premium Display

Ideal for countertop and case presentations. Holds 70 pcs with an extra 30 pcs stored in the drawer at the back.



## Starter Display

Ideal for countertop, case, and window presentations. Holds 50 pcs.



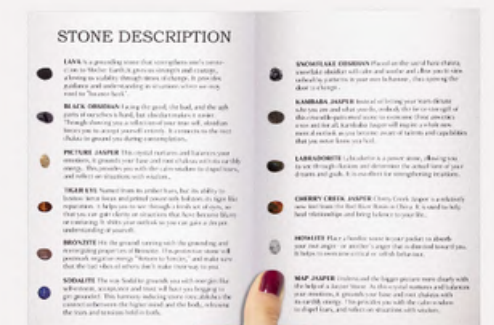
## Dealer Look Book

Discover our latest collection in this curated lookbook, where style meets inspiration.



## Premium Gift Box

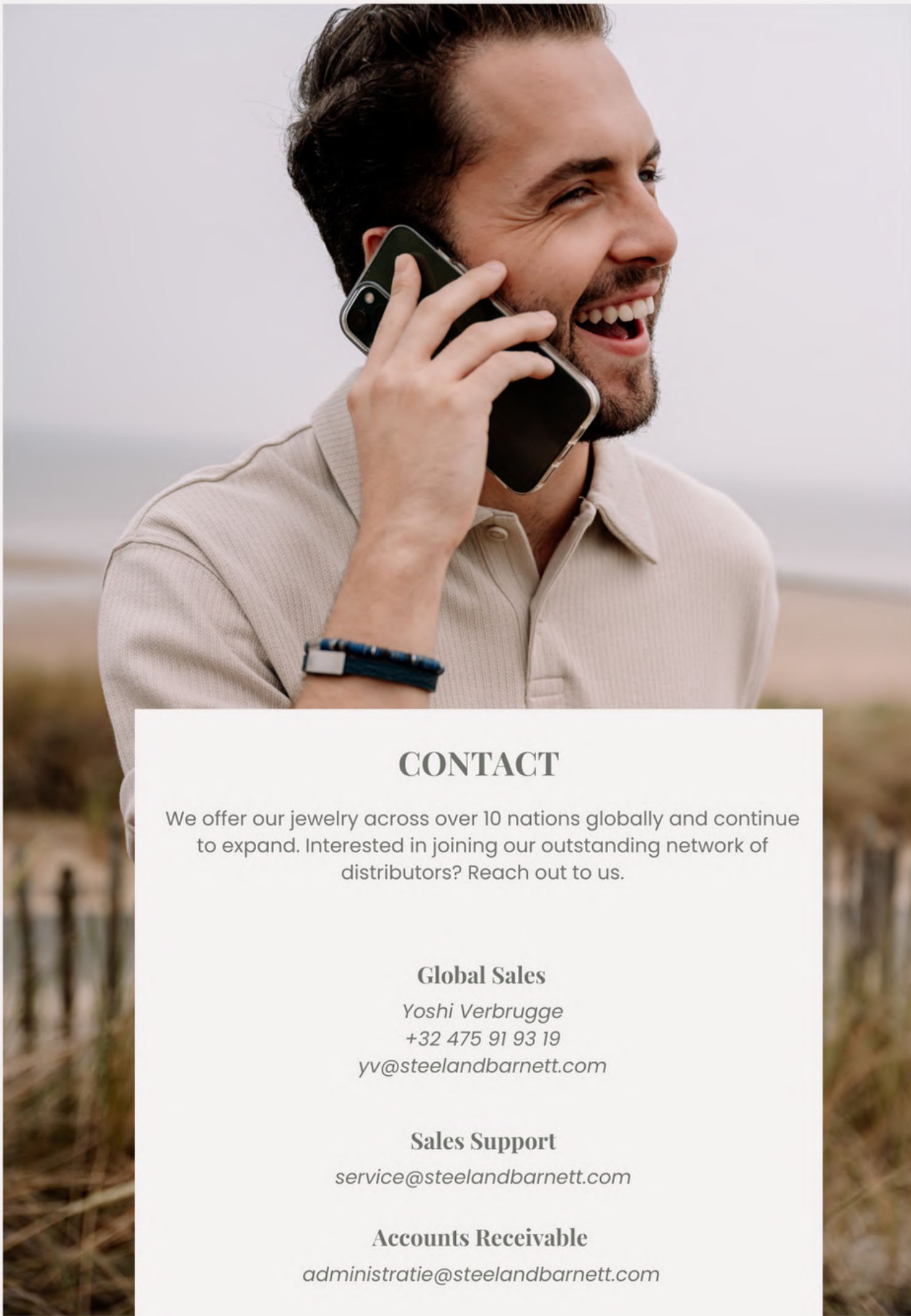
Elevate your gifting with a box that speaks volumes.



## Store Folder

Discover our brand's history, our careful material choices, and the deep symbolism of each stone we use.





## CONTACT

We offer our jewelry across over 10 nations globally and continue to expand. Interested in joining our outstanding network of distributors? Reach out to us.

### Global Sales

Yoshi Verbrugge  
+32 475 91 93 19  
[yv@steelandbarnett.com](mailto:yv@steelandbarnett.com)

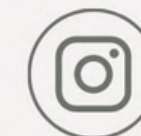
### Sales Support

[service@steelandbarnett.com](mailto:service@steelandbarnett.com)

### Accounts Receivable

[administratie@steelandbarnett.com](mailto:administratie@steelandbarnett.com)

## FOLLOW US ON



[facebook.com/steelandbarnett](https://facebook.com/steelandbarnett)  
[@steelandbarnett](https://instagram.com/steelandbarnett)

## IMPORTANT LINKS

### IMAGE DATABASE

[www.steelandbarnett.com/pages/press](http://www.steelandbarnett.com/pages/press)

### TERMS & CONDITIONS

[www.steelandbarnett.com/pages/terms-conditions](http://www.steelandbarnett.com/pages/terms-conditions)

### B2B SHOWROOM

[www.buyer.uphance.com/steelandbarnett](http://www.buyer.uphance.com/steelandbarnett)

[Sign up and get your login at service@steelandbarnett.com](mailto:service@steelandbarnett.com)





YOUR OWN UNIQUE WRIST STYLE