

# BEVCLEAR® AB FILTER CARTRIDGES

## 99% EFFICIENT MULTI-LAYER POLYPROPYLENE MEDIA FILTERS FOR BEVERAGE FILTRATION

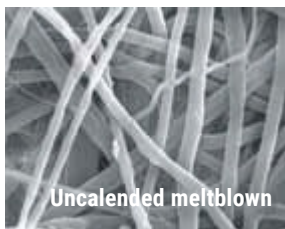
BevClear® AB Filter Cartridges are all-polypropylene pleated depth filters. Characteristics include 99% efficient multilayer media with high particle holding capacity, long service life, and extremely high flow rates. They provide efficient retention of particles in critical applications.

### FEATURE

### BENEFIT

#### Two-layer pleated construction

Provides superior flow rate and extended service life.



#### Nanofiber media

Provides excellent particle retention and filtration performance

#### All-polypropylene construction

100% polypropylene construction provides wide chemical compatibility

### QUALITY STANDARDS

#### Quality Assurance

These products are manufactured in a facility which adheres to ISO 9001:2015 Practices. 100% Integrity tested and Lot traceable.

#### TOC / Conductivity at 25°C

Autoclaved filter effluent meets the USP <643> for Total Organic Carbon and USP <645> for Water Conductivity per WFI requirements after a UPW flush of specified volume.

#### Particle Shedding

Autoclaved filter effluent meets the requirements in USP <788> for large volume injections

#### Non-Fiber Releasing

Component materials meet the criteria for a "Non-fiber-releasing filter" as defined in 21 CFR 210.3 (b) (6)

#### Bacterial Endotoxin

Aqueous extraction of autoclaved filter contains < 0.25 EU/mL as determined by Limulus; Amebocyte Lysate (LAL), USP <85>.

#### USP <87> Cytotoxicity

Meet the requirement of USP <87> In Vitro Cytotoxicity Test

#### USP <88> Biological Toxicity

Meet the criteria of the USP <88> Biological Reactivity Test for Class VI-121°C plastics.

#### Indirect Food Additive

All component materials meet the FDA Indirect Food Additive requirements cited in 21 CFR 177-182, and EU framework regulation [1935/2004/EC].



### Typical Applications

- Clarification
- Particle and Bioburden Reduction
- Pasteurized Filtration
- Wine
- Water
- Beer

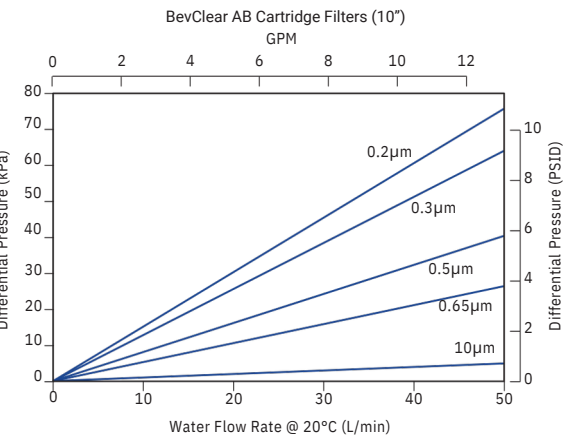
## SPECIFICATIONS

<b>Filter media</b>	Multi-Layer Meltblown Polypropylene (Super Fine Nanofiber)
<b>Support</b>	Polypropylene
<b>Cage/Core/End Caps</b>	Polypropylene
<b>O-ring internal support</b>	PBT, Stainless Steel
<b>O-rings</b>	Silicone, EPDM, FKM
<b>Effective filtration area</b>	0.53m <sup>2</sup> (5.7 ft <sup>2</sup> )/ Ø71-10 inch
<b>Cartridge diameter</b>	71 mm (2.8 in.)
<b>Max. Operating temperature</b>	80°C
<b>Max. Differential pressure</b>	Forward: 0.50 MPa (5.0 bar, 73 psi) at 21°C; 0.20 MPa (2.0 bar, 29 psi) at 80°C Reverse: 0.20 MPa (2.0 bar, 29 psi) at 21°C
<b>Steam sterilization (saturated steam)</b>	Up to 20 cycles for 30 minutes at 121°C at Max. Differential Pressure of 0.5 bar (7.25 psi)
<b>Hot water sterilization</b>	85°C/30 min. at Max. Differential Pressure for 2 bar (29 psi)
<b>Cleaning solution</b>	2% NaOH Solution @ ≤65°C

## RETENTION

Specification	Retention Rate (%)							
	1.0 µm	3.0 µm	4.0 µm	5.0 µm	6.0 µm	7.0 µm	10 µm	20 µm
<b>BCAB0020</b>	≥ 99.99	≥ 99.99	≥ 99.99	≥ 99.99	≥ 99.99	≥ 99.99	≥ 99.99	≥ 99.99
<b>BCAB0030</b>	≥ 99.98	≥ 99.99	≥ 99.99	≥ 99.99	≥ 99.99	≥ 99.99	≥ 99.99	≥ 99.99
<b>BCAB0050</b>	≥ 99.90	≥ 99.98	≥ 99.99	≥ 99.99	≥ 99.99	≥ 99.99	≥ 99.99	≥ 99.99
<b>BCAB0065</b>	≥ 99.50	≥ 99.90	≥ 99.98	≥ 99.99	≥ 99.99	≥ 99.99	≥ 99.99	≥ 99.99
<b>BCAB0080</b>	≥ 99.20	≥ 99.50	≥ 99.90	≥ 99.98	≥ 99.99	≥ 99.99	≥ 99.99	≥ 99.99
<b>BCAB0100</b>	≥ 99.00	≥ 99.20	≥ 99.50	≥ 99.90	≥ 99.98	≥ 99.99	≥ 99.99	≥ 99.99
<b>BCAB0300</b>	-	≥ 99.00	≥ 99.20	≥ 99.50	≥ 99.90	≥ 99.98	≥ 99.99	≥ 99.99
<b>BCAB0400</b>	-	-	≥ 99.00	≥ 99.20	≥ 99.50	≥ 99.90	≥ 99.98	≥ 99.99
<b>BCAB0500</b>	-	-	-	≥ 99.00	≥ 99.20	≥ 99.50	≥ 99.90	≥ 99.98
<b>BCAB0600</b>	-	-	-	-	≥ 99.00	≥ 99.20	≥ 99.50	≥ 99.90
<b>BCAB0700</b>	-	-	-	-	-	≥ 99.00	≥ 99.20	≥ 99.50
<b>BCAB1000</b>	-	-	-	-	-	-	≥ 99.00	≥ 99.20
<b>BCAB2000</b>	-	-	-	-	-	-	-	≥ 99.00

FLOW RATES



ORDERING INFORMATION

EXAMPLE: **BCAB0050DOE10E-F** 0.5 µm, DOE, 10" filter with EPDM gaskets

**BCAB**



**Removal Rating**

- 0020 = 0.2 µm
- 0030 = 0.3 µm
- 0050 = 0.5 µm
- 0065 = 0.65 µm
- 0080 = 0.8 µm
- 0100 = 1.0 µm
- 0300 = 3.0 µm
- 0400 = 4.0 µm
- 0500 = 5.0 µm
- 0600 = 6.0 µm
- 0700 = 7.0 µm
- 0800 = 8.0 µm
- 1000 = 10 µm
- 2000 = 20 µm



**Connection**

- DOE = Double Open End, flat gasket
- HTC = 222 O-ring/Flat (PBT Insert)
- HTF = 222 O-ring/Fin (PBT Insert)
- HSF = 226 O-ring/Fin (PBT Insert)
- SSF = 226 O-ring/Fin (SS Insert)
- SSC = 226 O-ring/Flat (SS Insert)
- STF = 222 O-ring/Fin (SS Insert, 3 Tabs)



**Nominal Length**

- 05 = 5"
- 10 = 10"
- 20 = 20"
- 30 = 30"
- 40 = 40"



**-F**

**Seal Material**

- S = Silicone
- E = EPDM
- V = FKM



Website: [www.copure.com.au](http://www.copure.com.au)  
Email: [sales@copure.com.au](mailto:sales@copure.com.au)  
Phone: 02 9139 2850