



Galileo

Galileo, for a respectful and
sustainable vinification...



Galileo



WHAT MAKES US DIFFERENT

A spherical shape, naturally perfect:

It keeps the natural convection motion and guarantees better thermal inertia.

Lightweight concrete, 100% mineral:

Galileo tanks are twice as light insulated as regular concrete tanks.
You can install and move them easily!

Energy saving:

Thanks to its shape, composition, unique thermal control system and manual rotation, Galileo tanks reduce your energy consumption during vinification.

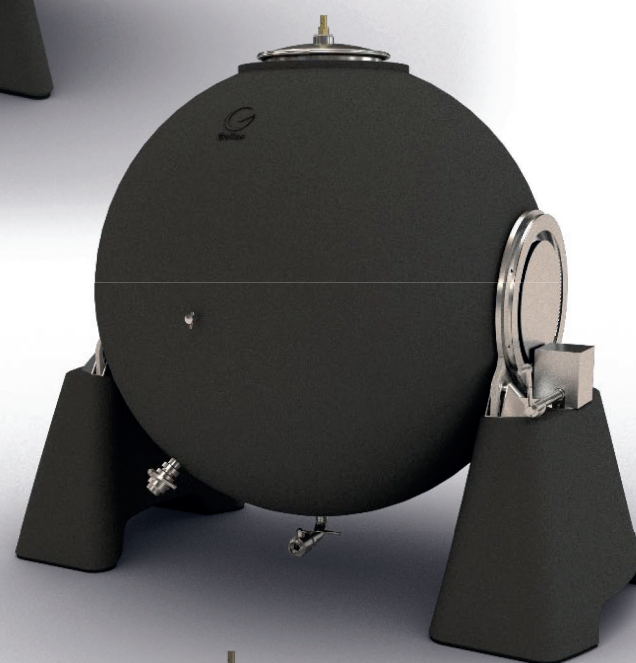
3 capacities available: 8hl, 15hl and 30hl.

Static or rotating models:

The 360° rotation offers you new opportunities to control maceration.
You can preserve the grapes identity and stir the lees easily. Cleaning is simple and quick.

Thermal regulation integrated in concrete:

It enables an effective, progressive, and homogeneous temperature control all over the surface of the sphere.



100% MADE IN FRANCE

Galileo promotes local networks and only works with local partners located in a radius of 200km around its workshop in Cognac.

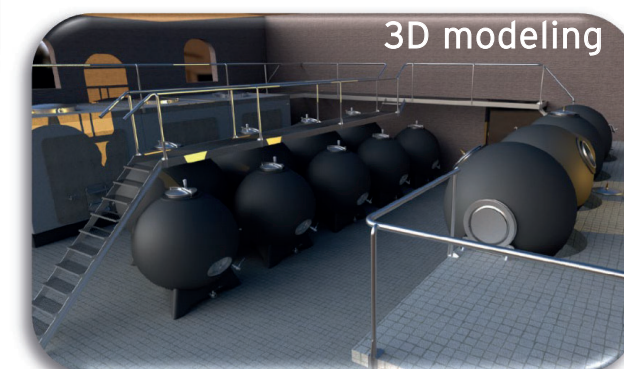
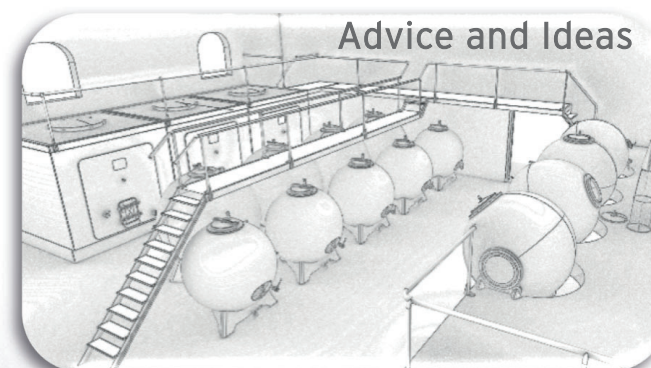
PATENTED TANKS

« Concrete spherical tank for wine storage and aging »
« Better tank's temperature control system »



PERSONALIZED SUPPORT

Our team guides you from the conception to the end of your project by collaborating with your architects and contracting authority.



THEY TRUST US



A LIGHTWEIGHT CONCRETE SPHERICAL TANK - 100% MINERAL - ENERGY SAVING



EQUIPMENT INCLUDED IN PRICE

| MODELS | STATIC | | | | | ROTATING | |
|---|--------|-----|------------------|-----|------------------|------------------|-----------------|
| | G8 | G15 | G15 _T | G30 | G30 _T | G15 _R | G8 _R |
| Network of coils set into the concrete mass to control the temperature + 300mm stainless steel Scabbard for temperature probe | | | | | | | |
| 1 round upper hatch (diameter 400mm) | | | | | | | |
| 1 pressure/vacuum safety valve | | | | | | | |
| 1 oval front access door (440mm x 308mm) | | | | | | | |
| 1 racking valve (ø 40) | | | | | | | |
| 1 outlet valve (ø 40) | | | | | | | |
| 1 tasting tap | | | | | | | |
| 1 concrete base integrated | | | | | | | |
| 1 stainless steel support | | | | | | | |



TECHNICAL SPECIFICATIONS



| MODELS | STATIC | | | ROTATING | |
|----------------------|--------|-------|-------|---|-----------------|
| | G8 | G15 | G30 | G15 _R | G8 _R |
| Capacity (L) | 800 | 1 500 | 3 000 | 1 500 | 800 |
| Total height (mm) | 1 670 | 1 930 | 2 340 | 1 900 | 1 735 |
| External length (mm) | 1 300 | 1 580 | 1 970 | 2 250 | 1 730 |
| External width (mm) | 1 300 | 1 580 | 1 970 | 1 660 | 1 320 |
| Width (mm) | 70 | 80 | 90 | 80 | 70 |
| Empty weight (kg) | 785 | 1 300 | 2 200 | 1 900 (2 000 while transportation with metallic parts) | 695 |

Standard Colors



Light grey Terracotta Anthracite grey

Certified paints



This brochure is printed on 100% recycled paper