

# Catalogue B - Cotton, Work & Special Purpose

Please see Catalogue A for Wool & Alpaca Socks



**HumphreyLaw®**  
the sock specialist



22 Armstrong Rd  
Heathmont VIC 3135  
[www.humphreylaw.com.au](http://www.humphreylaw.com.au)  
[info@humphreylaw.com.au](mailto:info@humphreylaw.com.au)  
+61 (03) 9729 5222



## SIZE INFORMATION

### Leg Length Codes

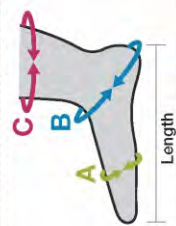
The third character of the style code designates the leg length.

A/B	3cm or 6.5cm cuff
C	Sockettes 25cm(10")
F	Fifteen inch half hose 38cm (15")
H	Half hose 45cm(18")
W	Walk socks with turnover top 45-48cm (18 – 19")

### Foot Lengths and approximate shoe sizes

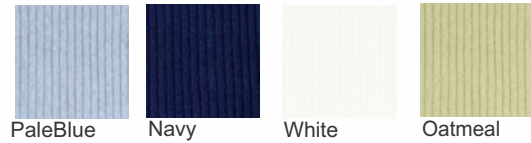
The last two characters of the style code designate the foot length. Foot length measurements are from back of heel to tip of toe.

Code	Name	Foot Length cm	Shoe Size
05	Small	22 – 26	Ladies 3 - 8, Men's 4½ - 7, Euro 35 - 41
07 or L7	Medium	25 – 29	Ladies 8 – 11, Men's 7 - 10 Euro 40 - 45
10	Large	30 – 35	Men's 10 – 13, Euro 46 - 51
13	X Large	36 – 39	Men's 13 - 16

Extra Wide Sock foot sizes	Australian/UK shoe size	European shoe size	Foot length	Circumference around foot (A)	Circumference across Heel (B)	Circumference of Lower Leg (C)	
<b>Wool Blend – Small</b> 50% wool, 50% nylon (Style 67X05)	Ladies 3–8, Men's 4.5–7	35–41	22–26cm	18–46cm	23–48cm	16–50cm	
<b>Wool Blend – Medium</b> 50% wool, 50% nylon (Style 67X07)	Ladies' 8–11 Men's 7–10	40–45	25–29cm	18–46cm	23–48cm	16–50cm	
<b>Wool Blend – Large</b> 50% wool, 50% nylon (Style 67X10)	10–13	46–51	30–35cm	18–46cm	23–48cm	16–50cm	
<b>Cotton Blend – XL</b> 85% mercerised cotton (Style 57X14)	13–16	50–55	36–39cm	18–46cm	23–48cm	16–50cm	
<b>Wool Blend – XL</b> 50% wool, 50% nylon (Style 67X14)	13–16	50–55	36–39cm	18–46cm	23–48cm	16–50cm	
<b>Wool Blend – XXL</b> 50% wool, 50% nylon (Style 67X16)	14+	55+	38–45cm	18–46cm	23–48cm	16–50cm	

### Current colours and stock items

For the current colours and styles please check the latest order form. The order form print date is in the name and address panel. Styles on this catalogue are listed in the same order as on the order form.



## Cotton/Nylon Business Weight Walk Sock Style 35W

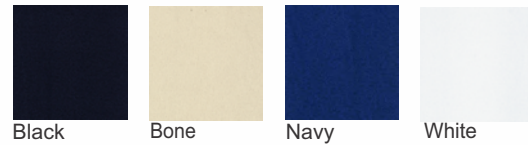
Style Code: 35W

A comfortable hardwearing lightweight Nylon/Cotton blend sock for wearing with shorts. Generous leg length for fit and comfort with a turn-over top just below the knee. Leg length of 45cm.

Colours: Pale Blue, Navy, White, Oatmeal

Contents: 55% Nylon 45% Cotton.

Size: Medium and Large



## 95% Mercerised Cotton Health Sock® Style 50C

Style Code: 50C

A ladies' medium weight hardwearing mercerised cotton sock providing maximum comfort in hot conditions. A Health Sock® with no tight elastic top.

Contents: 95% Mercerised Cotton, 3% Nylon, 2% Elastane.

Colours: Black, Bone, Navy, White

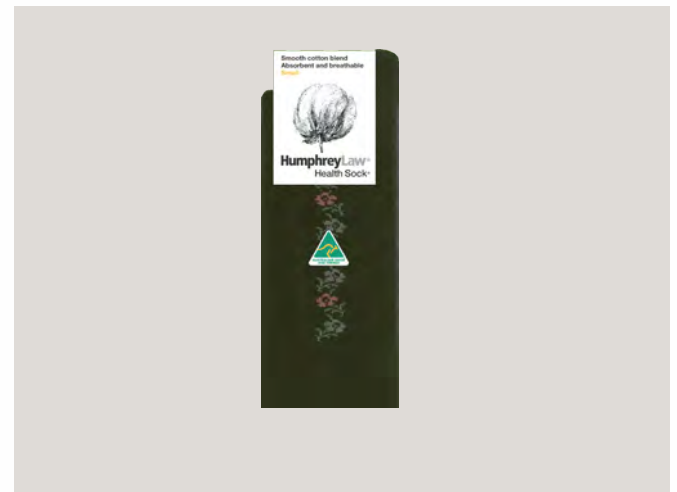
Size: Small and Medium



NavyBlue



BlackPink



## 85% Mercerised Cotton Pansy Lace Pattern Health Sock® Style 51C

Style Code: 51C

Pattern: Pansy Lace

A high quality comfortable ladies' sock with an elegant pattern. Made with mercerised cotton which is more comfortable than common soft cotton and also has higher strength, abrasion resistance and moisture absorbency. The tapered knit leg combined with fine elastane throughout gives an elegant smooth fit. Light to medium weight for year round wear. A Health Sock ® with no tight elastic top. (The plain version of this sock is Style 57C)

Colours: Navy/Blue, Black/Pink

Contents: 85% Mercerised Cotton, 13% Nylon, 2% Elastane.

Size: Small and Medium



## 85% Mercerised Cotton Butterfly Pattern Health Sock® Style 51C

Style Code: 51C  
Pattern: Butterfly

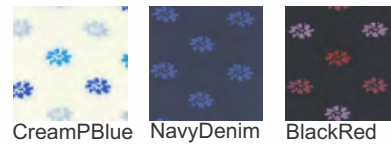
A high quality comfortable ladies' sock with an elegant pattern. Made with mercerised cotton which is more comfortable than common soft cotton and also has higher strength, abrasion resistance and moisture absorbency. The tapered knit leg combined with fine elastane throughout gives an elegant smooth fit. Light to medium weight for year round wear. A Health Sock ® with no tight elastic top. (The plain version of this sock is Style 57C)

Colours: Navy, Black

Contents: 85% Mercerised Cotton, 13% Nylon, 2% Elastane.

Size: Small and Medium





Cream/Pale Blue

Navy

Black/Red



## 85% Mercerised Cotton Daisy Pattern Health Sock® Style 51C

Style Code: 51C

Pattern: Daisy

A high quality comfortable ladies' sock with an elegant pattern. Made with mercerised cotton which is more comfortable than common soft cotton and also has higher strength, abrasion resistance and moisture absorbency. The tapered knit leg combined with fine elastane throughout gives an elegant smooth fit. Light to medium weight for year round wear. A Health Sock ® with no tight elastic top. (The plain version of this sock is Style 57C)

Colours: Cream/Pale Blue, Navy. Black/Red

Contents: 85% Mercerised Cotton, 13% Nylon, 2% Elastane.

Size: Small



Antelope



Navy



Black



## 85% Mercerised Cotton Net Diamond Pattern Health Sock® Style 51C

Style Code: 51C

Pattern: Net Diamond

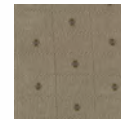
A high quality comfortable sock with an elegant pattern. Made with mercerised cotton which is more comfortable than common soft cotton and also has higher strength, abrasion resistance and moisture absorbency. The tapered knit leg combined with fine elastane throughout gives an elegant smooth fit. Light to medium weight for year round wear. A Health Sock® with no tight elastic top. (The plain version of this sock is Style 57C)

Colours: Antelope, Navy, Black

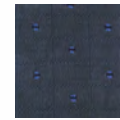
Contents: 85% Mercerised Cotton, 13% Nylon, 2% Elastane.

Size: Medium and Large

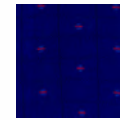




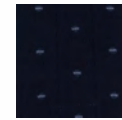
Antelope



DkGrey



Navy



DarkGrey



## 85% Mercerised Cotton Checkspot Pattern Health Sock® Style 51C

Style Code: 51C

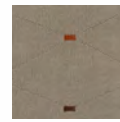
Pattern: Checkspot

A high quality comfortable sock with an elegant pattern. Made with mercerised cotton which is more comfortable than common soft cotton and also has higher strength, abrasion resistance and moisture absorbency. The tapered knit leg combined with fine elastane throughout gives an elegant smooth fit. Light to medium weight for year round wear. A Health Sock® with no tight elastic top. (The plain version of this sock is Style 57C)

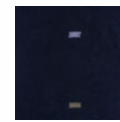
Colours: Antelope, Dark Grey, Navy, Black

Contents: 85% Mercerised Cotton, 13% Nylon, 2% Elastane.

Size: Medium and Large



Antelope



Black



## 85% Mercerised Cotton 3 Squares Pattern Health Sock® Style 51C

Style Code: 51C

Pattern: 3 Squares

A high quality comfortable sock with an elegant pattern. Made with mercerised cotton which is more comfortable than common soft cotton and also has higher strength, abrasion resistance and moisture absorbency. The tapered knit leg combined with fine elastane throughout gives an elegant smooth fit. Light to medium weight for year round wear. A Health Sock® with no tight elastic top. (The plain version of this sock is Style 57C)

Colours: Antelope,Black

Contents: 85% Mercerised Cotton, 13% Nylon, 2% Elastane.

Size: Medium and Large



## 85% Mercerised Cotton Multi Diamond Pattern Health Sock® Style 51C

Style Code: 51C

Pattern: Multi Diamond

A high quality comfortable sock with an elegant pattern. Made with mercerised cotton which is more comfortable than common soft cotton and also has higher strength, abrasion resistance and moisture absorbency. The tapered knit leg combined with fine elastane throughout gives an elegant smooth fit. Light to medium weight for year round wear. A Health Sock® with no tight elastic top. (The plain version of this sock is Style 57C)

Colours: Black, Olive Grey, True Blue

Contents: 85% Mercerised Cotton, 13% Nylon, 2% Elastane.

Size: Medium and Large





## 85% Cotton Striped Health Sock® Style 52C

Style Code: 52C

A high quality comfortable ladies' sock with an elegant tone on tone stripe. The tapered knit leg combined with fine elastane throughout gives an elegant smooth fit. Light to medium weight for year round wear. A Health Sock® with no tight elastic top.

Colours: Black, Bone, Jade, Navy, Lt Grey, White, Imperial Blue, Fuchsia, Purple, Tomato

Contents: 85% Cotton, 13% Nylon, 2% Elastane.

Size: Small and Medium



Black

White



## 80% Mercerised Cotton Sock Style 53B

Style Code: 53B

A mercerised cotton blend sock with a short elasticised cuff with a subtle self pattern. A unique sock for sport or casual wear.

Colours: Black, White

Contents: 80% Mercerised Cotton, 18% Nylon, 2% Elastane.

Size: Small and Medium



Bone



## 89% Cotton Cushion Sole Walk Sock Style 54W

Style Code: 54W

A thick cotton walk sock with a cotton cushion sole. A generous leg length of 45cm and a roll-over top give the sock a fashionable look. Ideal for uniform wear in warmer climates when shorts are worn.

Colour: Bone

Contents: 89% Cotton, 10.3% Nylon, 0.7% Lycra.

Size: Small, Medium and Large





Black



White



## 95% Cotton Cushion Sole Health Sock® Style 55C

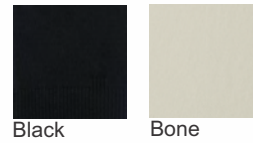
Style Code: 55C

This Men's sock has a heavy knit cotton cushion sole which is very absorbent and ideal for sensitive feet. While this cushion sole makes for year-round comfort this sock is very good in sneakers in the summer. A Health Sock® with no tight elastic top.

Colours: Black, White

Contents: 95% Cotton, 4% Nylon, 1% Elastane.

Size: Medium and Large



## Cotton Blend Invisible Sock with Silicone Free Heel Grip Style 56IN

Style Code: 56IN

An 'invisible' sock is made for those occasions when you don't want to be seen actually wearing a sock. These socks are made with 60% cotton and have a non-allergic elastic heel grip to help keep them in place. They also have extra reinforcing at wear points to give longer wear.

Colours: Black, Bone

Contents: 60% Cotton, 29% Nylon, 11% Elastane.

Size: Small, Medium and Large



Black

White



## 80% Mercerised Cotton Ankle Sock Style 57A

Style Code: 57A

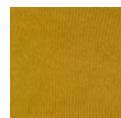
A high quality comfortable lightweight ankle sock with a mini cuff, suitable for year round wear. Made with absorbent and breathable mercerised cotton. Contains elastane to ensure a smooth fit.

Colours: Black, White

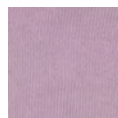
Contents: 80% Mercerised Cotton, 18% Nylon, 2% Elastane.

Size: Small, Medium and Large

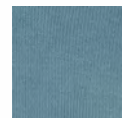




EmprYellow



PstlLavender



ForgetMeNot



## 85% Mercerised Cotton Short Leg Health Sock Style 57B

Style Code: 57B

This fine, smooth fitting ladies' fashion sock is made with mercerised cotton. It can be worn with ankle boots as it has a 15cm leg - longer than an ankle sock and shorter than a standard ladies sock. Absorbent and breathable mercerised cotton combined with fine elastane throughout gives an elegant smooth fit. This is a mid-weight sock which will fit in any boots. Extra nylon reinforcing gives longer wear. A Health Sock® with no tight elastic top.

Colours: Empire Yellow, Pastel Lavender, Forget Me Not

Contents: 85% Mercerised Cotton, 13% Nylon, 2% Elastane.

Size: Small and Medium



## 85% Mercerised Cotton Health Sock® Style 57C

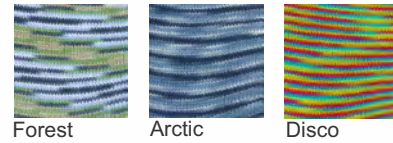
Style Code: 57C

A high quality comfortable plain knit business sock with no-elastic top. Absorbent and breathable mercerised cotton combined with fine elastane throughout gives an elegant smooth fit. Light to medium weight for year-round wear. A Health Sock® with no tight elastic top. (The patterned version of this sock is Style 51C.)

Colours: Black, Navy, Antelope, Dark Grey, White

Contents: 85% Mercerised Cotton, 13% Nylon, 2% Elastane.

Size: Small (Folded Top), Medium(Ribbed Top) and Large(Ribbed Top)



Forest

Arctic

Disco



## Sun Sock Style 58A

Style Code: 58A

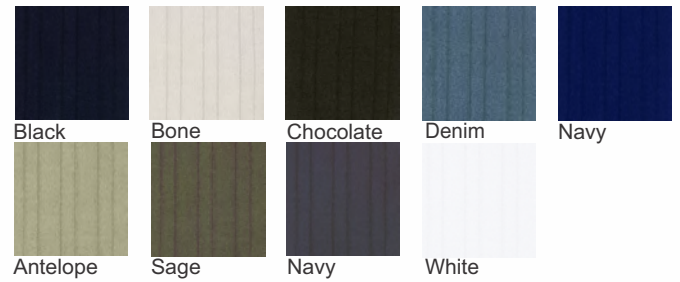
We have just released our Sun Sock following the installation of 357 solar panels on our factory roof. These panels generate half of our electricity requirements so every second sock is knitted using solar power!

The Sun Sock is a comfortable ankle sock with a mini cuff made with breathable and absorbent space dyed mercerised cotton yarn, and because the colours are distributed randomly on the yarn itself, every Sun Sock is unique. So each sock in a pair of Sun Socks is not exactly the same as the other!

Colours: Forest, Arctic, Disco

Contents: 78.5% Mercerised Cotton, 17% Nylon, 4.5% Elastane.





## 95% Mercerised Cotton Health Sock® Style 59C

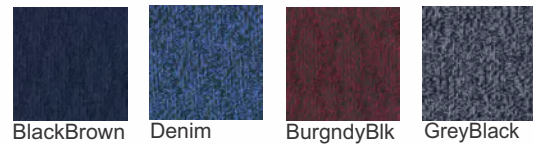
Style Code: 59C

A medium weight hardwearing mercerised cotton sock for maximum comfort in hot conditions. The sock has elegant ribs, which facilitate air circulation around the feet to keep them cool and comfortable. An excellent business sock with a relatively thick yet open cotton knit. A Health Sock® with no tight elastic top.

Colours: Black, Bone, Chocolate, Denim, Navy, Antelope, Sage, Dark Grey, White

Contents: 95% Mercerised Cotton, 3% Nylon, 2% Elastane.

Size: Medium and Large



## Sustainable Wool/Bamboo-Rayon Sock Style 93C

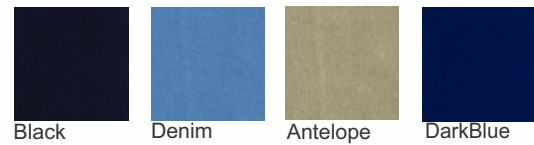
Style Code: 93C

Both wool and bamboo-rayon are renewable fibres, wool comes straight off the sheep's back, bamboo cane is chemically treated to produce a bamboo-rayon yarn. (Bamboo-rayon is the technically correct description of the yarn used in all bamboo clothing products.) The combination of bamboo-rayon and wool is ideal for socks. The wool provides warmth, insulation and resilience, and the bamboo rayon provides strength, moisture absorbency and abrasion resistance. Suitable for year-round wear.

Colours: Black Brown, Denim, Burgundy/Black, Grey/ Black

Contents: 49% Wool, 47% Bamboo-Rayon, 3.5% Nylon, 0.5% Lycra.

Size: Small, Medium and Large



## Sustainable Bamboo-Rayon Sock Style 94C

Style Code: 94C

Bamboo-rayon is a renewable fibre. Bamboo, is a very fast growing grass with little or no need for pesticides, the bamboo is crushed and then chemically processed to make Bamboo-Rayon. Bamboo-Rayon has good abrasion resistance so socks should last longer than natural fibres. Suitable for year round wear in warmer climates and summer wear in cooler climates.

Colours: Black, Denim, Antelope, Dark Blue

Contents: 67% Bamboo-Rayon, 31% Nylon, 2% Lycra.

Size: Small, Medium and Large



## Super Soft Thermal Bed Sock Style 28B

Style Code: 28B

This bed sock is made with super-soft CoolMax® loops inside to keep sensitive skin dry and warm. Long fibre fleece Wool is knitted on the outside of the sock for maximum warmth. The loose design does not restrict circulation and the sock slips on easily because it has no heel. For indoor use only. Helpful for people who have thin, easily damaged skin, cold feet caused by bad circulation, or swollen feet.

Colours: Pink/White (Small), Silver/White (Medium), Blue/White (Large)

Contents: 50% CoolMax®, 38% Wool, 7% Nylon, 4.5% Polyester, 0.5% Elastane.

Size: Small, Medium and Large





Red



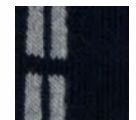
MidGrey



ImpBlue



Fuchsia



JuniorNavy



## Children's Health Sock® Style 91C

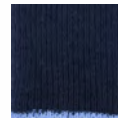
Style Code: 91C

This sock is made with fine merino wool that will not prickle or itch and has the Health Sock® 'no tight elastic' top, meaning that the sock stays up without restricting the wearer's blood circulation, and does not leave the deep indentation on the child's leg typical of cheap cotton children's socks. The sock also has CoolMax® padded soles and heels for comfort and durability, and nylon reinforced heel and toe.

Colours: Red, Mid Grey, Imperial Blue, Fuchsia, Junior Navy

Contents: 62% Fine Merino Wool, 27% Nylon, 8% CoolMax®, 2% Lycra, 1% Polyester.

Size: Small, Medium and Large



DkGrey



## Wool Gumboot Sock with Long Leg Style 13H

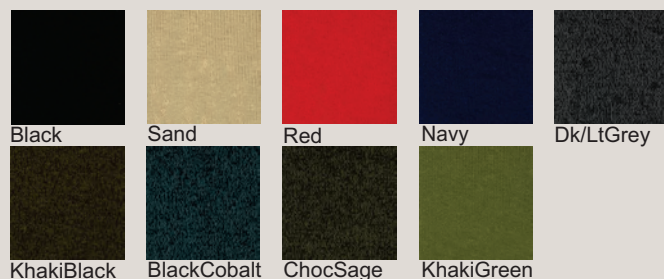
Style Code: 13H

Specifically designed for wearing with gumboots, this is a lightweight, mid-calf length, wool sock with generous nylon reinforcement to provide longer wear. This sock has an elastic top to stop it slipping into the gumboot and will protect the lower leg in most gumboot designs without feeling bulky. It will not shrink or stretch out of shape. (Of course you can wear this very comfy sock with any sort of footwear!)

Colour: Dark Grey

Contents: 63% Wool, 34% Nylon, 2.5% Polyester, 0.5% Lycra.

Size: Medium and Large



## Stockman Health Sock® Style 20C

Style Code: 20C

A hardwearing thick wool sock, an excellent all-purpose sock for work or recreation. This sock has a resilient pure wool terry-knitted cushion sole inside as wool is the best fibre for padding as it will not lie down and die like synthetic fibres do. This is a good all-purpose sock for work or recreation. A Health Sock® with no tight elastic top. Note also that the multi-coloured socks have a slightly longer leg than the plain coloured socks.

Colours: Black, Sand, Red, Navy, Dk Grey/Lt Grey, Khaki/Black, Black/Cobalt, Chocolate/Sage, Khaki Green

Contents: 77% Wool, 23% Nylon (Plain colours)

77% Wool, 12% Nylon, 11% Polyester (Multi-coloured)

Size: Small, Medium and Large

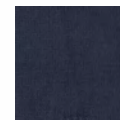




Black



Navy



DkGrey



KhakiGreen



## The Grass Seed Sock Style 22C

Style Code: 22C

A unique cotton blend sock knitted with a thick slippery cotton yarn that allows grass seeds or sawdust to slip off. Absorbent and hardwearing - excellent in boots and gum boots. Made from hard wearing, unshrinkable, absorbent mercerised cotton which helps to discharge static electricity. Extra reinforcing in heel and toe with a true rib top for sideways stretch.

Colours: Black, Navy, dark Grey, Khaki Green

Contents: 80% Mercerised Cotton, 20% Nylon.

Size: Small, Medium and Large

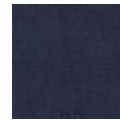




Black



Navy



DkGrey



KhakiGreen



## The Grass Seed Half-Hose Sock Style 22H

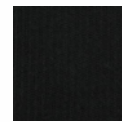
Style Code: 22H

A unique cotton blend sock knitted with a thick slippery cotton yarn that allows grass seeds or sawdust to slip off. Absorbent and hardwearing - excellent in boots and gum boots. Made from hard wearing, unshrinkable, absorbent mercerised cotton which helps to discharge static electricity. Extra reinforcing in heel and toe with a true rib top for sideways stretch. The over-the-calf leg length of 45cm means the sock comes to just below the knee, providing greater warmth and protection.

Colours: Black, Navy, dark Grey, Khaki Green

Contents: 80% Mercerised Cotton, 20% Nylon.

Size: Medium and Large



Black



Navy



Khaki



BlackYellow



## Feet First Sock Style 32C

Style Code: 32C

A tough sock especially designed for wearing with steel capped boots. It has thick wool padding under the sole, high on the heel, and importantly above the toe to provide additional protection from the steel cap. The thick padding on the sole also insulates the foot from hot and cold surfaces. Heels and toes are nylon reinforced for longer wear. The lighter weight leg and arch provide coolness and elastic knitted into the arch and ankle prevent the sock slipping into the boot.

Colours: Black, Navy, Khakhi, Blak/ Yellow

Contents: 78% Wool, 20.5% Nylon, 1.5% Lycra.

Size: Medium and Large



Black



KhakiBrown



DarkBlue



## Genuine Army Sock Style 66F

Style Code: 66F

100% Pure wool inside for comfort and insulation in hot or cold conditions. Nylon outside for abrasion resistance. Sock can be folded over top of boot for comfort and moisture removal. Best comfort and performance combination established through extensive textile testing.

Colours: Black, Khaki Brown, Dark Blue

Contents: 77% Wool, 22% Nylon, 1% Lycra.

Size: Small, Medium, Large and X Large





Black



Denim



ScotsGrey



## Thermal Sock Style XHF

Style Code: XHF

A very thick wool blend sock lined with terry throughout. The long terry loops inside the sock trap air next to the foot making an insulating layer, which keeps warm air in and cold air out. The density of these terry stitches is what makes the Thermal Sock so effective. Reinforced heels and toes for extra strength and durability. Ideal for working in cool rooms or cold conditions but also a great thick sock for outdoor activities like hiking, camping and 4WD outings.

Colours: Black, Denim, Scots Grey

Contents: 70% Wool, 30% Nylon.

Size: Small, Medium and Large





## Mining Boot Sock Style 66S

Style Code: 66S

This sock is designed for use with boots in the rigorous conditions of mines or smelters. Its pure wool terry-knit inner layer provides added blister protection, and aids moisture removal, without increasing foot temperature.

The lower leg of the sock is knitted tighter to follow the shape of a normal leg and ankle, decreasing the possibility of its slipping into the boot without having to use elastane which would decrease moist air flow up the leg. A nylon outer layer provides durability, and protects the wool inner layer.

This sock has a 1 x 1 rib top with elastane in the welt only. This construction allows greater sideways stretch and is technically a better construction than an in turned welt top. The sock can be folded over the top of the boot for comfort and moisture removal.

Colour: Dark Blue

Contents: 77.5% Wool, 22% Nylon, 0.5% Lycra.

Size: Small, Medium and Large



## Cycling Sock Style 27B

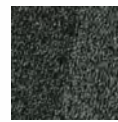
Style Code: 27B

Most cycling socks are made of cotton, but this snug-fitting sock is made of fine merino wool which is a better insulator. The use of high quality wool outside combined with CoolMax® inside produces a sock that keeps the foot comfortable and less sweaty. The CoolMax® wicks perspiration away from the skin foot and Nylon in the heel and toe provide additional reinforcement. A perfect sock for spring, autumn and winter cycling.

Colours: Red, Fluro Yellow, Dark Grey

Contents: 54% Fine Merino Wool, 25% CoolMax®, 19% Nylon, 2% Lycra.

Size: Small, Medium and Large



BlackWhite



## Wool/Coolmax Cushion Sole Sport Sock Style 33A/B

Style Code: 33A/B

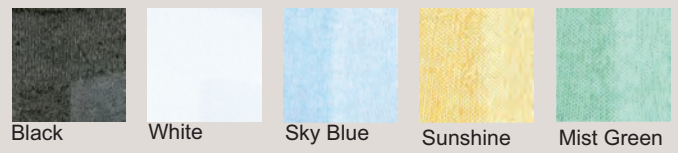
The special construction of this sock with wool inside and CoolMax® outside is designed to carry perspiration away from the skin. The wool cushion sole will keep its resilience for many wears in high impact sports.

Colour: Black/White

Contents: 76% Australian Wool, 19% Coolmax, 4% Nylon and 1% Elastane.

Size: Small, Medium and Large





## 67% Wool Terry Cushion Sole Sport Sock Style 36A

Style Code: 36A

A great sport sock with fine merino wool inside and mercerised cotton on the outside. The micro terry fine wool cushion sole provides extra bounce but is fine enough to fit in any sports shoes. The cotton on the outside absorbs sweat keeping feet comfortable. Please note that the white sock has a CoolMax® cuff which will wick away perspiration and the 2% CoolMax® content reduces its wool content to 65%.

Colours: Black, White, Sky Blue, Sunshine, Mist Green

Contents: 67% Wool, 19% Mercerised Cotton, 12% Nylon, 2% Elastane.

Size: Small, Medium and Large





WhiteBlue



## Wool/CoolMax Sports Sock Style 37A

Style Code: 37A

This great sports sock is knitted with a combination of wool and CoolMax®, the latter being a wicking fibre which draws perspiration away from the foot. There is a little elastic in the cuff but as this is an ankle sock with a pull-up tab, the cuff sits around the ankle bone. With a wool cushion sole, this sock is comfy for most sporting activities.

Colour: Blue/White

Contents: 39% CoolMax®, 30% wool, 28% Nylon, 2.5% Polyester, 0.5% Elastane.

Size: Small, Medium and Large



White



## Wool/Cotton Cushion Sole Sport Sock Style 47A/B

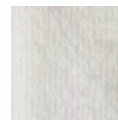
Style Code: 47A/B

The pure wool cushion sole in this sport sock will keep its resilience for many wears in high impact sports. Specially constructed with wool inside and absorbent mercerised cotton outside, the sock also has a CoolMax® leg designed to carry perspiration away from the skin.

Colour: White

Contents: 55% Wool, 35% Mercerised Cotton, 5% CoolMax®, 4% Nylon, 1% Elastane.

Size: Small, Medium and Large



White



## Wool/Cotton Cushion Sole Sport Sock Style 47E

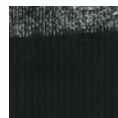
Style Code: 47E

With a springy wool cushion sole inside and absorbent mercerised cotton outside this is an excellent sock for high impact sport like squash. The sock has a regular length leg for warmth and has nylon reinforcement in heels and toes for longer wear.

Colour: White

Contents: 60% Australian Wool 35% Mercerised Cotton, 4% Nylon, 1% Elastane

Size: Medium and Large



Black



Antelope



## Hiking Sock Style 61C

Style Code: 61C

The Hiking sock is designed with a breathable wool cushion sole and the adjacent CoolMax® draws perspiration away from the skin to keep feet dry. The outside of the sock is hard-wearing nylon and non-slip elastic sections around the instep and ankle stop the sock slipping and reduce chafing.

Colours: Black, Antelope

Contents: 51% Fine Merino Wool, 33.5% Nylon, 14% CoolMax®, 1% Lycra, 0.5% Polyester.

Size: Small, Medium and Large





Black



## Ice + Snow Sock Style 64F

Style Code: 64F

A heavyweight thick sock especially designed for keeping feet warm in extreme conditions. Fine merino wool has been used to create a very soft thick inner wool cushion sole, foot and leg to keep feet warm while a nylon outer layer keeps that warmth locked in and ensures long life. Non-slip elastic sections around the foot reduce friction between the sock and the boot.

Colour: Black

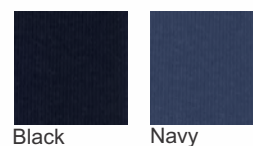
Contents: 76% Fine Merino Wool, 22.5% Nylon, 1% Elastane, 0.5% Polyester.

Size: Small, Medium and Large

Extra Wide Sock foot sizes	Australian/UK shoe size	European shoe size	Foot length	Circumference around foot (A)	Circumference across heel (B)	Circumference of lower leg (C)
Wool Blend - Small 50% wool 50% nylon (Style 67X05)	Ladies 3-8 Men's 4-7	35-41	22-28cm	16-45cm	23-48cm	16-50cm
Wool Blend - Medium 50% wool 50% nylon (Style 67X07)	Ladies 8-11 Men's 7-10	40-45	25-28cm	16-46cm	23-48cm	16-50cm
Wool Blend - Large 50% wool 50% nylon (Style 67X10)	10-13	46-51	30-35cm	18-46cm	23-48cm	16-50cm
Cotton Blend - XL 85% mercerised cotton (Style 67X14)	13-16	50-55	36-38cm	18-48cm	23-48cm	16-50cm
Wool Blend - XL 50% wool 50% nylon (Style 67X14)	13-16	50-55	36-38cm	18-48cm	23-48cm	16-50cm
Wool Blend - XXL 50% wool 50% nylon (Style 67X16)	14+	55+	38-45cm	18-49cm	23-48cm	16-50cm



Comfortable low pressure fit for any size



## 85% Mercerised Cotton Health Sock® Style 57X – Extra Wide

Style Code: 57X

An extra large sock knitted with a 1 X 1 rib for extra sideways stretch to suit a 14+ shoe. Absorbent and breathable mercerised cotton combined with fine elastane throughout gives an elegant smooth fit. Light to medium weight for year-round wear. A Health Sock® with no tight elastic top.

Colour: Black, Navy

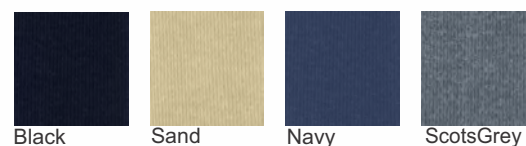
Contents: 85% Mercerised Cotton, 13% Nylon, 2% Elastane.

Size: X Large

Extra Wide Sock foot sizes	Australian/UK shoe size	European shoe size	Foot length	Circumference around foot (A)	Circumference across Heel (B)	Circumference of Lower Leg (C)
Wool Blend - Small 50% wool 50% nylon (Style 67X05)	Ladies 3-8 Men's 4.5-7	35-41	22-28cm	16-45cm	23-48cm	16-50cm
Wool Blend - Medium 50% wool 50% nylon (Style 67X07)	Ladies 8-11 Men's 7-10	40-45	25-28cm	16-46cm	23-48cm	16-50cm
Wool Blend - Large 50% wool 50% nylon (Style 67X10)	10-13	46-51	30-35cm	18-46cm	23-48cm	16-50cm
Cotton Blend - XL 50% wool 50% nylon (Style 67X14)	13-16	50-55	36-38cm	18-49cm	23-48cm	16-50cm
Wool Blend - XL 65% merino wool cotton (Style 67X14)	13-16	50-55	36-38cm	18-49cm	23-48cm	16-50cm
Wool Blend - XXL 50% wool 50% nylon (Style 67X18)	14+	55+	38-45cm	18-49cm	23-48cm	16-50cm



Comfortable low pressure fit for any size



## Wool/Nylon Low Pressure Health Sock® Style 67X – Extra Wide

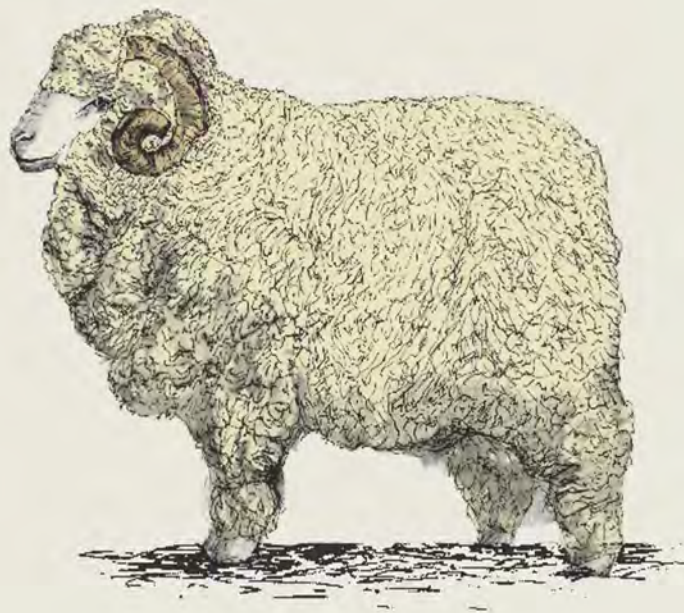
Style Code: 67X

This extra large sock is a soft Health Sock® made with fine merino wool blended with nylon for a long life. It is knitted with a rib to allow extra stretch around the foot and leg and to provide a firm fit so that the sock does not slip or become baggy. Extra large socks are knitted wider than a normal sock to fit larger feet which are usually wider or more bulky. As socks are a knitted fabric, when they are stretched width-ways the sock necessarily becomes shorter. Minimum leg and foot pressure is achieved by using twisted wool/nylon for stretch instead of elastane. This is a hardwearing sock suitable for year-round wear.

Colours: Black, Sand, Scots Grey, Navy(XXL)

Contents: 50% Fine Merino Wool, 50% Nylon.

Size: Small, Medium, Large, X Large and XX Large



**HumphreyLaw®**