

5

## TRADITIONAL FILTRATION



**DELLA TOFFOLA** **PADOVAN** **cadalpe**



- Medium and high solids **vacuum filtration**
- **Pressure** (flooding) for liquids with low solid content
- **Plate and sheet filtration**, brilliant or sterilizing

► Range: from 1 to 100 ton/h

→ [Explore the full range of products](#)

5

## CROSSFLOW AND ORTHOGONAL FILTRATION



**DELLA TOFFOLA** **PADOVAN** **parmeare** **cadalpe**



- Filtration of must, wines and sparkling wines with **filters having ceramic membranes, hollow fiber and organic spiral and with sintered 316 stainless steel membranes**
- Sediment filtration with **ceramic filters tubular static or rotary discs**
- Wines and sparkling wines filtration with **orthogonal organic membrane systems**

► Range: from 1 to 100 ton/h

→ [Explore the full range of products](#)

5

## ULTRAFILTRATION, NANOFILTRATION, OSMOSYS



**PADOVAN** **parmeare**



- **Ultrafiltration** automatic, manual, semi-automatic or fully automatic plants
- **Nanofiltration**
- **Reverse osmosis**

► Range: from 50 l/h to 60 ton/h

→ [Explore the full range of products](#)

5

## CONTINUOUS TARTARIC STABILIZATION



**PADOVAN** **parmeare** **cadalpe**



- **Automatic** low-temperature systems, operating with glycol or direct gas evaporation
- Coupled with **hydrocyclones** and **orthogonal micro-filters** for separation of tartrates
- Suitable for still or pressure-tested sparkling wines
- **Ion exchange resin systems** for ambient temperature stabilization

Optionals:

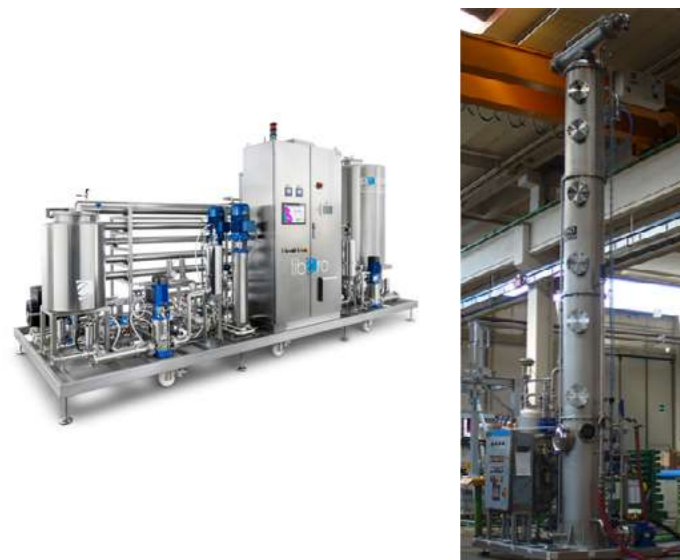
- **PED tested**
- **Blending**

► Range: from 1 to 60 ton/h

→ [Explore the full range of products](#)

## 6 DEALCOLATION

p<sup>2</sup>rmeare



- Partial and complete dealcoholation systems
- Two-stages automatic process: nanofiltration unit combined with stripping column
- Achievement of an alcoholic content up to **<0.5% alc total**
- Extreme respect of **aromas**
- Total absence of cooked flavors
- High quality **alcohol recovery** 70-80% alc
- **Complete recovery of vegetation water** (Libero Wine)
- Process obtained at ambient temperature

► Range: from 10 to 80 ton/day

➔ [Explore the full range of products](#)

## 6 CONCENTRATION AND DESULPHURATION

**PADOVAN** **cadalpe**  
MACCHINE ENOLOGICHE



- **Forced circulation, falling film or scraped surface evaporation** plants
- Desulphurizer with low consumption of energy and water
- **Mechanical steam recompression** for their reduction
- Reduced holding time at high temperature
- Total condensate recovery

Optionals:

- Aroma recovery.
- TRV (thermal vapor recompressor): thermodynamic steam/vapor recompressor

► Range: from 1 to 60 ton/h

➔ [Explore the full range of products](#)

## 6 DEAERATION, MIXING AND CARBONATION

**PADOVAN**



- Plate heat exchanger for cooling
- **Static mixers combined** with porous candles sintered stainless steel
- **Monoblock configurations** for wine based beverages
- **CO<sub>2</sub> gassing:**
  - Magnetic and mass flowmeters
  - Carbonation and holding
  - Digital signals BUS & NET

Optionals:

- Refractometric degree control
- In-line O<sub>2</sub> and CO<sub>2</sub> concentration
- Vacuum deaeration or double vacuum deaeration or with selective membranes

► Range: from 1 to 60 ton/h

➔ [Explore the full range of products](#)

## 6 DISTILLATION

**FRILLI** **cadalpe**  
MACCHINE ENOLOGICHE



- Customized approach
- **Sustainability / Carbon neutrality**
- Design / Engineering
- Production and supply
- **Revamping**
- Assembling, commissioning and training
- Continuous and small discontinuous distillation plants

► Range: from 1 to 2,000 hl/day

➔ [Explore the full range of products](#)