



MIXQUIP. YOUR PROCESS MATTERS

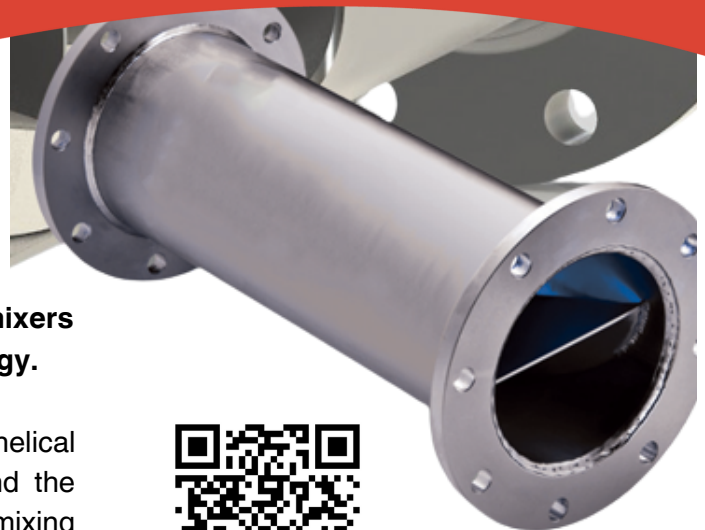
STATIC MIXER

STATIC: SERIES 900

HIGH EFFICIENCY MOTIONLESS MIXER

Mixquip Series 900 Hygienic Motionless Inline mixers incorporate advanced designs in mixing technology.

Mixquip Series 900 mixers use advanced design helical shaped mixing elements arranged within a pipe and the energy of the pumped liquids. This creates powerful mixing action as the flow is agitated by these elements. Static Inline motionless mixers optimise mixing effectiveness with very low pressure losses. Uniform and predictable blending provides savings in your processing times and rapid returns on your investment.



SCAN TO LEARN
MORE

APPLICATIONS

- Additions to potable water
- Food flavour additions
- Oil blending
- Food colour additions
- Addition of catalysts
- Pharmaceutical blends
- Additions to screened wastewater
- Chemical dosing



WATER TREATMENT



OIL & GAS



FOOD & BEVERAGE



CHEMICAL



PHARMACEUTICAL

*these applications are not limited. Please talk with our team if you have a specific duty.

National Call: 1300 649 784
sales@mixquip.com | www.mixquip.com

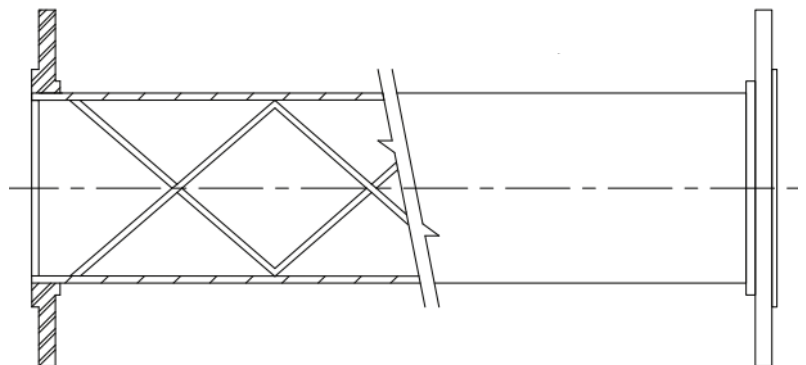
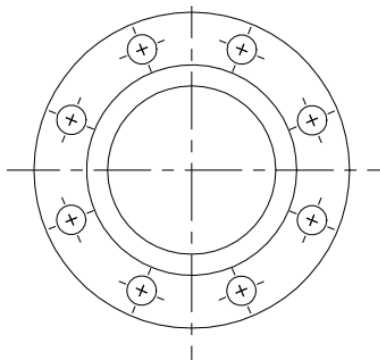
mixquip[®]
fluid mixing equipment

ADVANTAGES

- Whether your application involves low viscosity fluids, such as water-based solutions or higher viscosity liquids such as oils and emulsions, Series 900 Inline Static Mixers are designed to optimise your blending process.
- Aeration free mixing.
- Easy to install.
- Available in many alloys/polymer materials.
- Sanitary designs available.
- Low maintenance.
- Reduced power requirements.
- Can be used to accelerate chemical reactions.

MIXQUIP ADVANTAGE

Mixquip range of products are Australian-made, stocked, assembled and distributed from our Sydney based factory, allowing for efficient response to market needs with short lead times and quality service. Mixquip range of agitators can also be purchased online, backed by a great support team who understand your process matters.



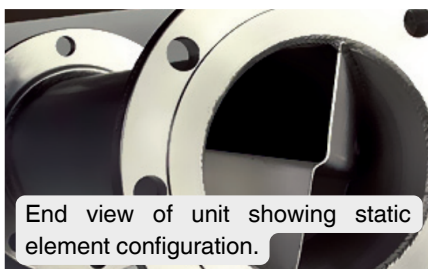
OPERATING PRINCIPLE

Series 900 mixers are a series of geometric shaped mixing elements fixed within a pipe (tube), which use the energy of the flow stream to create mixing between two or more fluids. Most commonly, the fluids are liquid; however, static mixers are used to mix gas streams, disperse gas into liquid or disperse immiscible liquids. The units can vary from 25mm to over 1 meter in diameter.

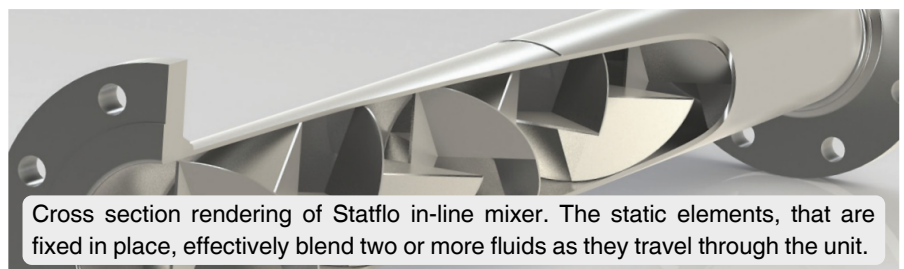
OPTIONS

Mixquip manufactures Inline Mixer units in a range of configurations including sanitary designs where the elements are able to be removed for ease of cleaning. We also supply units with special finishes such as electropolishing and these elements are tested to comply with guaranteed surface roughness requirements.

FEATURES



End view of unit showing static element configuration.



Cross section rendering of Statflo in-line mixer. The static elements, that are fixed in place, effectively blend two or more fluids as they travel through the unit.

National Call: 1300 649 784
sales@mixquip.com | www.mixquip.com

mixquip®
fluid mixing equipment