

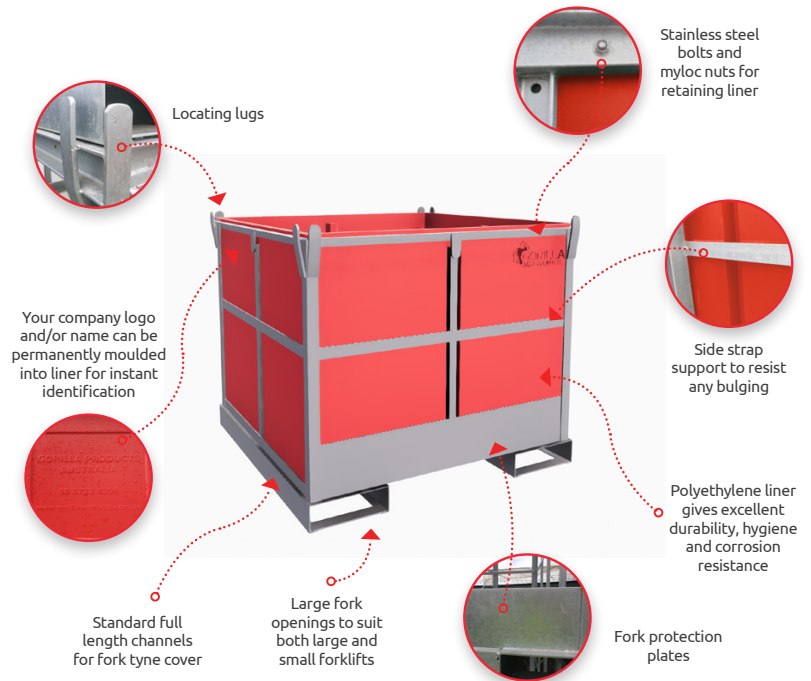
1000L Produce Bin Std.

OVERVIEW

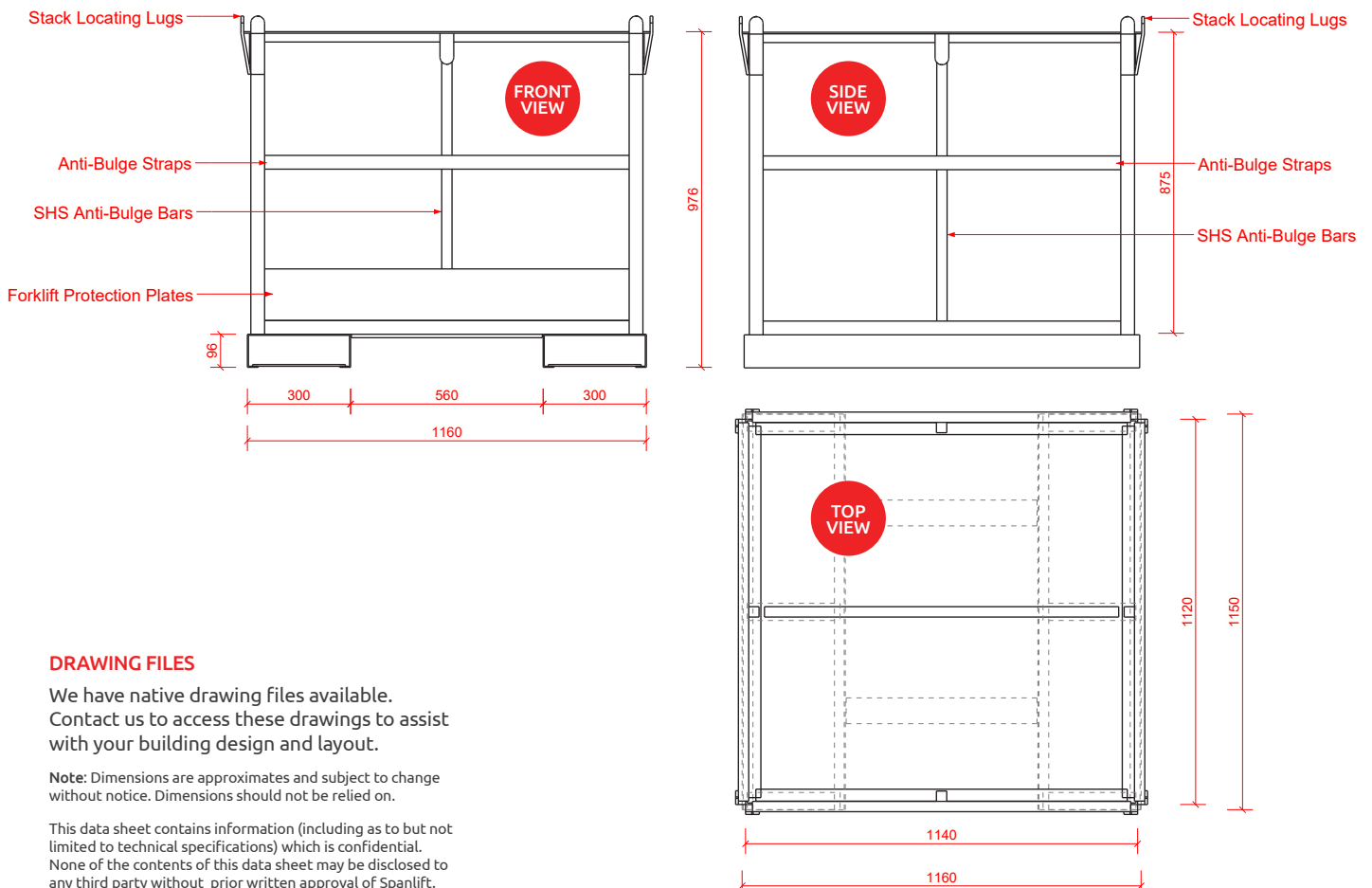
- Tough 1000L Produce Bin
- Includes hot dip galvanized frame and a food-grade polyethelene liner
- Multiple stacking design for space saving
- Forklift manoevrability for easy rotation
- Choose from a range of colours for storage identification

OPTIONS

- Logo branded into the bin liner for instant identification
- Logo and tracking number engraved on a plate on the bin frame



Product Code	Coating	Capacity	Kg/Unit	Recommended Max Stacking
PB-1000-FANDL	Hot Dip Galv	1000L	115	2



DRAWING FILES

We have native drawing files available. Contact us to access these drawings to assist with your building design and layout.

Note: Dimensions are approximates and subject to change without notice. Dimensions should not be relied on.

This data sheet contains information (including as to but not limited to technical specifications) which is confidential. None of the contents of this data sheet may be disclosed to any third party without prior written approval of Spanlift.

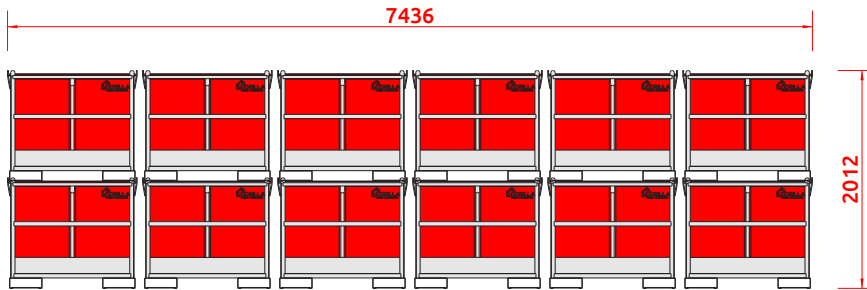
© Spanlift Australia Pty Ltd 2022

TRANSPORT GUIDE

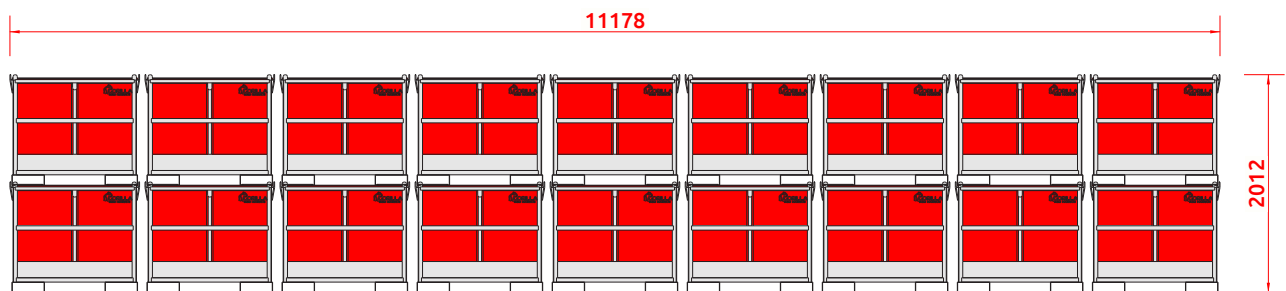
Note: Top loading is only applicable to empty bins due to total load weight restrictions

Gorilla Produce Bins are so industry-centric that they deliver on all key commercial drivers. The bin is housed into a fully hot dip galvanized pallet size steel frame, which is designed for use by forklift from two sides for rotation, and a pallet

truck from the opposite two sides for casual movement. It has strong fork protection plates to prevent bin damage and is designed to multiple stack.

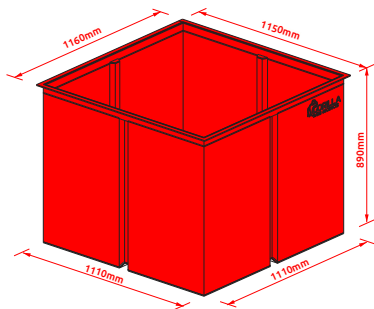


Note: Dimensions based on bins being stacked 88mm apart.



LINERS & COLOURS

- Made to suit standard steel frames
- Custom logo plates available
- Food grade polyethylene



Product Code	Length	Width	Height	Weight
PB-1000-LINER-CLR	1110mm	1110mm	890mm	29kg

Standard

Made to Order*



Gorilla Red



Orange Spray



Standard Yellow



Trans Blue



Wheat (Harvest®)



White (Surf Mist™)



Black Night (Night Sky)



Mist Green (Pale Eucalyptus®)

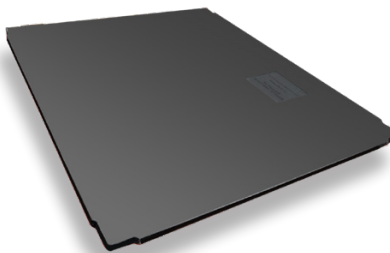


Heritage Green (Cottage Green™)

*All made to order items are approximately 4 week lead time from order. Must be ordered in multiples of 2.

PRODUCE BIN LIDS

- Fits current bin liners
- Black only
- Easily handled, only 12kg
- Stacks neatly together
- Bins can be stacked with lids on



Product Code	Length	Width	Height	Weight
PB-1000-LID-CLR	1160mm	1150mm	20mm	12kg

SIGNAGE & SERIAL NUMBERING

Your company logo and/or name can be permanently moulded into liner for instant identification.

