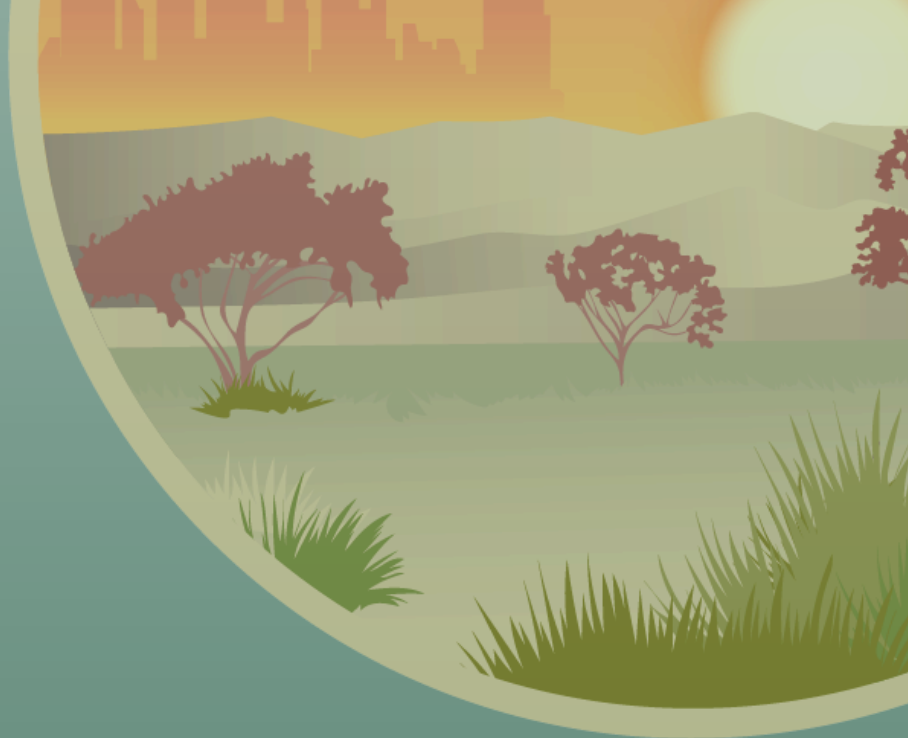




Planning
Institute
Australia



PIA Rural, Regional & Remote CONFERENCE 2025

Virtual | 12 – 13 March 2025

Program

PIA Rural, Regional & Remote Conference 2025

ruralregionalremote25.com.au



Day 1 - Wednesday 12th March 2025

11.00 - 12.30 AEDT	PLENARY 1 - Opening Keynote Session Chaired by: MC - Noor Syuhada Shamsul RPIA	
11.00 - 11.05	Welcome and Opening Address <i>MC - Noor Syuhada Shamsul RPIA, Victorian Planning Authority</i>	
11.05 - 11.08	Acknowledgement To Country	
11.08 - 11.15	PIA and Minister Welcome Addresses <i>Presented by Emma Riley RPIA (Fellow), followed by the Hon Kristy McBain, Minister for Regional Development, Local Government and Territories</i>	
11.15 - 11.55	KEYNOTE SESSION 1 - Corrina Eccles, Wadawurrung Traditional Owners Corporation <i>Designing with Wadawurrung Dja Presenting from the traditional lands of the Wadawurrung People</i>	
11.55 - 12.30	KEYNOTE SESSION 2 - Liz Ritchie, Regional Australia Institute <i>The Future is Regional Presenting from the traditional lands of the Yuin People</i>	
12.30 - 13.00 AEDT	BREAK	
13.00 - 14.30 AEDT	CONCURRENT SESSION 1A Session Chair: Aaron Petersen PIA (Assoc.)	CONCURRENT SESSION 1B Session Chair: Chloe Boyd MPIA
13.00 - 13.30 (20m+10m Q&A)	Integrating Flood Modelling into Planning: Building Resilient Communities in a Changing Climate <i>Julian Skipworth, Cumulus Engineering, Director</i> <i>Presenting from the traditional lands of the Yalukit-willam People</i>	Housing Australia Opportunities for local government - lesson learnt <i>Dr Jane Homewood MPIA</i> <i>Presenting from the traditional lands of the Wurundjeri Woi-Wurrung people</i>
13.30 - 14.00 (20m+10m Q&A)	Blowin' in the wind or hung out to dry?: The impact of wind farms on rural and regional communities <i>Tarnya Fitzgibbon RPIA, Banana Shire Council</i> <i>Presenting from the traditional lands of the Darumbal, Gangulu, Wadja, Wulli Wulli, Wakka Wakka and Iman</i>	Data-Driven Insights: Enhancing Liveability in Regional Councils through Evidence-Based Studies <i>Kylie Legge MPIA, Teresa Cooper, Place Score & Parkes Shire Council</i> <i>Presenting from the traditional lands of the Eora People of the Gadigal Nation and Wiradjuri people from Wiradjuri nation</i>
14.00 - 14.30 (20m+10m Q&A)	Regional Planning through a multi-hazard and resilient lens: delivering the Regional Adaptive Pathways Planning Project for an innovative process to future-proof Australia's regions <i>Christopher Marinopoulos MPIA, Peter Heinmiller, Value Advisory Partners</i> <i>Presenting from the traditional lands of the Wurundjeri people.</i>	Understanding housing need in regional Queensland <i>Kate Rogers, Rachel Gallagher MPIA, Department of Housing, Local Government, Planning and Public Works</i> <i>Presenting from the traditional lands of the Yugambeh Country (Kate), and the traditional lands of the Yuggera Country (Rachel)</i>
14.30 - 15.00 AEDT	BREAK	
15.00 - 16.00 AEDT	PLENARY 2 - Closing Keynote Session Chaired by: MC - Noor Syuhada Shamsul RPIA	
15.00 - 15.30	KEYNOTE SESSION 3 - Jessica McFarlane PIA (Assoc.), Murray River Council <i>Para-Planners, the key to the Planning resource issue Presenting from the traditional lands of the Yorta Yorta people</i>	
15.30 - 16.00	KEYNOTE SESSION 4 - Dr Lisa Stafford MPIA, Planning Inclusive Communities <i>How Planning Can Help Enact Change in Equity and Inclusion for all BodyMinds? Presenting from the traditional lands of the Palawa/Pakana people</i>	



Day 2 – Thursday 13th March 2025

11.00 - 12.30 AEDT	PLENARY 3 - Opening Keynote Session Chaired by: MC - Sharon Smith RPIA (Fellow)	
11.00 - 11.05	Welcome and Opening Address <i>MC - Sharon Smith RPIA (Fellow), PIA NSW Immediate Past President</i>	
11.05 - 11.08	Acknowledgement To Country	
11.08 - 11.15	PIA and Minister Welcome Addresses <i>Presented by Emma Riley RPIA (Fellow), followed by the Hon Kristy McBain, Minister for Regional Development, Local Government and Territories</i>	
11.15 - 12.30	KEYNOTE SESSION 5 - PANEL SESSION - Disaster and Resilience Panel <i>Featuring panellists: Stephen Dredge MPIA, Meridian Urban, Brendan Moon ASM, NEMA, Beck Dawson, NSW Reconstruction Authority. Facilitated by John Brockhoff RPIA (Fellow)</i>	
12.30 - 13.00 AEDT	BREAK	
13.00 - 14.30 AEDT	CONCURRENT SESSION 2A Session Chair: Sharon Smith RPIA (Fellow)	CONCURRENT SESSION 2B Session Chair: Peter Boyd
13.00 - 13.30 (20m+10m Q&A)	Farm to Plate to Compost Bin to Farm: who is in charge of connecting urban food waste with agriculture? <i>Linda Martin-Chew MPIA, The Rural Planner Pty Ltd</i> <i>Presenting from the traditional lands of the Taungurung Country</i>	Helping Small Scale Investors Build Worker Housing <i>Steve Dunn RPIA (Fellow), Roger Hastrich, Regional Housing Victoria, and Katie Xiao, Tomkinson</i> <i>Presenting from the traditional lands of the Wurundjeri Country (Steve), presenting from the traditional lands of the Wadawurrung Country (Roger) and presenting from the traditional lands of the Dja Dja Wurrung and Taungurung Peoples Country (Katie)</i>
13.30 - 14.00 (20m+10m Q&A)	Networks of Smart Rural Villages: Reinventing Garden Cities for the 21st Century <i>Dr Steven Liaros MPIA, University of Sydney & Dr. Sarah Barns, RMIT</i> <i>Presenting from the traditional lands of the Darug and GuriNgai and Gadigal Country</i>	Active transport strategies for regional communities <i>Dr Elliot Fishman, Institute for Sensible Transport</i> <i>Presenting from the traditional lands of the Wurundjeri Woi-wurrung and Bunurong Boon Wurrung peoples of the Kulin Nation</i>
14.00 - 14.30 (20m+10m Q&A)	The power of Public Open Space planning in sustainable regional development – A Victorian Case Study <i>Sarah Morgan MPIA, GHD</i> <i>Presenting from the traditional lands of the Wurundjeri people</i>	Seasonal Worker Accommodation <i>Andrea Tomkinson, Katie Xiao, Tomkinson</i> <i>Presenting from the traditional lands of the Wamba Wamba, Latji Latji, Tatti Tatti, Wadi Wadi and Barapa Barapa peoples</i>
14.30 - 15.00 AEDT	BREAK	
15.00 - 16.00 AEDT	PLENARY 4 - Closing Keynote Session Chaired by: MC - Sharon Smith RPIA (Fellow)	
15.00 - 15.30	KEYNOTE SESSION 6 - Emily Sims, Uralla Shire Council <i>Planning for Power: Transitioning People and Paddocks in the New England REZ</i> <i>Presenting from the traditional lands on Anaiwan Country</i>	
15.30 - 16.00	KEYNOTE SESSION 7 - Stephen Yarwood, city2050 <i>Planning with Foresight: Shaping Resilient Regional Futures</i> <i>Presenting from the traditional lands of the Kaurna people</i>	