



Putting people at the heart of care

At Care1A our motto is 'People First'. But this isn't just something we say - it's something we live and breathe every day. Care1A was founded on the belief that every person deserves the best care and the best quality of life possible.

Why should you choose care1?

Care1 was created as a better choice for families, carers, and those in the disability services industry who wanted - and believed in - a better and more caring future for all. 15 years on and we're still delivering on this purpose, providing highly-trained care professionals right across Australia.

Our team of compassionate nurses and skilled care workers are dedicated to providing every one of our recipients with the best quality of life, and the highest level of care, every single day. We provide temporary and permanent staff to government, private and community-based organisations - 24 hours a day, 7 days a week.

Care1 is wholly-Australian owned and run by industry trained professionals who understand and are dedicated to meeting your needs. We are committed to ensuring the highest levels of client satisfaction, and provide care staff who are carefully matched to the support requirements of our clients and their families.

Support Options

- Acquired brain injury (ABI)
- Spinal cord injuries
- Community participation

- Supported independent living
- Disability support
- Palliative care
- Respite care
- Specialised and complex care
- Behavioural support
- Therapy support

If you don't see your area of need here, or want to find out more about what we can offer, please contact us. Together we can tailor a solution to meet your unique requirements.



Our values guide everything we do for our clients and teams



Responsive

Sensitive and flexible to the unique needs of our clients.



Respectful

Treating people with consideration and dignity by embracing diversity.



Integrity

Fair, honest, trustworthy, committed and accountable.



Innovation

Improving services to match the changing needs of our clients.

“

I didn't think anybody could care for my Dad better than I could ... but gladly, I was wrong. The Care1 staff are well trained and focused on Dad achieving the best possible rehabilitation outcomes. We are extremely happy with the service

James A, family member
of a Care1 client

Navigating the world of disability care

Here are some answers to frequently asked care questions. If you have a specific question, please contact us.

What is the NDIS?

The NDIS (National Disability Insurance Scheme) is the federal organisation that offers support to Australians with a disability. It is the role of the NDIS to provide funding to all Australians who have a permanent and significant disability under the age of 65 years old. As well as funding, the NDIS provides support by being a hub of information that helps connect people living with a disability to the services available within their communities. Care1 is an approved NDIS service provider. Find out more:

www.ndis.gov.au

What is icare?

The icare Lifetime Care Scheme pays for treatment, rehabilitation and community support services to people who have been severely injured in a motor accident in NSW, regardless of who was at fault in the accident. A participant is eligible for the scheme if they present with the following injuries: spinal cord injury, traumatic brain injury, amputations, severe burns or are permanently blind as a result of the accident. Care1 has been an approved provider to icare lifetime care for almost a decade and specialises in spinal cord injury and acquired brain injury care. Find out more: www.icare.nsw.gov.au

Do you conduct staff background checks?

Care1 is committed to providing the highest quality staff. Central to this is our ongoing screening of all care staff to ensure the care you receive is from qualified, reliable and honest professionals. These checks include:

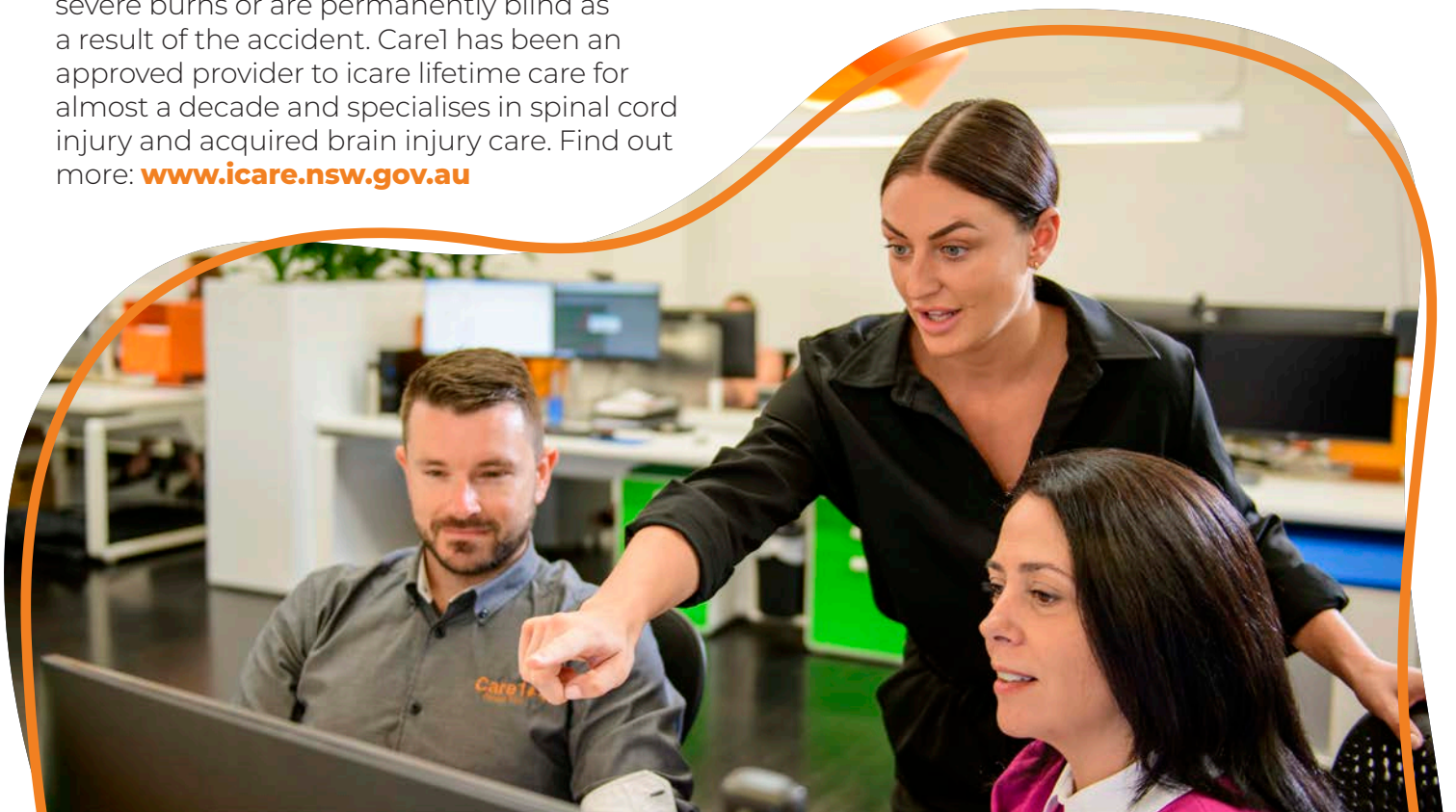
- Working with children
- Industry related reference check
- National Police Check
- Qualification verification
- Current nurses registration (where applicable)

How much do your services cost?

Care1 can provide cost effective fee-for-service options to clients who are not funded under the NDIS or other care and support models. Contact us for a more accurate assessment of your needs.

Further reading

You are definitely not in this alone. Even though caregiving can feel lonely and isolating, there is so much support available to make this time easier on you. To get started visit our website for a full list: www.care1.com.au/tips-and-advice/helpful-links





A word from our clients

“

We were daunted by the prospect of having carers in our home and unsure of what to expect. Any requests or difficulties have been dealt with quickly and the problem resolved. The regular carers who come to our home are friendly, professional, considerate and sensitive to our situation and needs. We are more than happy.”

Joanna, N (Family of client)

“

The best decision we ever made was changing to Care1 as Mum has just started to go upwards due to the improved level of care provided by Care1. I am very happy and thankful to everyone for their hard work.”

Joanna, N (Family of client)



Contact us

Find out how we can help make a difference in the life of a loved one, or to help you take the next step in your caring career.

 **1300 422 731**

 **services@care1.com.au**

 **www.care1.com.au**



ABN: 83 120 730 163