



# ALGA Roads Congress

---


Russell Hamilton  
A/Project Director

12 November 2025

INLAND  
RAIL 



# Acknowledgement of Country



Inland Rail acknowledges the Traditional Custodians of the land on which we meet today, and pay our respects to their Elders past and present. We extend that respect to Aboriginal and Torres Strait Islander peoples here today.

**INLAND  
RAIL** 

# Russell Hamilton

A/Project Director - Victoria  
Beveridge to Albury

A results-oriented engineer with over 14 years of experience across the full project lifecycle. I have successfully delivered complex projects across the mining, civil, and major transport infrastructure sectors.

**INLAND  
RAIL** 





**INLAND  
RAIL**

## Program overview



Enhancing our national  
freight and supply  
chain capabilities



Connecting existing  
freight routes through  
rail, road and ports



Supporting  
Australia's growth



Reducing congestion and  
carbon emissions from fewer  
long-haul trucks



# ‘Why Inland Rail’ – creating opportunities



# HOW ARE WE TRACKING?

STATUS: IN DELIVERY

## Beveridge to Narromine

**Connects existing networks** between Melbourne, Sydney, Perth, Adelaide and the Illawarra via Parkes and Narromine

On schedule for Double Stacked Operation by **Dec-2027**



# HOW ARE WE TRACKING?

STATUS: IN DEVELOPMENT

## Narromine to Kagaru

Securing the corridor and environmental approvals for future delivery





# Inland Rail in Victoria

12 sites – 6 ready for Double Stacked Operation

## Beveridge to Albury (B2A)

### Tranche 1 - Complete

- D&C Contract with McConnell Dowell
- **Construction complete**

### Tranche 2 – Delivery Phase

- ICT contract with John Holland
- **Construction to be completed by 2027**





# Beveridge to Albury – Tranche 1 complete

Murray Valley Highway (Barnawartha North)



Seymour Avenel Road bridge, Seymour



Wangaratta Station Precinct



Green Street bridge, Wangaratta



Beaconsfield Parade bridge, Glenrowan





# Construction completed at Wangaratta





# Euroa



# Benalla



# Broadford





# Inland Rail in New South Wales

## Albury to Illabo – Delivery Phase

- ITC Contract with Martinus
- **Construction complete by 2027**

## Illabo to Stockinbingal – Delivery Phase

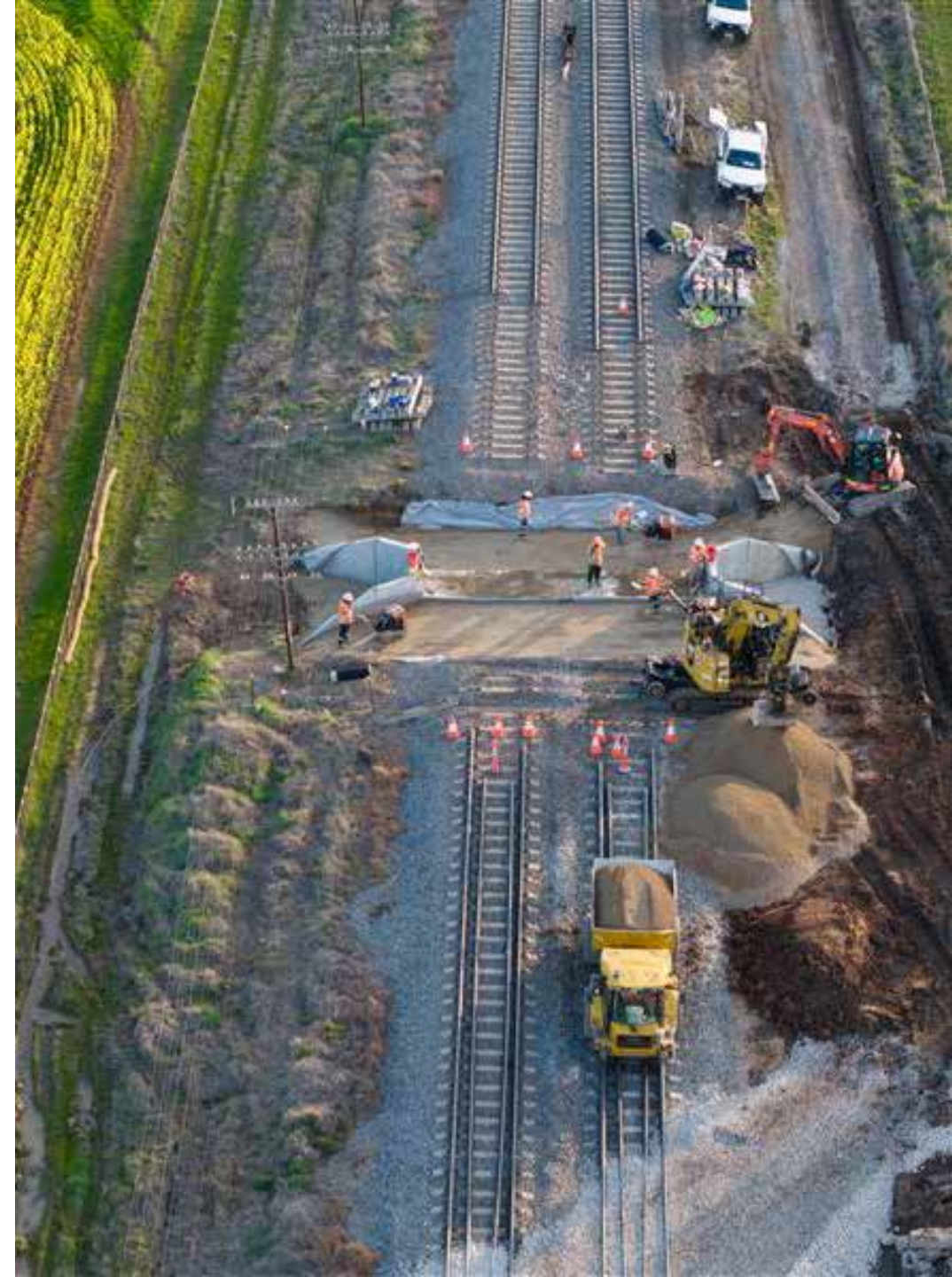
- D&C Contract with John Holland
- **Construction complete by 2027**

## Stockinbingal to Parkes – Delivery Phase

- ITC Contract with Martinus
- **Construction complete by 2025**

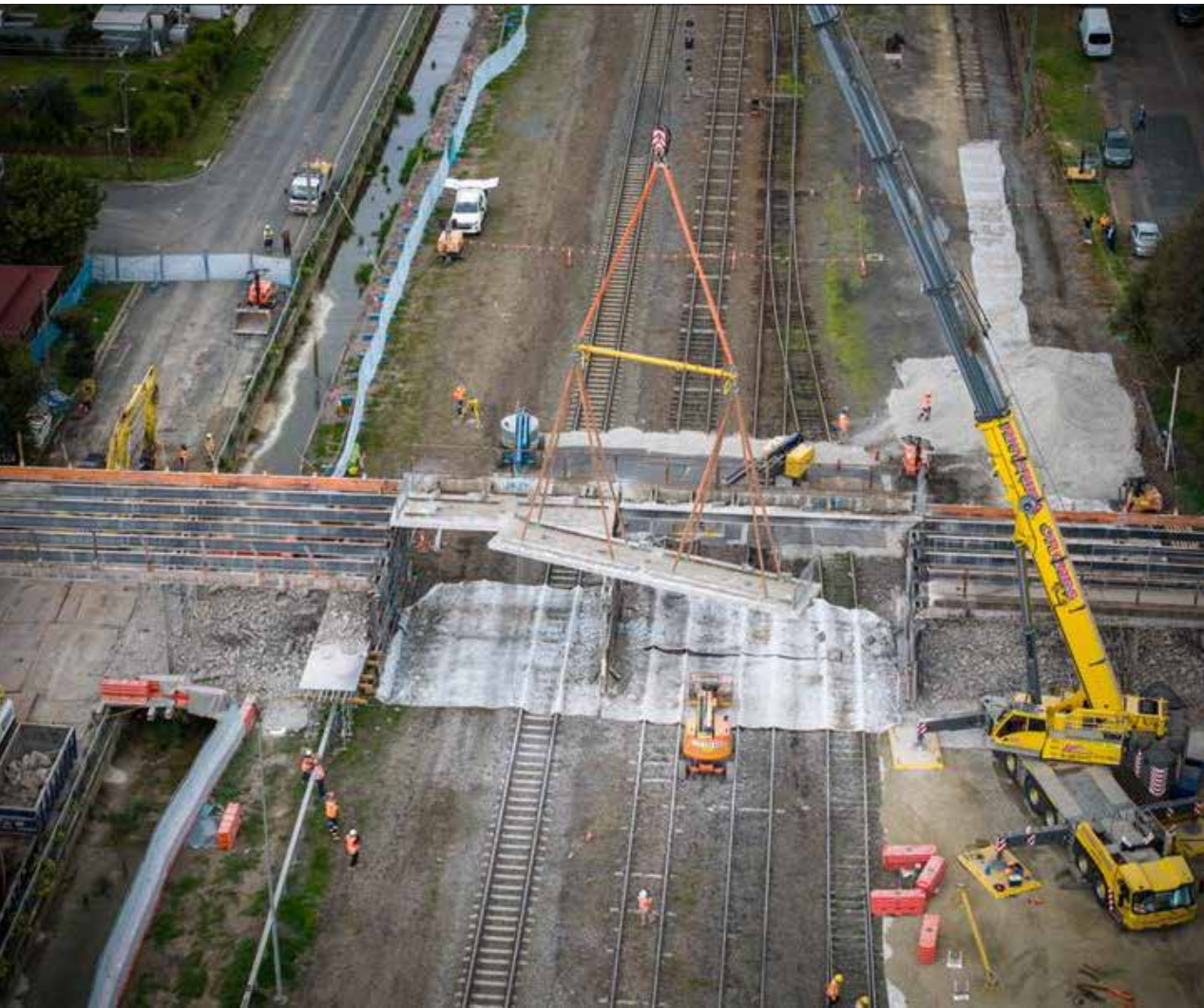
## Parkes to Narromine

- **Construction complete**





## Albury to Illabo



## Illabo to Stockinbingal





# Key challenges

---

- Project scale and complexity
- Securing funding for the remaining sections
- Asset Ownership
- Rail possessions
- Complex stakeholder and community
- Retaining a skilled workforce post 2027



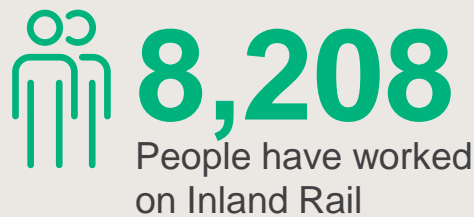


# More than just building a railway line ...



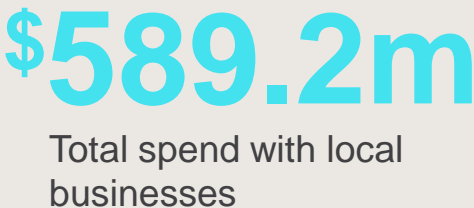
# Community Benefits

Inland Rail is a national project with local benefits, generating jobs and economic opportunities for our regions and communities right across Australia.



## Inland Rail Program

December 2018 to August 2025







# Thank You

**Russell Hamilton**

A/Project Director

[RHamilton4@inlandrail.com.au](mailto:RHamilton4@inlandrail.com.au)



**INLAND  
RAIL** 