



Australian Government
National Emergency Management Agency

Every day counts, act for resilience, today!

Big challenges need bold decisions

24 June 2025
ALGA

* Title: Global Platform for Disaster Risk Reduction
* Image: earth.nullschool.net



Australian Government

National Emergency Management Agency

DEC-16

306

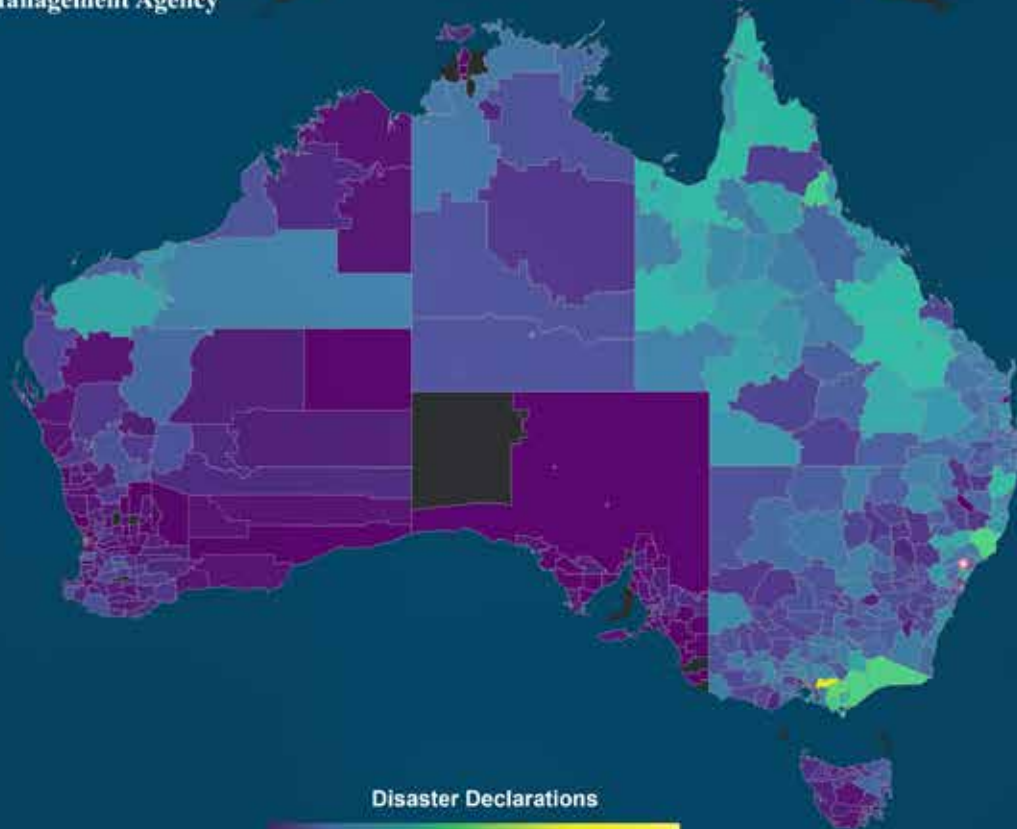
Disasters

504

LGAs Impacted

2593

Declarations



2006

2008

2010

2012

2014

2016

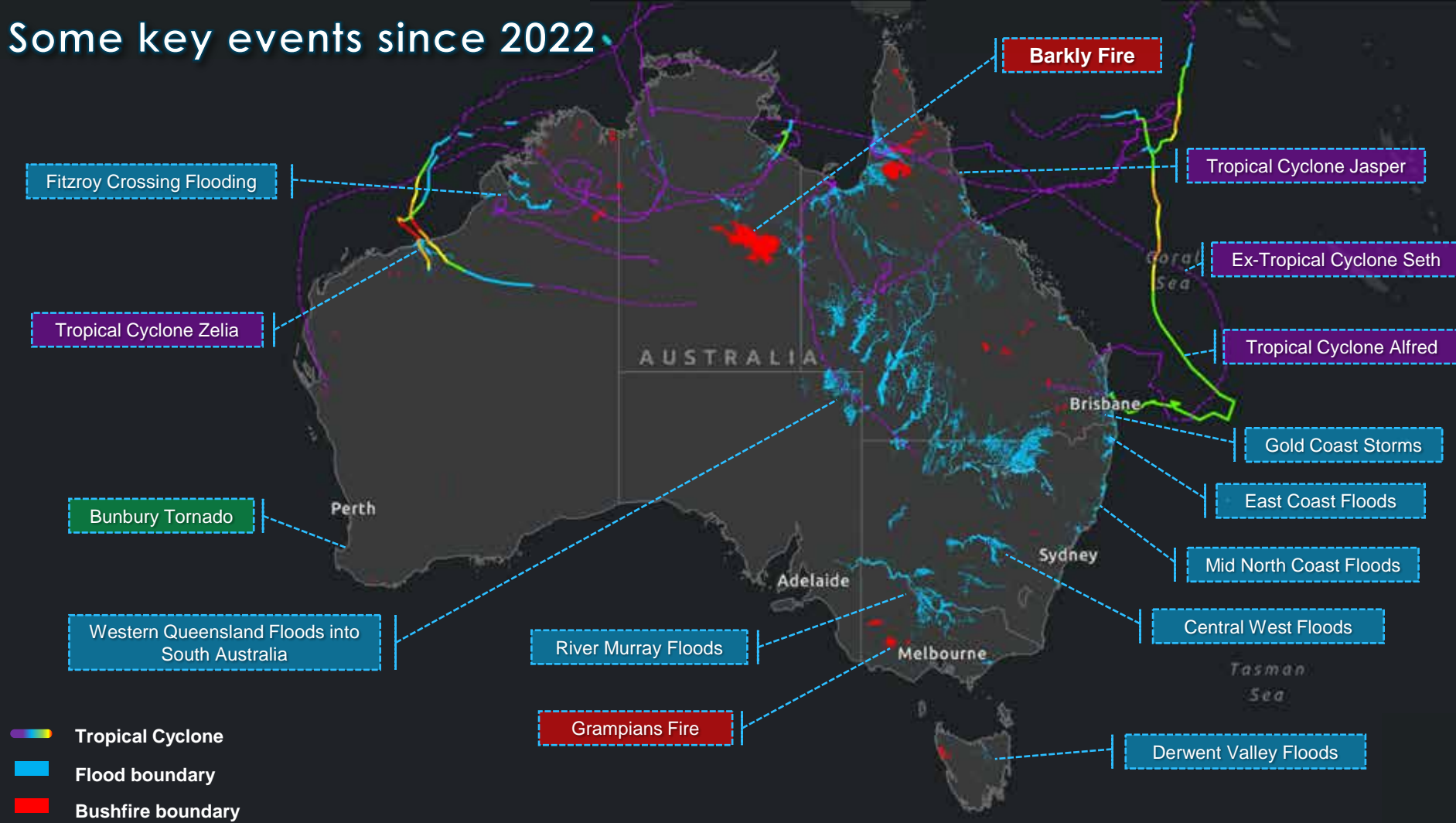
2018

2020

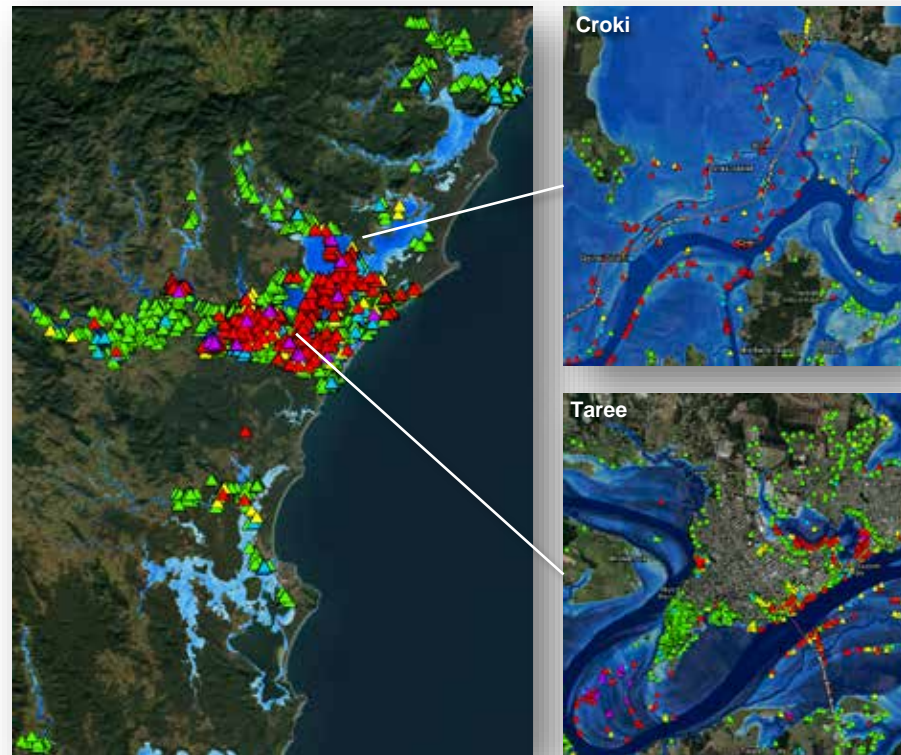
2022

2024

Some key events since 2022



What have we learned more recently?

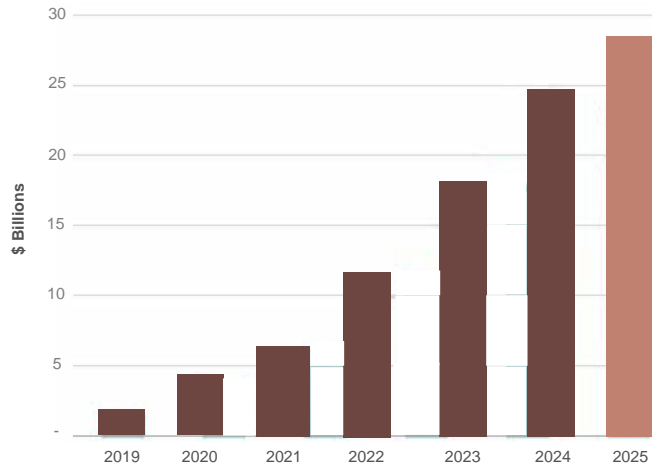


Mid-Coast, New South Wales

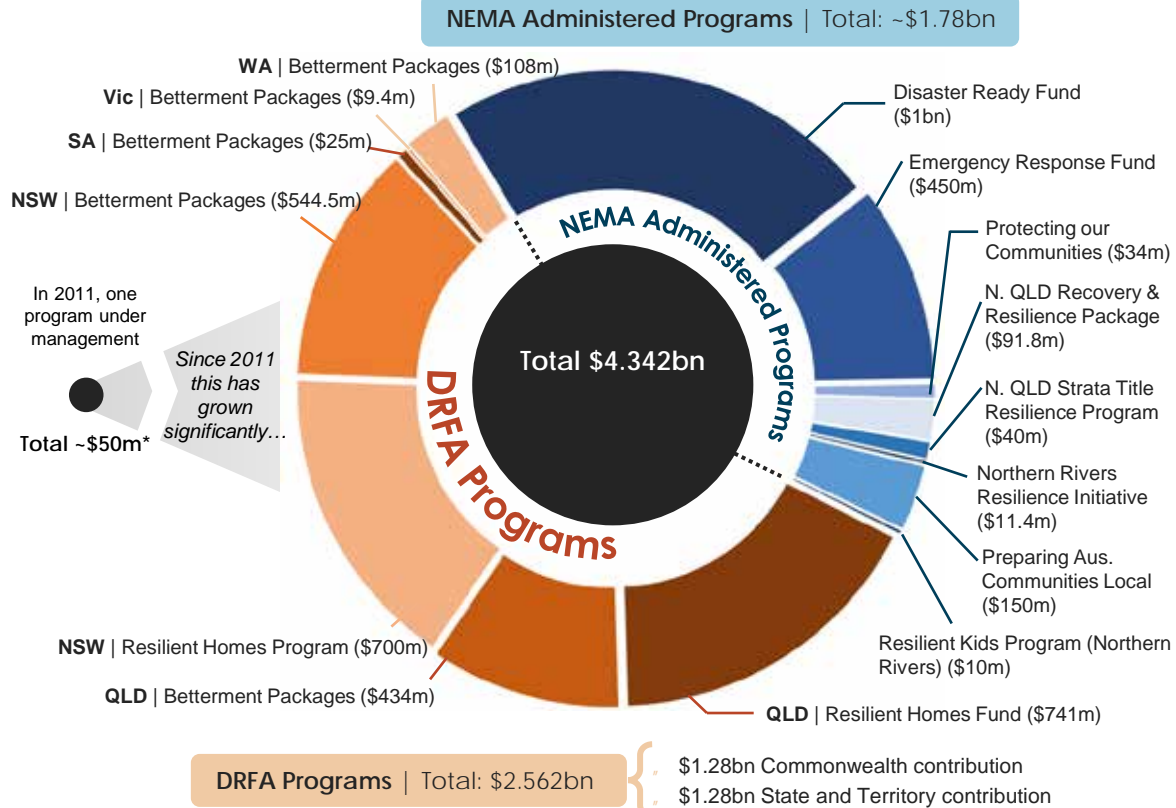
Mitigation investment: Are we hitting the mark?

Recovery and reconstruction is growing at an accelerated rate: by ~2060, this figure could increase beyond **\$130 billion**

NEMA's Administered Program Expenditure Profile 2019-2025 (YTD)

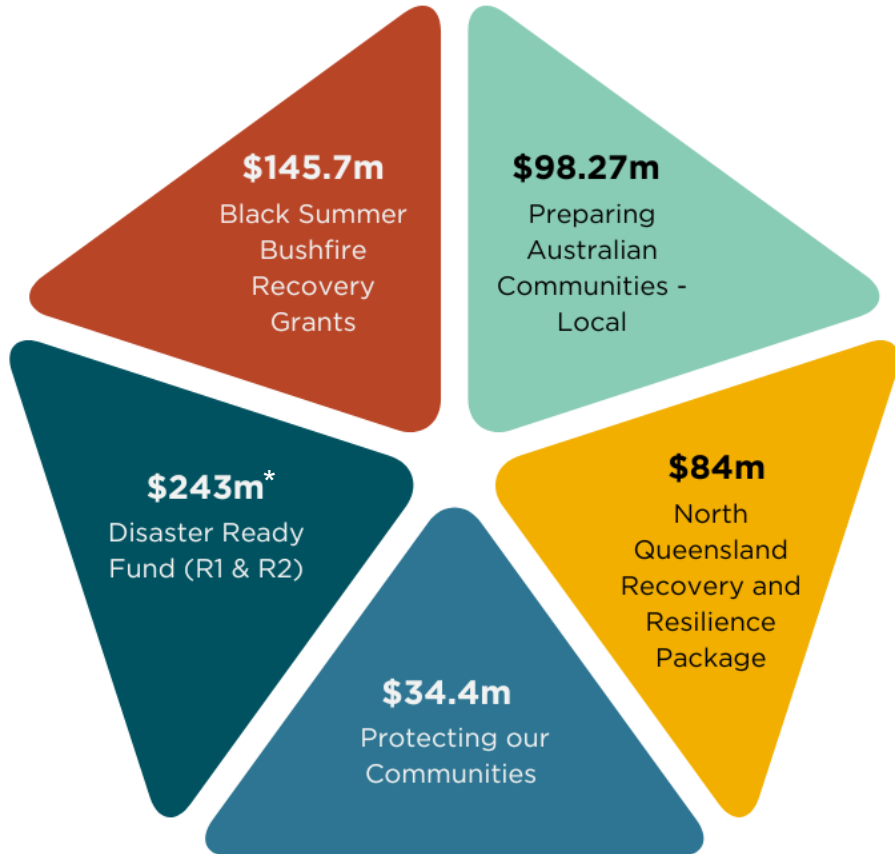


2025 programs equate to approx. \$27.6 billion



*~\$50m represents the National Disaster Resilience Program in 2011

Federally funded, locally designed and delivered



Celebrate success, but there's a lot more to do

NATIONALLY ENABLED

Warning Infrastructure

By uplifting national warning systems and funding safety projects across all levels...

Community resilience programs

By funding the different aspects of both a healthy, and disaster resilient community...

Recovery funding

By getting funding to where it's needed, when it's needed, and delivering program reform...

Resilient infrastructure programs

By funding national programs that take a holistic picture of resilience and risk reduction...



LOCALLY LED

Community safety

...we support first responders on the front line to keep themselves and their local communities safe

Local resilience networks

...we empower local groups to help local people and support broader community safety nets

Capacity to recover

...we support the recovery of local people and allow authorities to deliver money to priority areas

Building back better, safer & smarter

...we empower rebuilding that supports communities, but is also aware of systemic and local risks

What are we doing at NEMA?

ADVOCACY



Partnerships



Hazards Insurance Partnership



Research



Partnerships

COORDINATION



Risk



National Risk Profile



HRWS Summit



Reviews and learnings



Mitigation investment



Disaster Ready Fund



Disaster Recovery Funding Arrangements



Warning systems

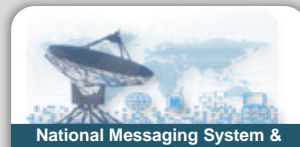
ENGAGEMENT



Capability



National Emergency Stockpile



National Messaging System & Public Safety Mobile Broadband



Workforce and equipment



Response to
offshore conflict



Freight &
Supply Chains



COVID-19



Higher Risk
Weather



Cyber
Incidents



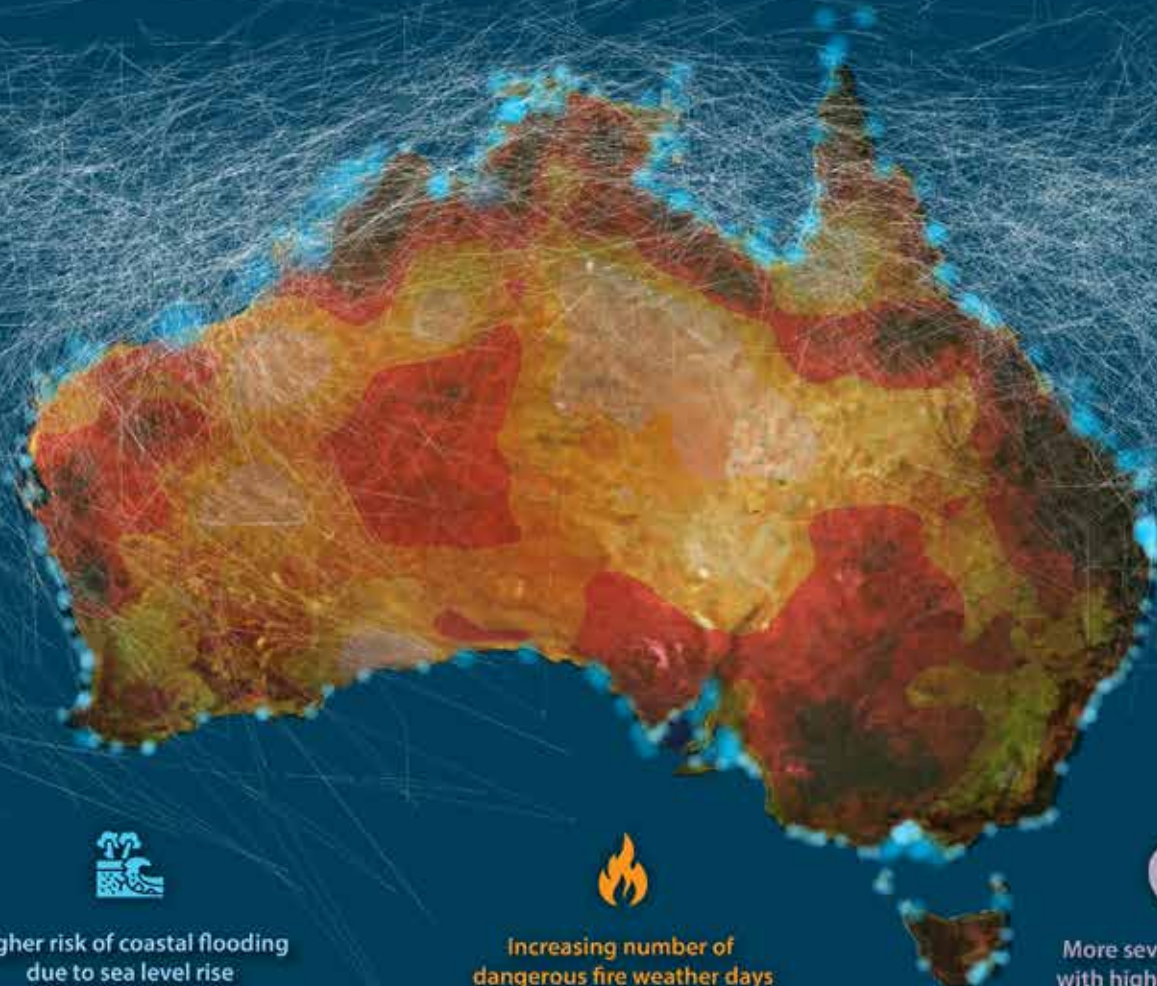
Critical
Infrastructure



Biosecurity



Space
Weather



Higher risk of coastal flooding
due to sea level rise



Increasing number of
dangerous fire weather days



More severe cyclones
with higher wind gusts