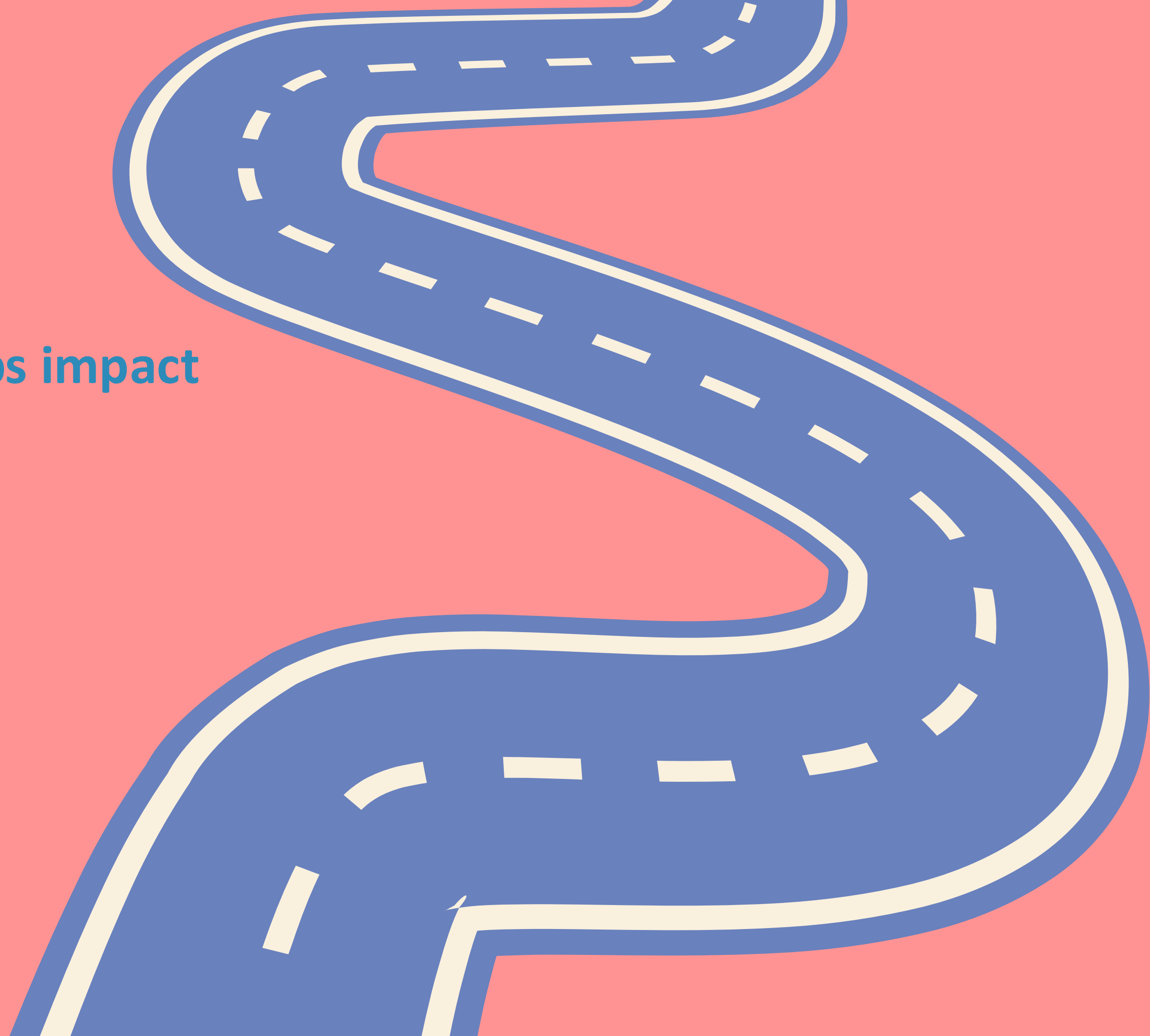
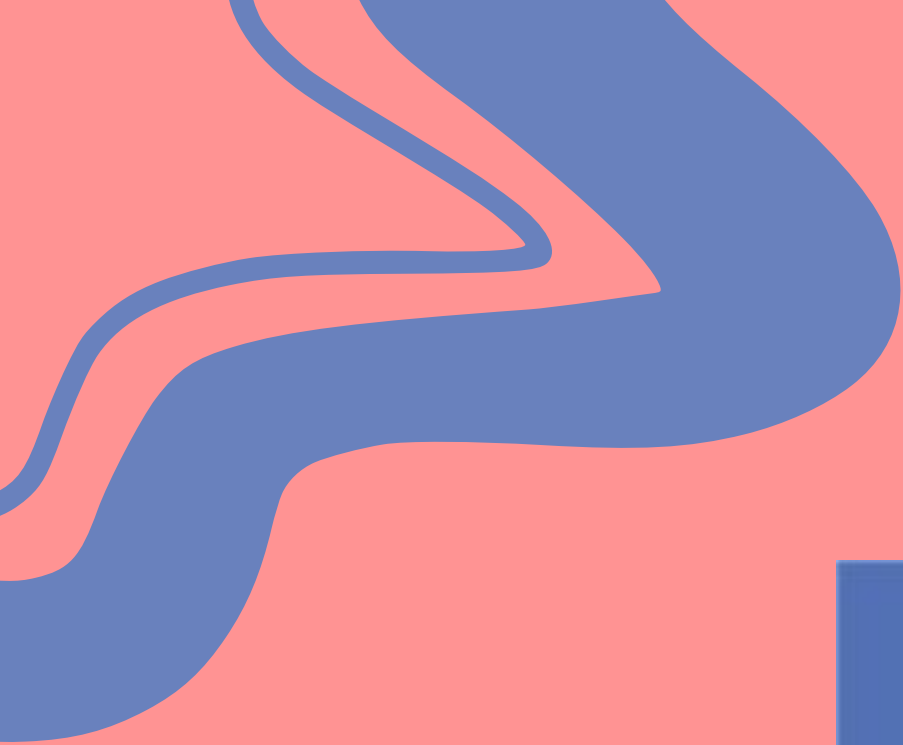


Restorative Leadership: How workplace relationships impact workplace outcomes


Gemma Edgar





We acknowledge the Ngunnawal peoples as the
Traditional Custodians of the Canberra region.

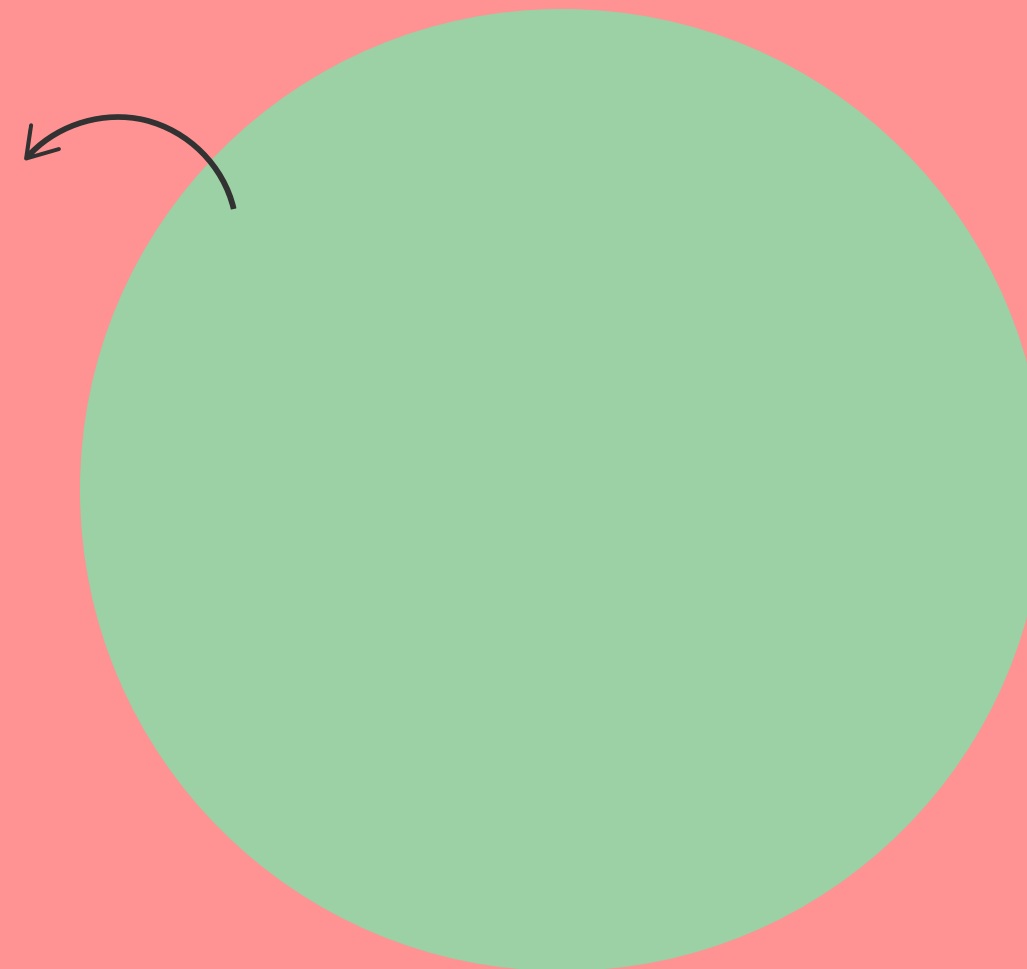
The region has always been an important meeting place and
significant to other Aboriginal groups who have celebrated
culture through the arts and cultural practices
for tens of thousands of years.



What being a
Restorative leader

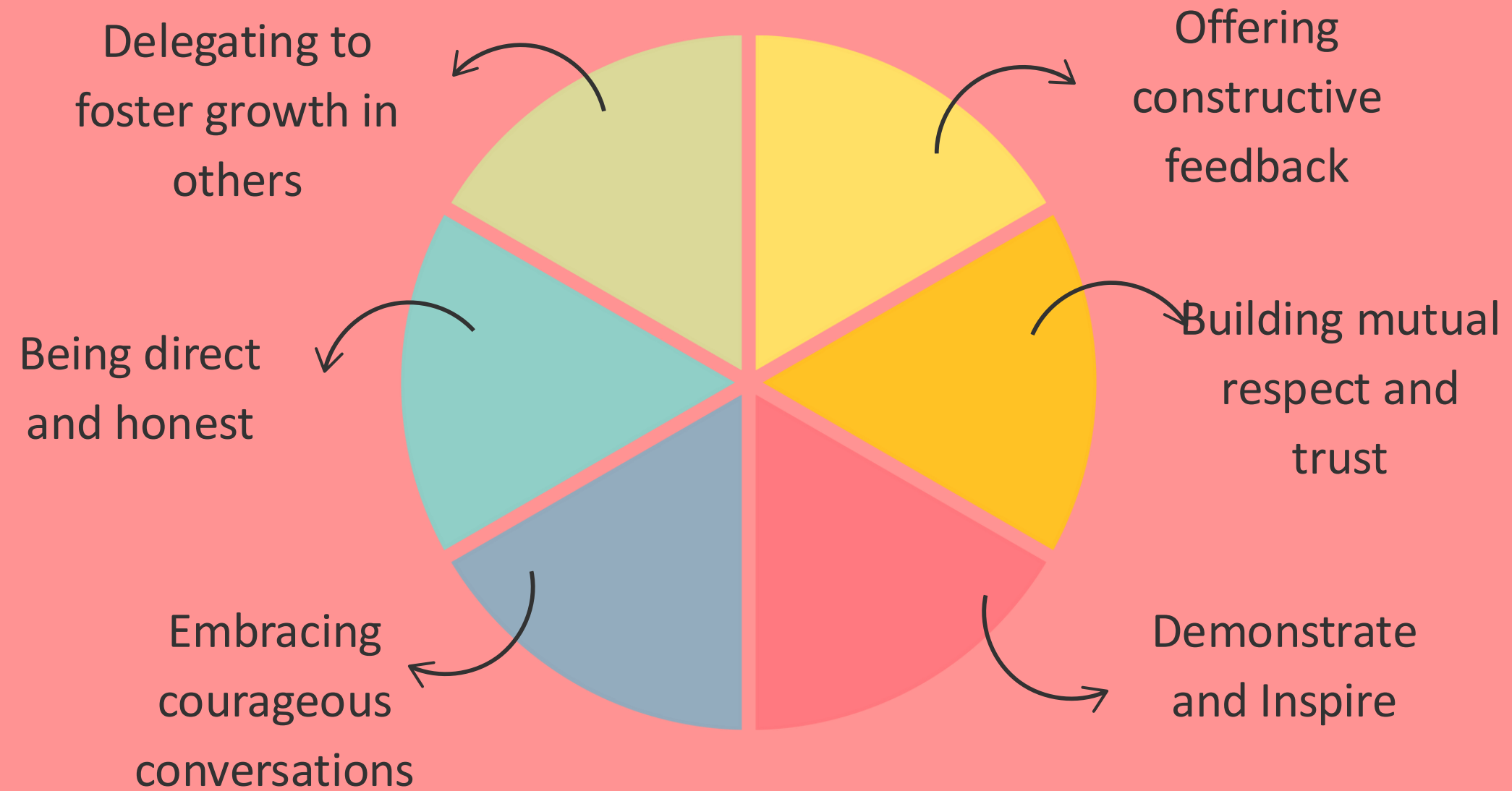
doesn't mean

Just being
"kind" to
everyone



What being a Restorative leader

really means



Relationships Are Central to Building Healthy Teams

The background features a solid blue color with two large, wavy, salmon-colored shapes on the left and right sides. These shapes are composed of multiple overlapping layers, creating a sense of depth and movement. The central text is white and stands out against the blue background.

Every Voice Holds Value

Creating a Culture of High Expectations with High Support

The background features a solid blue color with large, flowing, wavy shapes in a salmon or light red hue. These shapes are positioned on the left and right sides of the frame, creating a sense of movement and depth. The central area is a clear, solid blue space where the text is located.

Engaging in Collaborative Problem-Solving

Fostering Accountability Across the Team

Empowering Change and Growth

Connect

● Empower

● Build Relationships

A team that is characterised by positive culture and well-being, capable of withstanding and overcoming challenges together.

Enhanced communication and transparency among team members

A connected team

Empowered team members who self-manage expectations and accountability

A warm, welcoming team

A motivated team that enjoys their work, delivers a high-quality service, and fosters a positive community environment



Jump on this road with me...





