

# TRANS FORM ANCE

TRANSFORMING  
THE LEARNING  
LANDSCAPE

Learning Environments Australasia  
19th Annual Conference

28-31 MAY 2019  
Perth Convention  
& Exhibition Centre  
[transformance.a4le.org.au](http://transformance.a4le.org.au)



## ECU – JOONDALUP CAMPUS – LIBRARY 270 Joondalup Drive, Joondalup

**Architect:** JCY Architects

**Building Contractor:** Doric Group

### Educational and architectural ideas:

Far from the austere and silent libraries of the past, the library at Edith Cowan University responds to the diversity that defines university and student life. The building is as much a place as it is a combination of facilities.

Books on shelves still exist, but they are just one of the resources within a building defined more as a marketplace for learning, communication and interaction.

Built on a sloping site (4m gradient) on the west side of the campus, the building creates a new entry to the campus and brings together 4 major axes which cross in the centre of its foyer, located on level 2. The foyer level is the middle level of the library (3 levels). The 4th level of the building is occupied by the directorate, IT services and an area for library expansion currently occupied by offices.

The building is very carefully designed to exclude all direct sunlight whilst maximizing the amount of natural light.

The coloured aluminium fins play a 100% practical role while also creating a sensual and ephemeral skin. Colours are derived from pixelation of the green/blue of the bush of the area. The three fin colours mix to create a myriad of combinations and at the end of a summer's day the colours change to orange like the beautiful orange which ends all Australian days.

The building houses a bookshop, internet café, coffee shop, and integrated Japanese inspired courtyard. Also inside is a mega lab - an interactive technology-based research and learning lounge, with a variety of workspaces like beanbags, ottomans, lounge suites, booths and rooms.

The design's fundamental premise is that everyone studies differently, and if the most comfortable way to study is at home with a laptop, a coffee, a friend and a snack, why shouldn't that be possible here?

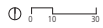
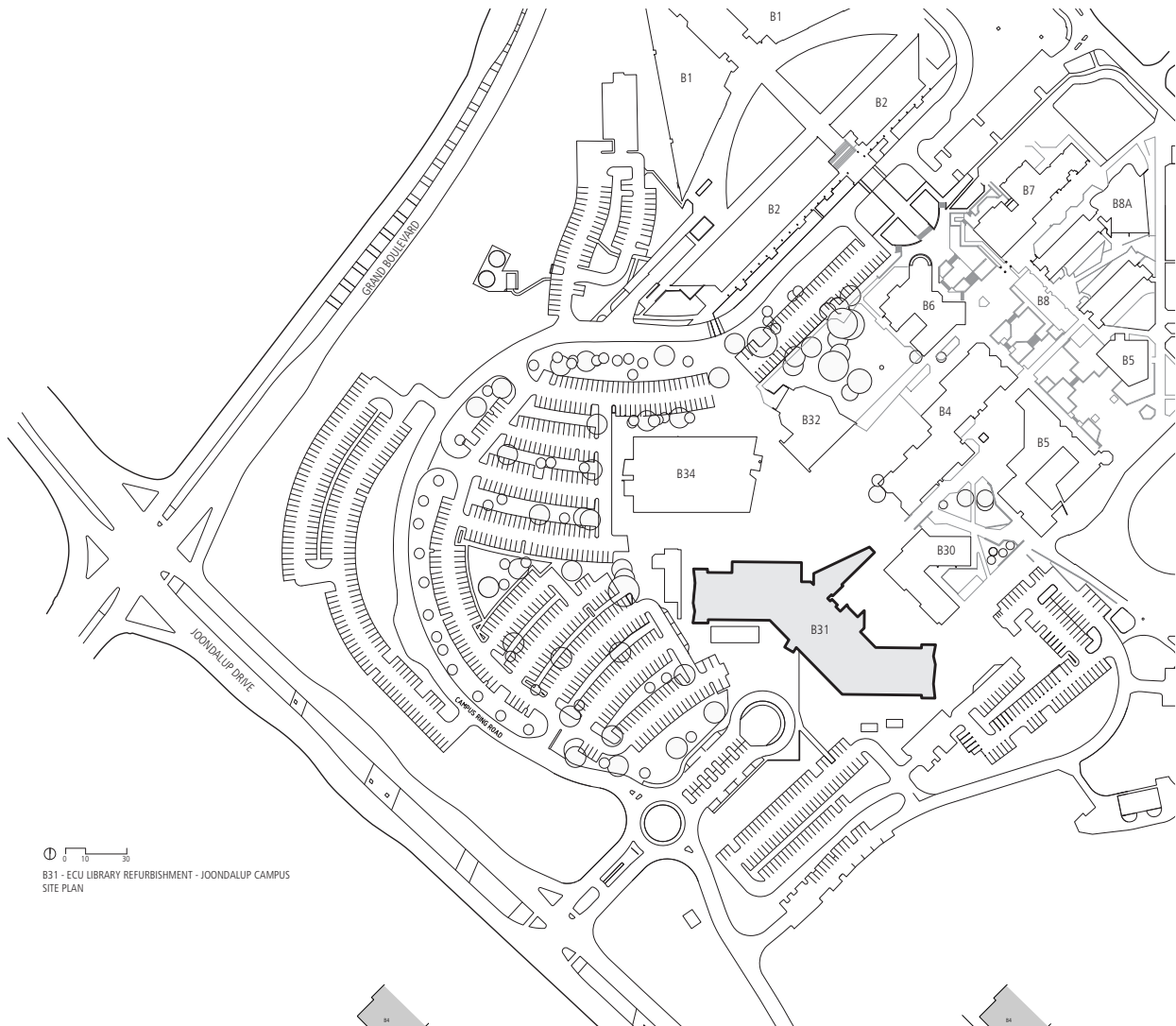


**Photographer:** Patrick Bingham Hall

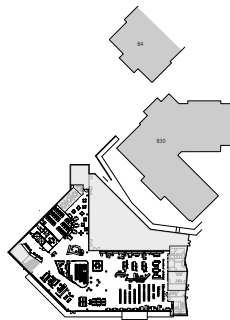
### FACTS / FIGURES:

<b>Gross Floor Area</b>	2,000m <sup>2</sup>
<b>Final Contract Sum</b>	\$25m (ex GST)
<b>Building Completion</b>	2007

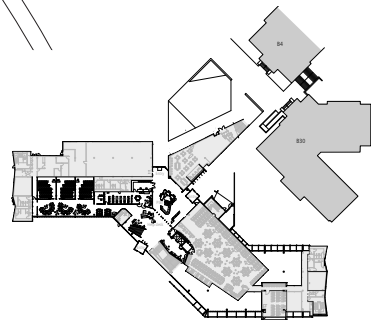
# EDITH COWAN UNIVERSITY JOONDALUP CAMPUS – LIBRARY



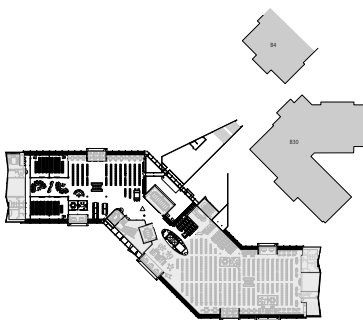
B31 - ECU LIBRARY REFURBISHMENT - JOONDALUP CAMPUS  
SITE PLAN



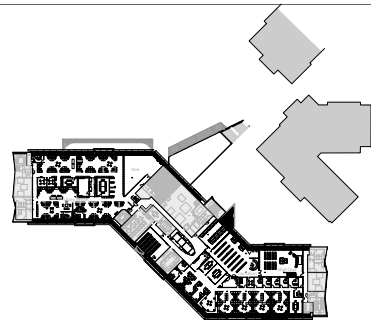
B31 - ECU LIBRARY REFURBISHMENT - JOONDALUP CAMPUS  
Floor plan - Level 1



B31 - ECU LIBRARY REFURBISHMENT - JOONDALUP CAMPUS  
Floor plan - Level 2



B31 - ECU LIBRARY REFURBISHMENT - JOONDALUP CAMPUS  
Floor plan - Level 3



B31 - ECU LIBRARY REFURBISHMENT - JOONDALUP CAMPUS  
Floor plan - Level 4

# TRANS FORM ANCE

TRANSFORMING  
THE LEARNING  
LANDSCAPE

Learning Environments Australasia  
19th Annual Conference

28-31 MAY 2019  
Perth Convention  
& Exhibition Centre  
[transformance.a4le.org.au](http://transformance.a4le.org.au)



## ECU – JOONDALUP – NGOOLARK BUILDING 270 Joondalup Drive, Joondalup

**Architect:** JCY Architects

**Building Contractor:** PACT Construction

### Educational and architectural ideas:

'Ngoolark' is the name given by the Noongar community and Elders in conjunction with Edith Cowan University to ECU's new Student Services Building on its Joondalup Campus. 'Ngoolark', the Noongar name for the 'endangered' white tailed black cockatoo also known as Carnaby's Cockatoo, is an important and integral part of the design of this important infrastructure and civic building. This project has created a new, vast and sculptural place which connects numerous buildings and 'paths' through the university which during ECU's significant recent growth, had been left disconnected.

'Ngoolark' represents a visionary investment in civic and university place making as well as architecture by ECU, which recognises that planning and development of the webs that link buildings together on university campuses are as important as the buildings themselves. Located at the confluence of a number of important campus

pedestrian paths, the site, a residual piece of land posed more of an obstacle between buildings than a connector and also formed a barrier to the connection of ECU's primary administrative buildings and the rest of the campus.

A major level difference was also a feature of the site which was previously a barrier but with the development of 'Ngoolark' is now an important part of the project's success. 'Ngoolark', composed of a vast forum and market level, a podium level and a six-storey building at its core, creates two primary ground levels which together link the Library, Administration, the Lecture Theatre, and the existing buildings to the east with all primary pedestrian links on the east, west, north and south. The whole project acts as a web with a vertical spine created by a lofty atrium located within the eastern portion of the building itself.

### FACTS / FIGURES:

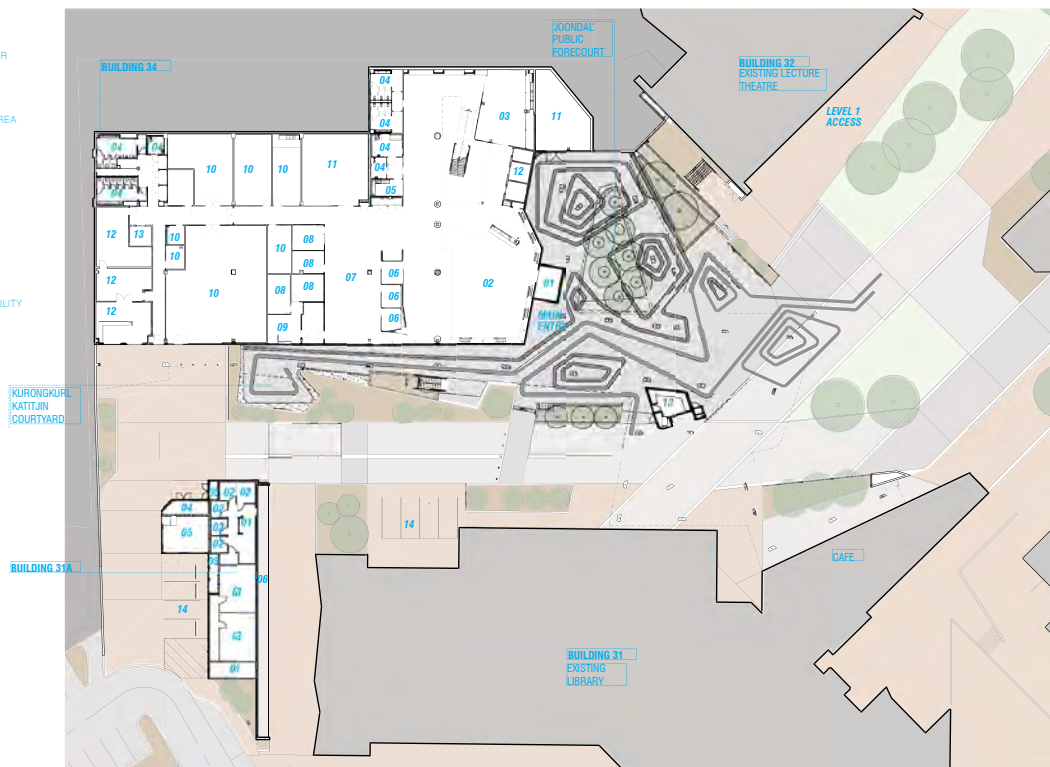
**Final Contract Sum** \$70m (ex GST)  
**Building Completion** March 2015



**Photographer:** Rob Ramsay

# EDITH COWAN UNIVERSITY JOONDALUP – NGOOLARK BUILDING

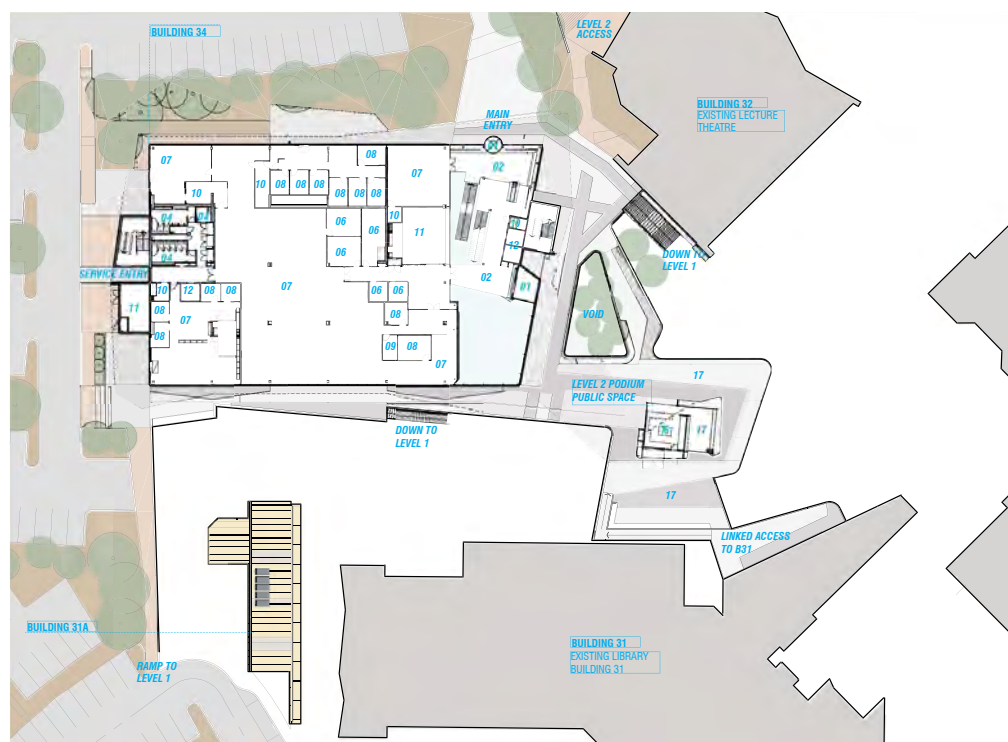
- LEGEND**
- B34**
- 01 AIRLOCK
  - 02 ATRIUM PUBLIC FOYER
  - 03 SEMINAR ROOM
  - 04 TOILET BLOCK
  - 05 PARENTS ROOM
  - 06 MEETING ROOM
  - 07 STAFF OPEN OPEN AREA
  - 08 OFFICES
  - 09 RECEPTION
  - 10 STORE
  - 11 STAFF AREA
  - 12 PLANT ROOM
  - 13 LIFTS
  - 14 POP UP SHOP
  - 15 PARKING
  - 16 CAFE KITCHEN
  - 17 CAFE SEATING
- B31**
- 01 CHANGE ROOM
  - 02 TOILET/SHOWER FACILITY
  - 03 STORE
  - 04 BIN STORE
  - 05 PLANT ROOM
  - 06 BIKE RACKS



**NGOOLARK STUDENT SERVICES**  
SITE PLAN LEVEL ONE



- LEGEND**
- B34**
- 01 AIRLOCK
  - 02 ATRIUM PUBLIC FOYER
  - 03 SEMINAR ROOM
  - 04 TOILET BLOCK
  - 05 PARENTS ROOM
  - 06 MEETING ROOM
  - 07 STAFF OPEN OPEN AREA
  - 08 OFFICES
  - 09 RECEPTION
  - 10 STORE
  - 11 STAFF AREA
  - 12 PLANT ROOM
  - 13 LIFTS
  - 14 POP UP SHOP
  - 15 PARKING
  - 16 CAFE KITCHEN
  - 17 CAFE SEATING
- B31**
- 01 CHANGE ROOM
  - 02 TOILET/SHOWER FACILITY
  - 03 STORE
  - 04 BIN STORE
  - 05 PLANT ROOM
  - 06 BIKE RACKS



**NGOOLARK STUDENT SERVICES**  
SITE PLAN LEVEL TWO

