

TRANS FORM ANCE

TRANSFORMING
THE LEARNING
LANDSCAPE

Learning Environments Australasia
19th Annual Conference

28-31 MAY 2019
Perth Convention
& Exhibition Centre
transformance.a4le.org.au



GOVERNOR STIRLING SENIOR HIGH SCHOOL 25 Third Avenue, Woodbridge

Architect: With_Architecture Studio

Building Contractor: Pindan

Educational and architectural ideas:

Governor Stirling SHS was the first full redevelopment of a high school constructed in a single stage in Western Australia. It involved demolition of the existing 50-year-old school and remediation of the site in preparation for the new school. The School's population was relocated during demolition and construction.

The 4.6 ha site is historically and culturally significant, adjacent the Swan River and part of WA's founding Governor's estate. Socially, the school has a strong indigenous population of 15%.

Maximising the relationship between building, river and surrounding context creates a sense of place; a 'Riverine' experience capitalising on the benefits of the natural setting. The design aims to engender a sense of school community pride and ownership, creating a distinctive presence and strong identity.

The design is an inventive response to the School's brief and an embodiment of the vision; 'Imagine, Create, Achieve', providing an adaptable facility that caters for the current education program and needs of students, staff and management.

On completion, the School Council Chairman expressed his pleasure, commenting... "The maximising of room and flow of the buildings, within the tight ratios of student numbers to area allowed, is quite remarkable. Common area spaces are easily utilised for learning or functions, such as this week's art exhibition... The teaching & learning aspects of the school have made a remarkable rebound too. The student numbers are well up, the attendance rates have sky rocketed and academic outcomes have shown great improvement. Improvement in staff morale and culture has been a pleasure to witness."

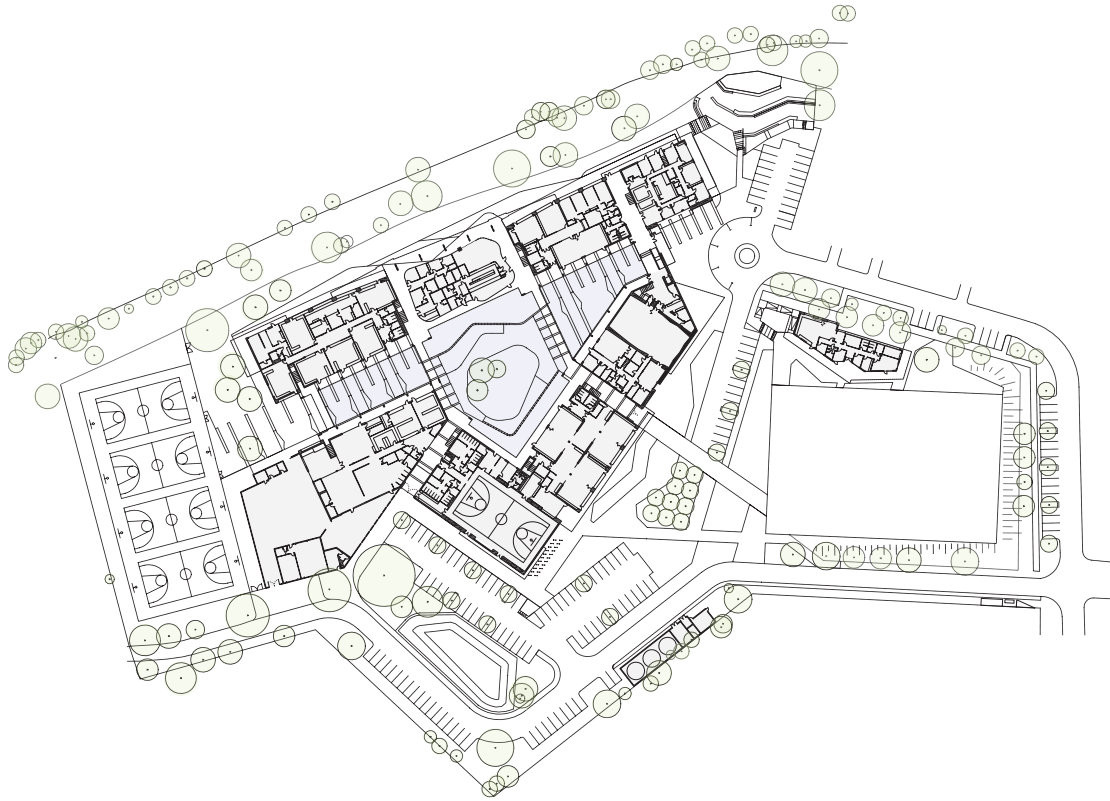


Photographer: Joel Barbitta D-Max Photography

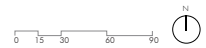
FACTS / FIGURES:

Gross Floor Area	13,553m ²
Final Contract Sum	\$47.8m (ex GST)
Cost per m²	\$2,959/m ² (ex GST)
Building Completion	February 2013

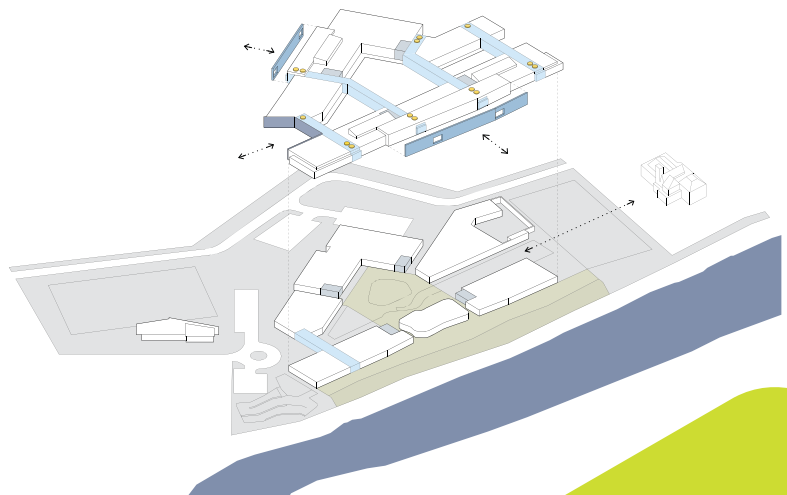
GOVERNOR STIRLING SENIOR HIGH SCHOOL



Site Plan



First Floor Plan



Axonometric Diagram