

TRANS FORM ANCE

TRANSFORMING
THE LEARNING
LANDSCAPE

Learning Environments Australasia
19th Annual Conference

28-31 MAY 2019
Perth Convention
& Exhibition Centre
transformance.a4le.org.au



MUNDARING CHRISTIAN COLLEGE 125 McDowell Loop, Parkerville

Architect: Taylor Robinson Chaney Broderick

Building Contractor: Universal Constructions

Educational and architectural ideas:

Mundaring Christian College is a new four stream secondary school located on a beautiful heavily forested site with glorious views of the hills to the east.

This gave unique opportunity to create a space that would reflect our values as a Christian College and our intention to prepare students for an education that equips them for an unfolding future, rather than a predictable past.

The first stage was a specialist area. The design of central hubs, with learning spaces on each side where everyone is visible created a sense of community and inspiration in learning. This building flows from quieter areas, to areas that are more robust for practical applications and are organised to reflect synergies between learning areas. The building has been designed to be fluid in use, collaborative in teaching and learning practice, and to reflect future work and learning spaces.

The second stage was specifically designed for humanities and reflects the opportunities the College wants to provide students. Traditionally, students are streamed when they move to secondary school.

This has multiple negative effects on student learning and expectation. The spaces are large enough for the year cohort to learn together as we want all students to access the same curriculum opportunities. Assessment is to see where students stand in order to lift them, rather than as a judgement of expectations for their future. This equips students with hope and a growth mindset.

These buildings “work” and have helped to create the unique atmosphere of our college; a positive atmosphere and mutual respect and engaged learning.

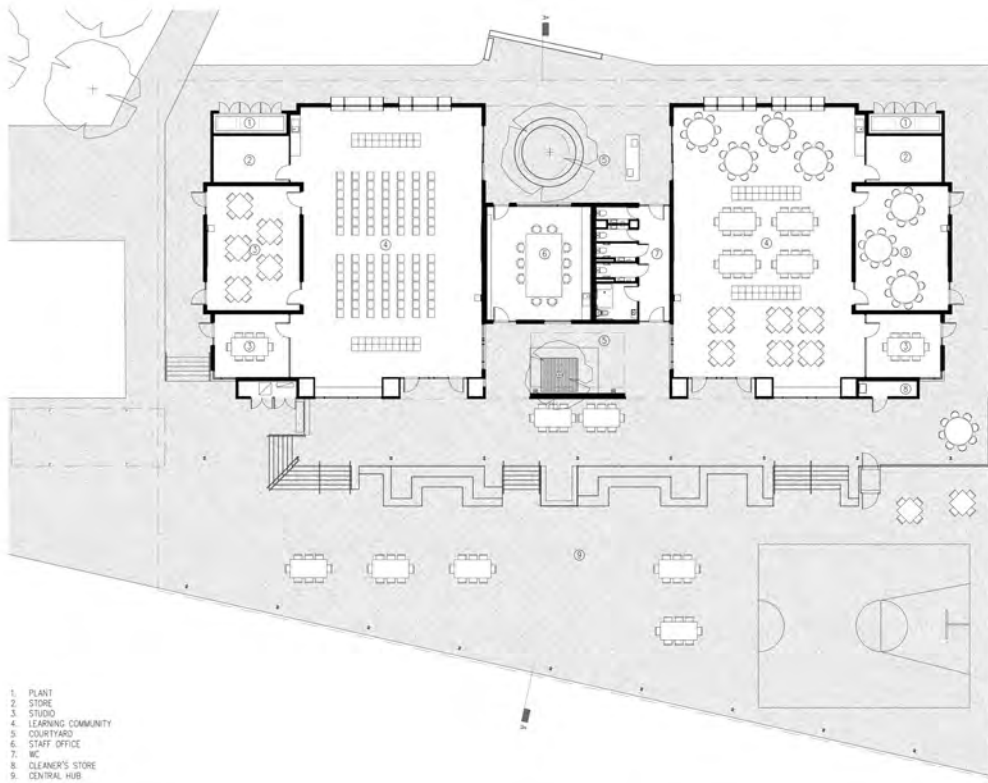


Photographer:
Andrew
Pritchard

FACTS / FIGURES:

Gross Floor Area	3,516m ²
Final Contract Sum	\$10.8m (ex GST)
Building Completion	January 2018

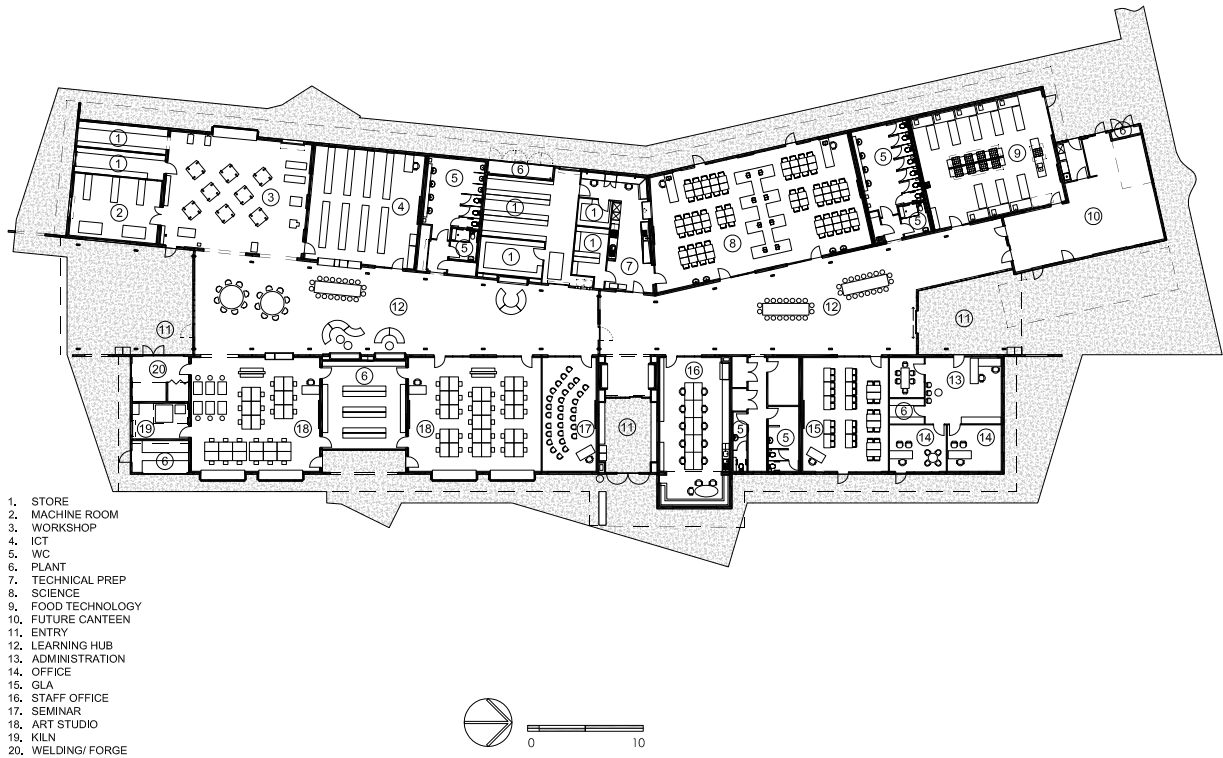
MUNDARING CHRISTIAN COLLEGE



Mundaring Christian College Parkville Stage 2
Ground Floor Plan
Presentation Drawings

A2.00
18/10/18

1:100 @ A1
18055



1. STORE
2. MACHINE ROOM
3. WORKSHOP
4. ICT
5. WC
6. PLANT
7. TECHNICAL PREP
8. SCIENCE
9. FOOD TECHNOLOGY
10. FUTURE CANTEN
11. ENTRY
12. LEARNING HUB
13. ADMINISTRATION
14. OFFICE
15. GLA
16. STAFF OFFICE
17. SEMINAR
18. ART STUDIO
19. KILN
20. WELDING/ FORGE