

TRANS FORM ANCE

TRANSFORMING
THE LEARNING
LANDSCAPE

Learning Environments Australasia
19th Annual Conference

28-31 MAY 2019
Perth Convention
& Exhibition Centre
transformance.a4le.org.au



GUILDFORD GRAMMAR SCHOOL 11 Terrace Road, Guildford

Architect: CHRISTOU Design Group

Building Contractor: Firm Constructions

Educational and architectural ideas:

The design was approached from the base principle of holistic learning and blurring lines between what are considered traditional learning spaces with those which provide flexibility, encourage exploration and connect the learners to the natural landscape which surrounds the campus.

A collection of three new two-storey buildings for Years 1 – 6 designed to promote fun, play and exploration. Each building is structured around a visually transparent and physically permeable central street – that provides vertical and horizontal connections between the interior learning spaces as well as places for kinesthetic learning, movement and play.

The desire for linked learning spaces and the incorporation of play throughout the project, created high levels of transparency and permeability; allowing the classrooms to connect to each other, to breakout spaces, and to the

external environment. Courtyards play a major role in the project and allow a dialogue with the site, the landscape and learning. These spaces will also evolve over time to suit programming, student play and breakout requirements.

The intent of the master plan to create a connected learning landscape is evident in the relationship between the three buildings, direct access between indoor and outdoor spaces, and purposefully designed outdoor settings that invite active play with water and sand.

The spatial opportunities created inside these buildings and the exterior spaces they help define are designed to free children and teachers from the limitations of four walls and provoke them to ask “what if... what next?” in a connected learning environment.

FACTS / FIGURES:

Gross Floor Area	4,400m ²
Final Contract Sum	\$21.4m (ex GST)
Cost per m²	\$2,840/m ² (ex GST)
Building Completion	September 2015



Photographer: Douglas Mark Black

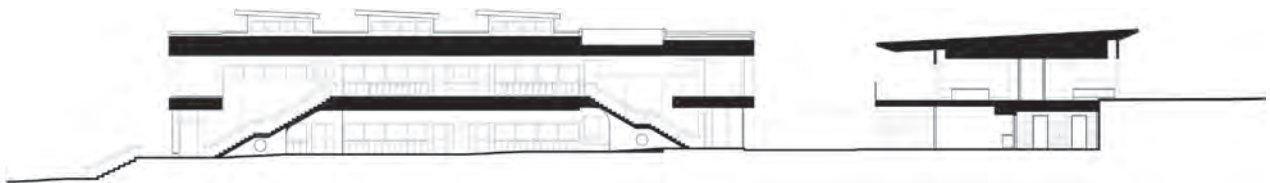
Tour sponsored by:



GUILDFORD GRAMMAR SCHOOL



GROUND  10000 



SECTION BB  0 1 2 3 4 5 10