

# TRANS FORM ANCE

TRANSFORMING  
THE LEARNING  
LANDSCAPE

Learning Environments Australasia  
19th Annual Conference

28-31 MAY 2019

Perth Convention  
& Exhibition Centre

[transformance.a4le.org.au](http://transformance.a4le.org.au)



## PLC – LIGHTHOUSE WELLBEING CENTRE McNeil Street, Peppermint Grove

**Architect:** MCDF Architects

**Building Contractor:** Perkins TPD

### Educational and architectural ideas:

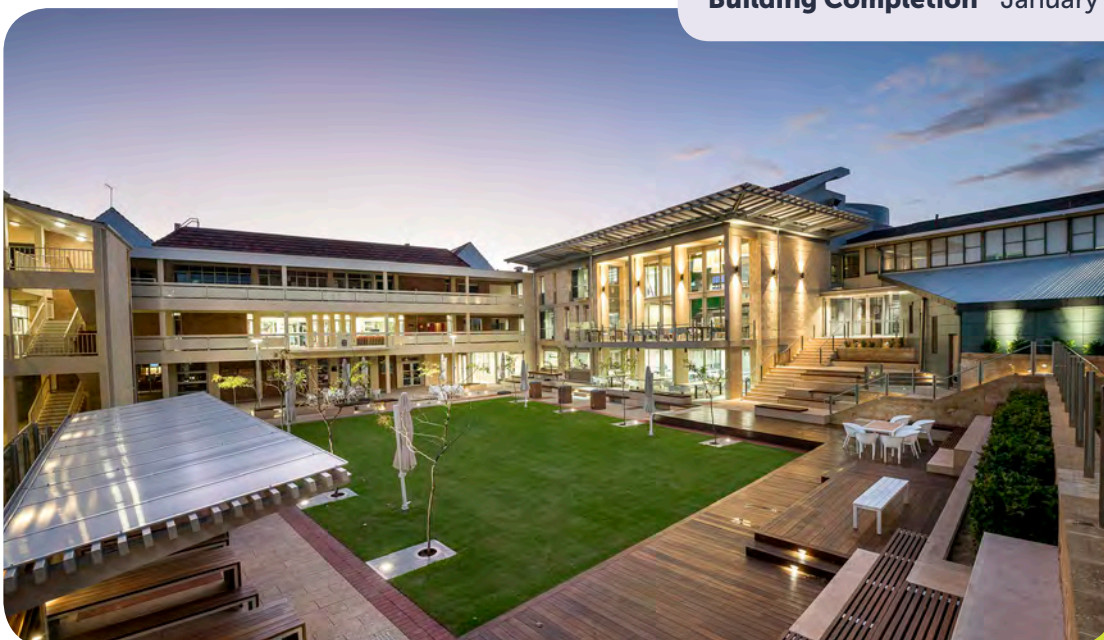
Presbyterian Ladies' College (PLC) is the first Western Australian school to construct a dedicated health and wellbeing centre (the PLC 'Lighthouse') to facilitate programs aimed at preventing mental illness and promoting mental health. The state-of-the-art facility enables staff to deliver a comprehensive, developmentally appropriate,

evidence-based PK-12 wellbeing curriculum that integrates wellbeing within teacher methods and practise. The building is designed to reflect the multifaceted nature of wellbeing, with flexible internal spaces including a resource library, contemporary fitness areas, recharge, expressive arts, meditation and workshop rooms, food room, healthy café and rooftop garden.



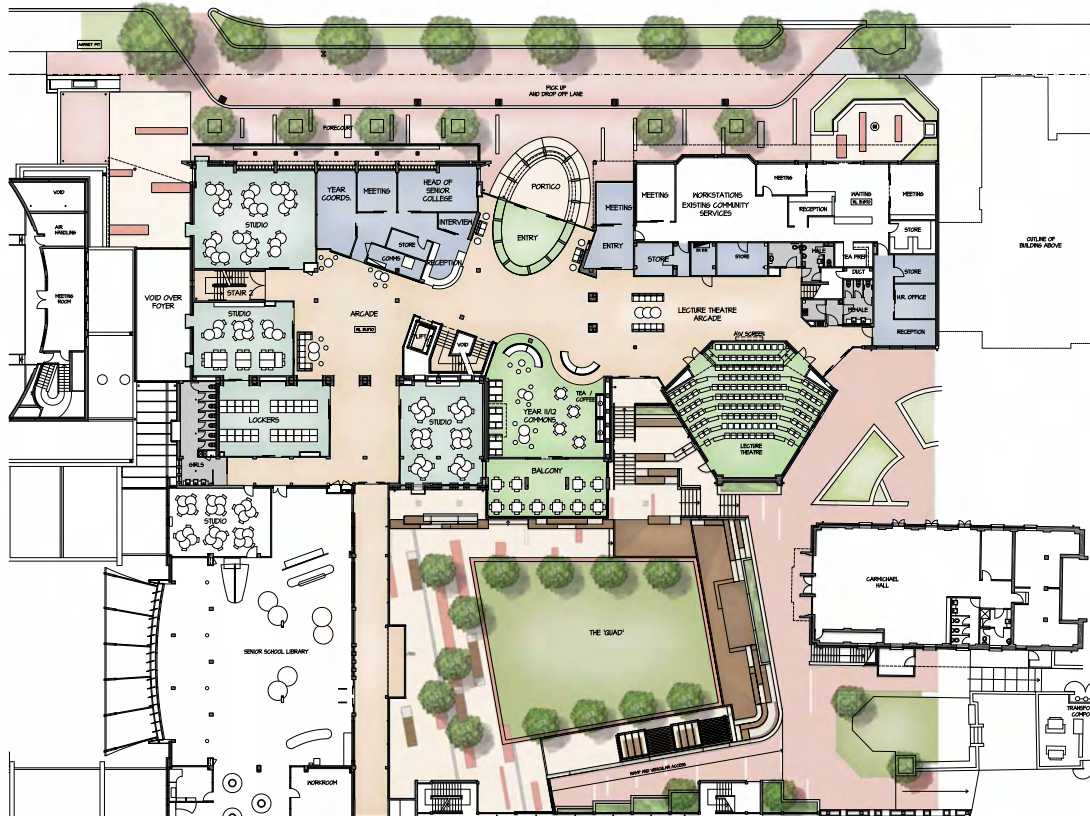
### FACTS / FIGURES:

<b>Gross Floor Area</b>	2,000m <sup>2</sup>
<b>Final Contract Sum</b>	\$9m (ex GST)
<b>Cost per m<sup>2</sup></b>	\$3,000/m <sup>2</sup> (ex GST)
<b>Building Completion</b>	January 2018

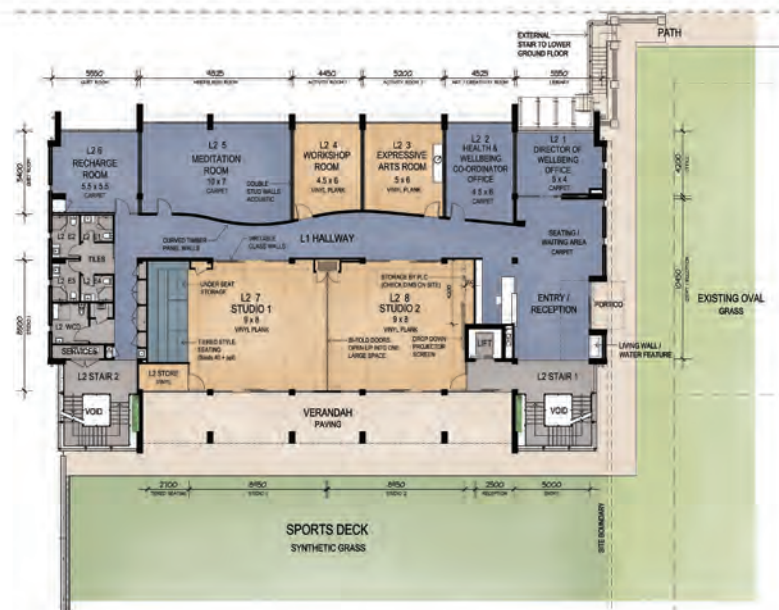


**Photographer:** Neal Pritchard Commercial Photography

# PLC – LIGHTHOUSE WELLBEING CENTRE



L3 - Middle Level Plan - 1:200@A2  
**PRESBYTERIAN LADIES' COLLEGE**  
 BETH BLACKWOOD SENIOR SCHOOL AND QUAD



LEVEL 2 - FLOOR PLAN  
 1:200 @ A3  
**PRESBYTERIAN LADIES' COLLEGE**  
 PROPOSED WELLNESS CENTRE

