

# TRANS FORM ANCE

TRANSFORMING  
THE LEARNING  
LANDSCAPE

Learning Environments Australasia  
19th Annual Conference

28-31 MAY 2019  
Perth Convention  
& Exhibition Centre  
[transformance.a4le.org.au](http://transformance.a4le.org.au)



## SANTA MARIA COLLEGE – CONSILII CENTRE 18 Stoneham Road, Attadale

**Architect:** EIW Architects

**Building Contractor:** Emco Building

### Educational and architectural ideas:

The Consilii Centre at Santa Maria College is a new four-storey science and humanities building, creating a contemporary link between the new and heritage buildings on site.

EIW Architects undertook extension workshops with the Science and Humanities staff who were to occupy the new building. This process began with exploring other innovative science learning spaces, both in Perth and further afield. The school's input was vital to designing the facilities, particularly in terms of specific science requirements. Each of the laboratory spaces in the building are designed as specialist laboratories and staff feedback led the design of each.

The built form adjoins the existing Mercy Building to create accessible floor plates, and opens the site for pedestrian access to the school from the boarding houses. The curved façade relates to the recent Mercy Building extension, and is designed to capture the expansive views of the Swan River and Perth city beyond.

The Humanities classes on the Ground Floor link together via a shared plaza space and include flexibility so that classes can share spaces and combine their learning activities. The science facilities are spread over two floors, with the First Floor incorporating three studios around a shared multi-use laboratory for multiple classes.

The Second Floor includes six dedicated Physics, Chemistry, Biology and Human Biology laboratories with unique features related to the specific learning areas such as access to a greenhouse and open balcony for the Biology classroom. Interior glazing and displays between laboratories and public areas means the science is always on display, and relatable back to everyday life.

### FACTS / FIGURES:

<b>Gross Floor Area</b>	2,460m <sup>2</sup>
<b>Final Contract Sum</b>	\$8.3m (ex GST)
<b>Cost per m<sup>2</sup></b>	\$3,300/m <sup>2</sup> (ex GST)
<b>Building Completion</b>	August 2015

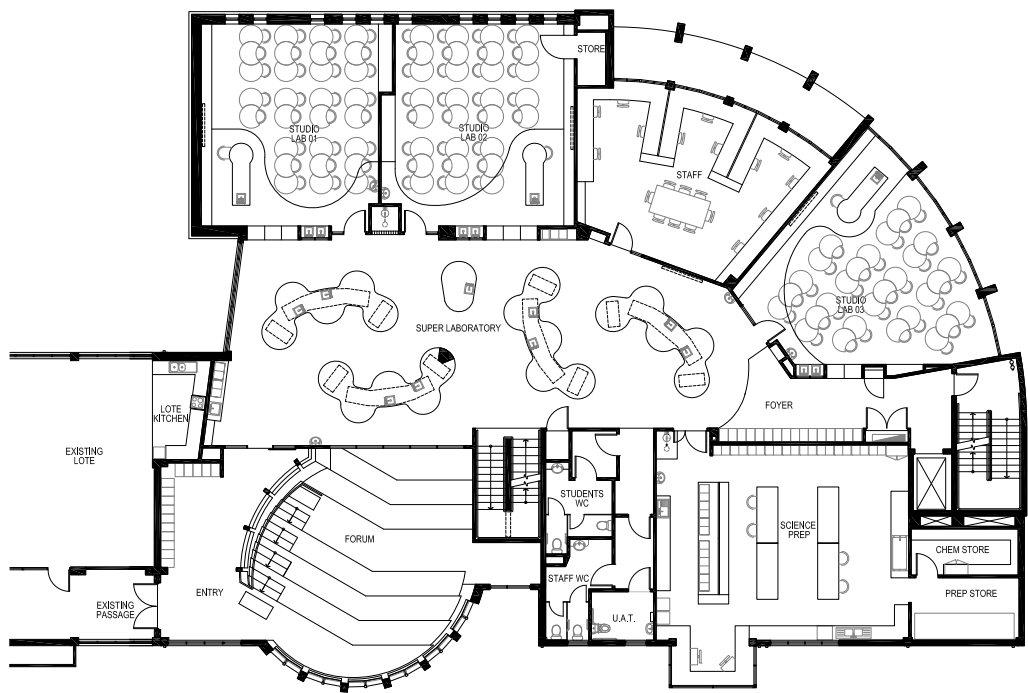


**Photographer:** Andrew Pritchard Photography

Tour sponsored by:

**Armstrong**  
FLOORING

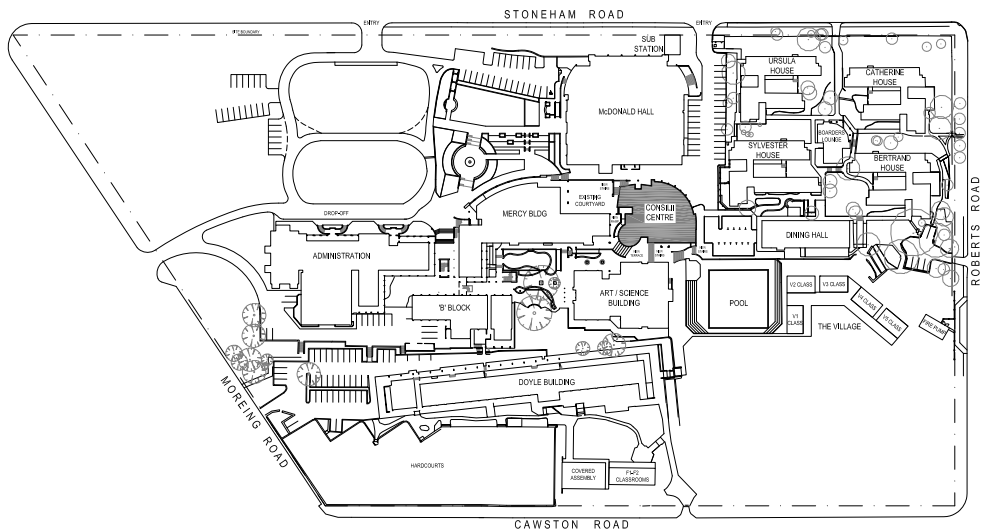
# SANTA MARIA COLLEGE – CONSILII CENTRE



FIRST FLOOR PLAN

SCALE: 1:2000@A4 0 1 2 10m

SANTA MARIA COLLEGE CONSILII CENTRE



SITE PLAN

SCALE: 1:2000@A4 0 10 20 100m

SANTA MARIA COLLEGE CONSILII CENTRE