

TRANS FORM ANCE

TRANSFORMING
THE LEARNING
LANDSCAPE

Learning Environments Australasia
19th Annual Conference

28-31 MAY 2019
Perth Convention
& Exhibition Centre
transformance.a4le.org.au



HALE JUNIOR SCHOOL Glenelg Avenue, Wembley Downs

Architect: Site Architecture Studio

Building Contractor: EMCO Building

Educational and architectural ideas:

The project consists of 5 new buildings built within the existing Junior School site area and consideration of the retained/existing gymnasium, library, and Arts Building. The buildings consist of a lower, middle and senior junior school learning hubs, a new Administration Building and a new Resource Centre which are sited within the existing Arcadian landscape synonymous with Hale School.

The master plan is drawn from the existing landscape and the site analysis which establishes a processional connection from the administration entry of the school through a new early learning and Pre-Primary Hub, 2 streams Middle and 3 stream Upper Junior primary learning environments to the senior campus. The historical junior school courtyard has been reinterpreted into a new campus green defined by a continuous curved colonnade. Each learning hub consists of a cluster of General Learning spaces, adjoining a voluminous multi-purpose break-out space reminiscent of a market hall, which has technologies to allow each space to act as

classroom, group-work space or peer-to-peer learning hub around the curricular concept of Prepare, Teach, Connect.

The design concept provides a strengthened relationship between learning and landscape, to the extent of creating seamless transitions between internal and external teaching spaces and creating passive and active outdoor learning environments around formal and informal landscapes that support and encourage boy responsive education.

The architecture takes cues from the brick history of the school by literally creating foundations from which new journeys and pathways emerge, referenced through the use of patterned and articulated brickwork. This important connection with the past is metaphorically strengthened through a concrete mural depicting Hale Junior Boys both past and present. Although the buildings have changed, the traditional values and foundation of the school remain.



Photographer: Dion Robeson

FACTS / FIGURES:

Gross Floor Area	5,540m ²
Final Contract Sum	\$13.5m (ex GST)
Cost per m²	\$1,850/m ² (ex GST)
Building Completion	September 2018

HALE JUNIOR SCHOOL

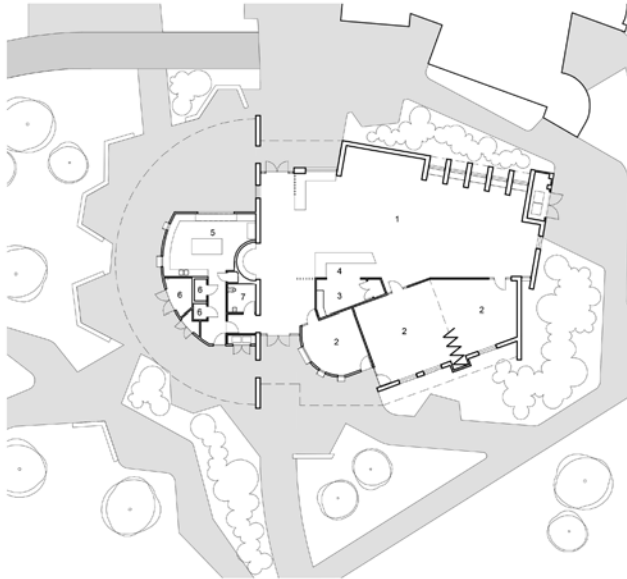


- 1 FOYER
- 2 RECEPTION
- 3 MEETING
- 4 WORK ROOM
- 5 STAFF ROOM
- 6 PRINCIPALS OFFICE
- 7 DEPUTY'S OFFICE
- 8 OFFICE
- 9 SICK BAY
- 10 FUNCTION
- 11 FEMALE
- 12 MALE
- 13 UAT
- 14 STORE



0 1 2 3 4 5 10

HALE JUNIOR SCHOOL
ADMINISTRATION BUILDING

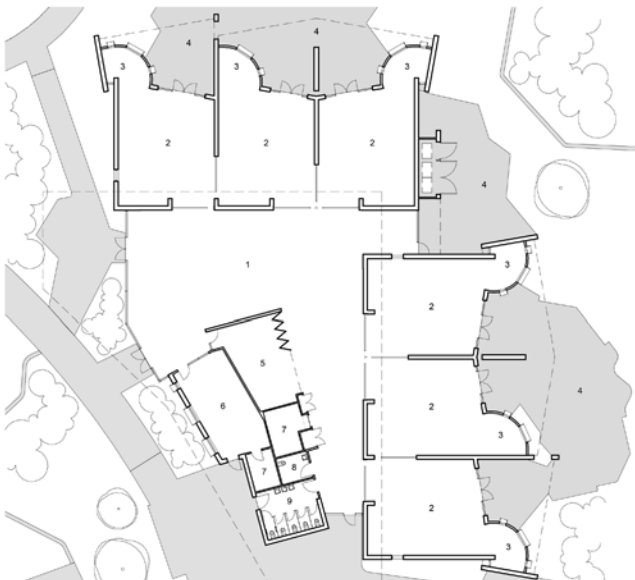


- 1 RESOURCE HUB
- 2 SEMINAR ROOM
- 3 WORK ROOM
- 4 RECEPTION COUNTER
- 5 CANTINE
- 6 STORE
- 7 UAT



0 1 2 3 4 5 10

HALE JUNIOR SCHOOL
RESOURCE HUB



- 1 BREAK-OUT SPACE
- 2 CLASSROOM
- 3 READING NOOK
- 4 OUTDOOR LEARNING AREA
- 5 MULTI-PURPOSE SPACE
- 6 STAFF PREP ROOM
- 7 STORE
- 8 UAT
- 9 STUDENT TOILETS



0 1 2 3 4 5 10

HALE JUNIOR SCHOOL
TYPICAL LEARNING POD

