

TRANS FORM ANCE

TRANSFORMING
THE LEARNING
LANDSCAPE

Learning Environments Australasia
19th Annual Conference

28-31 MAY 2019
Perth Convention
& Exhibition Centre
transformance.a4le.org.au



METHODIST LADIES COLLEGE (MLC) JUNIOR YEARS PROJECT 356 Stirling Hwy, Claremont

Architect: CODA Studio

Building Contractor:

Educational and architectural ideas:

CODA designed a new learning environment for the Junior Years at Methodist Ladies College in Claremont, Australia.

The new Junior Years project at Methodist Ladies College clearly marks a significant shift in the types of spaces that have value in the contemporary learning environment.

Located on a steeply sloping site the project includes the refurbishment of a heritage building, the refurbishment of a 1980's classroom building and a new build, each with differing floor levels. This challenge was used to the project advantage through the integration of a large nature playground within the protected heart of the school.

Classrooms actively engage with this space allowing it to double as a teaching space and ensuring that accessibility is integrated into the fabric of the scheme.

Externally a palette of robust materials have been used alongside the fluted external screen that binds the new and old buildings together. This unifying element provides significant relief to the western sun and creates new, engaging external teaching spaces.

FACTS / FIGURES:

Gross Floor Area 1500m² approx
Building Completion November 2017

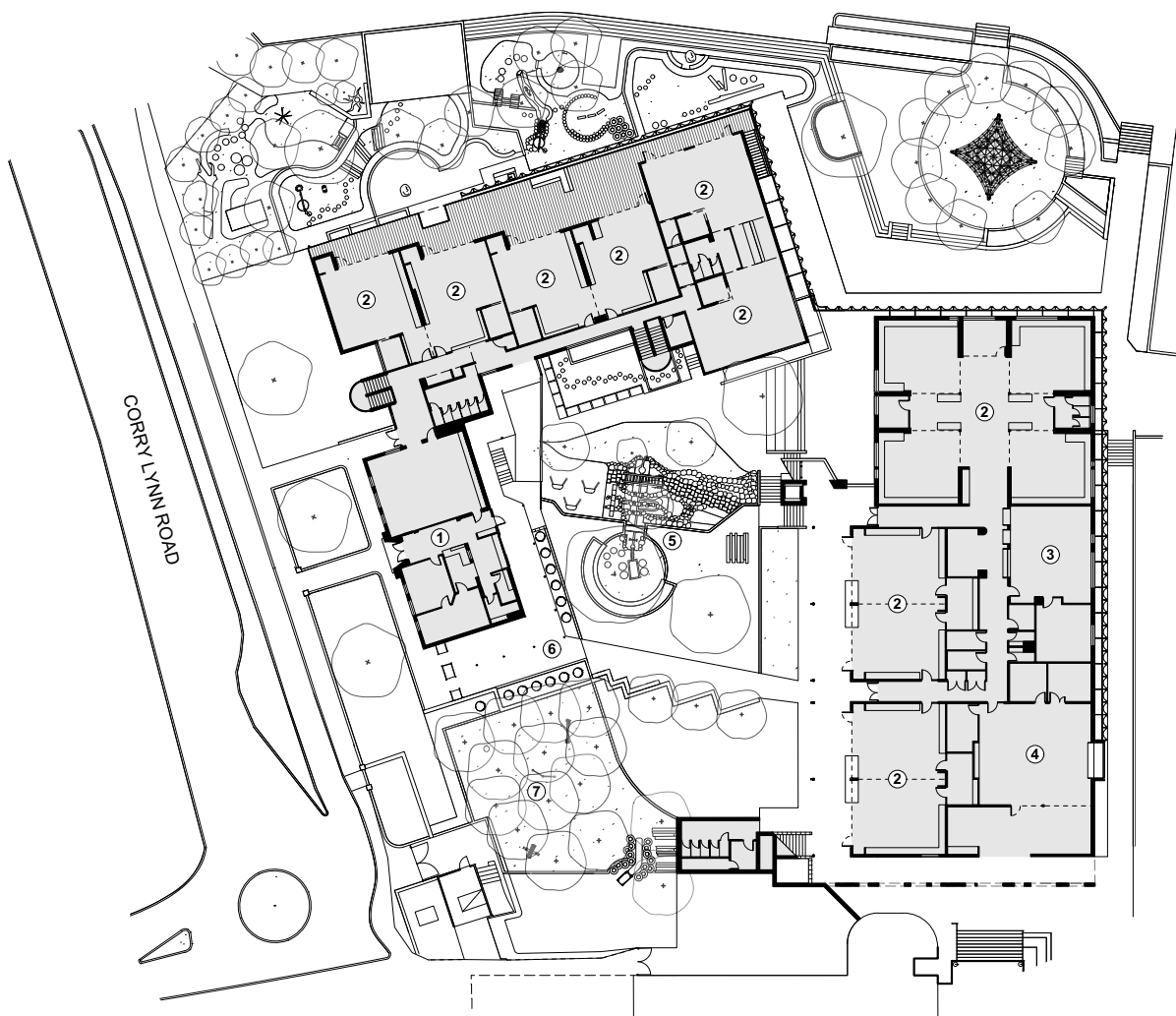


Photographer: Peter Bennetts

Tour sponsored by:



MLC JUNIOR YEARS PROJECT



- 1. ADMINISTRATION
- 2. CLASSROOMS
- 3. STAFF SPACE
- 4. CREATIVE SPACE
- 5. LANDSCAPE - RIVER
- 6. LANDSCAPE - ORCHARD
- 7. LANDSCAPE - FOREST

0 20 M

