

TRANS FORM ANCE

TRANSFORMING
THE LEARNING
LANDSCAPE

Learning Environments Australasia
19th Annual Conference

28-31 MAY 2019
Perth Convention
& Exhibition Centre
transformance.a4le.org.au



INGLEWOOD PRIMARY SCHOOL – CLASSROOM BLOCK 24 Normanby Road, Inglewood

Architect: Hodge Collard Preston Architects

Building Contractor: McCorkell Constructions WA

Educational and architectural ideas:

As part of the Inner City Schools Program, Inglewood Primary School received a new 2-storey teaching block comprised of 6 flexible classrooms with associated activity and collegiate spaces to satisfy the requirements of a growing local community. The compact and densely covered site called for a bespoke design to ensure the schools oval and play spaces were optimised while referencing the mix of both 1940's and contemporary buildings at the school.

While the external aesthetic aims to sit within and embrace connection to the surrounding residential vernacular, the internal verandas and classrooms have been designed to be light, contemporary and fun for the young occupants.

All classrooms have aspects to the playing fields and tree lined streets and the verandahs provide an area to support school sports or a place to sit and collaborate.

Being restricted by a linear footprint, flexibility has been established through interconnected classrooms and direct access to the main school while still creating an identity for the senior year groups in their own space – an important part of the transition from primary school to high school.

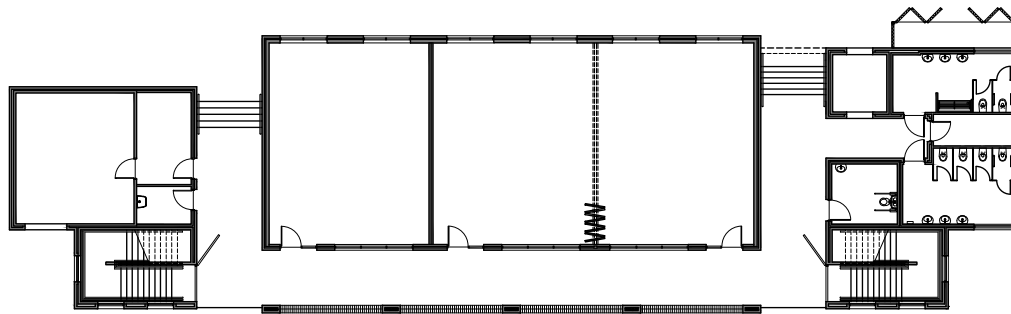
FACTS / FIGURES:

Gross Floor Area	960m ²
Final Contract Sum	\$2.16m (ex GST)
Cost per m²	\$2,323/m ²
Building Completion	April 2018

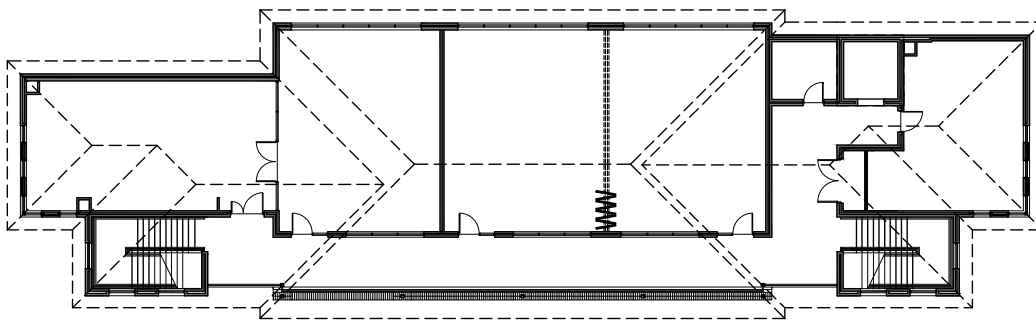


Photographer: Dion Robeson

INGLEWOOD PRIMARY SCHOOL – CLASSROOM BLOCK



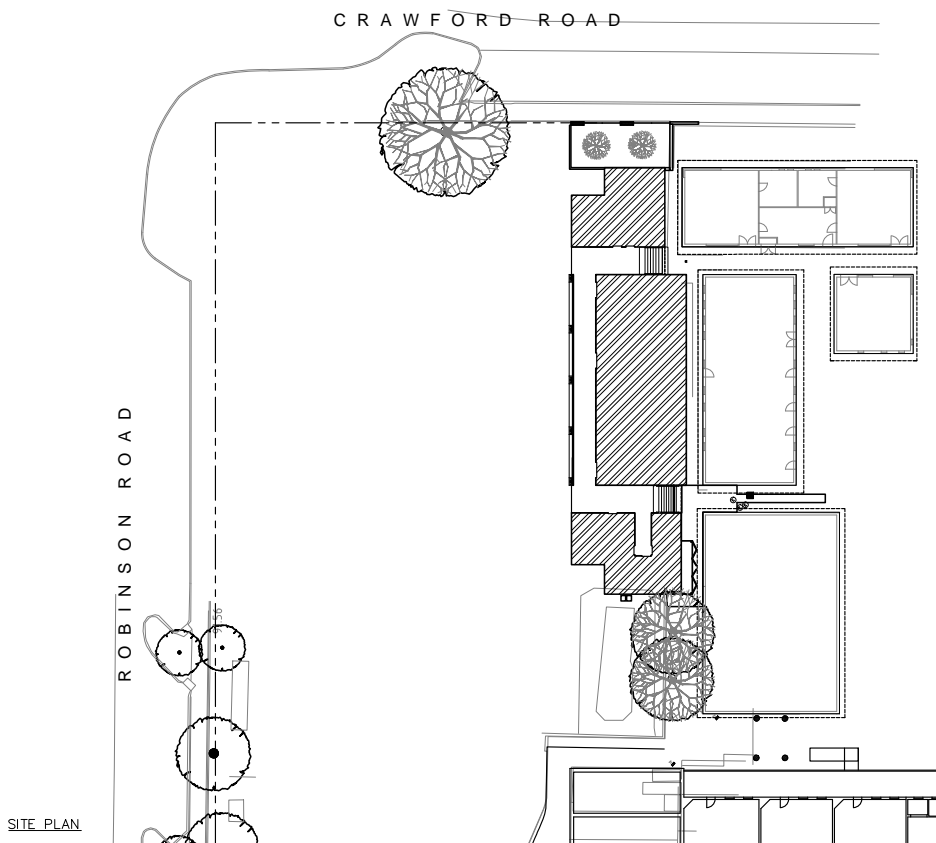
GROUND FLOOR PLAN



FIRST FLOOR PLAN



SCALE
0 1 2 5 10m



SITE PLAN

SCALE
0 2 5 10 20m