

# TRANS FORM ANCE

TRANSFORMING  
THE LEARNING  
LANDSCAPE

Learning Environments Australasia  
19th Annual Conference

28-31 MAY 2019  
Perth Convention  
& Exhibition Centre  
[transformance.a4le.org.au](http://transformance.a4le.org.au)



## ST GEORGE'S ANGLICAN GRAMMAR SCHOOL 50 William Street, Perth

**Architect:** DWA Architects

**Building Contractor:** Buckingham  
Re-Development Co.

### Educational and architectural ideas:

St George's Anglican Grammar School (SGAGS) opened in the heart of the Perth CBD in 2015 to be Perth's first vertical school. SGAGS uses bold colours and innovative design, literally incorporating the city's cultural, educational and recreational facilities as part of their greater urban campus.

The Founding Principal reports the design has exceeded expectations, being a spacious learning environment that is exciting, dynamic and fit for purpose. The layout is very flexible and provides both larger and smaller teaching spaces, with maximum visibility so that students can work unsupervised.

The teachers appreciate the panoramic view across the city to the Swan River. The large classrooms provide a flexible working environment for different configurations and learning styles. They find SGAGS a school where there is colour, light, transparency and sharing, where wide corridors and lobbies make for ease of movement between

classes. The students love the building, especially the breakout, colour-saturated student areas. They use the many different spaces to work in groups or independently and it is easy to move between classes. The school is modern and feels like a sophisticated environment.

The rectangular office building was split into layers incorporating an invigorating colour palette to assist with way-finding. Reconfigurable student-friendly breakout areas were strategically placed on each floor, allowing light to diffuse and filter across all spaces. The interior design focused on flexible, high impact, low cost solutions. The transformation of the rooftop into a recreation deck provides valuable recreational amenity. The project was delivered in an extremely tight time frame and limited budget.

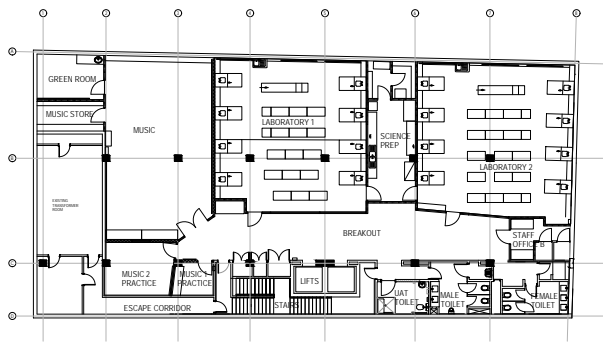
### FACTS / FIGURES:

<b>Gross Floor Area</b>	3025m <sup>2</sup>
<b>Final Contract Sum</b>	\$3.5m (ex GST)
<b>Cost per m<sup>2</sup></b>	\$1,157/m <sup>2</sup>
<b>Building Completion</b>	July 2015

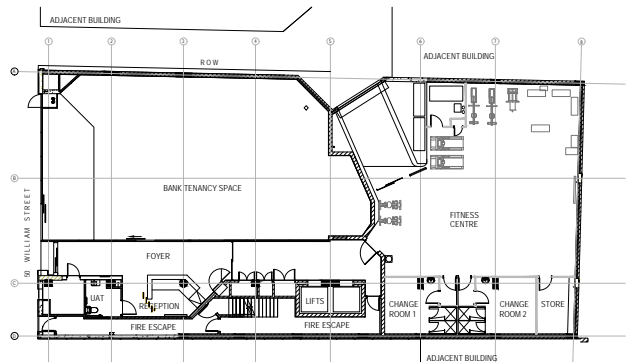


**Photographer:** JD Photography

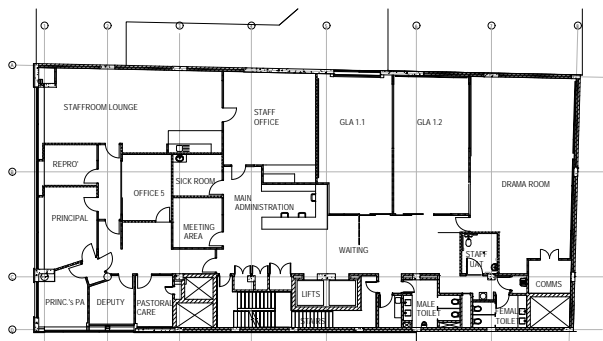
# ST GEORGE'S ANGLICAN GRAMMAR SCHOOL



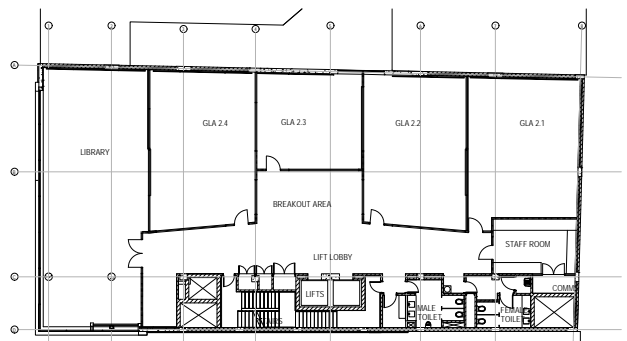
BASEMENT FLOOR PLAN (MUSIC & SCIENCE)



GROUND FLOOR PLAN (RECEPTION)



FIRST FLOOR PLAN (ADMINISTRATION)

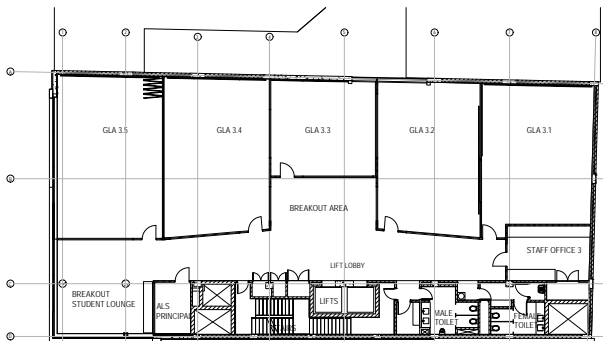


SECOND FLOOR PLAN (GLA's)

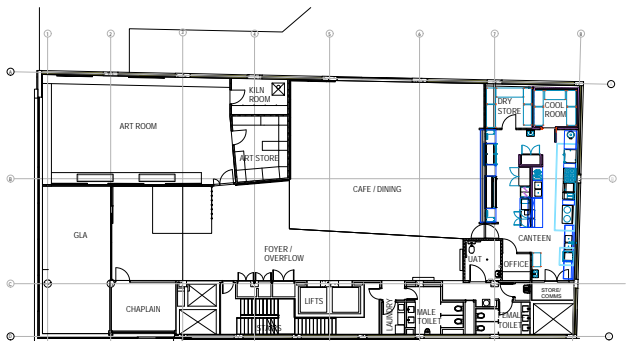


BASEMENT, GROUND, FIRST, SECOND FLOOR PLANS

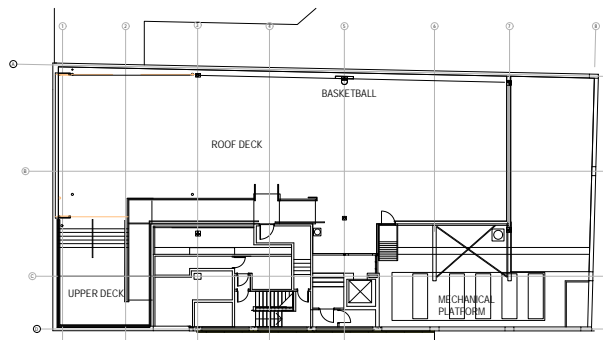
SCALE 1:300 @ A4



THIRD FLOOR PLAN (GLA's)



FOURTH FLOOR PLAN (LIBRARY, ART, CANTEN)



ROOF FLOOR PLAN (RECREATION DECK)



THIRD, FOURTH & ROOF FLOOR PLANS

SCALE 1:300 @ A4

