



Equity and Access: unlocking the keys to viral hepatitis elimination

# Key elements of services responding to cultural diversity

Natali Smud | Senior Health Promotion Officer  
Multicultural HIV and Hepatitis Service (MHAHS)  
Diversity Programs and Strategy Hub  
Population Health | Sydney Local Health District



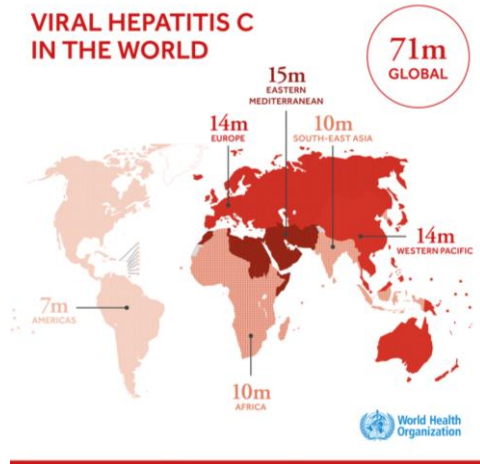
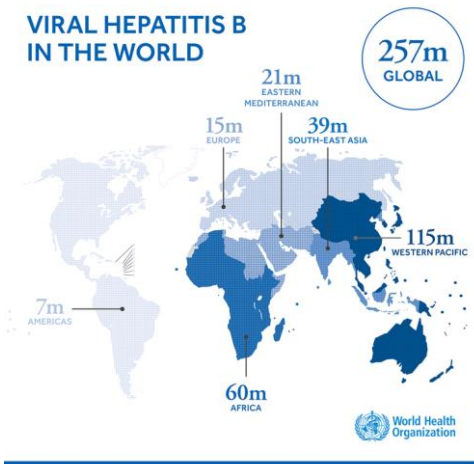
[www.mhahs.org.au](http://www.mhahs.org.au)



TheMHAHS



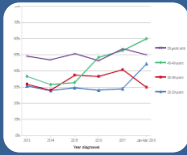
## Viral hepatitis elimination | global perspective





## CALD | Priority populations

*Reactive*



### National & local notification data

- Hepatitis B: COB quant / qual data sources
- Hepatitis C: - - - ?

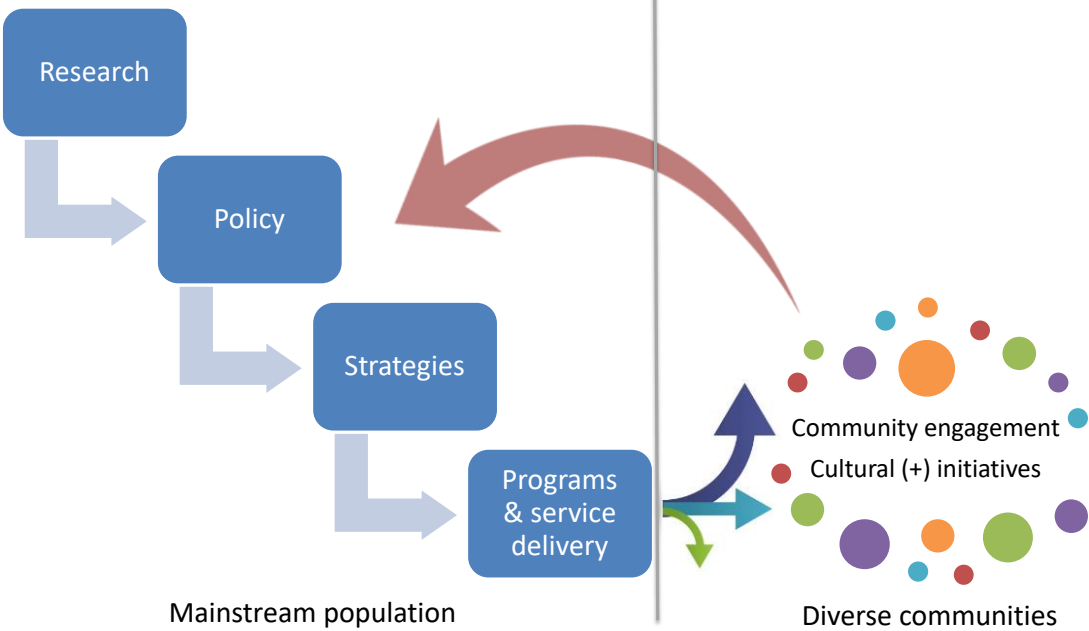
*Proactive*



### Global and regional prevalence



### Migration patterns & mobility





## Reconstruct the Australian systematic response to achieve viral hepatitis elimination

- Australia is a diverse community
  - ➔ Addressing diversity as an 'add-on' has proven unsuccessful
- Incorporate migration and mobility in projections; cross-reference a range of sources for a proactive needs assessment.
- Understanding of diverse cultural and social experiences of viral hepatitis must be included in policy and strategies development, for sustainable programs and services delivery.

**[Nothing about us, without us]**



[www.mhahs.org.au](http://www.mhahs.org.au)



TheMHAHS