



Costing harm from others' drinking in Australia in 2021

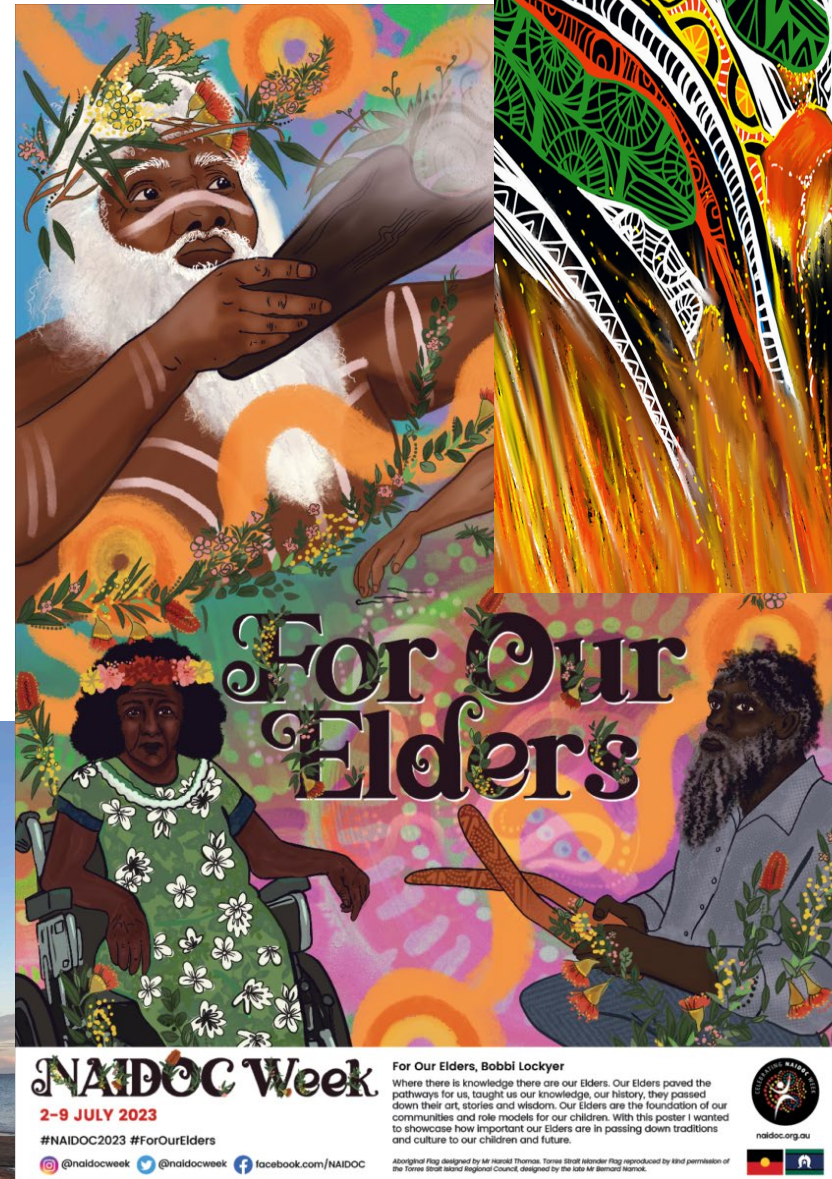
Anne-Marie Laslett

Anne-Marie Laslett, Koen Smit, Dan Anderson-Luxford, Jade Rintala, Breana Willoughby, Yvette Mojica-Perez, Robin Room, Heng Jiang

Australian Professional Society on Alcohol and Drugs (APSAD)
Annual conference
30 October – 1 November 2024
Canberra, Australia

Acknowledgment of Country

I would like to begin by acknowledging the Traditional Owners of the land on which we meet today, the Ngunnawal (Nun-a-wol) people as well as the owners of the Wurrundjeri Woi Wurrong and Bunerong people of the Kulin nation – the lands I work on. I'd like to pay my respects to elders past and present and extend that respect to any Aboriginal and Torres Strait Islander people in the audience today.



Support and conflict of interest statement

- No conflicts of interest to declare

Background and aim

Alcohol's harm to others (**AHTO**) affects

- Individuals
- Families
- Communities
- Societies

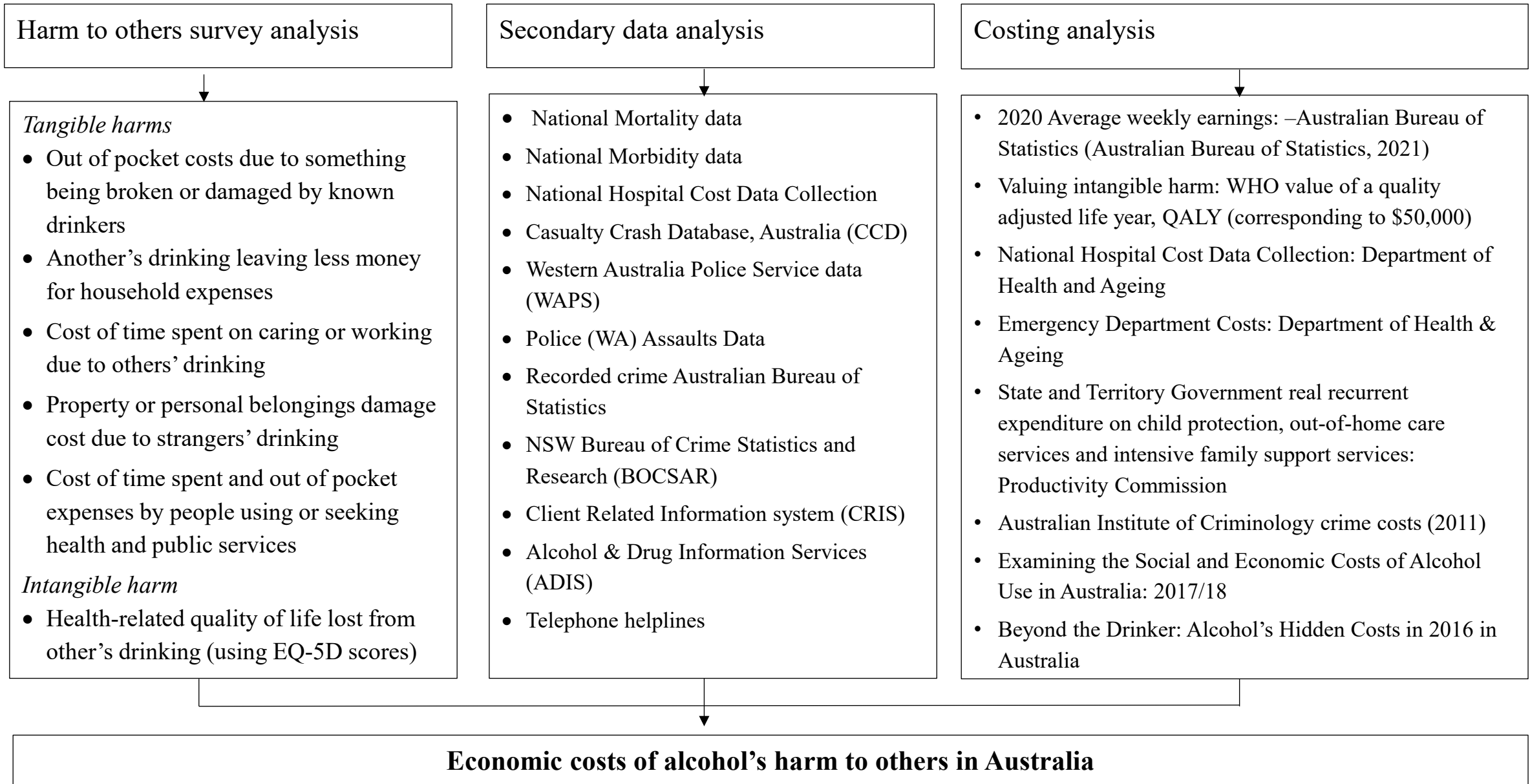
We aim to produce a comprehensive new cost estimate of harms from others' drinking in Australia in 2021.

Method – cost of illness

- The study applied a standard cost method (cost of illness and societal costing) for costing different aspects of AHTO. This costing method was specified in the *International Guidelines for Estimating the Costs of Substance Abuse, Second Edition* (Single et al., 2003)
- In brief, this approach estimates the proportion of national costs for various services or activities that can reasonably be attributed to the alcohol use of others, including but not limited to
 - health care and social services
 - crime costs
 - costs of productivity loss
 - informal caregiving
 - loss of quality of life
 - out-of-pocket expenses and property damage

In this presentation, some cost estimates are presented.

Study workflow for estimating the economic costs of alcohol's harm to others



1. Prevalence of AHTO

	Total % (95% CI)
	N=2574
Negatively affected by drinking of:	
Household member	4.7 (3.8, 5.9)
Relative or intimate (not in household)	10.7 (9.3, 12.3)
Friend	7.1 (5.9, 8.5)
Co-worker	2.9 (2.1, 3.9)
Known individuals:	
Household member, relative, intimate, friend, co-worker, other	21.8 (19.8, 23.9)
Including strangers:	48.1 (45.6, 50.6)

Laslett, et al. 2023

2. Alcohol-related harms to children

Variable	n	Weighted %
Harmed in any way (854)	146	15.70%
Harm type specified		
Unsupervised/unsafe situation	19	2.55%
Verbal abuse	52	5.98%
Physically hurt	8	1.01%
Witness serious violence	17	2.23%
Child protection called	7	0.58%
Financially harmed	36	4.12%
Any harm type specified (854)	88	10.10%

From: Hopkins, C., et al. (In press in Addiction) Harm to children from others' drinking: A survey of caregivers in Australia.

3. Caring for others because of their drinking

Total sample N=2574	Yes (N)	Weighted %
Caring for any drinker in their life	227	9.0
Caring for drinkers' children and other dependents	112	4.1
Cleaning up after their drinking	227	9.2
Picking up or taking drinkers somewhere	297	11.8
Overall caring for others	514	20.1

Jiang, H., Smit, K., et al. (2024). The burden of alcohol-related caring for others in Australia in the 2021 pandemic period. *Journal of Studies on Alcohol and Drugs*.

4. Who seeks help?

12% accessed a **service or support** due to AHTO
10% accessed **formal care** due to others' drinking

Family / friend
support



8.6%

More likely...

- Harmed by known other
- Harmed "a lot"
- Women

Police

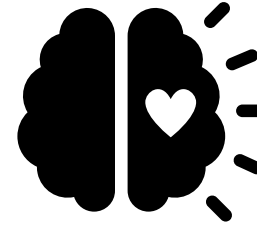


5.4%

More likely...

- Harmed by stranger
- Harmed "a lot"
- Financially stressed
- Have tertiary education

Counselling

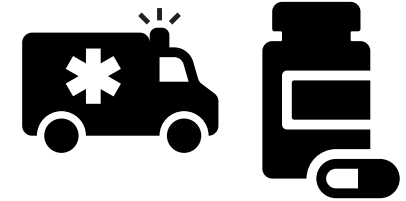


2.8%

More likely...

- Harmed "a lot"
- Women
- Financially stressed
- Have tertiary education

ED attendance /
Medical treatment



1.8%

Secondary data analyses

1. Adult deaths and hospital separations

- 261 adult deaths in 2020
- 17,351 hospital separations of adults in 2020/21

2. Child deaths and hospital separations

- 8 child deaths in 2020 and
- 281 hospital separations of children in 2020/21

Willoughby et al. (in press). Deaths and hospitalisations attributable to AHTO (source: ABS data 2008-2021)

3. Family violence

Where alcohol was possible/definite (2019-20)

Affected family member (victim-survivor)

Alcohol recorded	9,097
Alcohol <i>not</i> recorded	81,443

Other person (perpetrator)

Alcohol recorded	20,168
Alcohol <i>not</i> recorded	70,372

Total N	90,540
---------	--------

Source: Crime Statistics Agency - 1 July 2018 to 30 June 2023, Victoria



4. Child protection

N=120,576

Age

Mean (SD) 8.47 (4.74)

Median [Min, Max] 13 [0,18]

Sex (n, %)

Female 59,184 (49.08%)

Male 50,083 (49.83%)

Other 1,309 (1.09%)

Carer harmful alcohol use (n, %)

No 115,688 (95.95%)

Yes 4,888 (4.05%)

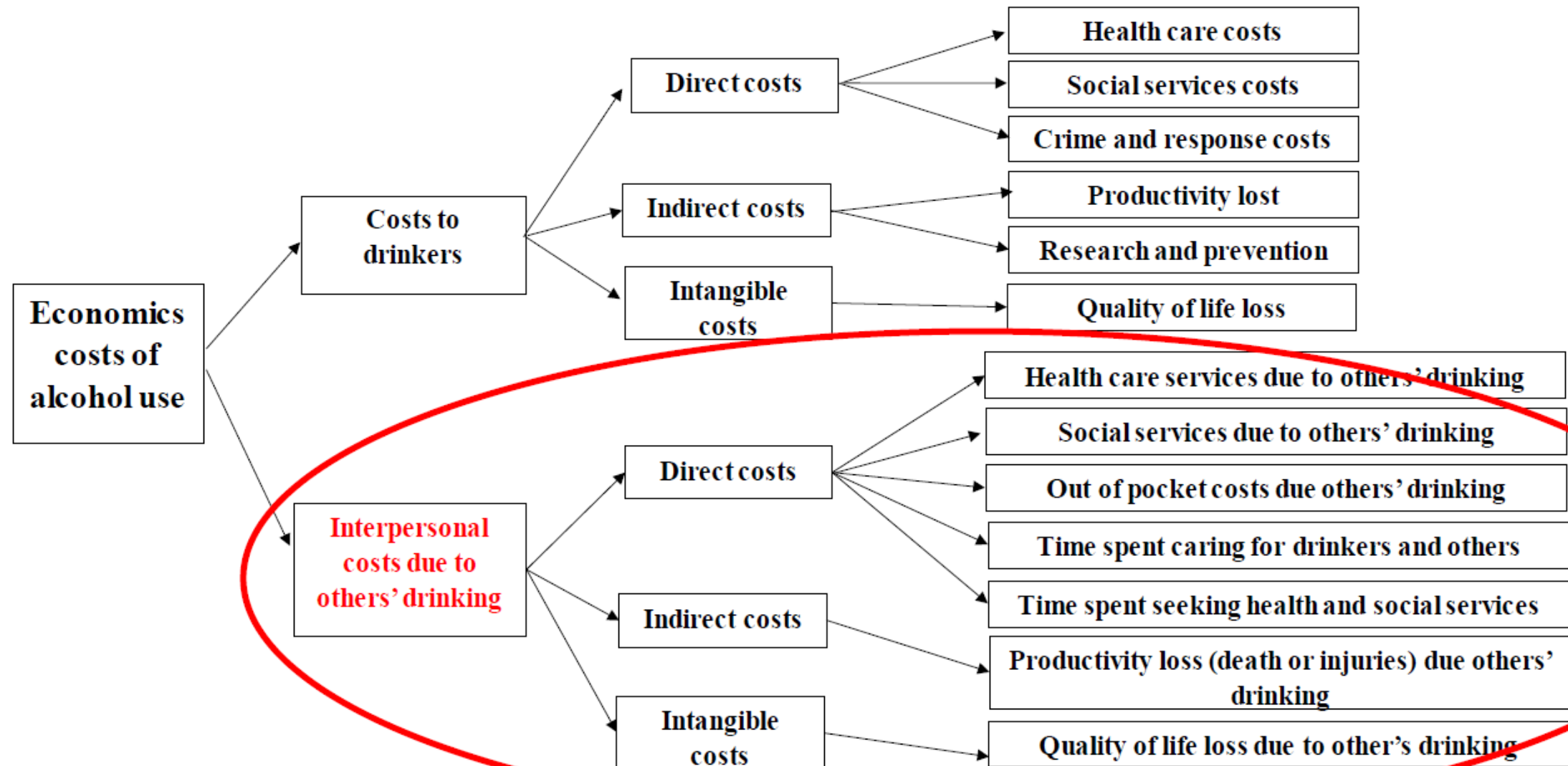
Family Violence (n, %)

No 83,892 (69.68%)

Yes 36,684 (30.42%)



Economic costs of alcohol use



Alcohol use has led to substantial economic costs to society

1

TANGIBLE COST

Direct Cost



Law-Enforcement and Policing Cost



Health care related costs



Car, Property and Belongings Damage costs

Indirect Cost



Absenteeism



Unemployment



Decreased Productivity



Reduction in earning Potential

2

INTANGIBLE COST

May include costs such as pain, Suffering and quality of life years lost

Tangible cost – cost to healthcare system

Cost to the Health care system due to others drinking	PAAF of harms due to others' drinking	Extrapolated number of cases	Cost per case/PYLL price (\$)	Total costs (\$ million)
Child assault & abuse	6.15%	33	2,030	0.07
Child pedestrian road crash	4.75%	19	5,541	0.11
Child non-pedestrian road crash	4.75%	92	5,541	0.51
Adult assault	27.90%	6,614	5,541	36.65
Adult pedestrian road crash	19.01%	598	5,541	3.31
Adult non-pedestrian road crash	19.01%	7,431	5,541	41.18
Total healthcare cost	-	14,787	-	81.82

Tangible cost – informal caregiving

Total sample N=2574	Yes (N)	Weighted %	Hours spent	Extrapolated cases (million)	Hourly rate (\$)	Total cost (\$billion)
Caring for any drinker in their life	227	9	64.2	1.8	32	3.5
Caring for drinkers' children and other dependents	112	4.1	183.8	0.821	32	4.6
Cleaning up after their drinking	227	9.2	31.8	1.8	32	1.7
Picking up or taking drinkers somewhere	297	11.8	14.3	2.4	32	1.0
Overall caring for others	514	20.1	81.0	4.0	32	10.5

Intangible harm – loss of quality of life

- Impact of others' drinking on health, wellbeing and life satisfaction
- Health and wellbeing indicators:
 1. **Health and wellbeing (EQ-5D index)**
 2. **Life satisfaction** ("how satisfied are you with life as a whole right now")



Results:	n	%	EQ-5d	Unit cost (\$)	Total cost (\$ billion)
No heavy drinkers	2,307	89.4	82.10		
≥1 household heavy drinker, and negatively affected	128	5.2	74.51	3,795	3.95
≥1 non-household heavy drinker, and negatively affected	501	19.5	74.63	4,402	17.20

Intangible harm – premature death

Cost of premature death	PAAF of harms due to others' drinking	Extrapolated number of cases	Cost per case/PYLL price (\$)	Total costs (\$million)
Child assault & abuse	6.15%	1	70,018	0.07
Child road crash	4.75%	1	70,018	0.07
Adult assault	27.90%	66	70,018	4.62
Adult road crash	19.01%	195	70,018	13.65
Total cost		263		18.42

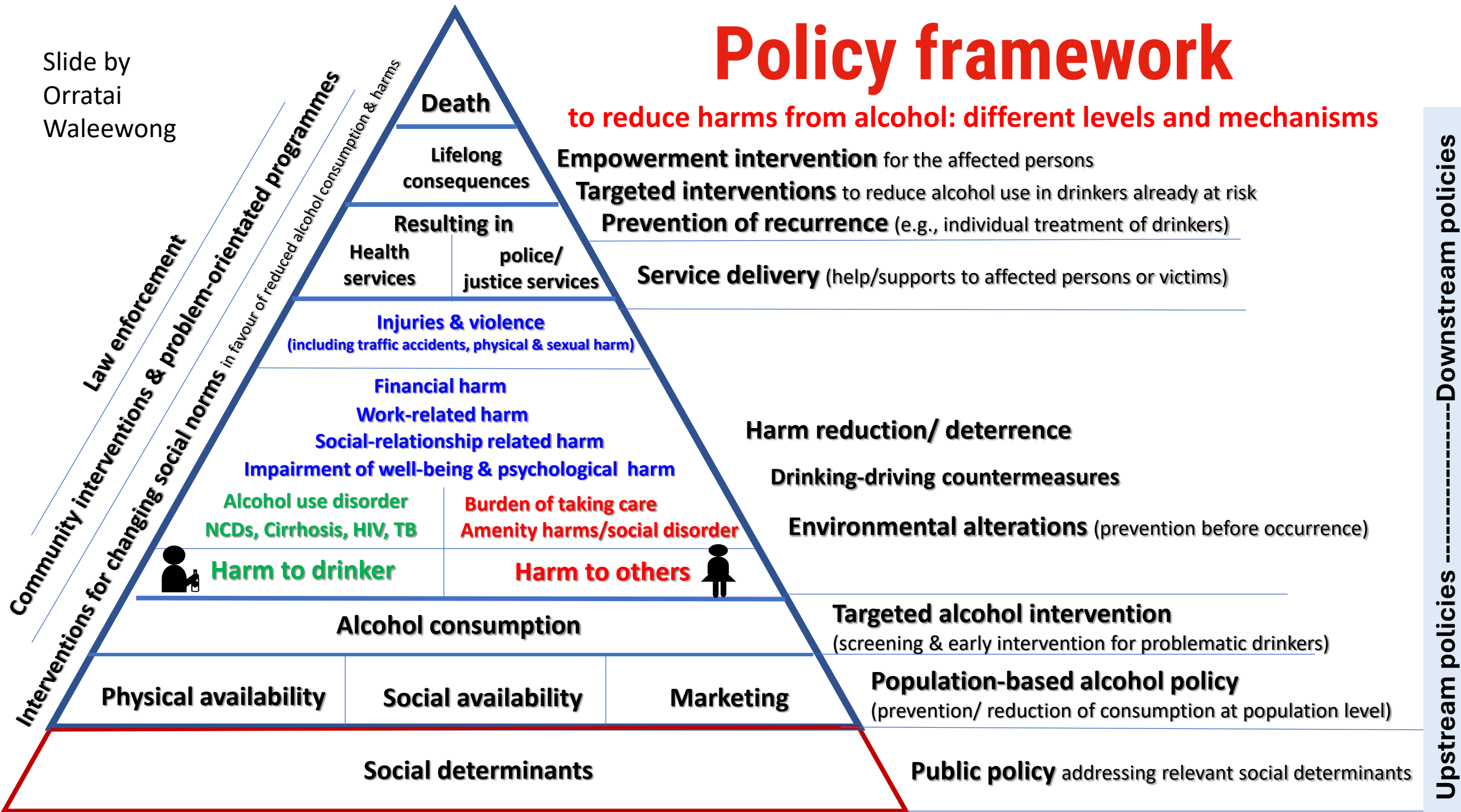
Summary

- We have presented a cost estimation of alcohol's harm to others in Australia in 2021.
- Healthcare costs attributable to alcohol's harm to others amounted to \$81.8 million.
- The estimated cost of informal caregiving due to others' drinking was \$10.5 billion.
- Loss of productivity due to others' drinking was estimated at \$21.15 billion.
- The estimated cost of premature deaths caused by others' drinking was \$18.42 million.
- Additional analyses will be conducted to estimate cost of harm to others in terms of crime costs, social services costs, out of pocket expenses and cost of productivity loss.
- Although still a work in progress, the costs of others' drinking are substantial.
- These costs underline the need for alcohol policy that address others' drinking.

Slide by
Orratai
Waleewong

Policy framework

to reduce harms from alcohol: different levels and mechanisms



Thank you



Acknowledgements

- Participants and researchers involved in these projects
- Australian Research Council Linkage Project (LP190100698)
- Australian National Health and Medical Research Council (GNT1065610; GNT2016706)
- International Health Policy Program, Thai Health, Thailand



References

- Anderson-Luxford, D., Room, R., Jiang, H., Livingston, M., & Laslett, A. (in preparation) The impact of others' drinking on health, well-being and life satisfaction.
- Anderson-Luxford, D., Heng, J., Gillmore, W., Laslett, A. (under review) Alcohol-related family violence in Western Australia before and during COVID-19. *Drug and Alcohol Review*
- Hopkins, C., Kuntsche, S., Dwyer, R., Anderson-Luxford, D., Laslett, A-M. (under review) *Prevalence of harm to children from others' drinking – an Australian survey.*
- Jiang, H., Doran, C. M., Room, R., Chikritzhs, T., Ferris, J., & Laslett, A.-M. (2022). Beyond the drinker: Alcohol's hidden costs in 2016 in Australia. *Journal of Studies on Alcohol and Drugs*, 83(4), 512-524.
- Laslett, A.-M., Catalano, P., Chikritzhs, T., Dale, C., Doran, C., Ferris, J., Jainullabudeen, T., Livingston, M., Matthews, S., Mugavin, J., Room, R., Schlotterlein, M., & Wilkinson, C. (2010). *The range and magnitude of alcohol's harm to others*. Alcohol Education and Rehabilitation Foundation.
<http://www.fare.org.au/wp-content/uploads/research/The-Range-and-Magnitude-of-Alcohols-Harm-to-Others.pdf>
- Laslett, A.-M., Room, R., Kuntsche, S., Anderson-Luxford, D., Willoughby, B., Doran, C., Jenkinson, R., Smit, K., Egerton-Warburton, D., & Jiang, H. (2023). Alcohol's harm to others in 2021: who bears the burden? *Addiction*.
- Laslett, A. M., Anderson-Luxford, D., Willoughby, B., Room, R., Doran, C., Egerton-Warburton, D., Jenkinson, R., Smit, K., & Jiang, H. (2024). Harm from the drinking of people you know: A range of effects from different relationships. *Addiction*. <https://doi.org/https://doi.org/10.1111/add.16509>
- Rintala, J., Room, R., Smit, K., Jiang, H., & Laslett, A.-M. (2023). The 2021 Alcohol's Harm to Others Survey: Methodological approach. *International Journal of Alcohol and Drug Research*, 11(2), 48–56-48–56.
- Rintala, J., Room, R., Smit, K., Jiang, J., & Laslett, A-M. (under review) *Assessing Supports Due to Other's Harmful Drinking*.
- Single E, Collins D, Easton B, Harwood H, Lapsley H, Kopp P, & E., W. (2003). *International guidelines for estimating the costs of substance abuse. 2nd Edition*.
<http://apps.who.int/bookorders/anglais/detart1.jsp?sesslan=1&codlan=1&codcol=15&codcch=561>
- Smit, K., Riordan, B., Rintala, J., Hopkins, C., & Laslett, A.-M. (In Press, *Addiction*). Carer alcohol use and child protection outcomes (2008-2021).
- Willoughby et al. (in press). Deaths and hospitalisations attributable to the drinking of others in Australia: Changes in national estimates from 2008-2021

Questions

- Anne-Marie Laslett
- a.laslett@latrobe.edu.au

