



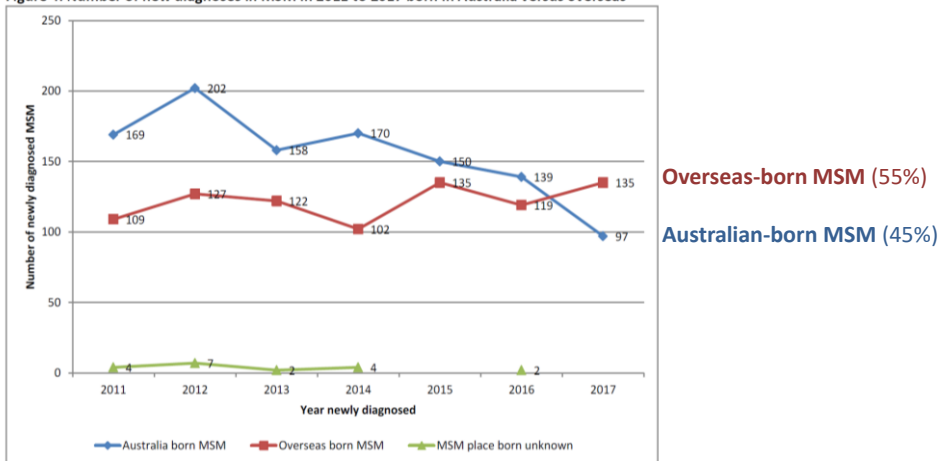
WITH, TO OR FOR? HIV and CALD in the Cascades

Multicultural HIV and Hepatitis Service

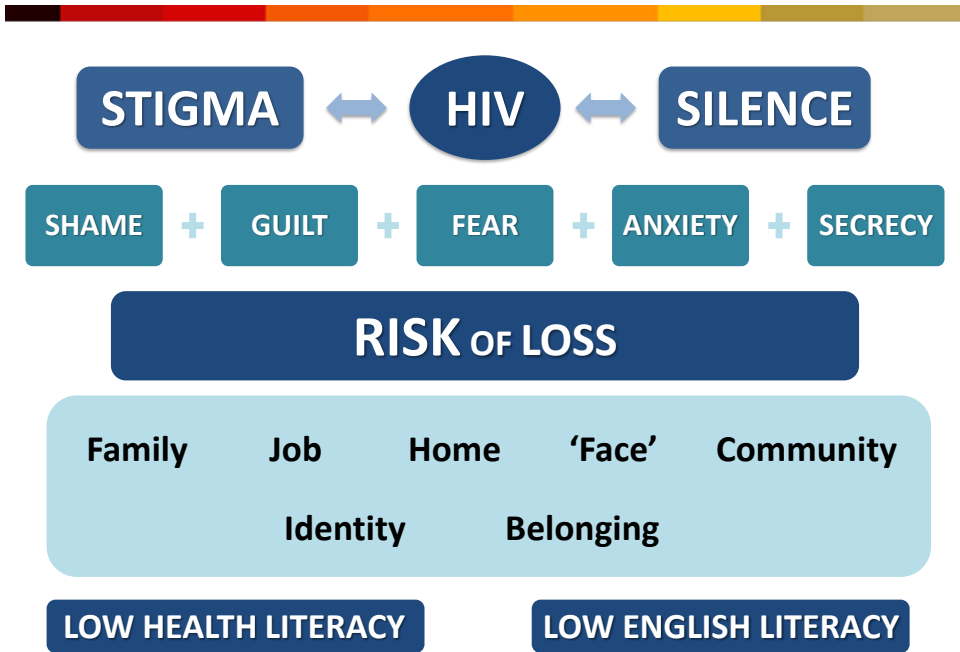
NSW HIV notifications - Divergent trends

2017: First instance of new HIV notifications higher among **overseas-born MSM** than Australian-born MSM

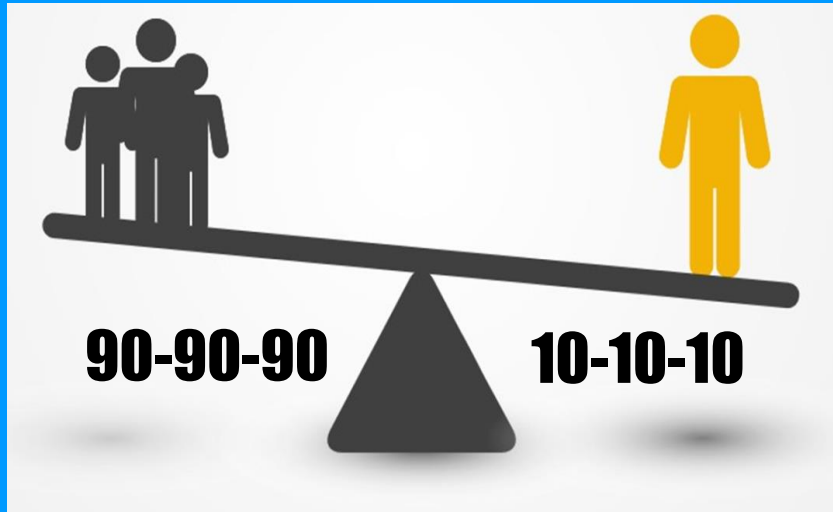
Figure 4: Number of new diagnoses in MSM in 2011 to 2017 born in Australia versus overseas



NSW HIV STRATEGY 2016-2020: DATA REPORT Quarter 4 & Annual, 2017



2020 ... and beyond



Donatella Cifali
Senior Social Worker
Donatella.Cifali@health.nsw.gov.au

www.mhahs.org.au

Facebook: @TheMHAHS