



PrEP and other drugs in the FLUX cohort: The new MTV generation

A joint presentation by Fengyi Jin, Mohamed Hammoud, and Stefanie Vaccher

PrEP & other drugs in FLUX



1. Prevalence and Initiation of Illicit Drug Use in the FLUX Study
2. The new MTV generation: Using Methamphetamine, Truvada, and Viagra to enhance sex and stay safe



Kirby Institute

Prevalence and Initiation of Illicit Drug Use in the FLUX Study

Fengyi Jin, Mo Hammoud, Lisa Maher, Louisa Degenhardt, Adam Bourne, Toby Lea, Brent Mackie, Nicky Bath, Marcus Pastorelli, Brigette Haire, Colin Batrouney, and Garrett Prestage, on behalf of the FLUX study team

Australasian HIV & AIDS Conference | 6 November 2017

PrEP & other drugs in FLUX



FLUX Cohort Study

- Following Lives Undergoing Change
- Prospective study on drug use in GBM in Australia
 - GBM 16.5 years and above
 - N=1710 (1st wave, Sep 2014-July 2015)
- Nationwide
- Entirely online
 - 6 monthly questionnaire following baseline survey

Cohort Characteristics

	N	%
Age		
16.5-24	501	29.3
25-29	305	17.8
30-39	417	24.4
≥40	487	28.5
HIV Status		
Negative	1279	74.8
Positive	138	8.1
Don't know/unsure	293	17.1

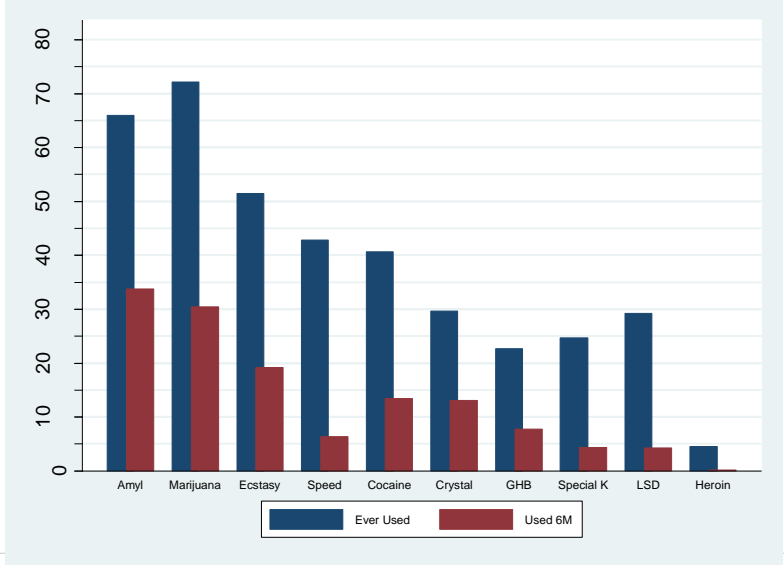
5

Definitions

- Prevalence (reported using at baseline)
 - Ever use
 - Recent use (last 6-month)
- Initiation: 12 month follow-up data
 - Retention: 77% at 6-month
71% at 12-month
 - Baseline: never used
 - Follow-up: any use in last 6 months

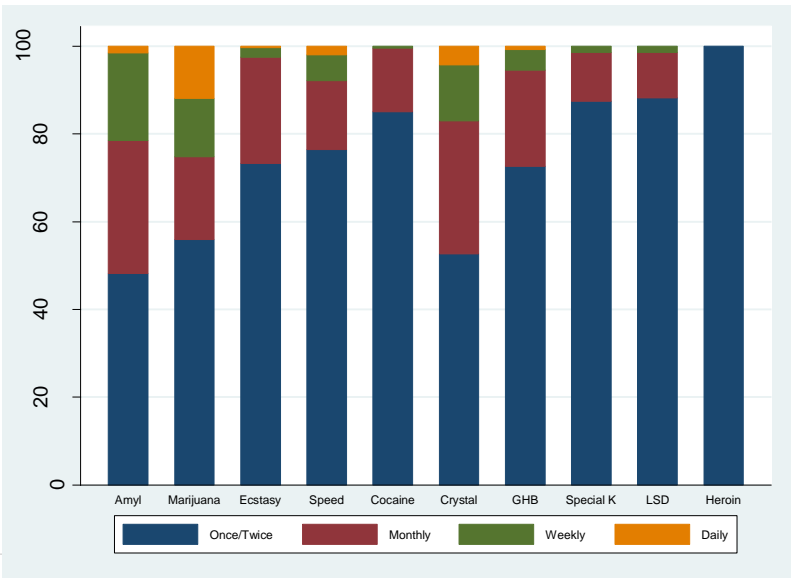
6

Drug prevalence in FLUX



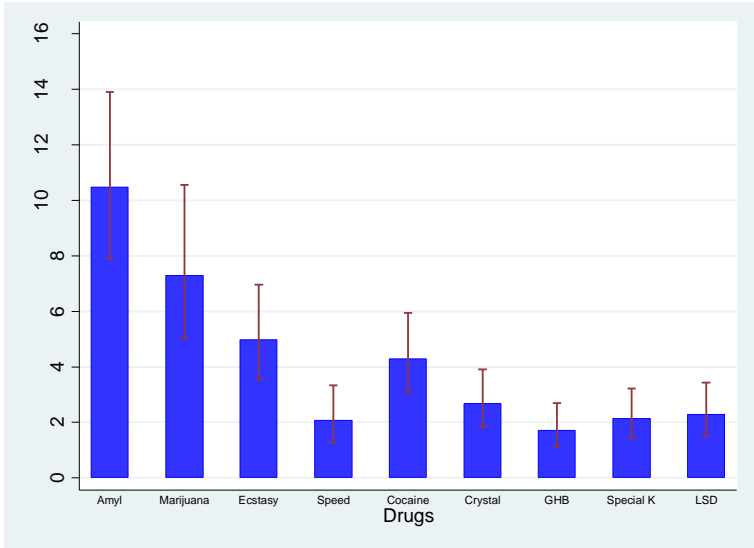
7

Frequency of recent use



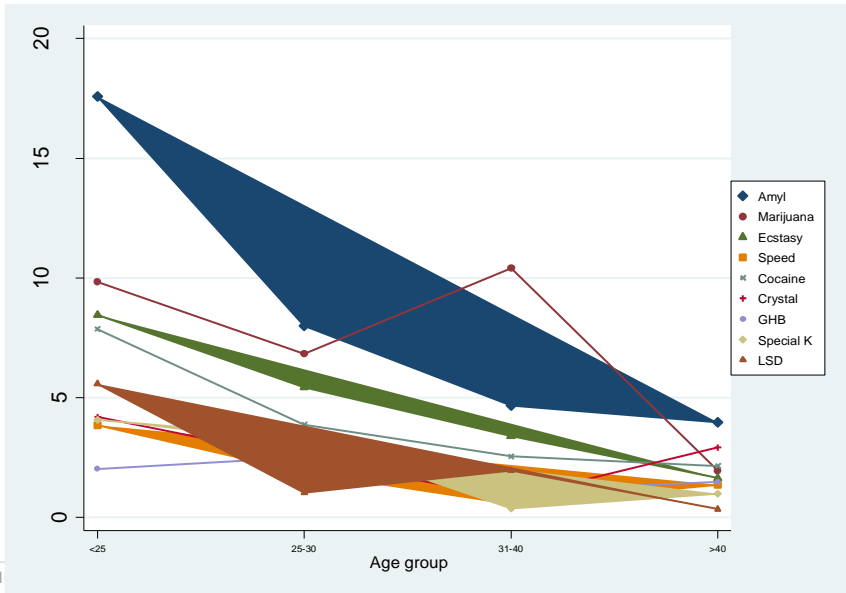
8

Drug initiation in FLUX



9

Drug initiation by age



1

Summary – Prevalence and Initiation

- Drug use very common in GBM
 - Mostly occasional use
- Close to half ever used crystal/meth are using currently
- Drug initiation rapid in younger GBM
 - Crystal/meth initiation relatively slow

11



The new MTV generation: Using Methamphetamine, Truvada, and Viagra to enhance sex and stay safe

Mohamed A. Hammoud & Stefanie Vaccher

Jeff Jin, Adam Bourne, Bridget Haire, Lisa Maher, Toby Lea, Garrett Prestage,
on behalf of the FLUX study team

Australasian HIV & AIDS Conference | 6 November 2017

Why MTV?

- GBM use illicit drugs to enhance sexual pleasure ('chemsex' or 'party n play').
- In the context of intensive sex partying networks, chemsex has been associated with HIV sexual risk behaviours.
- Methamphetamine and Viagra have been found to be strongly predictive of HIV infection.
- Truvada, as PrEP, virtually eliminates the possibility of HIV transmission.

→ MTV for fun, HIV prevention, and function

13 Hammoud MA, Vaccher S, Jin F, Bourne A, Haire B, Maher L, Lea T, Prestage, G. The new MTV generation: Using Methamphetamine, Truvada™, and Viagra™ to enhance sex and stay safe. International Journal for Drug Policy. Under Review

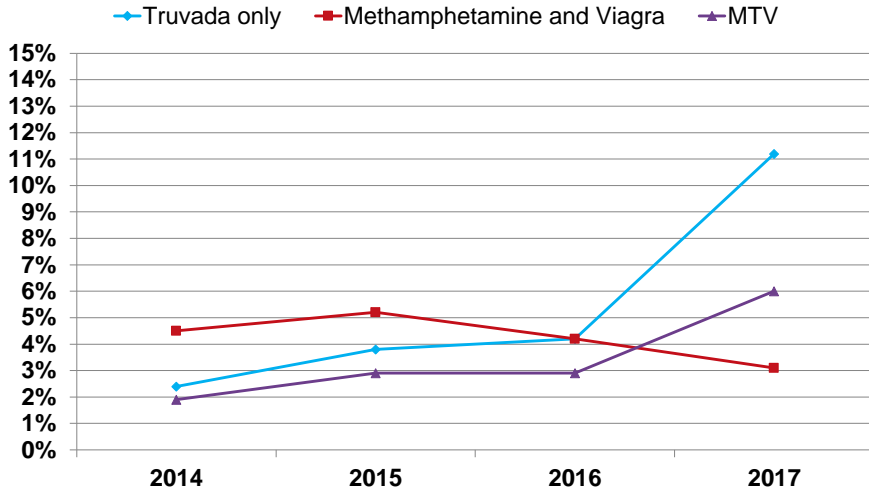
Results

Of 3253 baseline surveys, 1831 included data about the use of MTV

Characteristic	N (%)
Anglo-Celtic cultural background	1345 (73%)
University educated	1127 (62%)
Managerial or professional work	815 (15%)
Most friends are gay	622 (34%)
Spent most free time with gay friends	1043 (57%)
Identify as gay/homosexual	1629 (89%)
Had sex in the previous six months	1648 (90%)

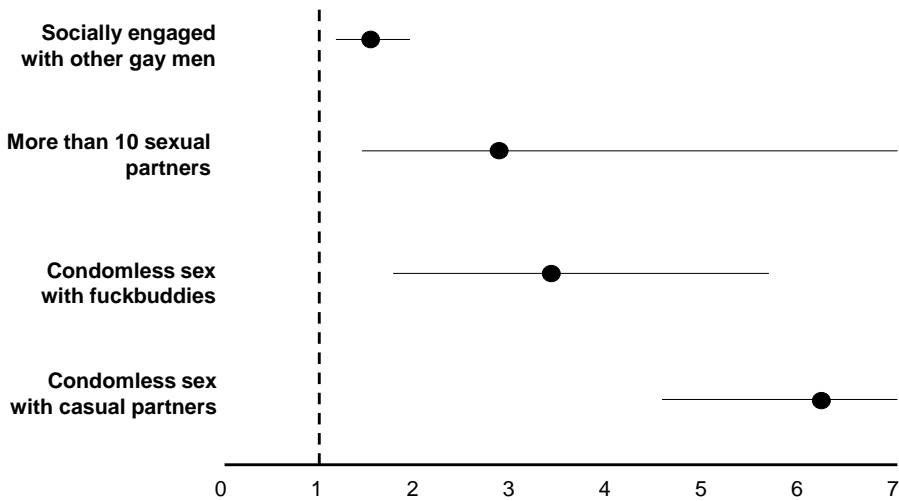
14 Hammoud MA, Vaccher S, Jin F, Bourne A, Haire B, Maher L, Lea T, Prestage, G. The new MTV generation: Using Methamphetamine, Truvada™, and Viagra™ to enhance sex and stay safe. International Journal for Drug Policy. Under Review

Prevalence over time



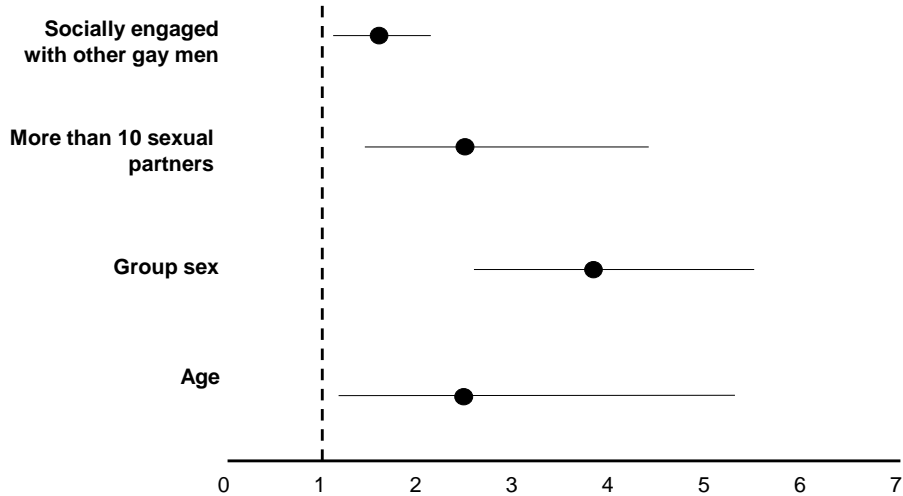
15 Hammoud MA, Vaccher S, Jin F, Bourne A, Haire B, Maher L, Lea T, Prestage, G. The new MTV generation: Using Methamphetamine, Truvada™, and Viagra™ to enhance sex and stay safe. International Journal for Drug Policy. Under Review

Meth, Viagra vs. Meth, Truvada, Viagra



16 Hammoud MA, Vaccher S, Jin F, Bourne A, Haire B, Maher L, Lea T, Prestage, G. The new MTV generation: Using Methamphetamine, Truvada™, and Viagra™ to enhance sex and stay safe. International Journal for Drug Policy. Under Review

Truvada vs. Meth, Truvada, Viagra



17

Hammoud MA, Vaccher S, Jin F, Bourne A, Haire B, Maher L, Lea T, Prestage, G. The new MTV generation: Using Methamphetamine, Truvada™, and Viagra™ to enhance sex and stay safe. International Journal for Drug Policy. Under Review

Summary

MTV was associated with:

- More socially engaged with other gay men
- More likely to engage in condomless sex with fuckbuddies and casual partners
- More likely to engage in group sex

18

Hammoud MA, Vaccher S, Jin F, Bourne A, Haire B, Maher L, Lea T, Prestage, G. The new MTV generation: Using Methamphetamine, Truvada™, and Viagra™ to enhance sex and stay safe. International Journal for Drug Policy. Under Review

Conclusions

- Including Truvada into drug use in the context of intensive sex partying offers a highly efficacious HIV harm reduction strategy.
- Truvada should be considered to complement other drugs that are used for chemsex.
- Gay community affiliations and social connections play a strong role in drug use among GBM.
- Provide an opportunity to promote the uptake of Truvada, particularly among those who do not use any other forms of HIV prevention.

19

Hammoud MA, Vaccher S, Jin F, Bourne A, Haire B, Maher L, Lea T, Prestage, G. The new MTV generation: Using Methamphetamine, Truvada™, and Viagra™ to enhance sex and stay safe. International Journal for Drug Policy. Under Review

