

HCV Support Groups: Do they still have a role in the DAA era?

Magel T , Holeksa J , Thiam A , Chu L , Yung R , Truong D , Conway B

Vancouver Infectious Diseases Centre

Disclosures

- Tianna Magel has nothing to disclose.
- Dr. Astou Thiam has received travel grants from AbbVie.
- Julie Holeksa has received travel grants from AbbVie.
- Letitia Chu has nothing to disclose.
- Rossitta Yung has nothing to disclose.
- Dr. David Truong has received honoraria from Merck and Co.
- Dr. Brian Conway has received grants, honoraria, travel funding, and holds advisory board positions with AbbVie, Merck & Co, Gilead Sciences and ViiV.



Background/aims

- Support groups were an essential part of the success of interferon-based therapies, particularly among vulnerable populations.
- The importance of the support group in the DAA era is increasingly questioned, given the shorter duration of treatment, its all-oral nature and its safety and tolerability.



VIDC Peer Support Group

- **Weekly HCV Support Group:**
 - Breakfast and lunch
 - Educational presentation
 - Gift card
 - Access to onsite physicians, nurses and social workers

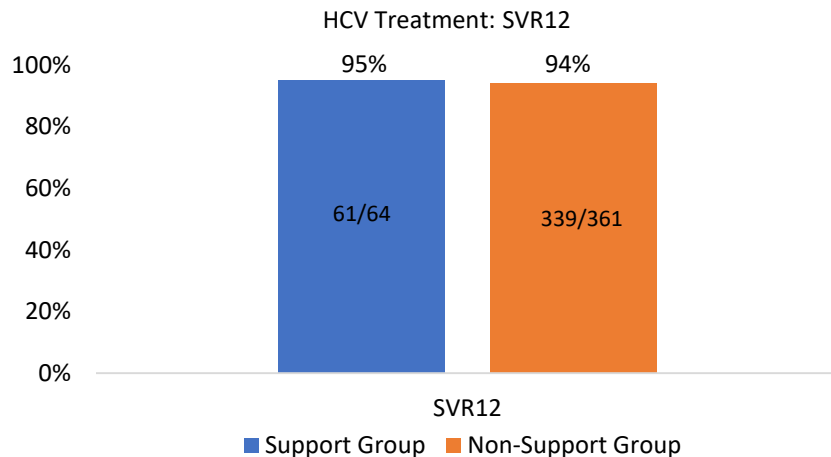


Methods

- All patients enrolled in multidisciplinary care
- Patients on DAA who **did** vs. **did not** participate in our centre's HCV support group.
- Retrospective comparative analysis
- Study Endpoints: HCV treatment completion (SVR12)



Results



No SVR	Support Group	Non-Support Group
LTFU	1	8
Discontinued	-	3
Deceased	-	3*
Relapse	-	1
Engaged elsewhere	2	7

Demographics	Support Group; n=64	Non-Support Group; n=361
Mean age (years)	54 (30-72)	54 (22-89)
Male (n, %)	57 (89)	242 (67)
Active Drug use (n,%)	42 (66)	168 (47)
OST (n,%)	28 (44)	126 (35)
Alcohol (n,%)	16 (25)	106 (29)
Psychiatric Comorbidity (n,%)	32 (50)	150 (42)
Homeless (n,%)	19 (30)	33 (9)

*2 deaths due to opioid overdose, 1 non-liver related complication



Conclusions/implications

High SVR12 among all patients engaged in multidisciplinary care programs such as ours

- Support group represents a more vulnerable population
 - Greater Homelessness
 - Recent Drug use
- Limitations: support group is a small, non-randomized cohort
- Implications: Support groups may remain uniquely relevant in the engagement of vulnerable patients



Acknowledgements

- VIDC patients, staff and supporters who are committed to the success of the program.



THANK YOU!