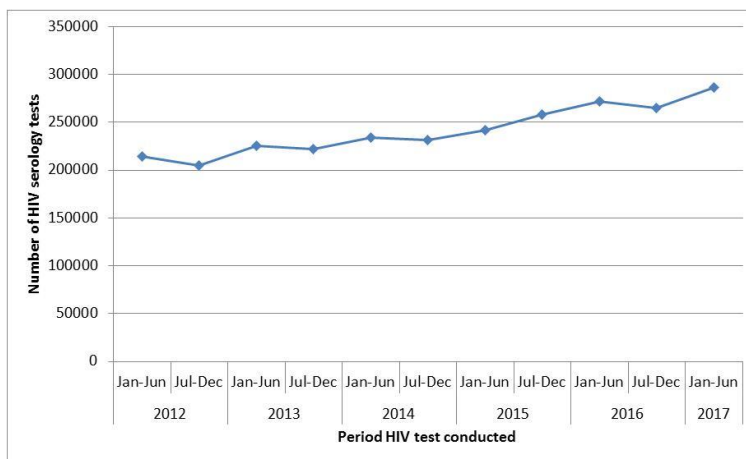


Vision is everything!

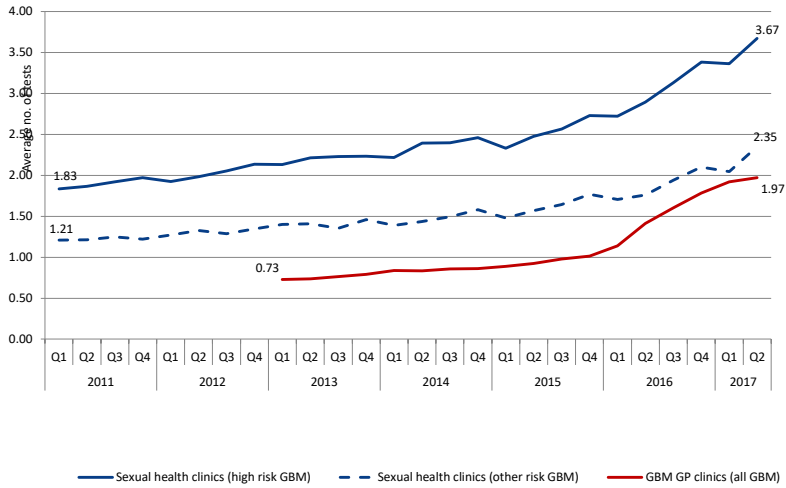
NSW Health denominator data	NSW Health collects HIV testing data from 15 labs (~95% of tests). Does not report purpose of test , requesting Dr or if it is a repeat test.
ACCESS Database, The Kirby Institute and the Burnet Institute	Network of public sexual health, GBM GP clinics (at least 50 GBM) & outpatients clinics: demo, behaviour, testing, diagnoses and treatment. Linked dataset with the ability to follow individuals.
NSW Health HIV Strategy Monitoring Database	Public sexual health & HIV clinics data provided by LHDs to monitor the NSW HIV Strategy: testing by priority population and ART status (not linked).
NCIMS	De-identified data on people notified with HIV at diagnosis and post six month: demo, reasons for testing, CD4 count, HIV viral load, testing history, risk exposure, retention in care and ART status.

Increasing HIV testing in NSW



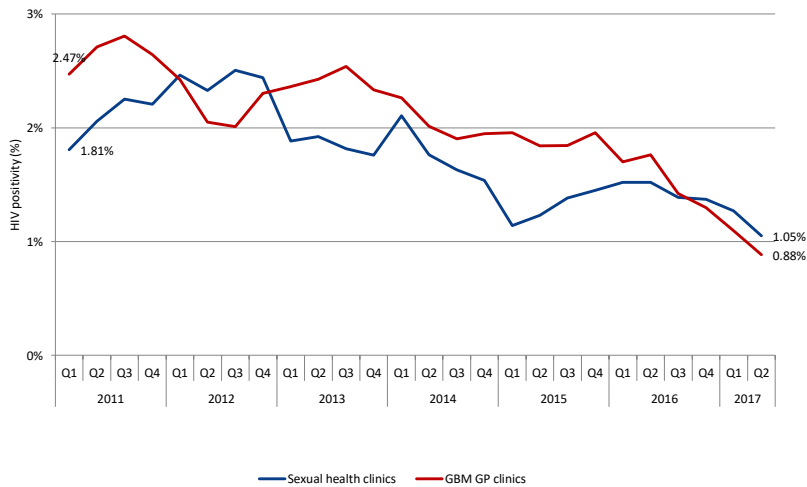
Source: NSW Health denominator data project

Increasing HIV testing frequency in GBM



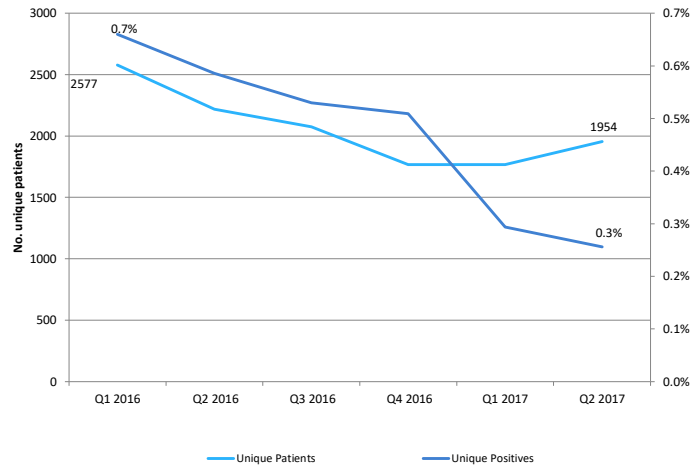
Source: ACCESS Database, The Kirby Institute and the Burnet Institute

HIV positivity in GBM attending sexual health and GBM GP clinics

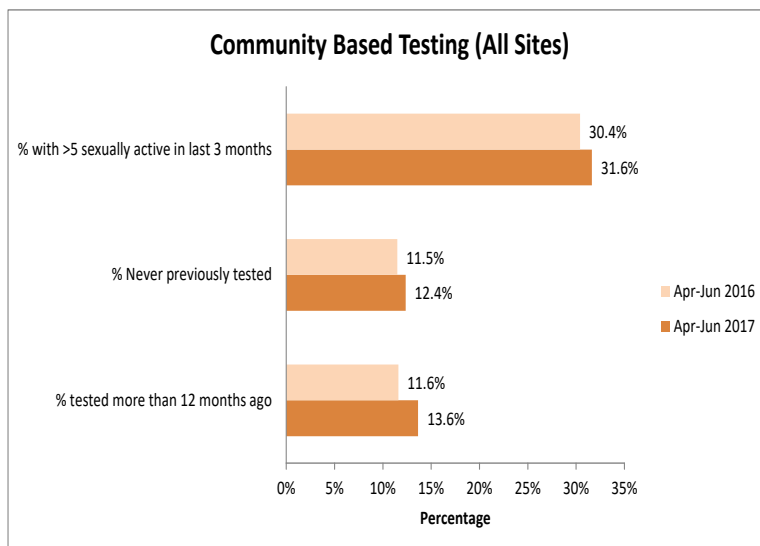


Source: ACCESS Database, The Kirby Institute and the Burnet Institute

Making it easier to have a HIV test – Community RHT



Source: NSW Health HIV Strategy Monitoring Database



NSW Dried Blood Spot Self-sampling Pilot

Additional testing option to reach those not engaged: CALD, hetero at risk, PWID

10 months: 505 tests

- 54% never tested/more than 2 years
- 77% MSM
- 26% high prevalence
- 32% partner/high prevalence



Summary

- HIV testing continues to increase
- High and well targeted in GBM
- DBS – reaching those not engaged

BUT

- Who are we missing?
- We can't take our foot off the pedal
- Targeting those non-engaged

