



NCETA
National Centre for Education
and Training on Addiction



Evaluation of an integrated alcohol and other drug service in South Australia: Short-term impacts

Mark Thompson, Victoria Cock, Aboriginal Governance Group, Kirrilly Thompson, Neophytos Georgiou,
Jacqueline Bowden & Courtney Ryder

Presenter: Blaire Brewerton, DASSA



Government of South Australia
SA Health



FHMRI





The researchers respectfully acknowledge the Kaurna people as the Traditional Owners of the land and waters where we are located.

We pay our respects to Kaurna elders past, present and emerging.

All artwork in this presentation was produced by Clients in the Program.

Please do not copy or distribute.



Integrated Alcohol and Other Drug (AOD) program



- *Where?*
 - Withdrawal services facility in Adelaide, SA
- *When?*
 - 12 weeks, August to November 2023
- *Target clients?*
 - Alcohol dependent people experiencing homelessness or sleeping rough in the CBD
- *What?*
 - Supplied Alcohol Provision Program integrated into a holistic health service
 - Voluntary - Invitation through outreach from DASSA Aboriginal Connection Program (ACP) Team.

Aim of the evaluation

- Identify and evaluate the broad range of short-term impacts

Method

- Analysis of deidentified Progress and Summary Notes

Analysis

- Descriptive analysis of Progress Notes using Excel
- Qualitative content analysis of Summary Notes using Nvivo

Aboriginal oversight

- Aboriginal governance group of six members.

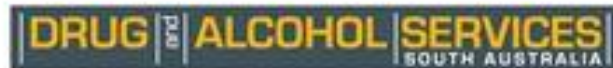


Findings: Clients and engagement

- 21 clients stayed at least one night
- Six clients entered the program twice (27 admissions)
- Median stay was 15 nights per client and 14 nights per admission
- 19 clients identified as Aboriginal
- Average age 42 years (range: 37-49)
- Two thirds were female (n=14 or 67%)



Government of South Australia
SA Health



NCETA

FHMRI



Flinders
University

Medical health conditions

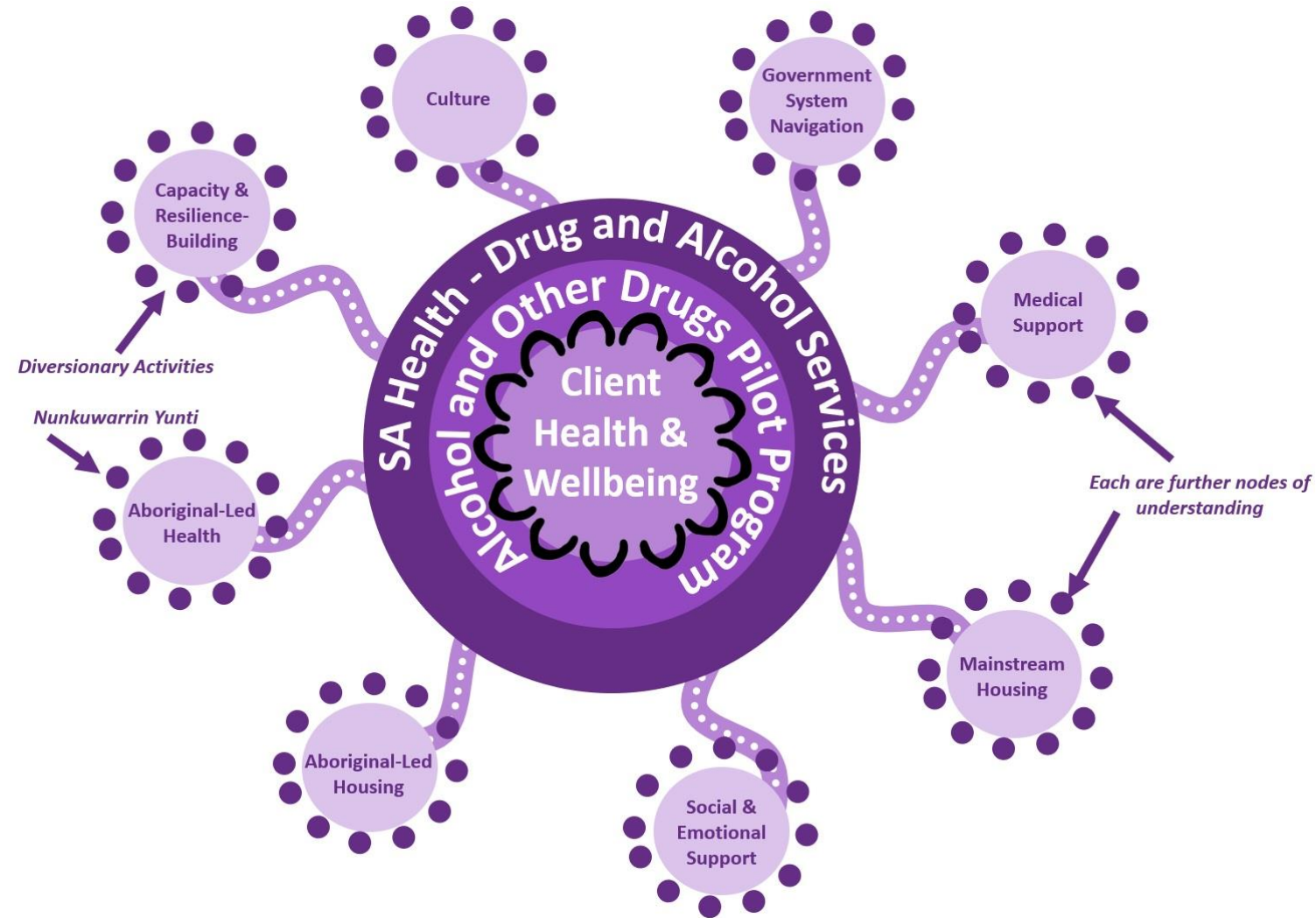
	Total admissions (N=27)	Percent (%)
Substance Use or Dependence	16	59
Miscellaneous/Other	14	52
Dermatological Conditions and Infections	12	44
Vitamin D Deficiency	12	44
Endocrine/Metabolic Conditions	10	37
Cardiovascular Conditions	9	33
Respiratory Conditions	8	30
Dental Caries	7	26
Hepatitis	7	26
Alcohol-Related Conditions	5	18
Liver Cirrhosis	5	19
Nutritional Deficiencies and Electrolyte Imbalances	5	19
Chronic Pain and Mobility Issues	4	15
Gastrointestinal Conditions	4	15
Clinically Apparent Limb Injury (Broken)	2	7
Mental Health or Cognitive Impairment	2	7
Neurological Conditions (Not Already Classified)	2	7
Other Nerve Damage	2	7
Sexually Transmitted Infection	2	7
Musculoskeletal Conditions	1	4
Peroneal Nerve Palsy (Nerve injury that affects lower leg, foot)	1	4

20 (74%) admissions reported 4+ health conditions.

Four (15%) admissions reported 10+ health conditions.

At least 5 (19%) new diagnoses.

Findings: Eight domains of support and benefits



Government of South Australia
SA Health



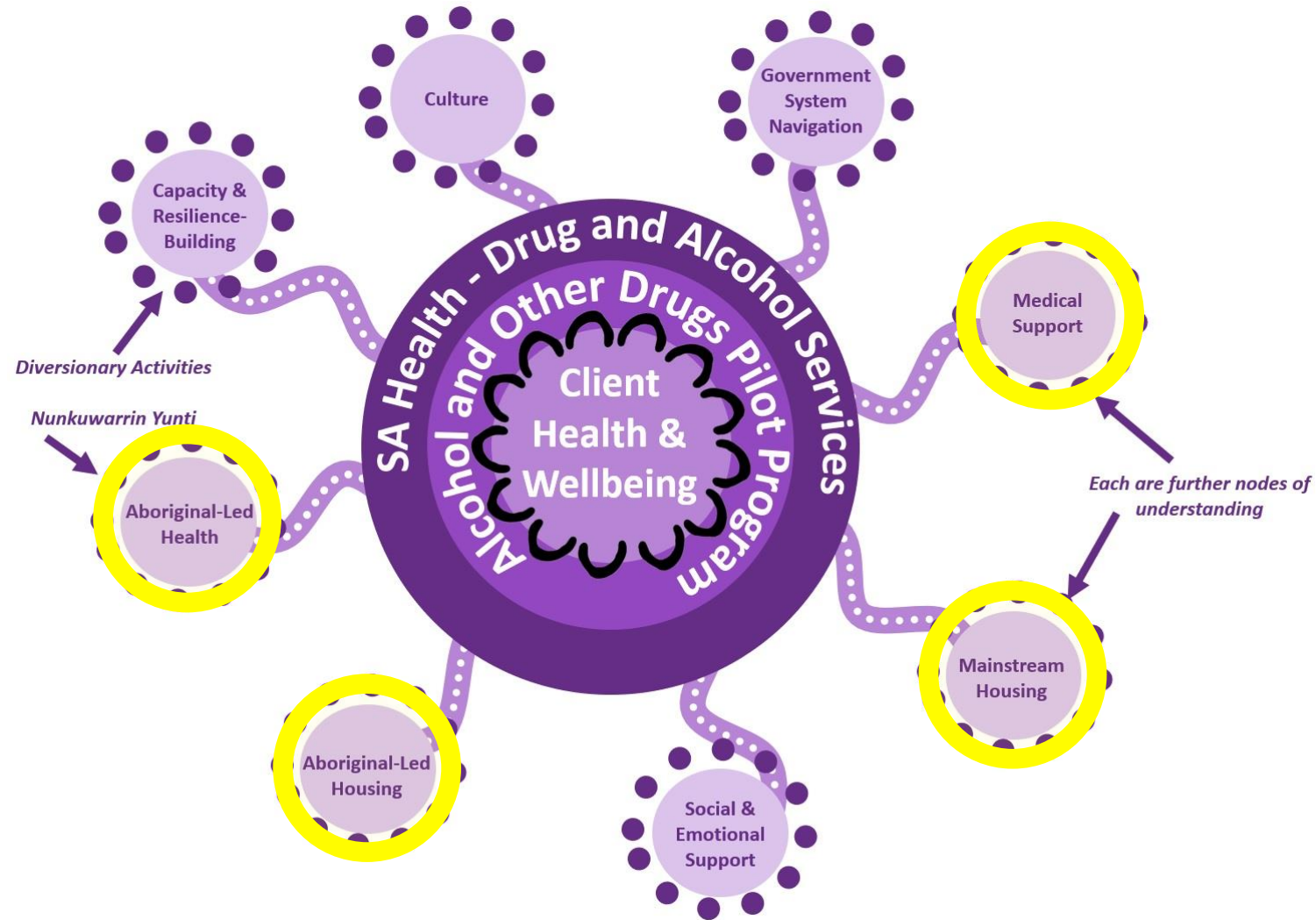
NCETA

FHMRI



Flinders
University

Findings: Focus for today's presentation



Government of South Australia
SA Health

DRUG | ALCOHOL | SERVICES
SOUTH AUSTRALIA



NCETA

FHMRI



Flinders
University

Highlights: Housing

- Mainstream Housing
 - 399 nights of safe accommodation over 27 admissions
 - Three clients secured housing:
 - Aged Care Living unit
 - Housing for Health unit
- Aboriginal-led housing
 - Nine clients were supported to interact with Aboriginal-led housing:
 - Aboriginal Hostels Ltd
 - Wardli-Ana Towards Home

Highlights: Alcohol consumption and health

- Six (29%) clients stopped drinking
 - 4 (15%) withdrew
 - 2 (10%) self-weaned
- Five admissions received a new diagnosis
- Over half of clients (56%) given at least one referral to a healthcare provider for a specific concern, including:
 - SA Dental (26%), Respiratory (26%), Gastroenterology (11%), Podiatry (11%), and Cardiology (11%).
- Twelve clients were supported to interact with three Aboriginal-led health and allied health organisations
- Two clients were referred to Aboriginal health and allied health organisations.



Government of South Australia
SA Health



NCETA

FHMRI



Flinders
University

Conclusions

- The Program is among the first in Australia designed to address the multiple and complex health and psychosocial needs of this group
- It provided immediate secure housing and personal support to 21 alcohol-dependent clients
- Future evaluation is needed to identify medium and long term benefits
- A health economics study is being undertaken of cost-benefits.