

High SARS-CoV-2 seroprevalence but no severe courses of COVID-19 disease among people in opioid agonist treatment in Zurich

Philip Bruggmann^{1,2}, Oliver Senn², Anja Frei³, Milo Puhan³, Jan Fehr³, Luis Falcato¹

¹Arud Centre for Addiction Medicine, Zurich, Switzerland

²Institute for Family Medicine, University Hospital, Zurich, Switzerland

³Institute for Epidemiology, Biostatistics and Preventive Medicine, University Zurich, Switzerland

Acknowledgement:

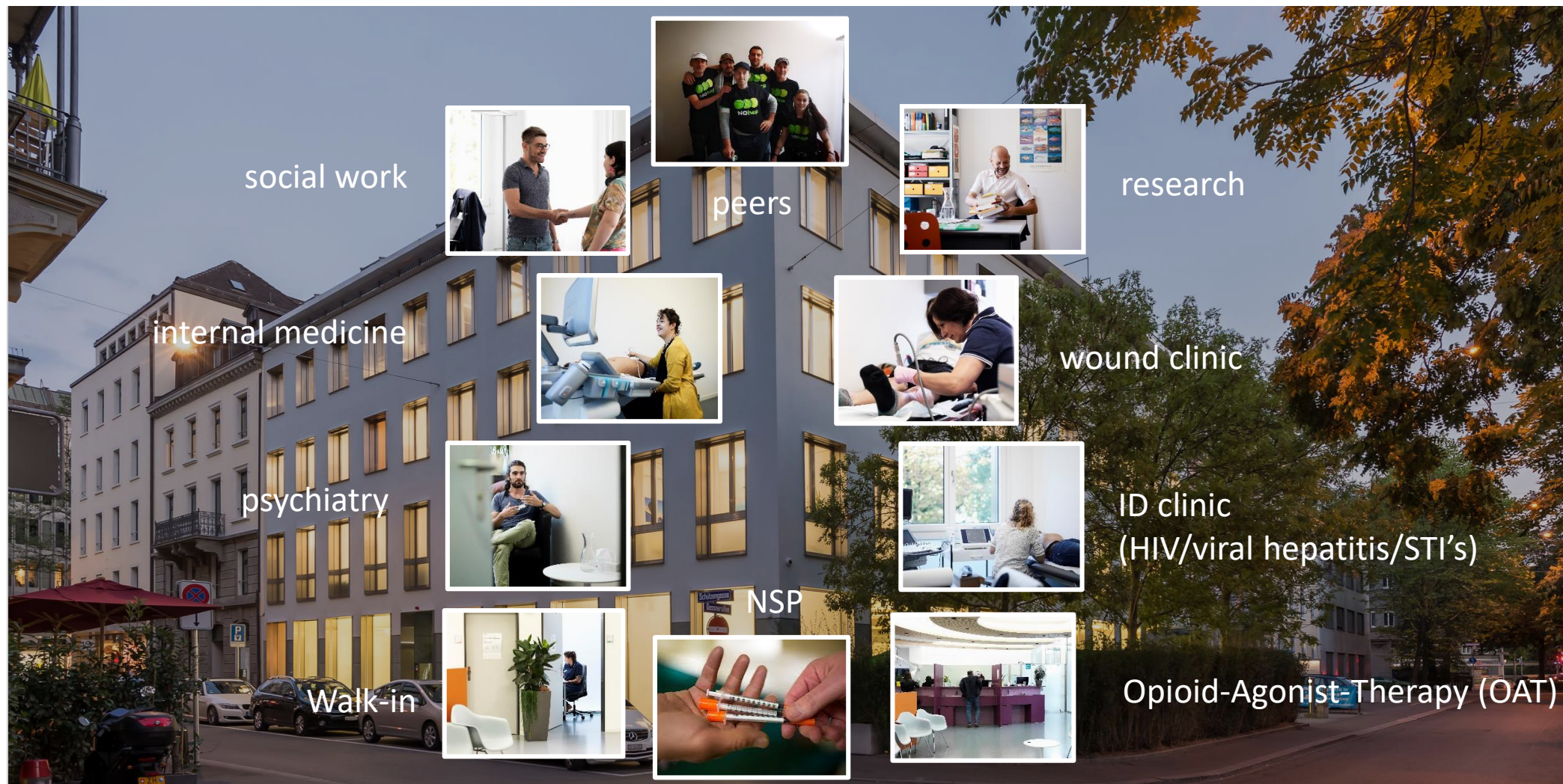
Thanks to all participants of this study

Disclosure:

The study was financed by a grant of the City of Zürich.

No personal conflict of interest to declare for all authors.

Arud – integrated, comprehensive addiction care



Background: People in OAT and COVID-19

At risk for severe COVID-19

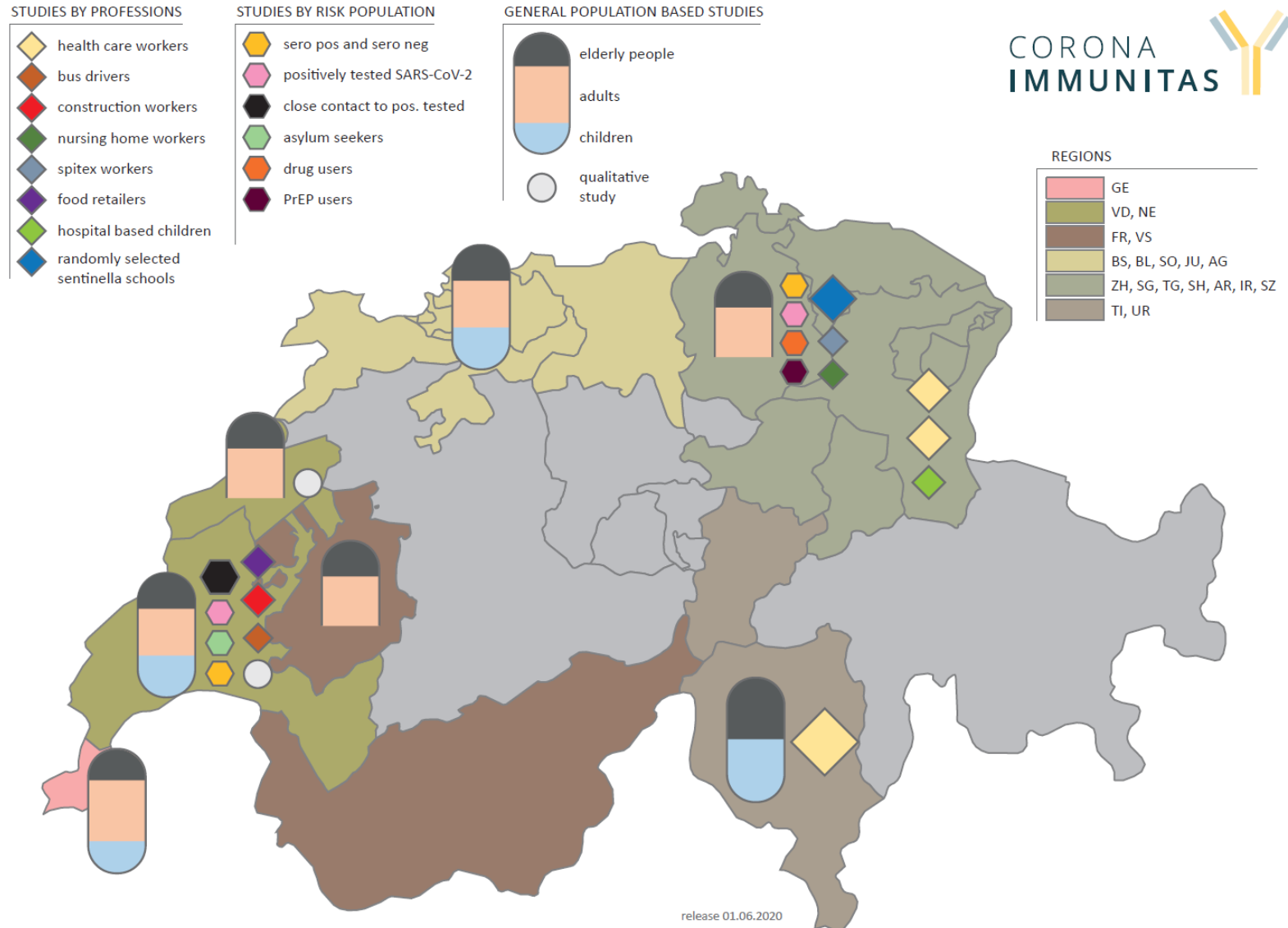
- liver cirrhosis
- COPD
- cardiovascular diseases
- HIV

At elevated risk of being infected

- living situation
- substance procurement
- limited access to protection measures



Corona Immunitas Study



Results

Table 1

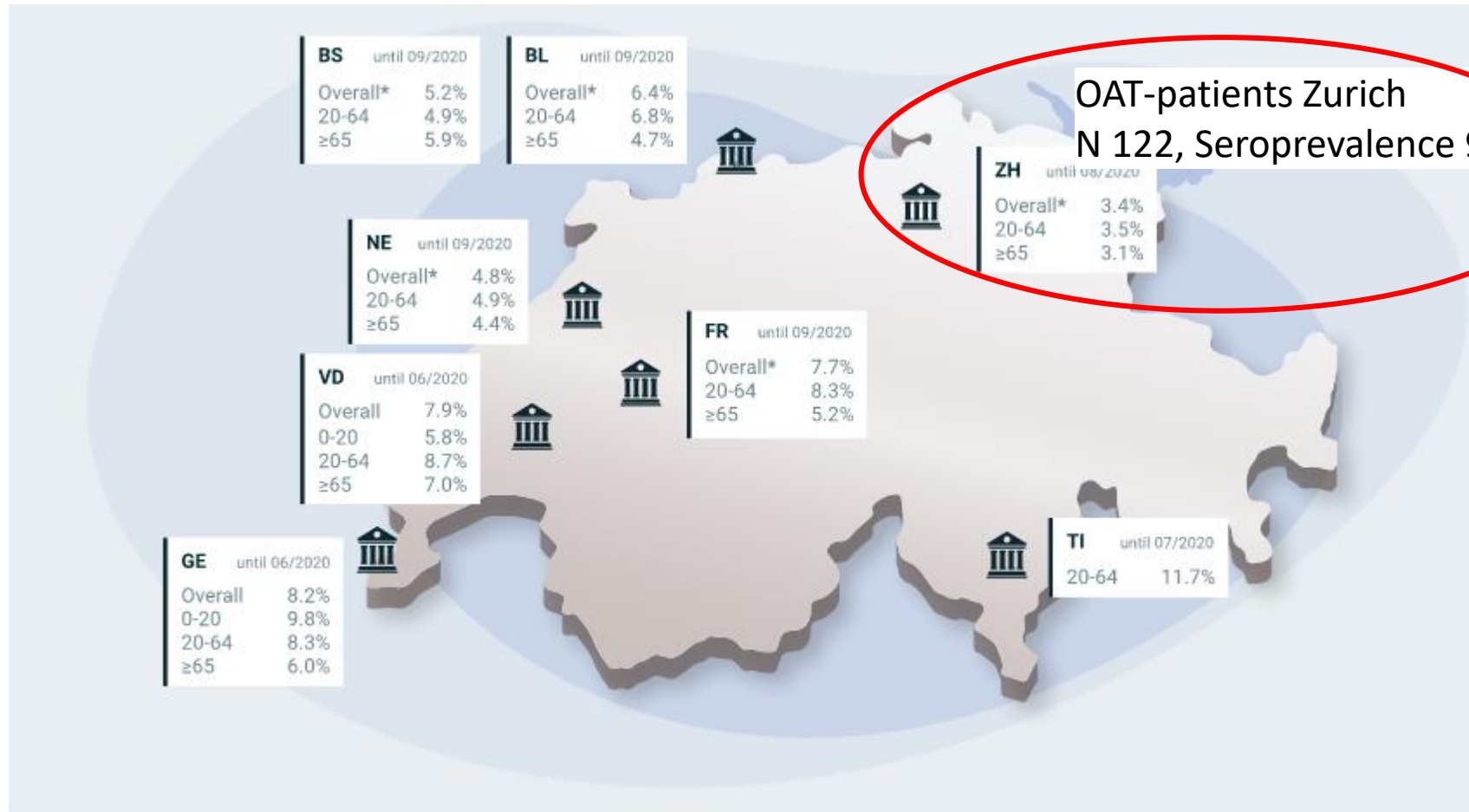
Characteristics of the study participants' compared with the population-based sample		Population sample n = 472	OAT patients sample n = 122	p ¹
Trait	Value(s); (unit or explanation)			
Age	mean (sd); (Years, Population: 20 to 64, OAT: 18 to 72)	44.7 (11.7)	44.3 (9.4)	0.727
Sex	n (%); Male	226 (47.9%)	85 (69.7%)	< 0.0001
BMI	mean (sd); (kg/m ²)	24.9 (4.9)	24.5 (4.1)	0.407
Sitizenship	n (%); Swiss	358 (75.8%)	98 (80.3%)	0.300
Education	n (%); Primary	13 (2.8%)	32 (26.2%)	< 0.0001
	n (%); Secondary	185 (39.2%)	64 (52.5%)	0.008
	n (%); Tertiary	268 (56.8%)	11 (9.0%)	< 0.0001
Household size	n (%); No other people in the same household	70 (15.0%)	55 (45.1%)	< 0.0001
	n (%); One other people in the same household	176 (37.6%)	33 (27.0%)	0.029
	n (%); Two or more other people in the same household	144 (47.4%)	27 (22.1%)	< 0.0001
Chronic conditions*	n (%); No chronic condition	378 (80.3%)	58 (47.5%)	< 0.0001
	n (%); At least one chronic condition	93 (19.7%)	64 (52.5%)	
Smoking status	n (%); Current smoker	117 (24.8%)	105 (86.1%)	
	n (%); Ex-smoker	252 (53.5%)	10 (8.2%)	< 0.0001
	n (%); Never smoker	102 (21.7%)	5 (4.1%)	
Health related quality of life limitations (Eq5d-5l)	n (%); Yes, Walking around problems present (2 to 5 = yes)	45 (9.5%)	30 (24.6%)	< 0.0001
	n (%); Yes, Self care problems present (Washing or dressing myself etc., 2 to 5 = yes)	5 (1.1%)	12 (9.8%)	< 0.0001
	n (%); Yes, Problems performing daily activities present (2 to 5 = yes)	36 (7.6%)	35 (28.7%)	< 0.0001
	n (%); Yes, Pain or physical discomfort present (2 to 5 = yes)	134 (28.4%)	63 (51.6%)	< 0.0001
	n (%); Yes, Anxiety or depression present (2 to 5 = yes)	117 (24.8%)	55 (45.0%)	< 0.0001
	mean (sd) Selfrating of actual health status (VAS; 0 =worst to 100 = best)	85.3 (11.6)	69.1 (18.8)	< 0.0001
Episodes of symptoms	n (%); No episodes of symptoms in 2020, at least for 3 days	190 (40.3%)	78 (63.9%)	< 0.0001
	n (%); One or more episodes in 2020, at least for 3 days	282 (59.7%)	44 (36.1%)	
Adherence to recommended precaution measures	mean (sd) Distancing in the past 7 days (1 = never to 5 = allways)	4.1 (0.7)	3.8 (1.3)	< 0.001
	mean (sd) Stay at home in the past 7 days (1 = never to 5 = allways)	3.2 (1.1)	3.2 (1.4)	
	mean (sd) Wearing face mask in the past 7 days (1 = never to 5 = allways)	3.0 (1.2)	3.8 (1.2)	< 0.0001
	mean (sd) Hygiene measures (washing hands etc., 1 = never to 5 = allways)	4.6 (0.6)	4.4 (0.8)	0.003
Previous SARS-CoV-2 test results	n (%); Tested positive	0 (0.0%)	1 (0.8%)	0.052
	n (%); Tested negative	41 (8.7%)	29 (23.8%)	< 0.0001
	n (%); No test done	429 (91.1%)	88 (72.1%)	< 0.0001
SARS-CoV-2 in immediate environment	n (%); No people in immediate environment previously tested positive	424 (89.8%)	114 (93.4%)	0.226
	n (%); One people in immediate environment previously tested positive	17 (3.6%)	3 (2.5%)	0.549
	n (%); Two or more people in immediate environment previously tested positive	31 (6.6%)	5 (4.1%)	0.304
Trips taken outside the country	n (%); No trips since January 2020	251 (53.2%)	109 (89.3%)	
	n (%); One trip since January 2020	110 (23.3%)	8 (6.6%)	< 0.0001
	n (%); Two or more trips since January 2020	111 (23.5%)	5 (4.1%)	

BMI = Body-Mass-Index; SARS-CoV-2 = Severe Acute Respiratory Syndrome Coronavirus 2 Infection

*) Excluding allergies

1) Significance of two-sided test; Chi square for categorical variables; independent samples t-test for continuous variables

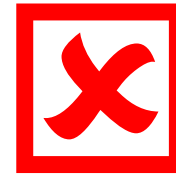
Results



Conclusion: People in OAT and COVID-19

At risk for severe COVID-19

- liver cirrhosis
- COPD
- cardiovascular diseases
- HIV



At elevated risk of being infected

- living situation
- substance procurement
- limited access to protection measures



Acknowledgements

Arud Team:

Tina Horschick	Mirjam Kälin
Romi Ledermann	Franciska Brezan
Andrea Zumbühl	Patrick Miller
Nadja Pauli	Andreas Hüttenmoser
Denise Hitz	Oli Wehrli
Astrid Götz	Marcel Kägi
Regina Esser	Sam Murbach
Claudia Bernardini	Anton Kohler
Lina Hijazi	Martin Luck

Corona Immunitas Zurich-Team:

Manuela Rasi
Olivia Kotoun
Larissa Schori
Julia Kopp
Marco Kaufmann
Erin West

Thank you for your attention!

p.bruggmann@arud.ch

www.arud.ch

www.coronaimmunitas.ch

arud