

Cascade of Care

New Diagnoses of HIV Referred to Auckland City Hospital, 2015:



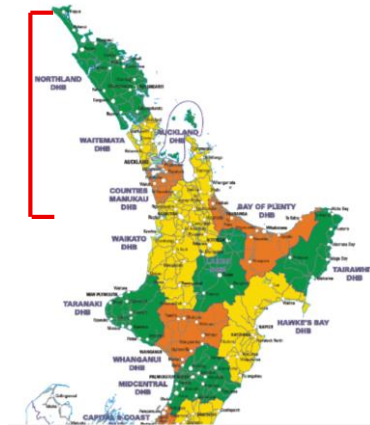
Dr Annabelle Donaldson, Infectious Diseases Consultant, Auckland City Hospital

HIV care – Auckland and Northland

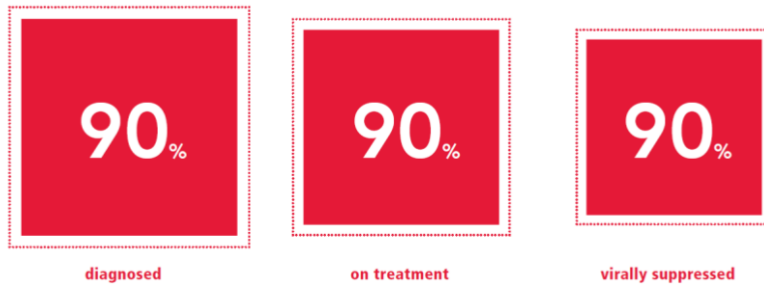
1. Auckland City Hospital:



2. Sexual Health Services:



UNAIDS Goals by 2020



- At least 73% of all people living with HIV worldwide will be virally suppressed.

New Zealand Situation:

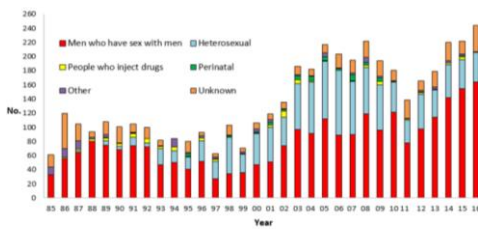


Figure 1: Number of people diagnosed with HIV in New Zealand through Western Blot antibody test and since 2002 through viral load (VL) testing, by year of diagnosis and means of infection. It is important to appreciate that infection may have occurred a number of years prior to diagnosis

- **Restrictions on prescribing ART:**
 - Symptomatic HIV
 - Or
 - CD4 count <500

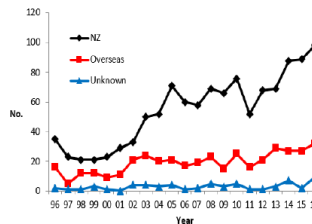
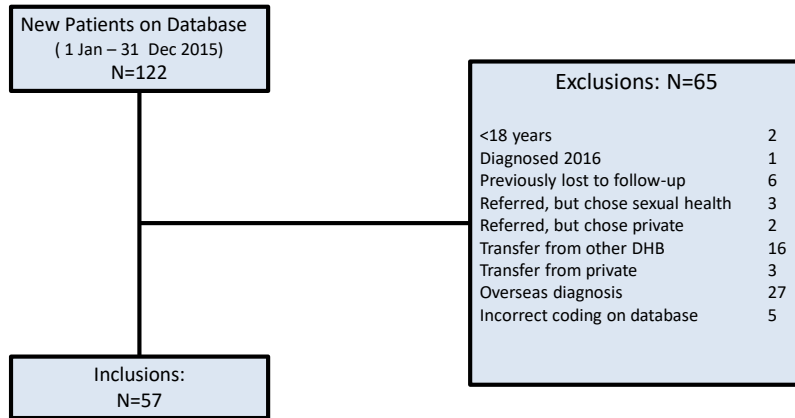


Figure 2: Place of infection of MSM first diagnosed in New Zealand by antibody test annually since 1996 and including those reported by viral load testing since 2002

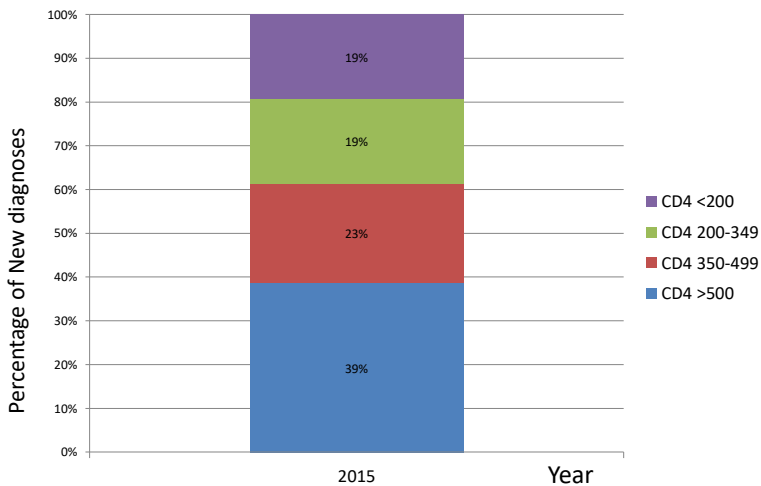
New Diagnoses of HIV in 2015 at Auckland City Hospital



Median age: 40 years

Gender: Male 53/57 (93%); female 3/57 (5%)

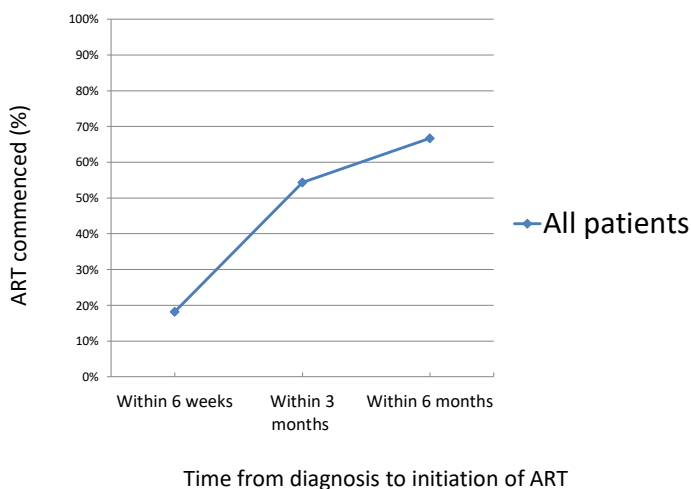
CD4 Count at Diagnosis



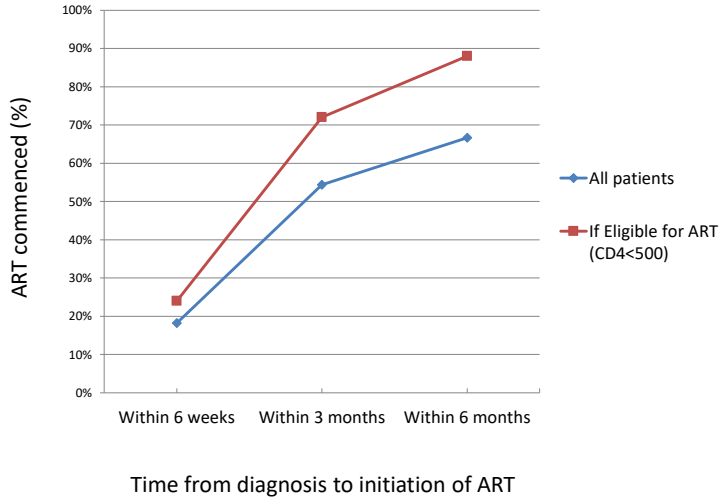
Linkage to Care:

- Defined as seen at least once by an Infectious Diseases physician for assessment and planning of ongoing management of HIV infection.
- 55/57 (96.5%) patients linked to care
- Median time from referral to first contact with ID services: 1 day (IQ range: 0 - 3 days)
- Median time from referral to first specialist appointment: 35 days (IQ range: 10-48 days)

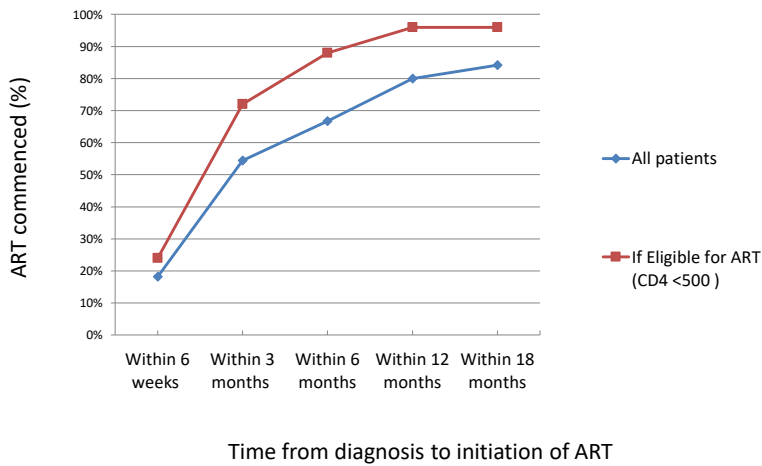
Timing of ART following New Diagnosis of HIV, Auckland City Hospital, 2015



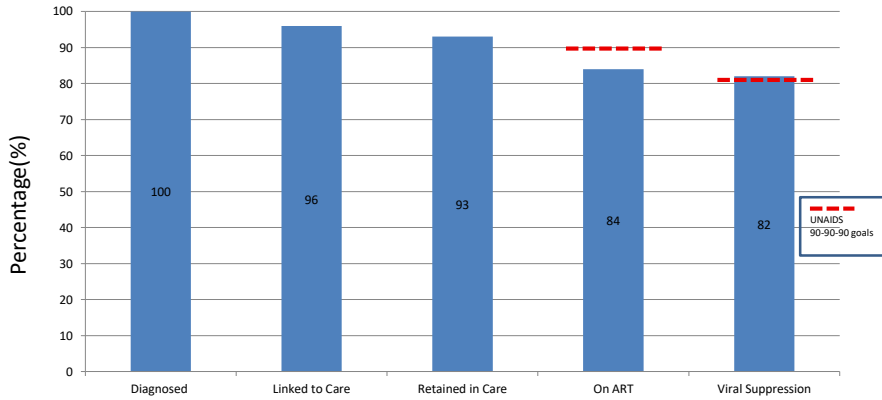
Timing of ART following New Diagnosis, Auckland City Hospital 2015 - If eligible



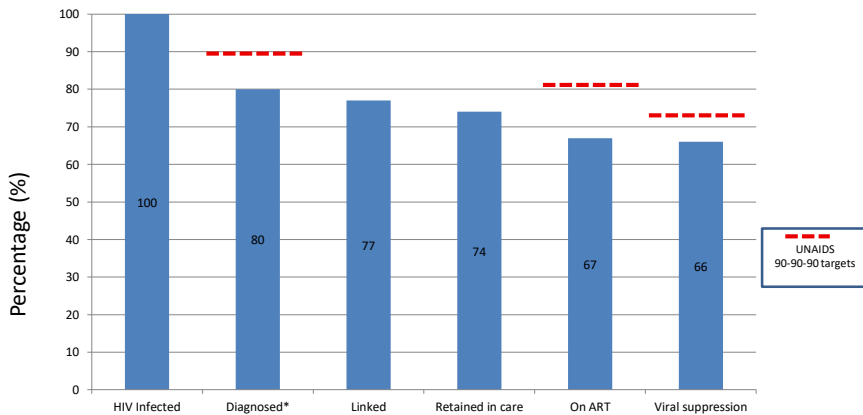
Timing of ART following New Diagnosis, Auckland City Hospital 2015 - If eligible



Cascade of Care, New Diagnoses of HIV 2015, Referred to Auckland City Hospital Infectious Diseases Department

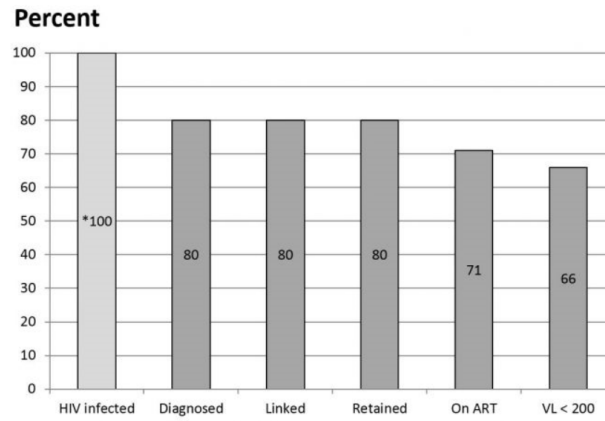


Cascade of Care for People Living with HIV, Auckland region, 2015



*Estimate of those diagnosed with HIV in Auckland from Saxton et al. BMC Public Health 2012, 12: 92

Cascade of Care, Wellington Region



Raymond N, *et al* NZMJ 2016; 129: 41-49

Breakpoints:

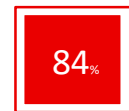
- Major 'break points' in the cascade for us are
 - Diagnosis
 - On ART



diagnosed



on treatment



Developments



- CD4 threshold for prescribing ART in NZ removed - July 1 2017
- New HIV treatment pathway in Auckland ID Department:
 - First specialist appointment within 7 days of referral
 - Medication clinic follow-up at 14-21 days
 - Aiming for 90% of newly diagnosed with HIV on ART within 6 weeks of diagnosis
- AIDS Epidemiology group in Dunedin recently received funding for a National Cascade of Care

Thank you