

# HOLYOAKE

Whenever you're ready.



Services Manager

**Steve  
Papadopoulos**

# Disclosure of Interest

---

No disclosures of interest to declare

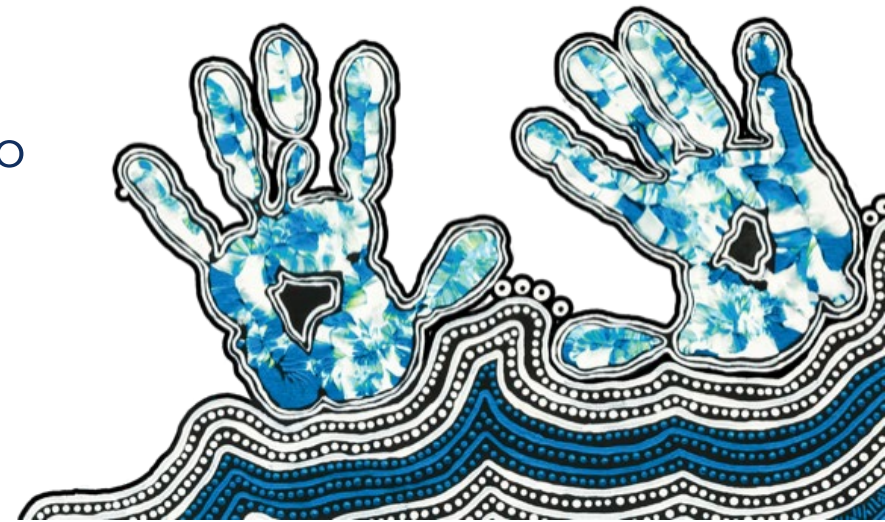
# Acknowledgment of Country

---

I live and work on Ballardong country supporting the people of Ballardong, Willman and Whadjuk boodja.

In the spirit of reconciliation, I respectfully acknowledge the Ngunnawal people on whose lands we all meet today.

I recognise their continuing connection to culture, land and water and pay our respects to Elders past and present and to Aboriginal & Torres Strait Islander people that are with us today.



# Acknowledgement of Lived & Living Experience

---

We acknowledge people in our communities with a lived experience of mental health, suicide ideations, and drug and alcohol concerns as well as those who care for them when they need it and love them fiercely.

We recognise those that we have lost, and the grief and suffering on their families, carers and our communities holistically.

We acknowledge that each person's journey is unique and valued and recognise their adverse experience of stigma, but also their strength and resilience.

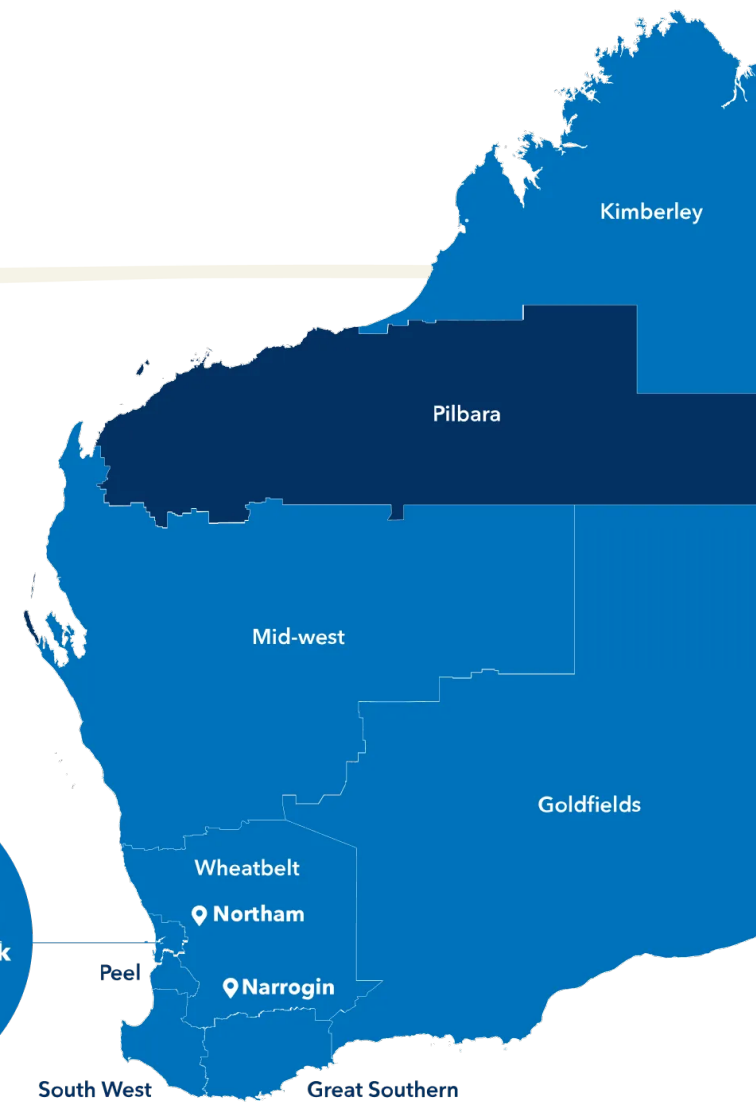


# Consumer Reach

- Counselling and support services
- AOD, Mental Health, Prevention, Education and Training
- Delivered through 3 primary locations and 2 satellite offices
- Supporting 5000 people annually
- Prevention services in all regions except Peel and the Pilbara

## Location Key

- 📍 Offices
- Outreach Services



# Impact last year (July 23 – June 24)

**20,935** occasions of service

**+4,500** individuals received support

**18%** of consumers identified as Aboriginal

**11%** of consumers sought support in relation to a friend or loved one

Services provided in person across **Victoria Park, Midland, Northam, Narrogin** and **Merredin**, as well as via **Outreach** and **Telehealth**







# Pioneering Peer Work

And the  
progress  
to date...



# Holyoake's Integrated Support Team (IST)

- Established in 2017 in response to increase trends of methamphetamine use in Wheatbelt
- Based in Northam
- Funded by WA Primary Health Alliance (WAPHA)
- Consists of:
  - Clinical Case Manager
  - General Practitioner
  - Peer Support Workers

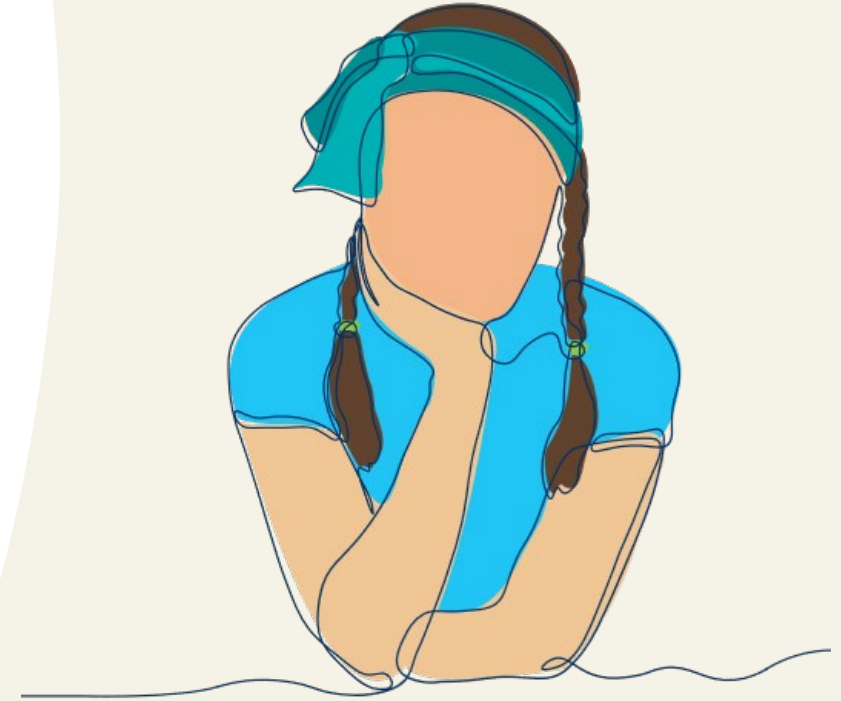




# Role of Peer Support Worker

---

- Mentoring support
- Models Self-Advocacy
- Seeks to increase client engagement
- Inspires hope in client recovery
- Supports Clinical Case Manager and Doctor
- Co-facilitates therapeutic groups



# Role of Clinical Case Manager

---

- Provides counselling support
- Provides intensive case management.
- Liaises with other community services
- Facilitation of therapeutic groups
- Coordinates roles of Doctor and Peer Support Workers





# Our SuPeer Stars

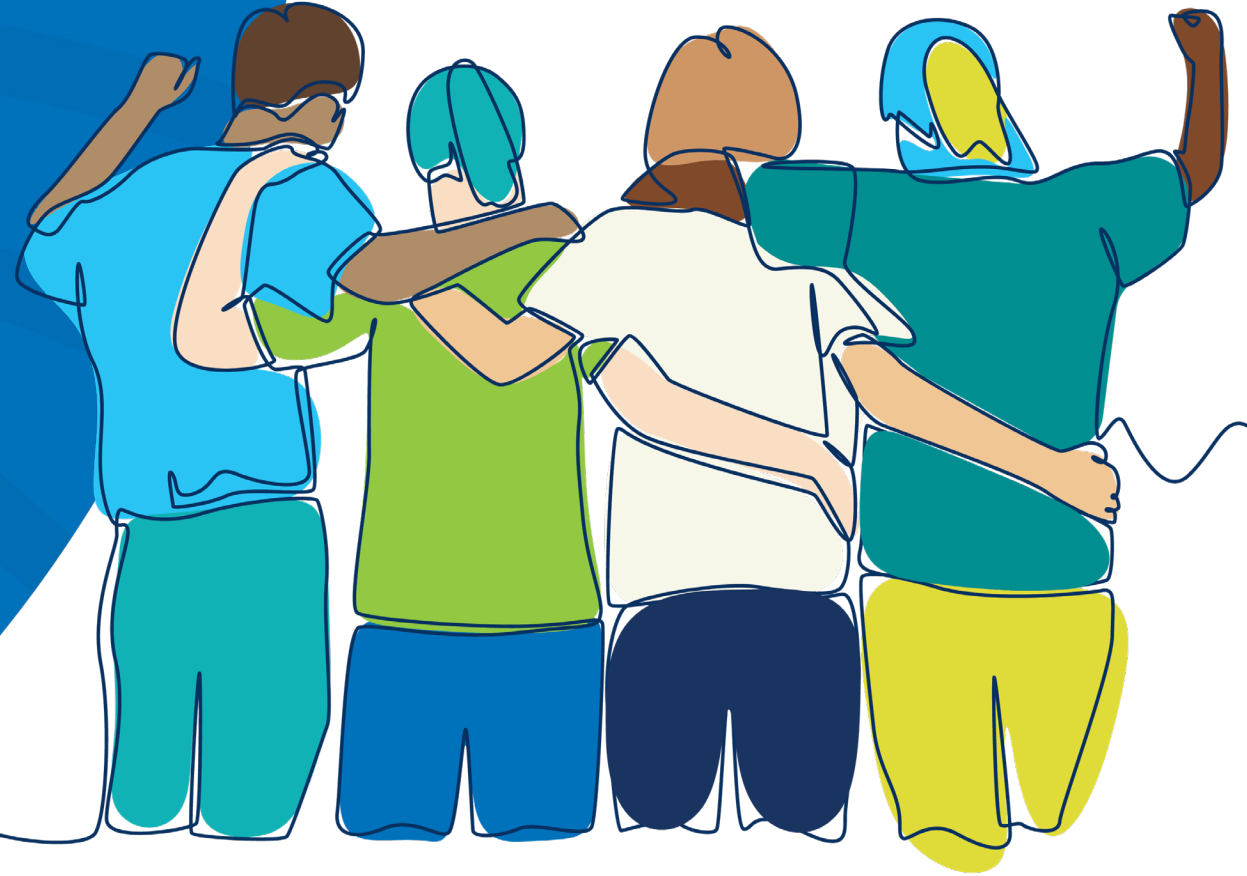


# HOLYOAKE

Whenever you're ready.

## Our Programs

Holistic and evidence-based individual and group counselling





# Peer Work Embedded through Clinical Programs

---

- AOD Counselling & support
  - Adults and Youth
- Support for Significant Others
- Group Programs
- Active Recovery Team
- Diversion Programs
- Justice Programs





# HOLYOAKE

Whenever you're ready.

## Valuing Lived Experience

Peer Support Workers



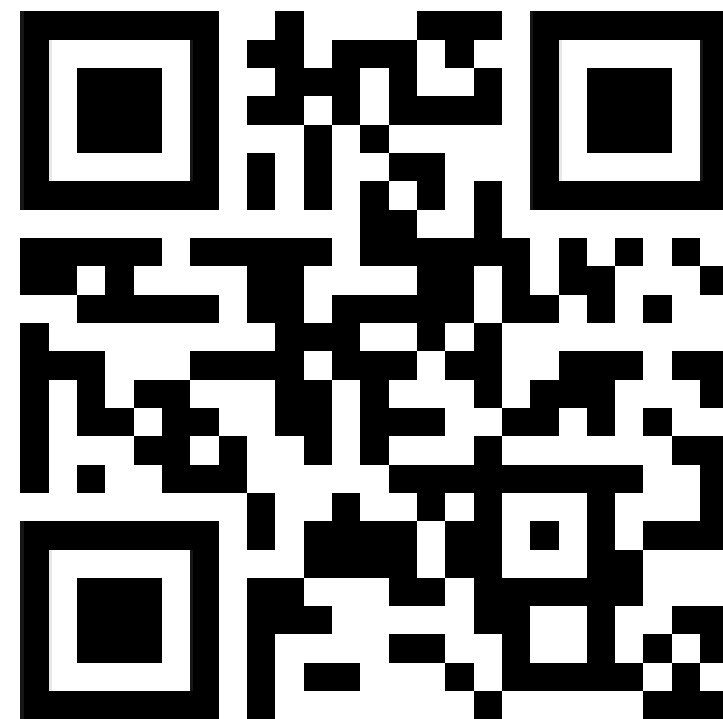
# HOLYOAKE

Whenever you're ready.

[holyoake.org.au](https://holyoake.org.au)



LinkedIn  
facebook  
instagram



[holyoake.org.au](https://holyoake.org.au)