

Disclosures

Olivia Hollingdrake has received research grants or honoraria from

- ViiV Healthcare
- ASHM Health

Acknowledgement of country

We acknowledge the Kaurna people as the Traditional Owners of this country and pay our respects to their Elders past and present. We recognise their continuing connection to land, waters, and culture, and that sovereignty was never ceded.

Always was. Always will be.



HIV peer navigator/peer worker and nursing partnerships in care for people growing older with HIV

A Roundtable Discussion

Assoc Prof Olivia Hollingdrake

School of Nursing and Midwifery – La Trobe University



Recognising the role of people living with HIV in research

Thank you to the people living with HIV who have generously shared their time and experience for the purposes of this – and all - research.

Much of the fight against HIV and AIDS relies upon people living with HIV continuing to put themselves forward and this research and our fight against HIV and AIDS is indebted to those past and present.”

Growing older with HIV

By 2027, the largest population of people living with HIV in Australia will be aged 50–55 years¹

This is **good news** but older people living with HIV may encounter challenges affecting their quality of life ^{2,3}

- Polypharmacy
- Age-related health conditions
- Navigating health and aged-care systems
- End-of-life considerations
- HIV-related stigma
- Social isolation or loneliness
- Gaps in social support resources

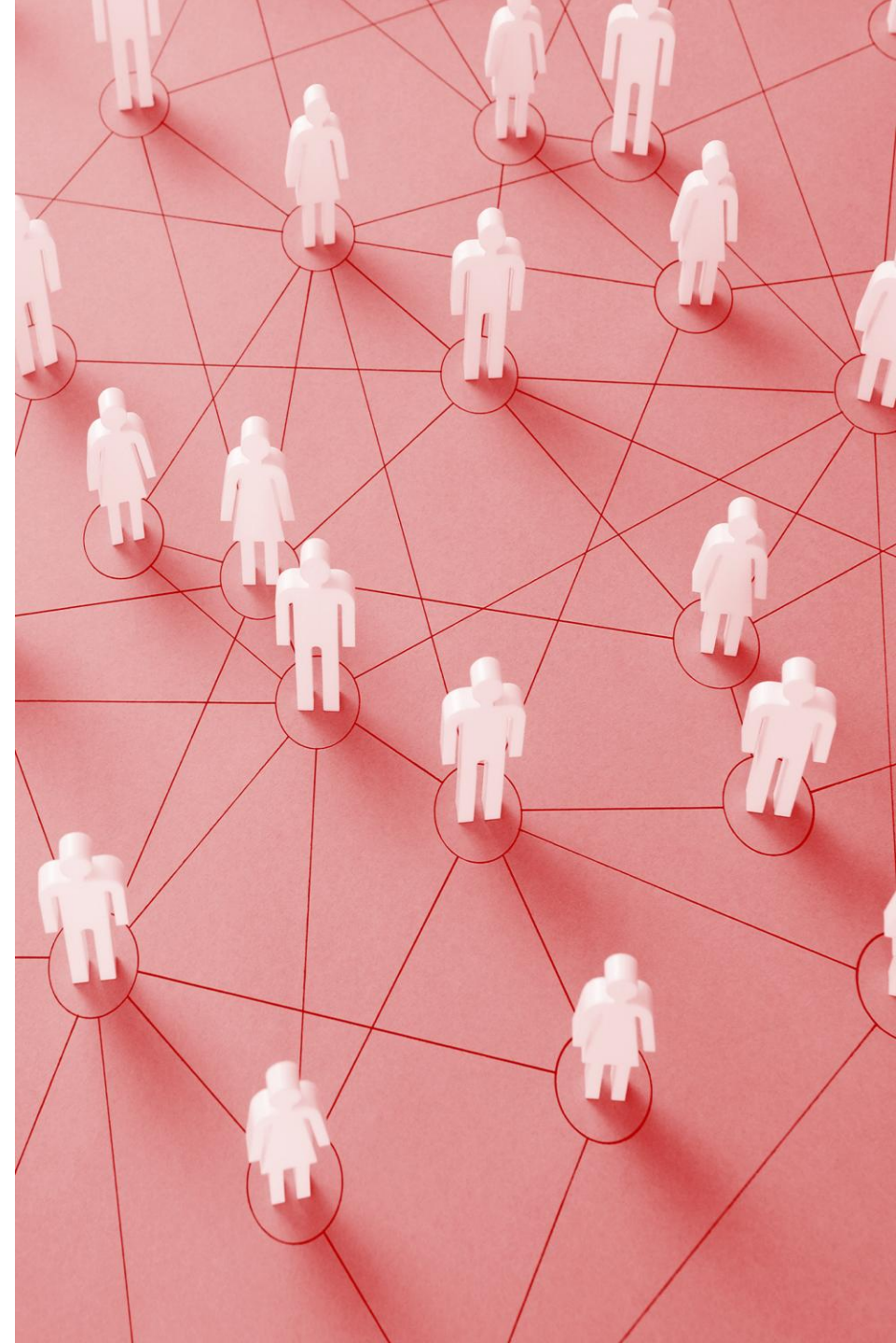


HIV Peer Navigators/Peer workers and Nurses

All play important support roles for older PLHIV

Shared philosophy of person-centred care yet **different**

- Ethos and ways of working
- Expertise, knowledge and training
- Strategies for engaging with PLHIV
- Ways to identify PLHIV needs and priorities
- Organisational systems and governance frameworks
- Positioning inside or outside of clinical settings



Scoping Review

Nurses and peer workers **valued** each other's distinct expertise to enrich care.

Tensions arose from

- Clinical dominance, hierarchical structures and unclear roles.
- Misunderstandings about what peer work is among nurses (and even some peers)!
- Working as 'close strangers', with few opportunities to build genuine relationships⁴.



HIV Peer-Nurse Partnerships Roundtable – May 2025

- HIV peer workers, peer navigators, nurses, researchers, PLHIV (service users), peer program managers.
- Combined expertise in HIV, ageing, stigma, service navigation and peer work.
- Short presentations and case studies stimulated multidisciplinary discussion and collaboration.
- Facilitator and rapporteur helped generate discussion and capture learnings



Kitchen Theme – Why?



Created a **fun and safe** atmosphere for experimenting and sharing ideas

Everyone brings **different ingredients** to the kitchen

Metaphors: Adding spice, simmering with conversation, seasoning with innovation, refining the recipes.

Creating a '**cookbook**' of ingredients and techniques to foster collaboration and communication

Priorities for research, advocacy and education

Learnings

Different Lenses

Valuing different ways of thinking
Respecting diversity of approaches



Role Clarity

Familiarity with nature and scope of work
Understanding roles and organisations



Learnings

Leadership and Coordination

Negotiating care arrangements
Committing to seeking collaboration

Cultures and Power Dynamics

Relating to each other with openness
Addressing hierarchy and power

Enabling trust

Opportunities to connect
Co-designing new models



Collaboration between nurses and peer navigators/peer workers provides clear benefits for health service users



Set up the right conditions for connection and reconnection

Ask yourself who is best placed to work with this client on a specific need or continue a conversation?

Consider the role of relational work to build rapport – peer workers are experts at this

Is there anything important that people should know about your role to foster trust? E.g. practice standards, code of conduct, communication channels

Research translation and next steps

Strengthening HIV clinical, community and peer partnerships

Continue developing models to embed peer navigation in clinical sites

Inform HIV and Ageing: The New Frontier version 2.0

Investigating tools that can support and improve collaboration and person-centred care by providing a 'common language' across different sectors (e.g. PozQoL)



Thank you to our research advisory group and Roundtable facilitators



- **Brent Clifton**
- **Chris Howard**
- **John Rule**
- **Olivia Hollingdrake**
- **Judith Dean**
- **Emma Paino**
- **Lisa Wojciechowski**
- **Jo River**
- **Cherie Bennet**
- **Graham Brown**
- **Jae Condon**
- **Lucy Stackpool-Moore**
- **Hiero Badge**

Questions?

References

1. The Kirby Institute (2024). HIV, viral hepatitis and sexually transmissible infections in Australia Annual Surveillance Report Surry Hills NSW UNSW.
2. Erdbeer G, Sabranski M, Sonntag I, Stoehr A, Horst H-A, Plettenberg A, Schewe K, Unger S, Stellbrink H-J, Fenske S: Everything fine so far? Physical and mental health in HIV-infected patients with virological success and long-term exposure to antiretroviral therapy. *Journal of the International AIDS Society* 2014, 17(4Suppl 3).
3. Lazarus JV, Safreed-Harmon K, Barton SE, Costagliola D, Dedes N, del Amo Valero J, Gatell JM, Baptista-Leite R, Mendão L, Porter K: Beyond viral suppression of HIV—the new quality of life frontier. *BMC medicine* 2016, 14(1):94.
4. Hollingdrake, O., Paino, E, Warzywoda, S, Philip, AA, Dean, J, Howard, C, River, J. (2025). "Tensions and Opportunities in Nurse, Midwife, and Peer Worker Collaborations in Healthcare Delivery: A Scoping Review and Narrative Synthesis." *J Adv Nurs*.(05 March) <https://doi-org.ez.library.latrobe.edu.au/10.1111/jan.16884>