

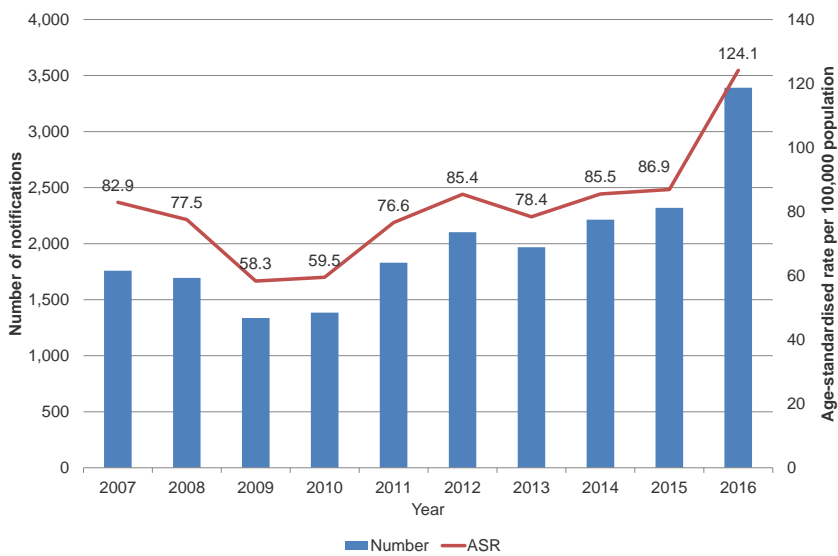


Gonorrhoea increases among non-Aboriginal heterosexual people in metropolitan Western Australia: fact or artefact?

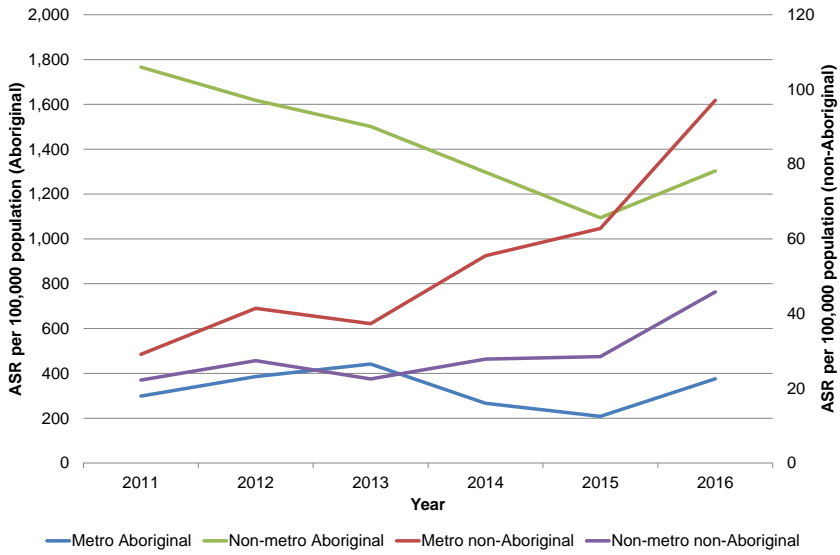
Carolien Giele, Kellie Mitchell, Donna Mak, Gary Dowse
 Communicable Disease Control Directorate
 Western Australian Department of Health

better health • better care • better value

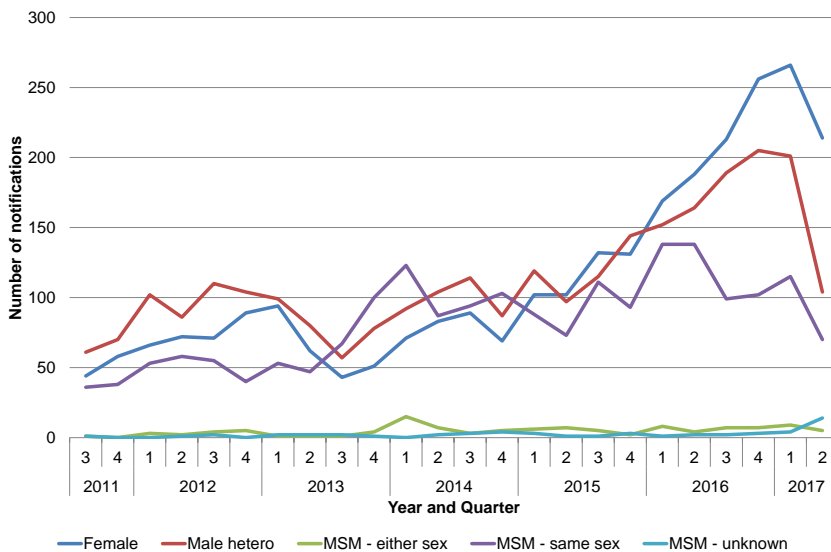
Number and rate of gonorrhoea notifications, WA, 2007 to 2016



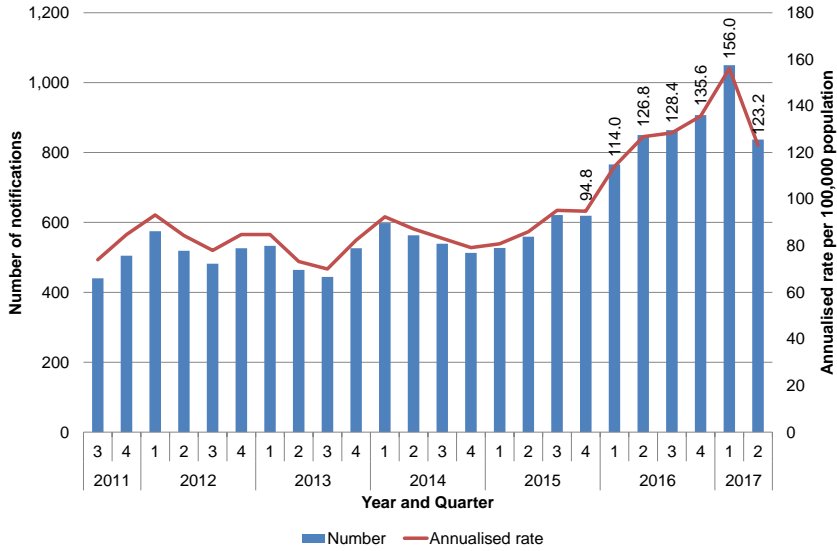
Rate of gonorrhoea notifications by area and Aboriginality, WA, 2011 to 2016



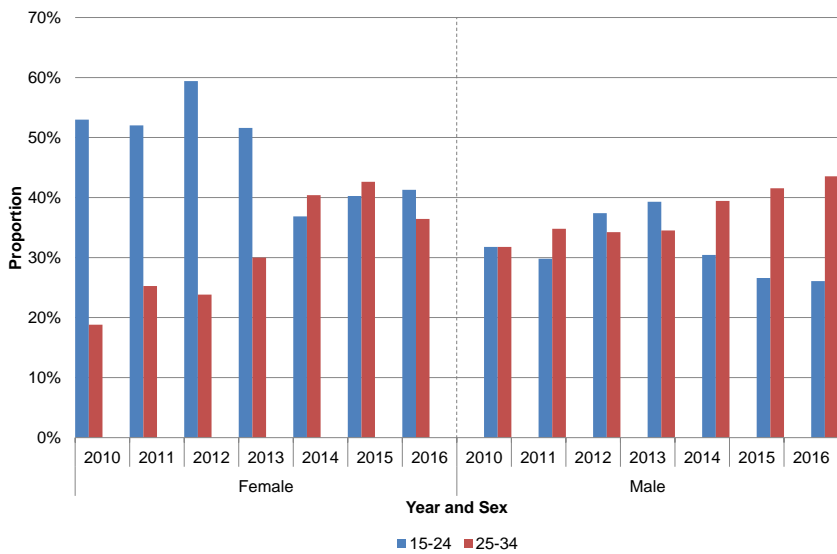
Number of gonorrhoea notifications by sexual preference and quarter, Perth metropolitan area, WA, 2011 to 2017 YTD



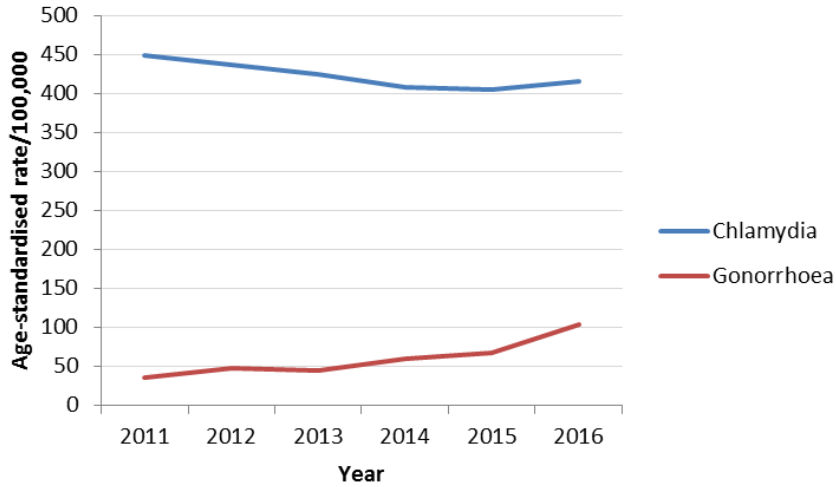
Number and rate of gonorrhoea notifications by quarter, WA, 2011 to 2017 YTD



Proportion of gonorrhoea notifications by sex and age group, Perth metropolitan area, WA, 2010 to 2016

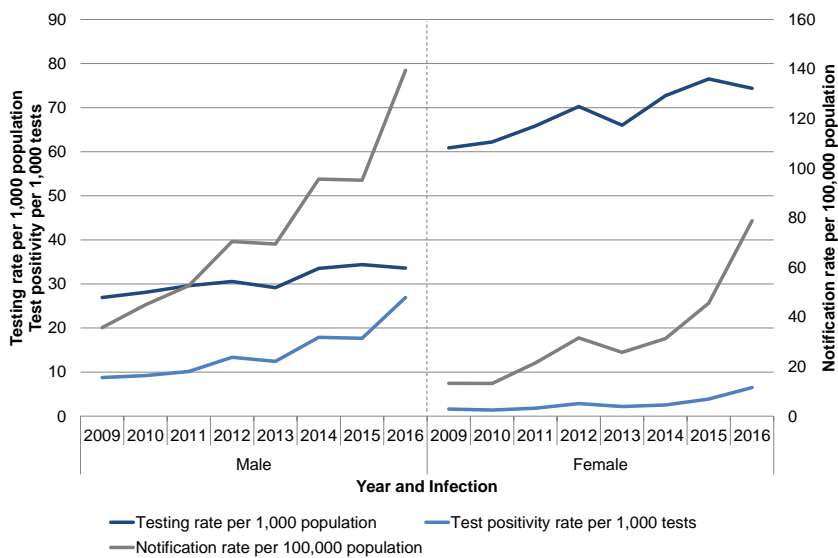


Rate of gonorrhoea and chlamydia notifications in the Perth metropolitan area, WA, 2011 to 2016



Dual testing in all WA pathology labs since before 2011

Gonorrhoea testing, notification and test positivity rate by sex, Perth metropolitan area, WA, 2009 to 2016



Conclusion

- Increase is real, not artefact
- Reasons for increase being investigated to inform intervention decisions

Acknowledgements

We wish to thank diagnosing laboratories, doctors, practice nurses and public and community health nurses for providing the information to enable the ongoing monitoring of gonorrhoea infections in WA