

Odyssey Multicultural Transitions Program

Challenges and Resilience of People from CALD Background Transitioning from Custody to Community

Contributing Authors: Benjamin Ondu (Case Manager, Odyssey Multicultural Programs), Teguh Syahbahar (Manager, Odyssey Multicultural Programs) and Nirekha De Silva (Research Officer, Odyssey Multicultural Programs)

OVERVIEW

Transitions is a unique program designed to support Culturally and Linguistically Diverse (CALD) individuals in custody to reintegrate into the community successfully. Transitioning from a custodial setting to the community comes with many challenges especially for people from CALD background.

KEY CHALLENGES

- Trauma from migration experiences
- Mental health conditions
- Stigma and discrimination
- Unemployment
- Limited English proficiency
- Navigating community support systems

“During my parole and conditional release process, the support I received in securing accommodation was substantial. It was crucial for my successful transition to stable living conditions.”
Client (Arabic Background)

PROGRAM DESCRIPTION

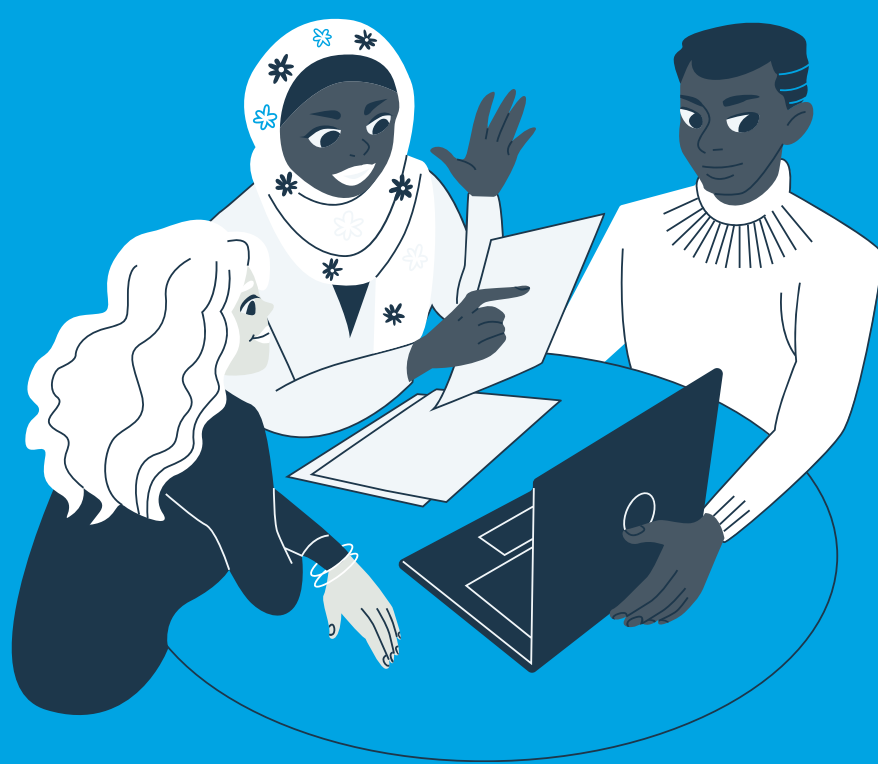
Support community reintegration for people of CALD backgrounds in custody influenced by AoD.

KEY COMPONENTS

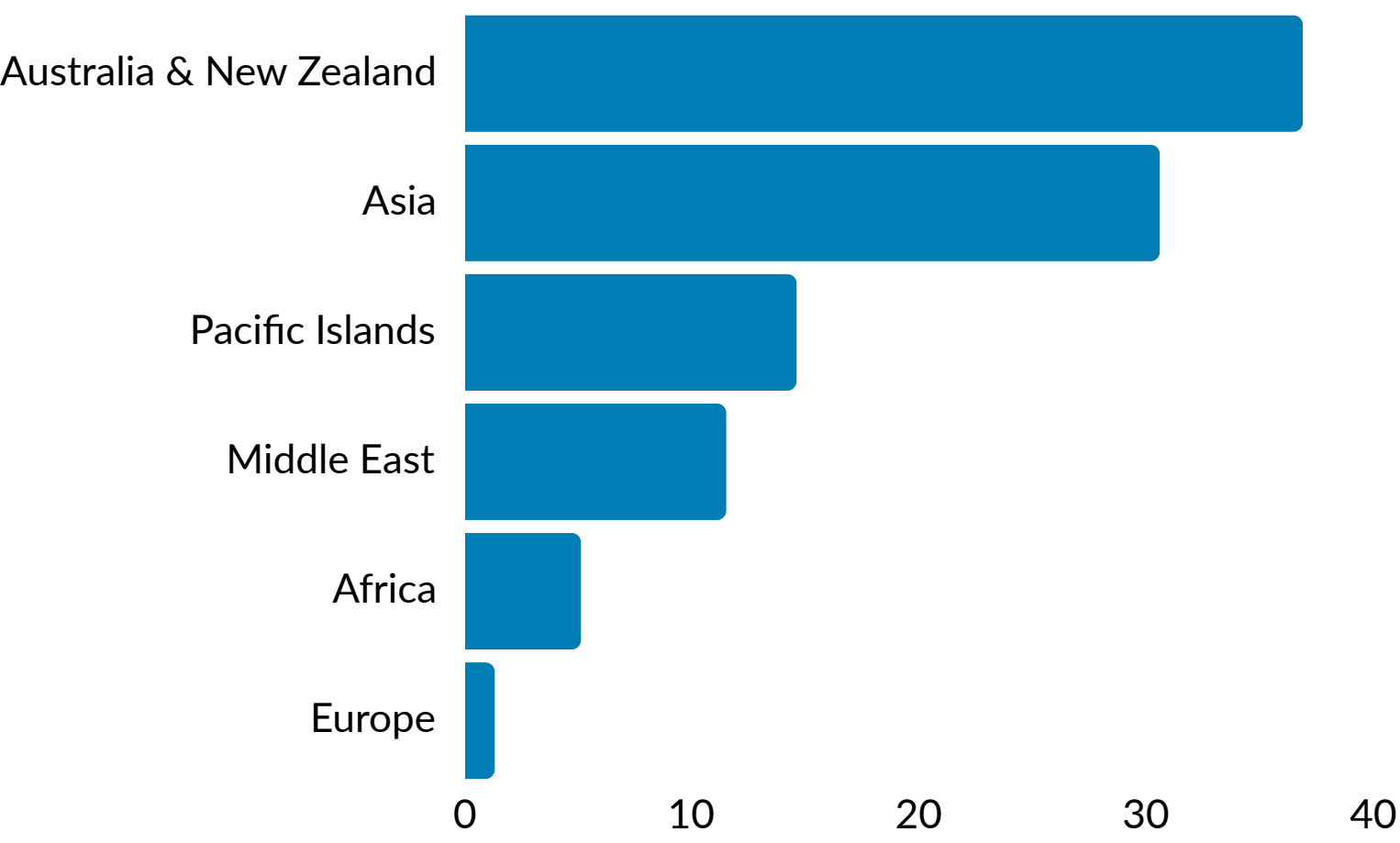
- Pre and post custodial support
- Culturally responsive practices
- Equitable service access
- Holistic wellbeing

EXPECTED OUTCOMES

- Reduced recidivism
- Improved AoD service access
- Community wellbeing



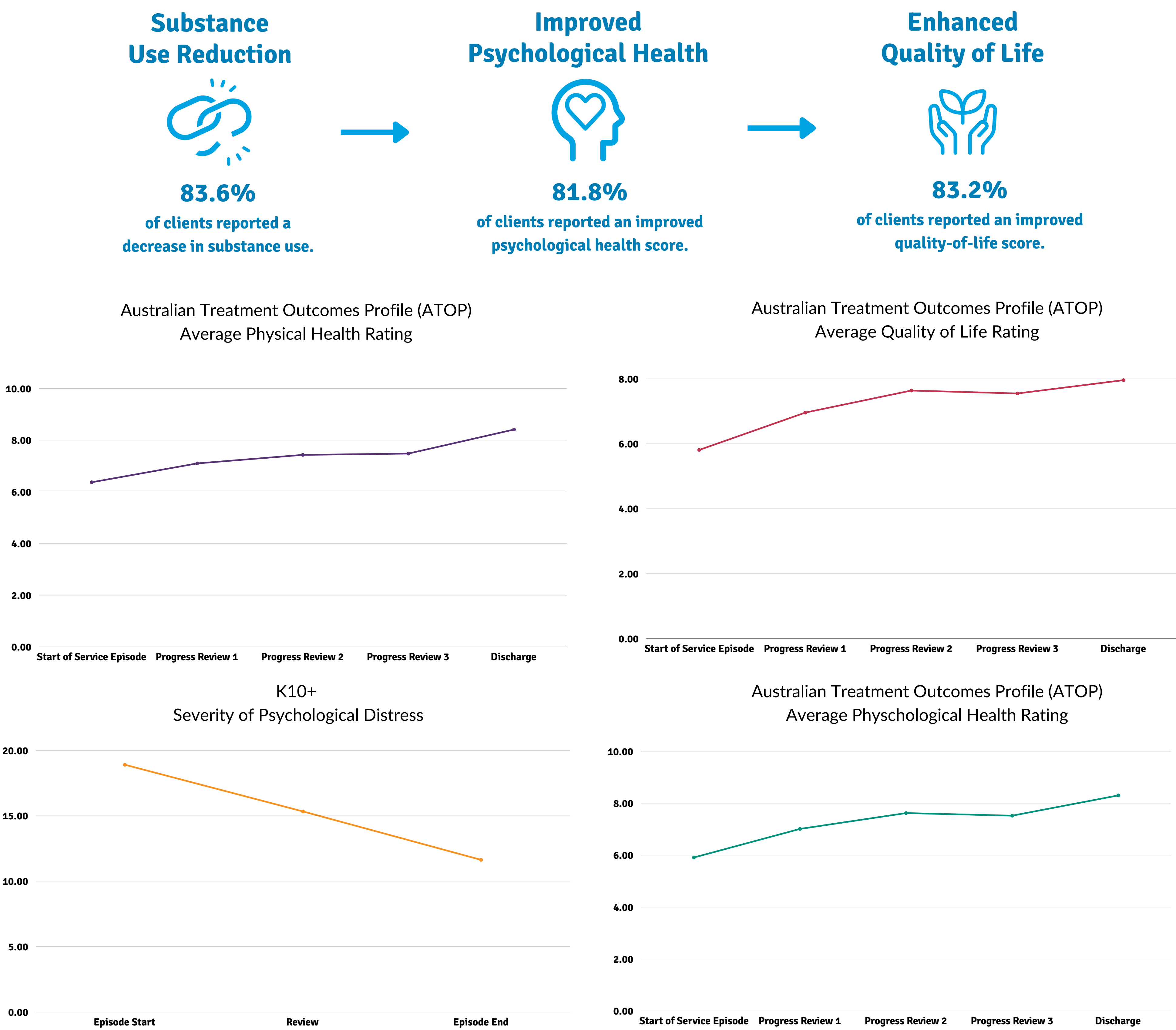
COUNTRY OF BIRTH



Transitions program supports all Culturally and Linguistically Diverse clients. This chart shows the place of birth of the clients we are serving from July 2022 – June 2024. Although there are high percentage of clients with Australia being the country of birth, still according to CALD definition they are CALD individuals.



RESULTS/OUTCOMES



SCAN TO LEARN MORE ABOUT ODYSSEY MULTICULTURAL PROGRAMS



CONCLUSION

Odyssey Multicultural Transitions Program has proven to be a successful community integration program for CALD (Cultural and Linguistically Diverse) People exiting a custodial setting. The program acknowledges the importance of culture in case management intervention. The program housed clients through the supported accommodation program, provided relapse prevention programs to address reoffending and AOD misuse, referred clients for financial and food assistance, referred clients for job opportunities, medical assistance, family support and reintegration, supported clients to get necessary documentation and legal support. All of this support has proven to be a catalyst in improving the quality of life of the participants.