



Opportunities and challenges for PrEP in Asia

Nuttawut Teachatanawat
Program Coordinator

PREVENTION | The Thai Red Cross AIDS Research Centre

PrEP in Asia and the Pacific Satellite Session
2018 Australian HIV&AIDS Conference, 24th-26th September, 2018, Sydney, Australia

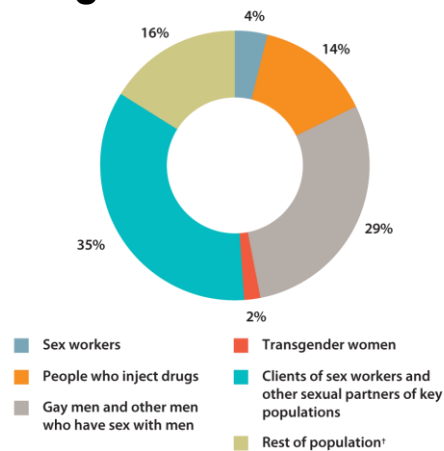
Disclaimer: This presentation is the Intellectual Property of Thai Red Cross AIDS Research Centre. It is intended for the use of meetings only. No part of this presentation may be reproduced, republished, distributed, displayed, transmitted or otherwise exploited in any form or by any means, electronic or mechanical, including photocopying, recording, or any information storage and retrieval system, without the prior direct permission in writing from Thai Red Cross AIDS Research Centre.

PREVENTION | WHERE INNOVATIONS MEET IMPLEMENTATION

Join the Conversation @ASHMMEDIA #HIVAUS18

PrEP in the Asia-Pacific region: who need it?

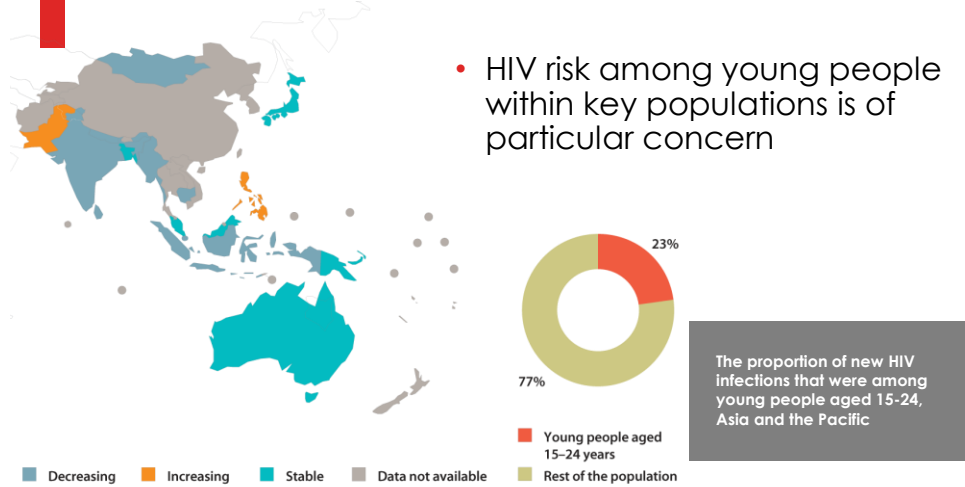
- HIV epidemics in the Asia-Pacific region are concentrated among key populations and their sexual partners, which account for 84% of new HIV infection
- Men who have sex with men (MSM) accounted for an estimated 29% of new HIV infection in the region and accounted for over half of new HIV infection in Thailand



†Individuals in this category did not report any HIV-related risk behaviour.
Source: UNAIDS special analysis, 2018.

Join the Conversation @ASHMMEDIA #HIVAUS18

PrEP in the Asia-Pacific region: who need it?



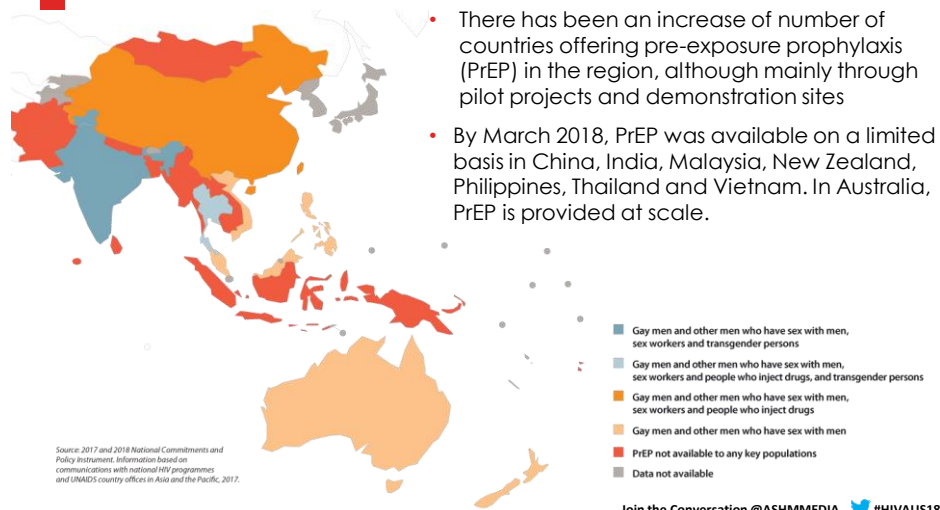
Source: UNAIDS 2018 estimates.

Join the Conversation @ASHMMEDIA #HIVAUS18

2018 AUSTRALASIAN HIV&AIDS CONFERENCE

www.hivaidconference2018.com.au

Availability of pre-exposure prophylaxis for key populations through pilot projects and demonstration sites, Asia and the Pacific (March 2018)



Join the Conversation @ASHMMEDIA #HIVAUS18

2018 AUSTRALASIAN HIV&AIDS CONFERENCE

www.hivaidconference2018.com.au

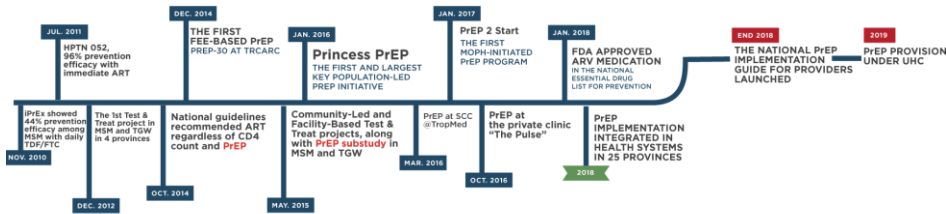
Thailand's PrEP Programs



The Princess PrEP

The first and largest key population-led PrEP initiative under the royal patronage

- Use Thai Red Cross public donation fund and USAID LINKAGES funding to scale-up KP-led PrEP services in CBOs
- Aims to serve 1,000 PrEP users per year for 3 years
- Started with MSM and TGW, being expanded to FSW and PWID
- Will focus more on 15-19 years old in FY2018



Join the Conversation @ASHMMEDIA #HIVAUS18

2018 AUSTRALASIAN HIV&AIDS CONFERENCE

www.hivaidconference2018.com.au

Thailand's PrEP Programs



- **PrEP Substudy** is PrEP implementation research funded by USAID LINKAGES and CDC KPIS funds
- **PrEP 30:** Fee-for-Service PrEP
- **PrEP 2 Start:** Facility-based PrEP by MOPH and technically supported by CDC
- **Key population-Led PrEP (Princess PrEP)** funded by USAID linkages and TRCARC

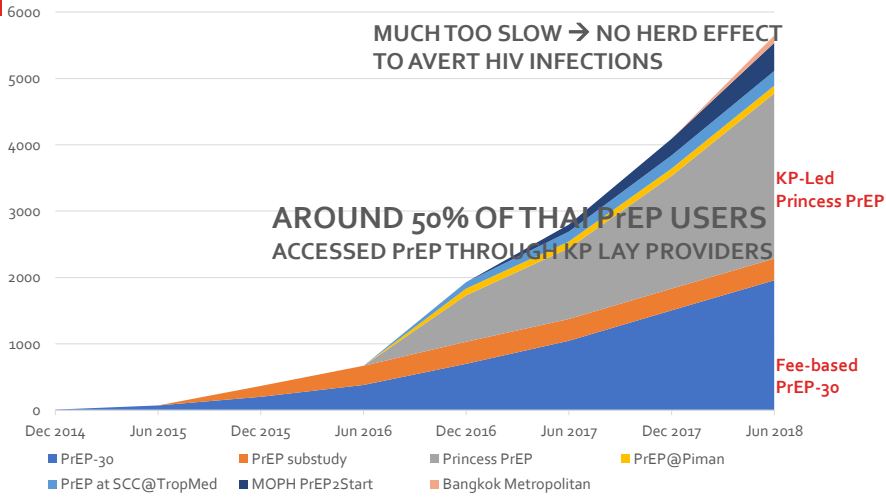
Join the Conversation @ASHMMEDIA #HIVAUS18

2018 AUSTRALASIAN HIV&AIDS CONFERENCE

www.hivaidconference2018.com.au

Thailand's PrEP Programs

Cumulative number of PrEP users

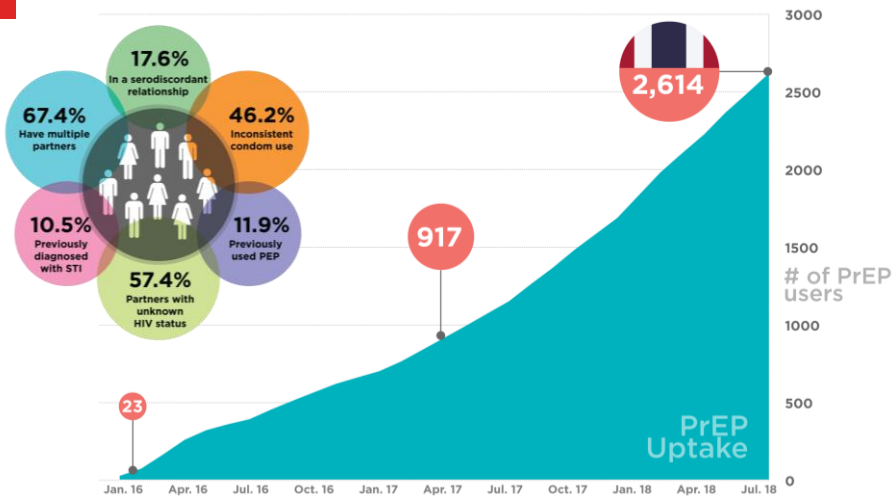


Join the Conversation @ASHMMEDIA #HIVAUS18

Source: Estimated number of PrEP users in Thailand by June 2018 (courtesy of each program lead)

2018 AUSTRALASIAN HIV&AIDS CONFERENCE

Thailand Princess PrEP Program: KP-led PrEP delivered by trained KP lay providers

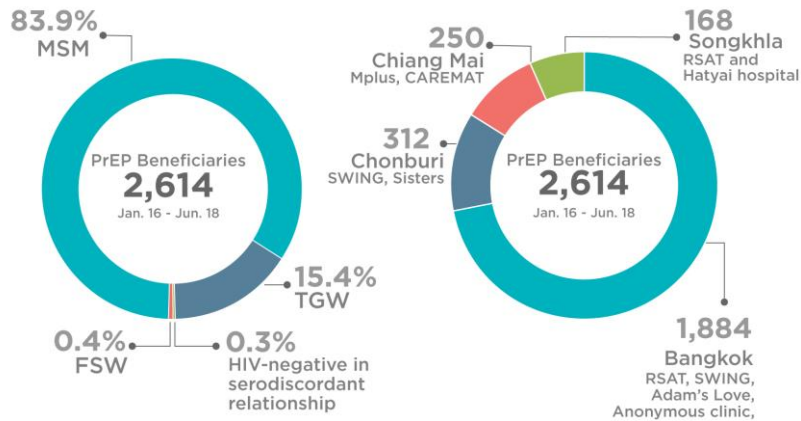


Join the Conversation @ASHMMEDIA #HIVAUS18

2018 AUSTRALASIAN HIV&AIDS CONFERENCE

www.hivaidsconference2018.com.au

Thailand Princess PrEP Program: KP-led PrEP delivered by trained KP lay providers

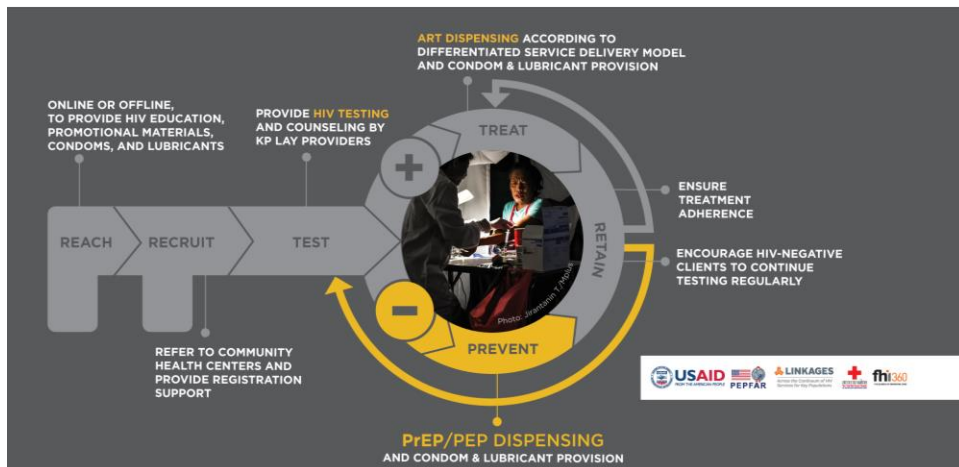


Join the Conversation @ASHMMEDIA #HIVAUS18

2018 AUSTRALASIAN HIV&AIDS CONFERENCE

www.hivaldsconference2018.com.au

PrEP Dispensing to KPs by KP Lay Providers

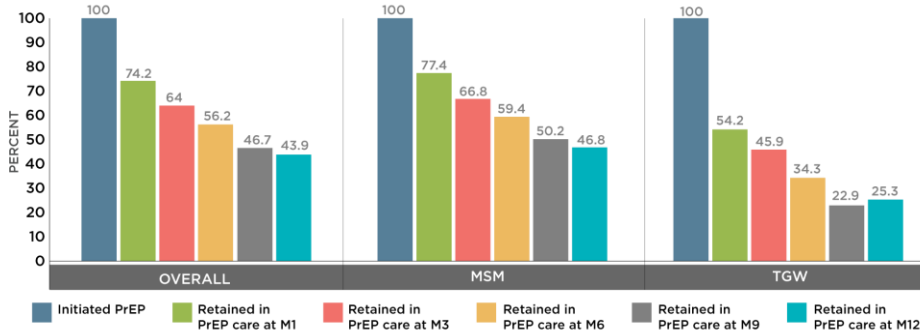


Join the Conversation @ASHMMEDIA #HIVAUS18

2018 AUSTRALASIAN HIV&AIDS CONFERENCE

www.hivaldsconference2018.com.au

Retention in the Princess PrEP by clinic visit and by gender



Join the Conversation @ASHMMEDIA #HIVAUS18

2018 AUSTRALASIAN HIV&AIDS CONFERENCE

www.hivaidconference2018.com.au

Factors associated with adherence and retention in the Princess PrEP program

Covariates	aOR	95% CI	P-value
Adherence			
Age			
Age < 25 years	1	ref	
Age > 25 years	1.96	1.46-2.62	0.007
Gender			
Transgender women	1		
MSM	3.49	2.29-5.31	<0.001
Education			
Less than bachelor degree			
Bachelor degree and above	2.30	1.72-3.08	0.04
Retention			
Gender			
Transgender women	1	ref	
MSM	1.83	1.24-2.69	0.005
Age at first sexual intercourse			
<18 years	1	ref	
≥18 years	1.42	1.08-1.86	0.048

Join the Conversation @ASHMMEDIA #HIVAUS18

2018 AUSTRALASIAN HIV&AIDS CONFERENCE

www.hivaidconference2018.com.au

Challenges of PrEP program in Thailand

- Slow rate of PrEP scale-up to curb the epidemic. For example, only 5% of high-risk MSM are currently on PrEP after 3 years.
- Low proportion of adolescent MSM and TGW accessing PrEP; through KPLHS, those aged 15-19 represented only 2% of PrEP users in 2017.
- Testing access and who can provide testing : self-testing, lay- and KP-led testing.
- Legal and policy barriers to legally allow trained-lay providers to dispense PrEP outside of demonstration and research projects.
- Retention in PrEP care and PrEP adherence; particularly among TGW, young key populations and those who have low education
- Low risk perception – makes it difficult to identify those at most risk
- Introduction of on-demand PrEP among KP communities
- The need for better understanding of seasons of PrEP

Join the Conversation @ASHMMEDIA #HIVAUS18

2018 AUSTRALASIAN HIV&AIDS CONFERENCE

www.hivaldsconference2018.com.au

Acknowledgements



Join the Conversation @ASHMMEDIA #HIVAUS18

2018 AUSTRALASIAN HIV&AIDS CONFERENCE

www.hivaldsconference2018.com.au



Thank you

Join the Conversation @ASHMMEDIA  #HIVAUS18

2018 AUSTRALASIAN HIV&AIDS CONFERENCE

www.hivaldsconference2018.com.au