



Queensland Positive People
INCLUSIVE, INNOVATIVE HIV SERVICES

Supporting Primary Health by Improving Engagement for Unique
Populations in HIV Treatment and Care

CHRIS HOWARD
LIFE+ PROGRAM MANAGER



Acknowledgments

- People Living with HIV who have been involved with this work
- Peer Navigators and clients of the Peer Navigation program
- Peer Navigation Team Leader and Medicare Ineligible Peer Navigator - Satrio Nindyo Istiko (Tiko)
- Positive Living British Columbia – Glen Bradford
- Funders: Queensland Health Department/ViiV Healthcare
HIV Foundation Queensland



Queensland Positive People
since 1989

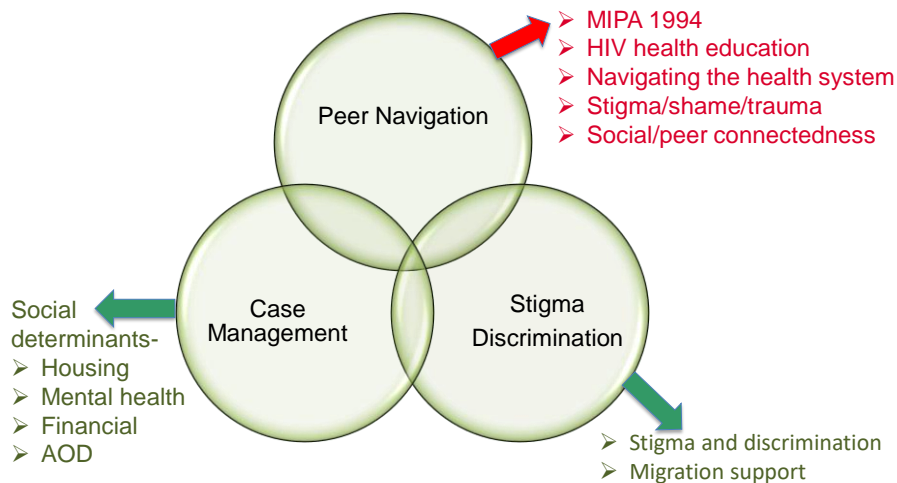
Barriers to engagement in HIV treatment – diverse communities

- Low levels of HIV literacy
- Confidentiality around diagnosis
- Shame and trauma
- Internalised/anticipated stigma
- Understanding and navigating the health system
- Social determinants (housing/financial/mental health)



Queensland Positive People
since 1989

Life+ Integrated model of care



Queensland Positive People
since 1989

Peer Navigation Program (PNP)

- Early intervention for newly diagnosed/reengaging or at risk of falling out of care
- Reduce the time between diagnosis and treatment uptake
- Support the development of self management skills
- Improve HIV health literacy
- Support adherence and retention in care



Queensland Positive People
since 1989

What do Peer Navigators do?

- Provide HIV education – modules
- Social/emotional support around diagnosis
- Practical support to navigate the health system
- Provide culturally appropriate, flexible and adaptive support



Queensland Positive People
since 1989

Who are Peer Navigators?

- People living with HIV
- Shared and lived experience on multiple levels with clients
- Members of the diverse communities they support (African, Asian, Indigenous, Caucasian)
- Professionally peer trained and peer supervised payed employees



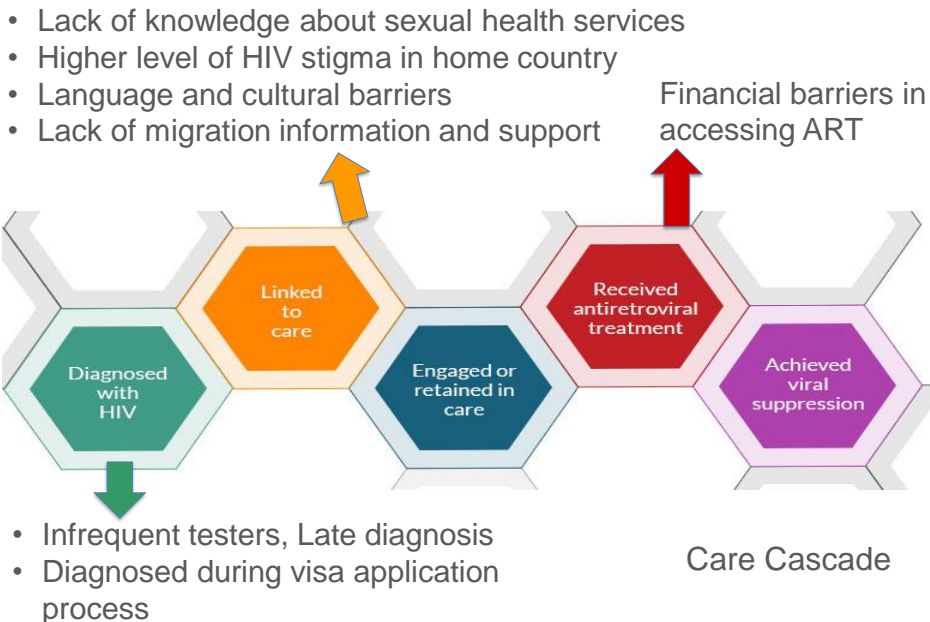
Queensland Positive People
since 1989

Medicare Ineligible Peer Navigation

- ❑ Two year project July 2016- June 2018
- ❑ Funded by HIVFQ
- ❑ Increase the number of Medicare ineligible PLHIV accessing HIV-related services and treatment
- ❑ Facilitate early treatment uptake for newly diagnosed
- ❑ Increase the individual health literacy and self-management



Queensland Positive People
since 1989



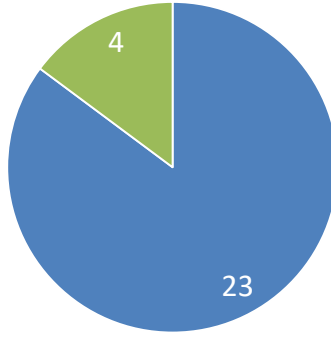
m

Queensland Positive People
since 1989



Medicare Ineligible Peer Navigation

TIME OF DIAGNOSIS



■ < 2 years ■ > 2 years

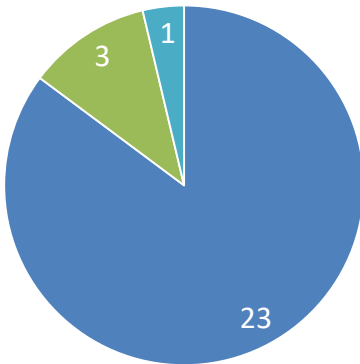


Queensland Positive People since 1989



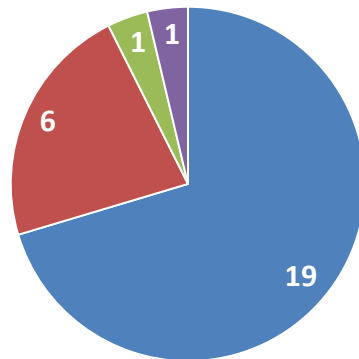
Medicare Ineligible Peer Navigation

GENDER



■ Cis Male ■ Cis Female ■ Transgender Female

SEXUAL ORIENTATION



■ Gay ■ Heterosexual ■ Men who have sex with men ■ Unsure



Queensland Positive People since 1989



Medicare Ineligible Peer Navigation

COUNTRY OF ORIGIN



- Vietnam
- Malaysia
- Indonesia
- Taiwan
- Colombia
- Germany
- Zimbabwe
- Angola
- China
- PNG
- Mexico
- Brazil

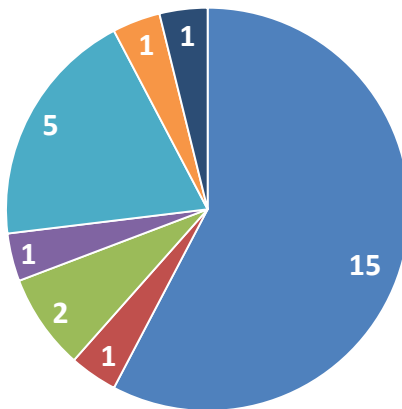


Queensland Positive People since 1989



Medicare Ineligible Peer Navigation

VISA TYPE



- Student visa
- Working visa
- Working holiday visa
- Holiday visa
- Bridging visa (for Protection Visa)
- Bridging visa (for Employer Nominated Visa)
- Dependent of person on student visa

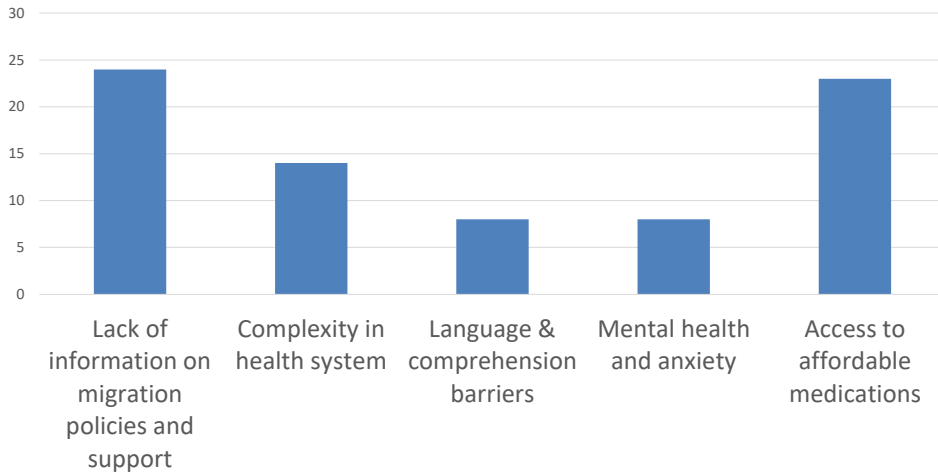


Queensland Positive People since 1989



Medicare Ineligible Peer Navigation

IDENTIFIED BARRIERS



Queensland Positive People
since 1989



Participant Feedback

- 'A real comfort in having access to people that are supportive, non-judgmental, and easy going. Confirmation on what information is true and not true was critical for me to handle my situation'*
- 'More knowledgeable on disclosure. Confidence level is better'*
- 'I have a better understanding on how to source my medications as a traveler with no Medicare'*



Queensland Positive People
since 1989

Outcomes

- 100% of participants linked into HIV care and all commenced ARV's within 3 months
- HIV literacy is being evaluated by University of Queensland as part of the broader Peer Navigation Evaluation (due to finish in December 2018)
- Peer Navigator was a valuable information resource for clinicians (ASHM/QPP)
- Referral source- GP/Rapid/Self referral



Queensland Positive People
since 1989

How do we increase engagement with Primary Health?

- Peer Navigators support primary health by addressing knowledge, emotional and broader support gaps
- Peer Navigators can inform clinicians about intersection of needs (eg visas, housing etc)
- Important to include Peer Navigators as part of the health care team to support diverse aspects of care to enhance self management



Queensland Positive People
since 1989

How do we increase engagement with Primary Health?

- Engage GP's through clinical software (Healthshare/Best Practice/Medical Director/Genie)
- HIV is a notifiable condition – work closely with public health units and build GP referral networks
- Building GP confidence and trust in services like Peer Navigation available to support patients
- Strengthening shared care arrangements between GP's and HIV specialists and Peer Navigators



Queensland Positive People
since 1989

Key Messages

- Peer Navigation is an effective strategy for engaging diverse communities in HIV treatment and care
- Primary health engagement with Peer Navigation services is important to help achieve patient outcomes across a range of areas (clinical, knowledge, social)
- Build confidence in primary health to trust in services like Peer Navigation to support people from diverse communities



Queensland Positive
People
since 1989