

# Development of a rapid point-of-care test for liver damage

---

Lilian Hor

15th Australasian Viral Hepatitis Conference (VH2025)

8 August 2025

**Disclosure:**

Lilian is an inventor on a patent related to the test discussed in this presentation





# ALT and the Burnet ALT Test

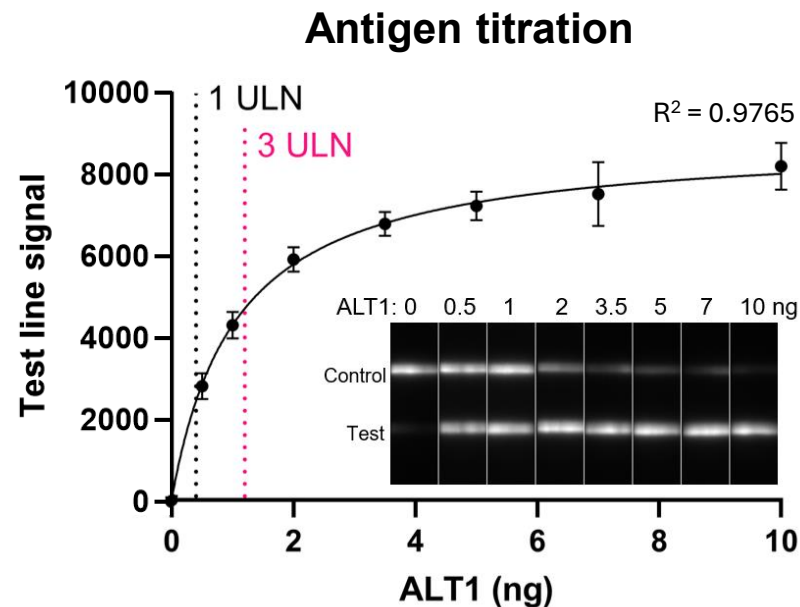
- **Alanine transaminase (ALT)** is a **key liver biomarker** and is measured in liver function test (LFT) panel (venous blood draw).
- ALT levels are:
  - used in diagnosing and monitoring hepatitis;
  - increased in drug induced liver toxicity.
- Burnet Diagnostic Initiative (BDI) has developed a **lateral flow test** to measure **ALT1** using novel antibodies.
- The Burnet ALT test is housed in the **integrated** AtomoRapid™ Pascal cassette.



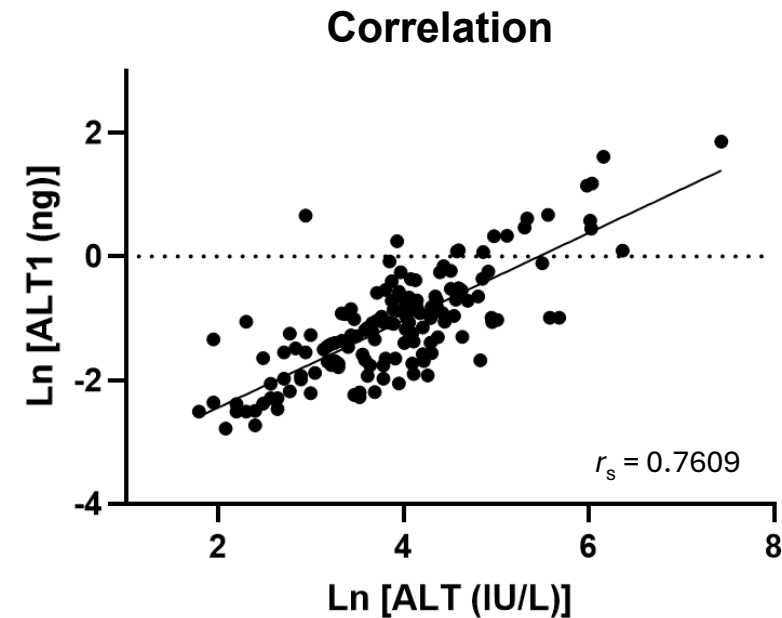


# Burnet ALT Test Performance

- Good range of detection when titrating recombinant ALT1 in venous whole blood.
- Strong correlation with laboratory ALT tests results when tested using 150 reconstituted whole blood samples from participants with various liver conditions (HBV, HCV, MALFD, alcohol).



ULN = 40 IU/L. Approx. equivalence of 1 and 3 ULN is indicated.



## Future directions:

Clinical studies are currently underway to validate the test in different patient cohorts.

# Summary

- We have successfully developed a quantitative integrated lateral flow assay to detect antigenic ALT1 in finger-prick blood.
- The convenient, easy-to-use test is amenable to frequent ALT monitoring in both healthcare practitioner supervised settings and at-home self-testing.
- The Burnet ALT test may be used in conjunction with other markers to help diagnose and monitor hepatitis and other liver conditions.

# Contact details

**Lilian Hor (Burnet Diagnostics Initiative)**

[lilian.hor@burnet.edu.au](mailto:lilian.hor@burnet.edu.au)

## Acknowledgments:



# Key actions and takeaways



Consider how this test could:

1. Support increased testing of key populations not currently engaged in care to monitor liver health in viral hepatitis (and other conditions).
2. Be implemented as a new tool for triaging patients onto treatment who have elevated ALT.
3. Support triple elimination.

## Contact details

**Lilian Hor (Burnet Diagnostics Initiative)**

[lilian.hor@burnet.edu.au](mailto:lilian.hor@burnet.edu.au)

## Acknowledgments:

