



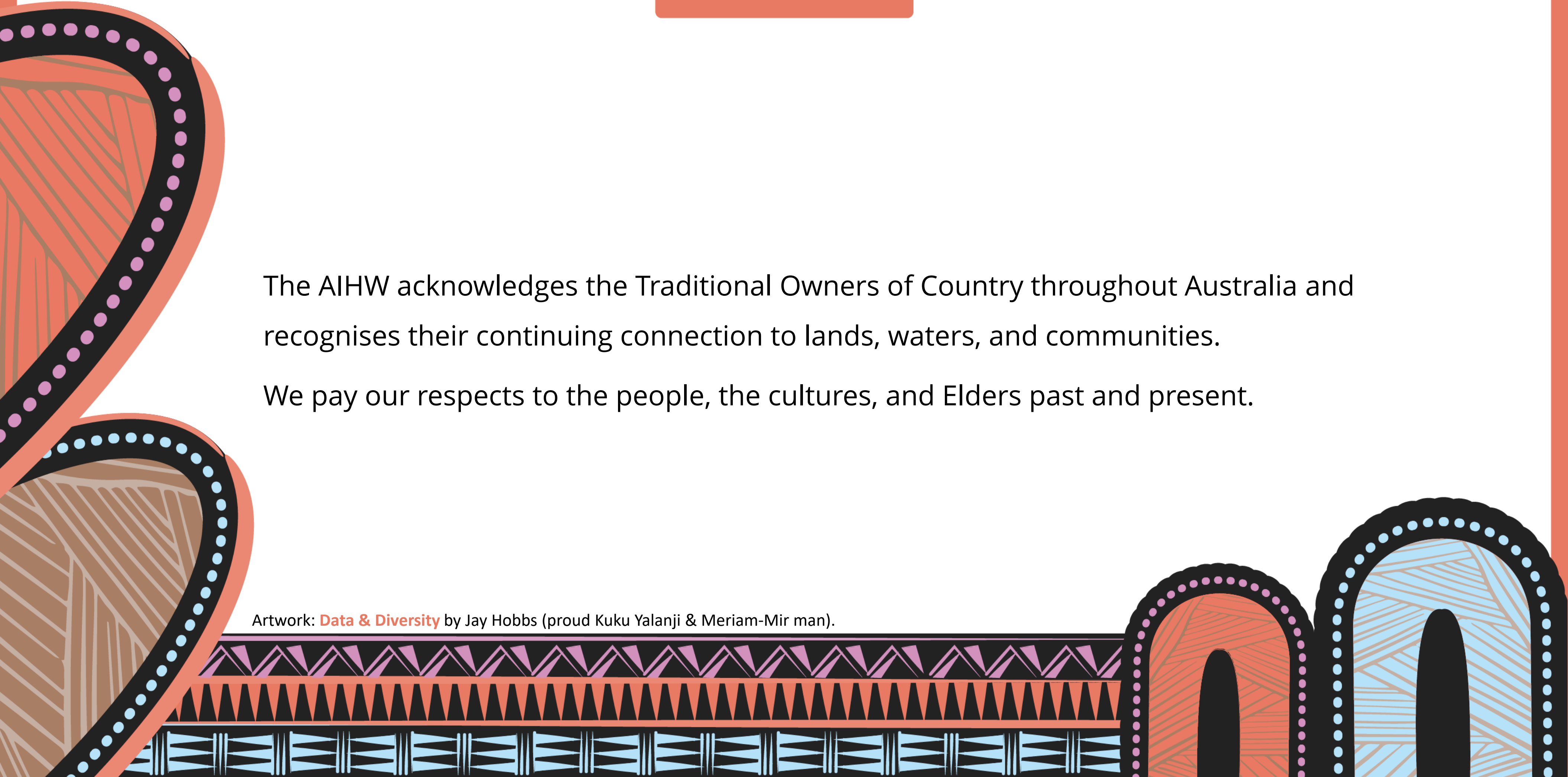
Australian Government

Australian Institute of
Health and Welfare

Development and presentation of ambulance attendance data for timely national reporting on alcohol and other drugs, mental health, and suicidal thoughts and behaviours

Louise Tierney & Chris Killick-Moran, Australian Institute of
Health and Welfare

30th October 2024, APSAD Annual Scientific Conference

The page is decorated with traditional Aboriginal art motifs. On the left side, there are two large, overlapping circular shapes. The top one is orange with a black border of purple dots, and the bottom one is brown with a black border of blue dots. At the bottom of the page, there is a horizontal band of geometric patterns: a row of purple triangles, a row of orange triangles, and a row of blue and white geometric shapes. To the right of this band, there are two more circular shapes, one orange and one blue, both with black borders of dots. The entire page is framed by a thick orange border on the top and right sides.

The AIHW acknowledges the Traditional Owners of Country throughout Australia and recognises their continuing connection to lands, waters, and communities.

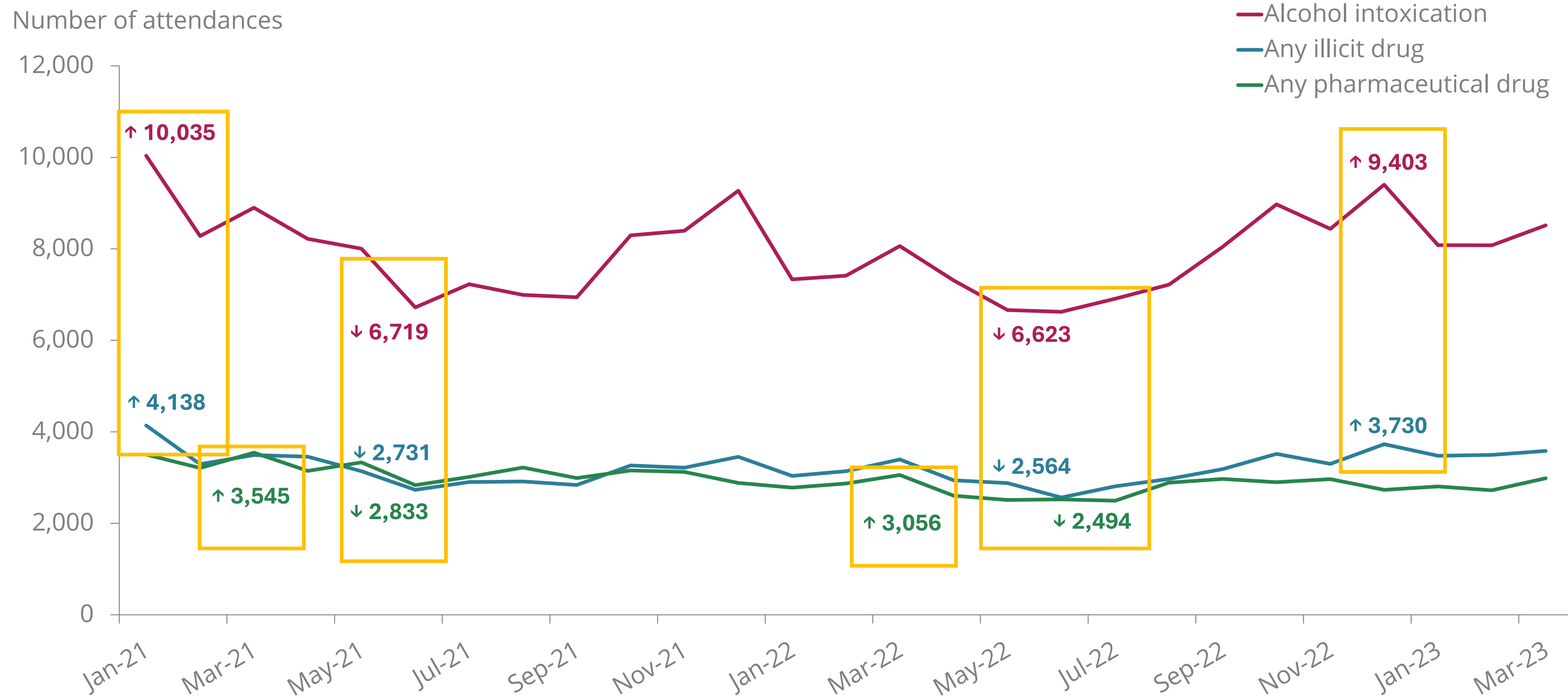
We pay our respects to the people, the cultures, and Elders past and present.

Artwork: **Data & Diversity** by Jay Hobbs (proud Kuku Yalanji & Meriam-Mir man).

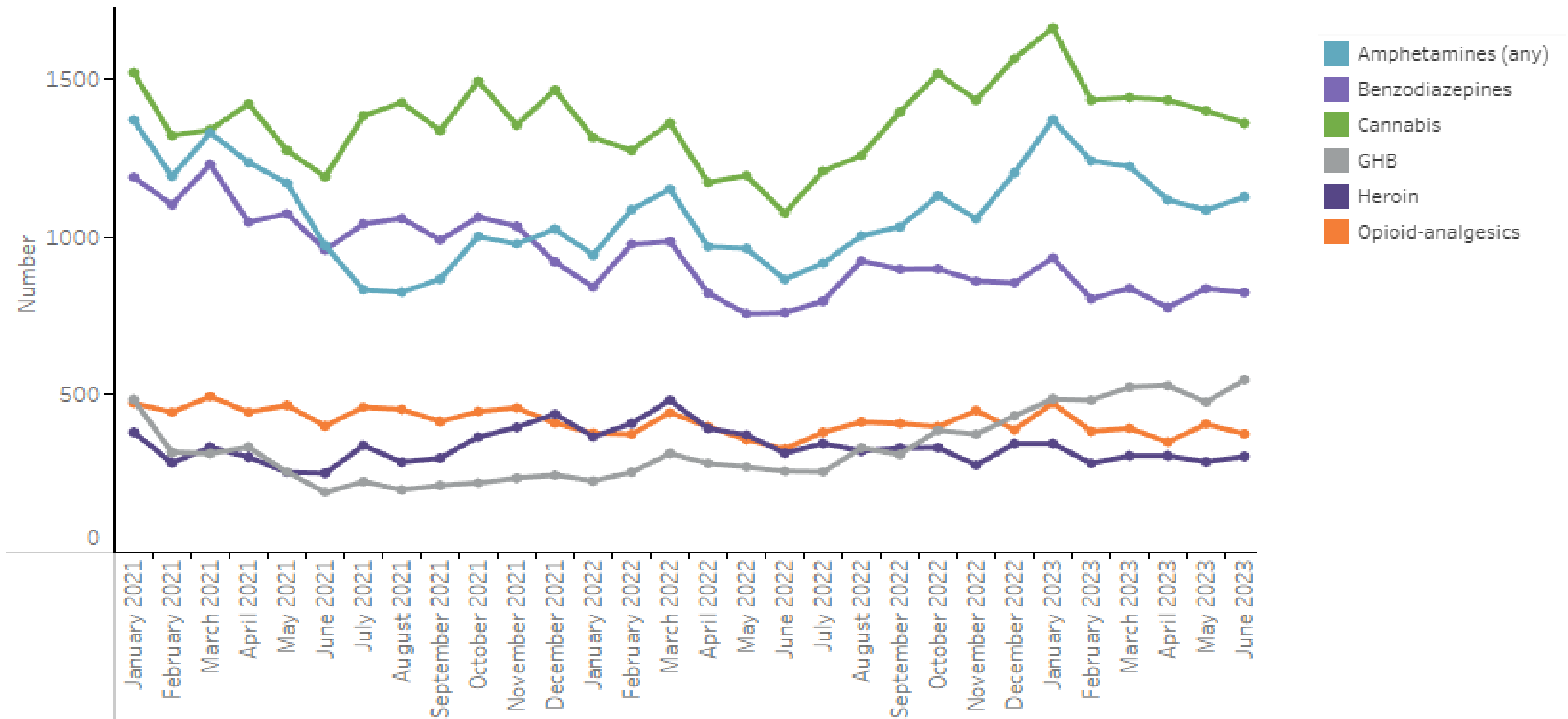
National Ambulance Surveillance System

- A novel, world-first public health monitoring system for mental health, alcohol and drug harms, and self-harm (including suicidal behaviours)
- Established in 2020, with components funded by the AIHW, the Australian Government Department of Health and Aged Care, and the Victorian Department of Health.
- Partnership between Turning Point at Monash University and state and territory ambulance services in New South Wales, Victoria, Queensland, Tasmania, the Australian Capital Territory and the Northern Territory.
- Turning Point receives and codes ambulance electronic patient care records (ePCR) for attendances relating to alcohol and other drugs (AOD), mental health, and suicide and self-harm for participating states and territories.
- AIHW receives, analyses and publishes the nationally consistent coded ambulance data
 - AIHW Suicide and Self-harm Monitoring website and Analyst Portal
 - Alcohol, tobacco & other drugs in Australia report

Drug-related attendances (selected states/territories, 2021–23)



Drug involvement (selected states/territories, 2021–23)

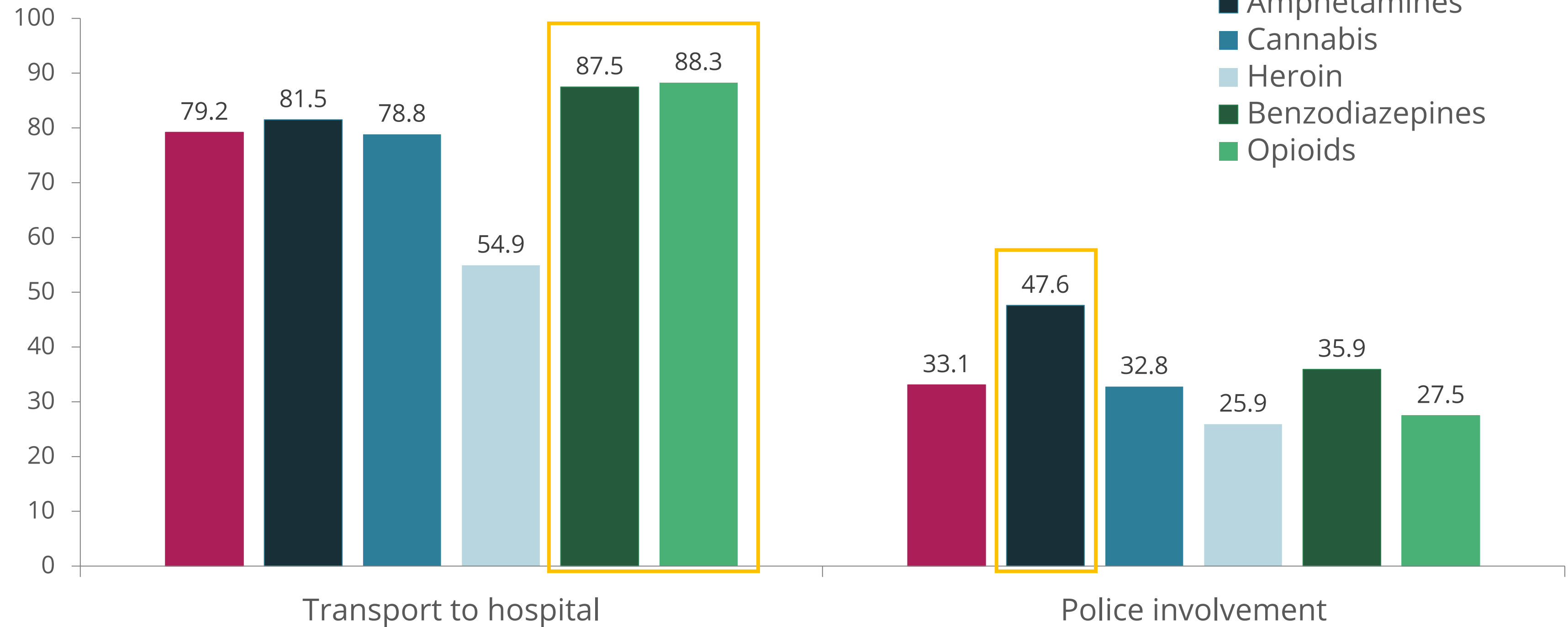


Notes:

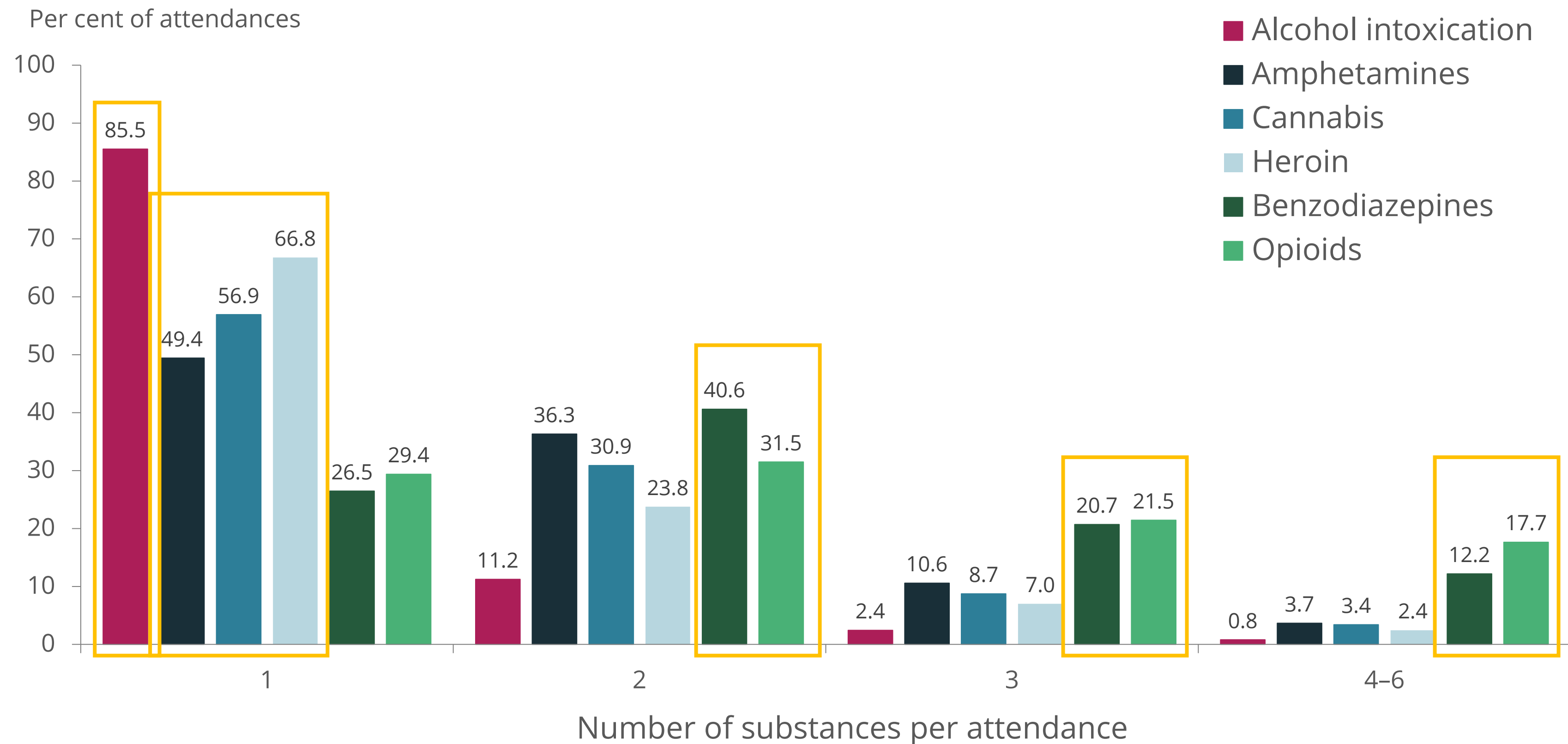
1. Includes data for 6 of the 8 Australian states & territories (Victoria, New South Wales, Queensland, Tasmania, the ACT & the NT).
2. Excludes people aged 14 and under.

Police involvement & transport to hospital (Victoria, 2022)

Per cent of attendances



Multiple drug involvement (Victoria, 2022)

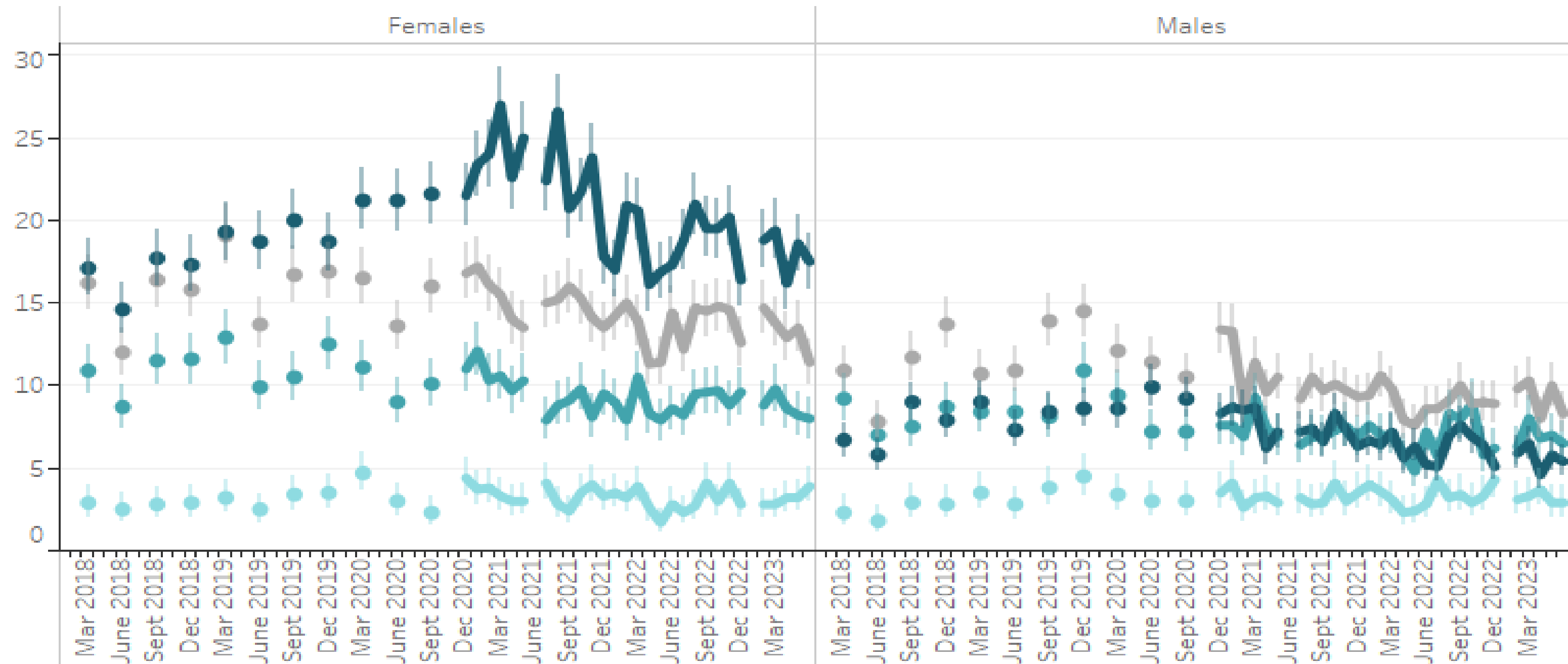


Notes:

1. Excludes people aged 14 and under.
2. Excludes ambulance attendances for suicide and self-harm.
3. Excludes ambulance attendances involving 7 or more substances (n <5).

Attendances for suicide attempt (selected states and territories, 2018-23)

Crude Rate (per 100,000) | Suicide attempt



Select data from:

Jan 2018



June 2023

0-24

25-44

45-64

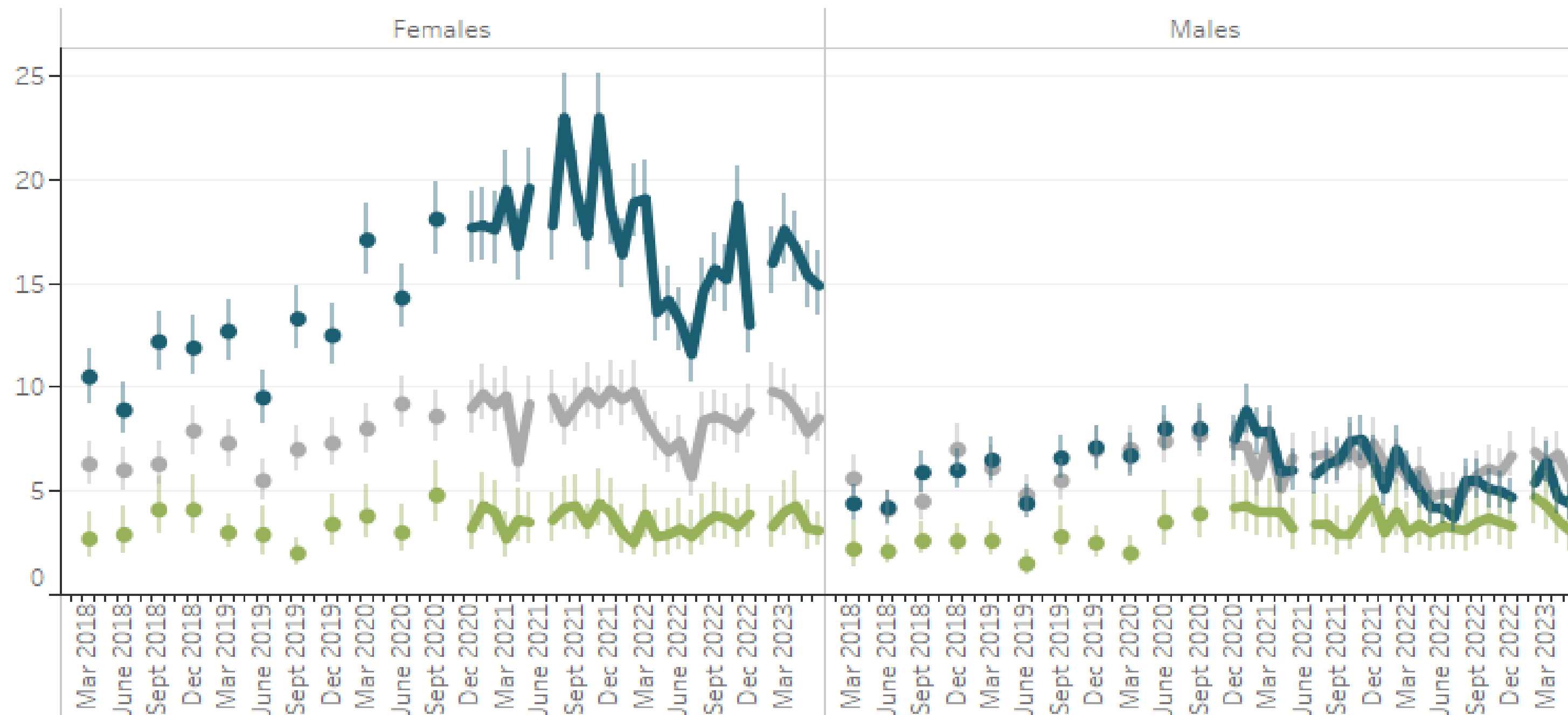
65+

Notes:

1. Data for Qld and the NT are excluded due to data gaps: Qld from March 2018 to December 2019, and NT from March 2019 to December 2020.
2. Dots represent March 2018 to December 2020 with data from snapshot months March, June, September, and December. Lines represent January 2021 to June 2023 with monthly data.

Attendances for self-injury (selected states and territories, 2018-23)

Crude Rate (per 100,000) | Self-injury



Select data from:

Jan 2018



June 2023

0-24

45+

25-44

Notes:

1. Data for Qld and the NT are excluded due to data gaps: Qld from March 2018 to December 2019, and NT from March 2019 to December 2020.
2. Dots represent March 2018 to December 2020 with data from snapshot months March, June, September, and December. Lines represent January 2021 to June 2023 with monthly data.



Alcohol & other
drug content



Suicide & self-harm
monitoring site