

The Development of a Stable Ground: A Stepped-Care Approach to Address Substance Use in Public Safety Personnel

Jayden Sercombe¹, Amelia Henry¹, Coleen Leung¹, Christina Marel¹, Alana Fisher¹, Emma Barrett¹, Mary Lou Chatterton², Logan Harvey¹, Frances Kay-Lambkin³, Natalie Peach¹, Matthew Sunderland¹, Maree Teesson¹, Katherine Mills¹

¹ The Matilda Centre for Research in Mental Health and Substance Use, University of Sydney

² Monash University

³ University of Newcastle

Funded by icare NSW

PROJECT Background

Public safety personnel (e.g., paramedics, firefighters, police, correctional officers) are an integral part of the frontline workforce.



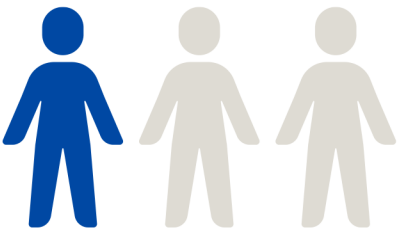
Research has found high rates of problematic substance use in this population.

Alcohol and other drugs are used to cope with trauma, but only provide short-term relief.

Study Overview

Survey (n = 539) asking about substance use, mental health and help-seeking

1 in 3 reported harmful alcohol use



Facilitators to seeking help

- 88% Accepting and supportive manager
- 85% Confidentiality from manager

Barriers to seeking help

- 86% Concerns about career harm
- 80% Worries about confidentiality
- 81% Perception by colleagues

- 43% viewed colleagues more positively
- 1% viewed colleagues more negatively

Seeking treatment for substance use

Care Framework

STEP 3

*Universal component
^Targeted component

SPECIALIST REFERRAL^

STEP 2

PEER SUPPORT*

GP REFERRAL^

BRIEF INTERVENTION^

STEP 1

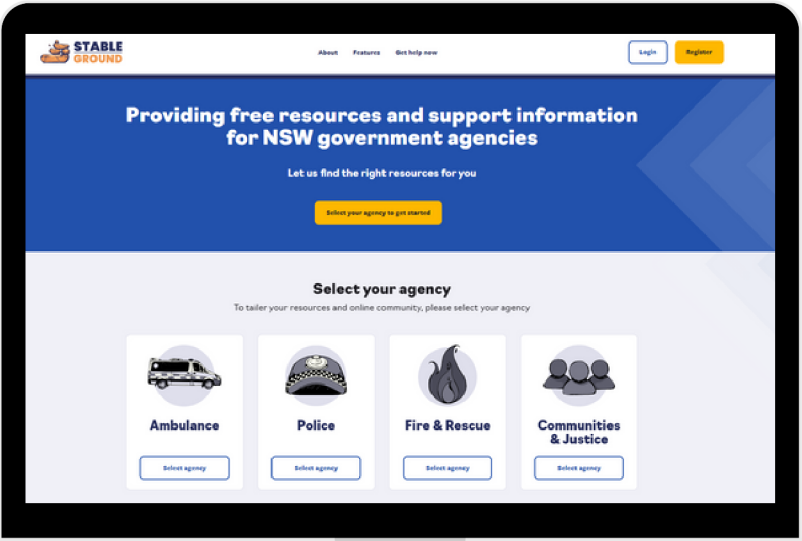
SCREENING AND PERSONALISED FEEDBACK*

PSYCHOEDUCATION*

Yet to develop symptoms

Early stages of symptom development/low-level symptoms

Established disorders/severe symptoms



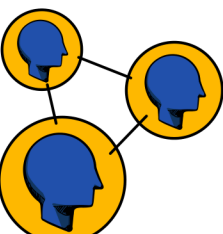
Factsheets

Access evidence-based info about alcohol, drugs and where to find help.



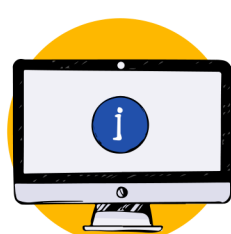
Self-assessment

Find out if your alcohol or drug use is putting you at risk of harm.



Community

Share your thoughts and experiences in a safe, anonymous environment.



Steady program

Learn helpful strategies and change your alcohol and drug use.

Next stages

Pilot trial

In two NSW public sector agencies

Evaluation

Using the RE-AIM framework

Upscaling

If successful, upscale to other agencies