

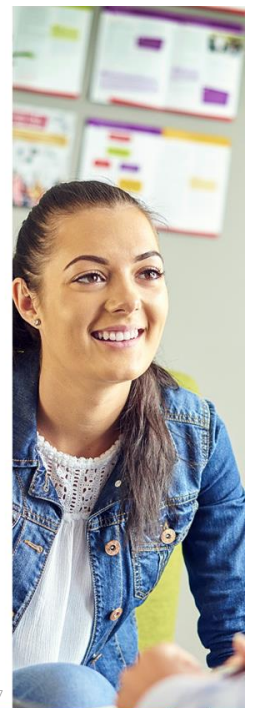
The Influence of Long Acting Reversible Contraception On Young Women's Sexual Practice, The Contraception and Sexual Practices Survey

Nguyen J, Williams H, McNamee K, Shafeeu N, Hocking JS.



Background

- ?LARC users less likely to use condoms
- Australian data
 - Parr: univariate, % using additional condoms
 - The pill 28.4 (25.4-31.4)
 - The implant 13.4 (6.0-20.8)
- international data
 - generally lower odds of using condoms with LARC compared to the pill
 - studies x 2 indicating no ↑chlamydia rates in LARC users



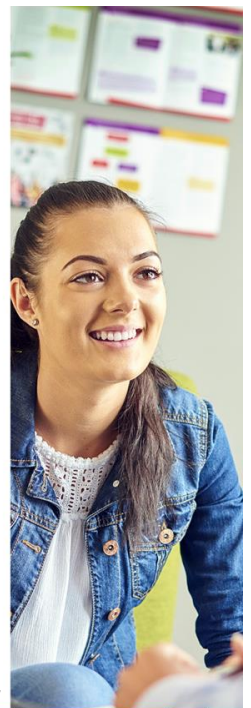
Research question

- Are IUD and implant users less likely to use condoms than young women using other non-barrier contraceptive methods (e.g. oral contraceptive use)?



Study Population

- women presenting to a dedicated CBD reproductive and sexual health service for young people
- inclusion criteria:
 - aged 16-24
 - capacity to consent to participate
 - penile-vaginal intercourse
- detailed written survey
- 96.8% participation (n=294)
- ethics approval: Melbourne School of Population and Global Health) Human Ethics Advisory Group



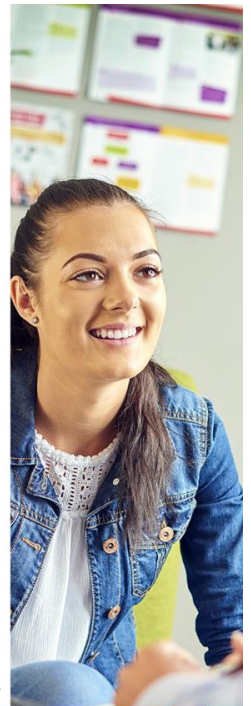
Demographics and data

- LARC use (n=69) 23.8% (Sex in Australia 5.9% aged 20-29 years)
- Other hormonal contraception (n=121): oral contraception (n=108), DMPA (n=12) vaginal ring (n=1)
 - no significant differences between the groups for age, education and ethnicity
 - mean and median age 21 years
 - 15.6% born OS (ABS 2011: 20-24 years 24%)
 - lifetime sexual partners mean 13, median 7 (Sex in Australia 20-29 years mean 4.9)
 - ever had an unintended pregnancy 7.3%
 - chlamydia positive at visit or within last 3/12, 3.9%



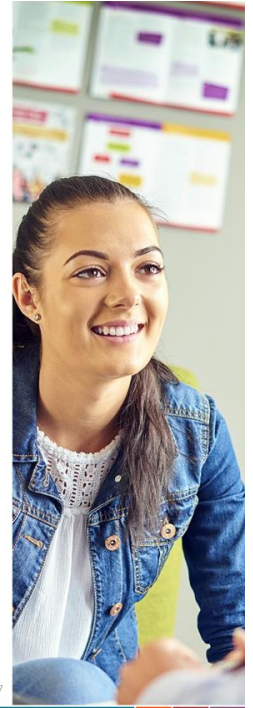
Findings

- hormonal contraception users
 - 23.0% used condoms at last sex (95%CI 17.2-30.0) and 27.2% used condoms usually/always (95%CI 20.1-34.2).
- no difference in condom use usually/always or at most recent sex between LARC users and other hormonal contraceptive users



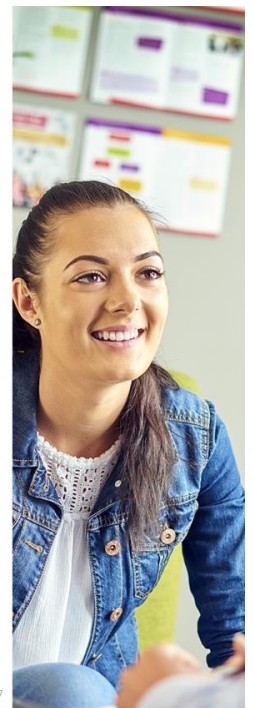
Hormonal contraception and condom use

Variables		OR (95% CI)	p	aOR (95% CI)	p
Condom use	choice of contraception				
Usually or always	Other hormonal (N=121)	REF		REF	
	LARC (N=69)	0.9 (0.5-1.8)	0.79	0.7 (0.3- 1.5)	0.32
At last sex	Other hormonal	REF		REF	
	LARC	1.2(0.6-2.3)	0.67	1.2 (0.6-2.5)	0.56



Significant factors

Factors associated with dual use			
	aOR	95% CI	p
>5 sexual partner in past 3/12	3.3	1.1-10.0	0.02
Relationship length >6/12	0.2	0.1-0.5	<0.01
Factors associated with LARC use			
Unintended pregnancy	6.0	1.5-23.0	<0.01
Adjusted for demographic factors			



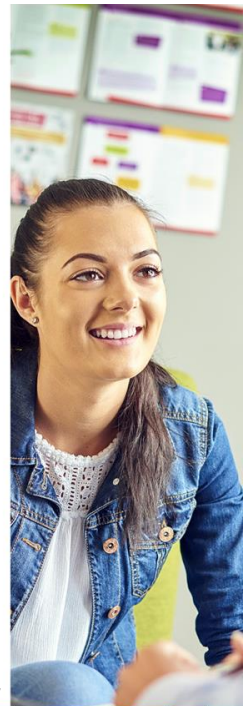
Factors associated with condom use

Situations that incline users to use condoms			
	Other hormonal N (%)	LARC N (%)	OR (95% CI)
Worried about pregnancy	76 (62.8)	33 (47.8)	0.6 (0.3-1.0)
Worried that partner has sex with other partners	94 (77.7)	51 (72.86)	0.8 (0.4-1.6)
Don't know the sexual partner	101 (83.5)	55 (79.7)	0.8 (0.4-1.7)
Worried about STIs	87 (71.9)	51 (73.9)	1.1 (0.6-2.2)



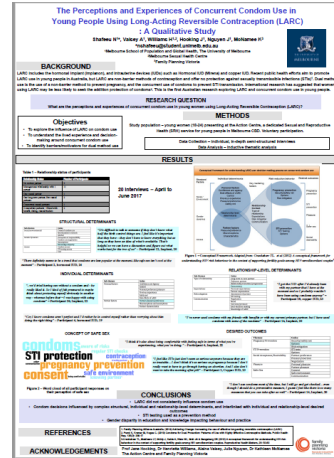
strengths and limitations

- limitations
 - participants attended a dedicated SRH clinic and may not be representative of the general population
 - 3.4% participants aged <18 years
 - cross sectional design
- strengths
 - high response rate
 - two markers of condom use included



Conclusion

- IUD and implant use was not associated with a lower rate of condom use compared to those using other hormonal contraception.
- Women appeared to self select condom use in relation to their perceived risk
- See poster 62 qualitative information



Thanks

- Participants
- FPV staff
- Mandy Johnson, Senior nurse at FPV
- Allan Patternot, lead receptionist FPV
- Julie Nguyen, Hennie Williams, Nabreesa Shafeeu and Jane Hocking