

3

Embracing peer-led approaches in the hepatitis C care cascade

Rochelle Aylmer, NSW Users and AIDS Association



A United Approach to Hepatitis C Elimination in NSW



EMBRACING PEER-LED APPROACHES IN
THE HEPATITIS C CARE CASCADE





Rochelle Aylmer | NSW Users and AIDS Association



NUAA
NSW USERS AND AIDS ASSOCIATION



ACKNOWLEDGEMENT OF COUNTRY



NUAA would like to acknowledge the Traditional Owners, Knowledge-holders and Custodians of the land and pay respects to Elders past, and present.

We recognise First Nations Peoples' unique cultural and spiritual relationships to place and the rich contribution made to society.





ACKNOWLEDGEMENT OF COMMUNITY

NUAA is a peer based, community-controlled drug user organisation. We represent the voices and needs of drug-using communities in NSW.

NUAA and the community of people who inject drugs were instrumental in averting the HIV epidemic and we remain central to improving the health and human rights of all People Who Use Drugs in NSW.

We would like to take this opportunity to acknowledge the legacy of the peers who went before us and reaffirm our commitment to fighting the effects of stigma and criminalisation in all their manifestations.










TABLE OF CONTENTS



01

INTRODUCTION

Background and history of NUAA



02

PEER-LED APPROACHES

NUAA's peer-led programs and services



03






HEP C PROJECTS


Point-of-care (POC) and Dried Blood Spot (DBS) testing

04

PARTNERSHIPS

NUAA partnerships and collaborations





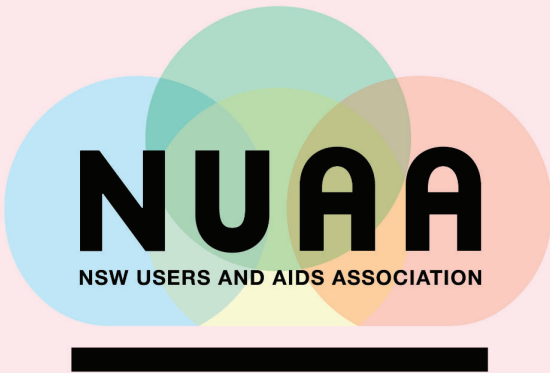
01

INTRODUCTION

Background and history of NUAA



ABOUT NUAA



The NSW Users and AIDS Association (NUAA) is a peer-based drug user organisation.

NUAA strives to improve our advocacy for, and services supporting, the diversity of people impacted by stigma and discrimination caused by the criminalisation of drug use across NSW through working with a broad range of stakeholders and partners to support system change.

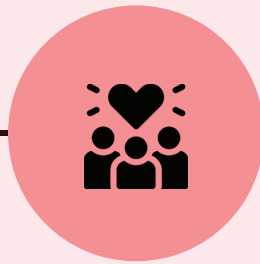


OUR HISTORY



ESTABLISHED 1989

- Formed in the face of a growing HIV epidemic
- Established by group of drug users, their friends, families and supporters
- Formerly AIDS Drug Information Collective (ADIC)



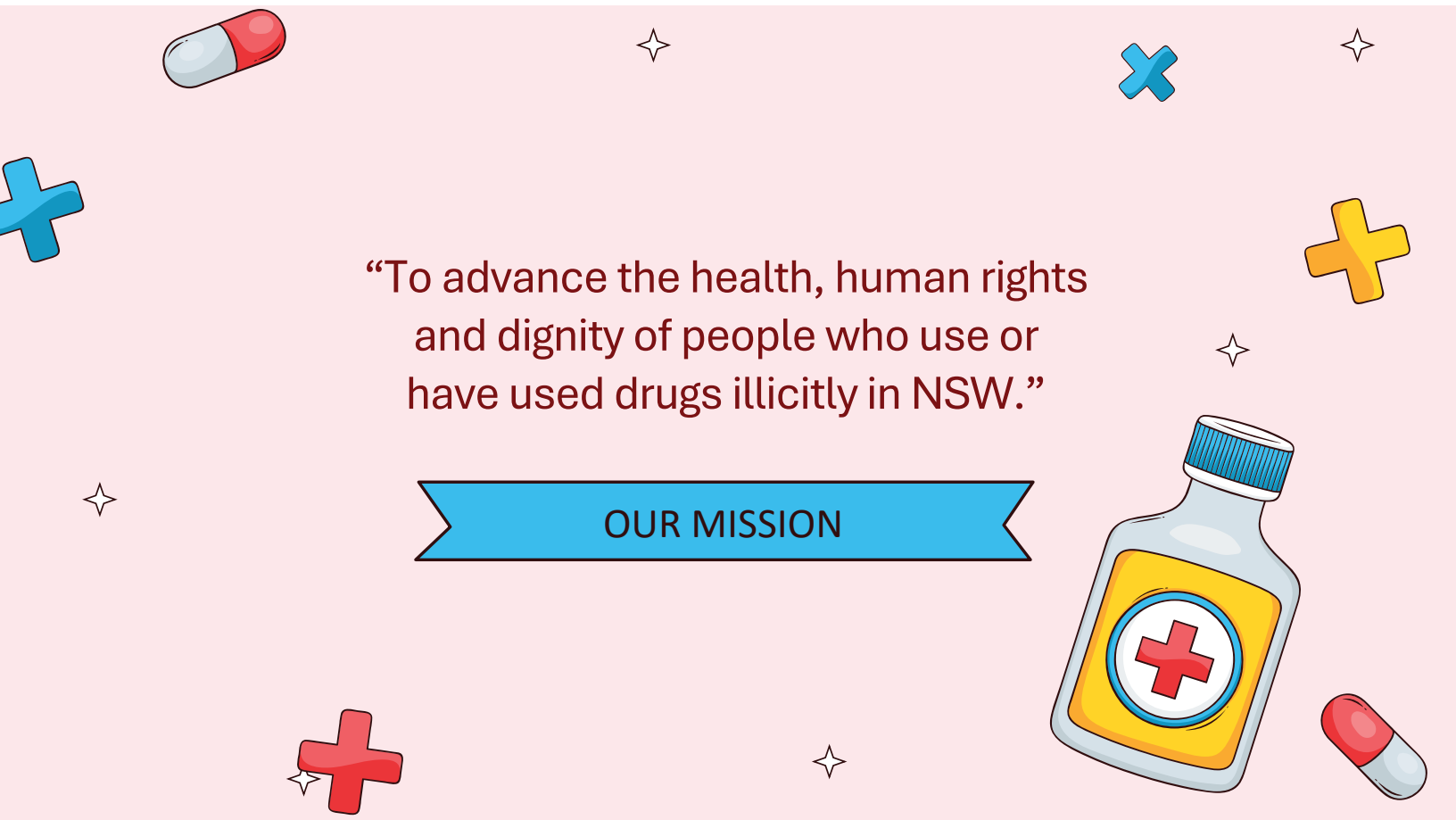
COMMUNITY LED

- Independent, user-driven community-based organization
- Governed, staffed and led by people with lived and living experience of drug use



GOVERNMENT FUNDED

- Funded primarily by NSW Ministry of Health
- Continuously funded for over 30 years
- Not-for-profit, ACNC registered charity



“To advance the health, human rights
and dignity of people who use or
have used drugs illicitly in NSW.”

OUR MISSION



NUAA PROGRAMS

EMBRACING PEER-LED MODELS OF CARE

PEER-LED PROGRAMS



NEEDLE SYRINGE
PROGRAM



OUTREACH AND PEER
SUPPORT



PEERLINE



OPEN CLINIC ON
CROWN



PEER WORKFORCE
DEVELOPMENT



DANCEWIZE
NSW



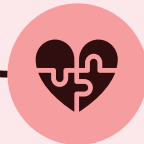
VOLUNTEER PROGRAMS

KEY PEER EDUCATORS DANCEWIZE



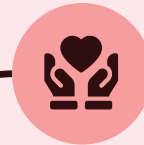
- Volunteers providing harm reduction at music festivals and licenced venues
- Includes care space, education outpost and roving teams
- Harm reduction training provided to security and event/venue staff

- Volunteer NSP workers deployed at NUAA's fixed site NSP
- Extensive training including workforce basics and soft skills and NSP service delivery
- Work & Development Orders



PEER PARTICIPATION PROGRAM NUAA NSP

PEER DISTRIBUTION PROGRAM OUTREACH



- Volunteers distribute equipment within their local communities
- Now offering DBS testing to people accessing equipment
- Trained and credentialed to distribute naloxone in NSW



OTHER PROGRAMS AND SERVICES



PROFESSIONAL
DEVELOPMENT



ADVOCACY AND
REPRESENTATION



PUBLICATIONS
AND RESOURCES



PEERS AND
CONSUMERS
FORUM



TRAINING AND
EDUCATION



RESEARCH
CAPACITY
BUILDING



TOWARDS ELIMINATION

EMBRACING PEER-LED MODELS OF CARE



OPEN CLINIC ON CROWN

NUAA FIXED SITE NSP



PREVENTION



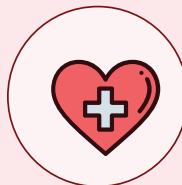
Sterile injecting equipment and ancillary items. State-wide postal NSP service.

TESTING & TREATMENT



Point-of-Care (POC) and Dried Blood Spot (DBS) testing facilitated by HCV Peer Worker

PEER SUPPORT



Peer-assisted treatment and care via nurse-based Open Clinic On Crown



PEERS ON WHEELS



PEER OUTREACH



PREVENTION

Delivering sterile injecting equipment and harm reduction resources across NSW



TESTING & TREATMENT

Mobile, point-of-care (POC) testing clinic operated by peers in collaboration with NSW Health



PEER SUPPORT

Linking people with local peer networks and peer distributors to access sterile equipment, peer education and support





PEER DISTRIBUTION



PEER OUTREACH



PREVENTION

NUAA volunteers distributing sterile injecting equipment and modeling of safer using



TESTING & TREATMENT

Peer Distributors facilitating Dried Blood Spot (DBS) testing within their local communities



PEER SUPPORT

Peer-assisted treatment referral and follow-up to local care provider





HIGH INTENSITY TESTING IN NSW CORRECTIONAL CENTRES



PEER OUTREACH (IN PARTNERSHIP WITH JUSTICE HEALTH)



PREVENTION

HCV peer education, harm reduction resources, strategies for safer using



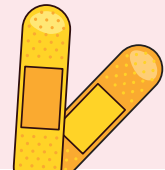
TESTING & TREATMENT

Work with Justice Health NSW to support High Intensity (HCV) Testing in NSW correctional centres



PEER SUPPORT

Insiders News is a harm reduction resource produced by NUAA and distributed through NSW correctional centres





A CASE FOR PEER-BASED APPROACHES

- Awareness-raising and myth-busting
- Addressing stigma
- Extended reach
- Tackling misinformation
- Influencing the care pathway
- Encouraging a greater emphasis on 'quality of care'
- Perceived as "experts"
- Prosocial behaviour
- Emotional support
- Experiences are normalized

PARTNERSHIPS AND COLLABORATION

MINISTRY OF HEALTH

CENTRE FOR POPULATION HEALTH

- Hepatitis Strategies Advisory Committee
- NSP Leadership Group

CENTRE FOR ALCOHOL AND OTHER DRUGS

- Consumer Reference Committee
- Consumer-Informed AOD Research and Analysis

- HCV high-intensity testing
- Insiders News
- Harm reduction workshops, publications and resources in custody
- Stigma and discrimination training

JUSTICE HEALTH

LOCAL HEALTH DISTRICTS

Peer and Consumer Workers in:

- Nepean Blue Mountains LHD
- Mid North Coast LHD
- Hunter New England LHD
- Western NSW LHD
- Far West LHD

MOUs in place with several other LHDs

PARTNERSHIPS AND COLLABORATION

RESEARCH INSTITUTES

- Australian Injecting and Illicit Drug Users League (AIVL)
- The Network Alcohol and Drugs Agencies (NADA)

KIRBY INSTITUTE
National Point Of Care Testing Program,
ETHOS, TEMPO, Peers On Wheels

CENTRE FOR SOCIAL RESEARCH IN HEALTH
Deadly Liver Mob, Stigma Research Stream

NOT-FOR-PROFIT & COMMUNITY ORGS

- Housing
- Homelessness
- Drug & Alcohol
- Community Health
- Local Drug Action Teams

PEAK ORGANISATIONS

BURNET INSTITUTE | EC AUSTRALIA
“It’s Your Right”

NON-GOVERNMENT

NATIONAL CENTRE FOR CLINICAL RESEARCH ON EMERGING DRUGS
NATIONAL DRUG AND ALCOHOL RESEARCH CENTRE



THANKS!

DO YOU HAVE ANY QUESTIONS?

Rochelle Aylmer
+61 2 9171 6666 | +61 433 360 768
rochellea@nuaa.org.au

