

THE CRITICAL ROLE OF PEERS IN FACILITATING CARE FOR PEOPLE WHO USE DRUGS

Jennifer Broad

Community Support Worker

Toronto Community Hep C Program



TORONTO COMMUNITY
HEP C PROGRAM





EXIT

moving forward...
Restructuring!

A poster titled "moving forward... Restructuring!" is pinned to the wall. It contains several columns of text, likely a project plan or organizational chart, with various headings and sub-points. The text is too small to read clearly but appears to be a structured document.



Out of the depths of my despair
And the ashes that were my life
I arose renewed and blessed
Hep C is not a death sentence
But rather life affirming
Such is the duality of nature and opposites
Each exists and is defined by the other
At the end
Positive or Negative?
Either way it will have been a blessing

Jennifer B.



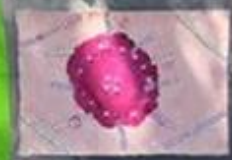
Over Hepatitis Day

Toronto Co

JULY 28

WORLD HEPATITIS
DAY

2015





KNOW YOUR
STATUS?
GET TESTED
WORLD HEPATITIS DAY
JULY 28
www.hfdcmneda.org

KNOW YOUR
STATUS?

KNOW YOUR
STATUS?
GET TESTED
WORLD HEPATITIS DAY
JULY 28
www.hfdcmneda.org

KNOW YOUR
STATUS?
GET TESTED
WORLD HEPATITIS DAY
JULY 28
www.hfdcmneda.org

KNOW YOUR
STATUS?

KNOW YOUR
STATUS?
GET TESTED
WORLD HEPATITIS DAY
JULY 28
www.hfdcmneda.org

KNOW YOUR
STATUS?
GET TESTED
WORLD HEPATITIS DAY
JULY 28
www.hfdcmneda.org

KNOW YOUR
STATUS?
GET TESTED
WORLD HEPATITIS DAY
JULY 28
www.hfdcmneda.org

KNOW YOUR
STATUS?
GET TESTED
WORLD HEPATITIS DAY
JULY 28
www.hfdcmneda.org

KNOW YOUR
STATUS?
GET TESTED
WORLD HEPATITIS DAY
JULY 28
www.hfdcmneda.org



WIPE OUT
HEP C

TOO SICK
TOO HEALTHY
TOO YOUNG
TOO OLD

TOO SICK
TOO HEALTHY
TOO YOUNG
TOO OLD

WIPE OUT
HEP C

HEP C
TREATMENT
FOR ALL

HEPC TREATMENT FOR ALL
GENOTYPE ONE
WHERE ARE MY MEDS!

STOP
THE
DISCRIMINATION

TOO SICK
TOO HEALTHY
TOO YOUNG
TOO OLD

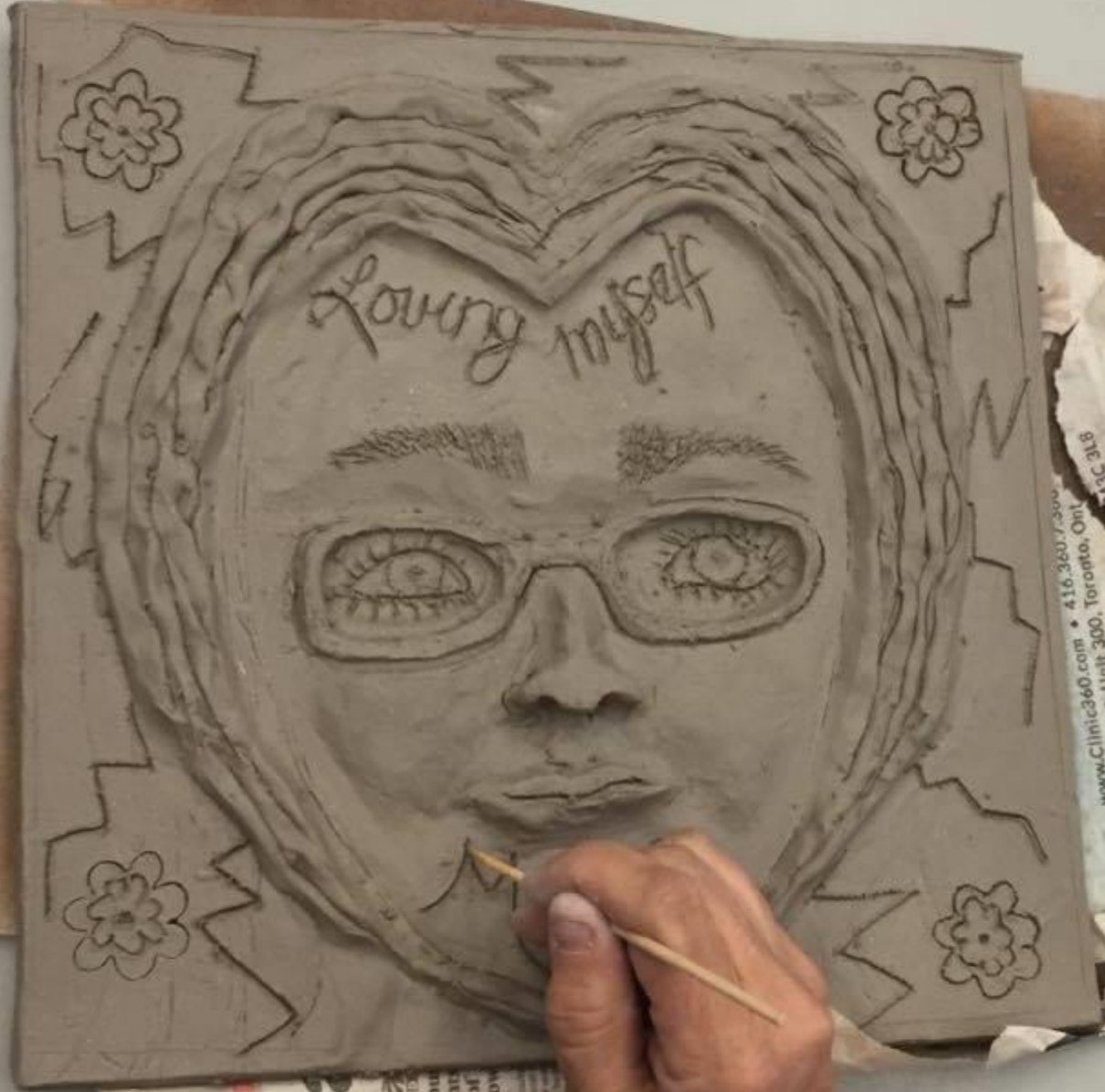
TOO SICK
TOO HEALTHY
TOO YOUNG
TOO OLD

HEP C
TREATMENT
FOR ALL

TOO SICK
TOO HEALTHY
TOO YOUNG
TOO OLD

THANK PEOPLE ON
OUTSIDES WHO
HELP US
ALWAYS NOW





Loving myself

www.Clinic360.com • 416.360.7300
1131A Leslie Street, Unit 300, Toronto, Ont. M3C 3L8

Clinic
RAPID
Lowry point
in 35 points
in front of
home grow

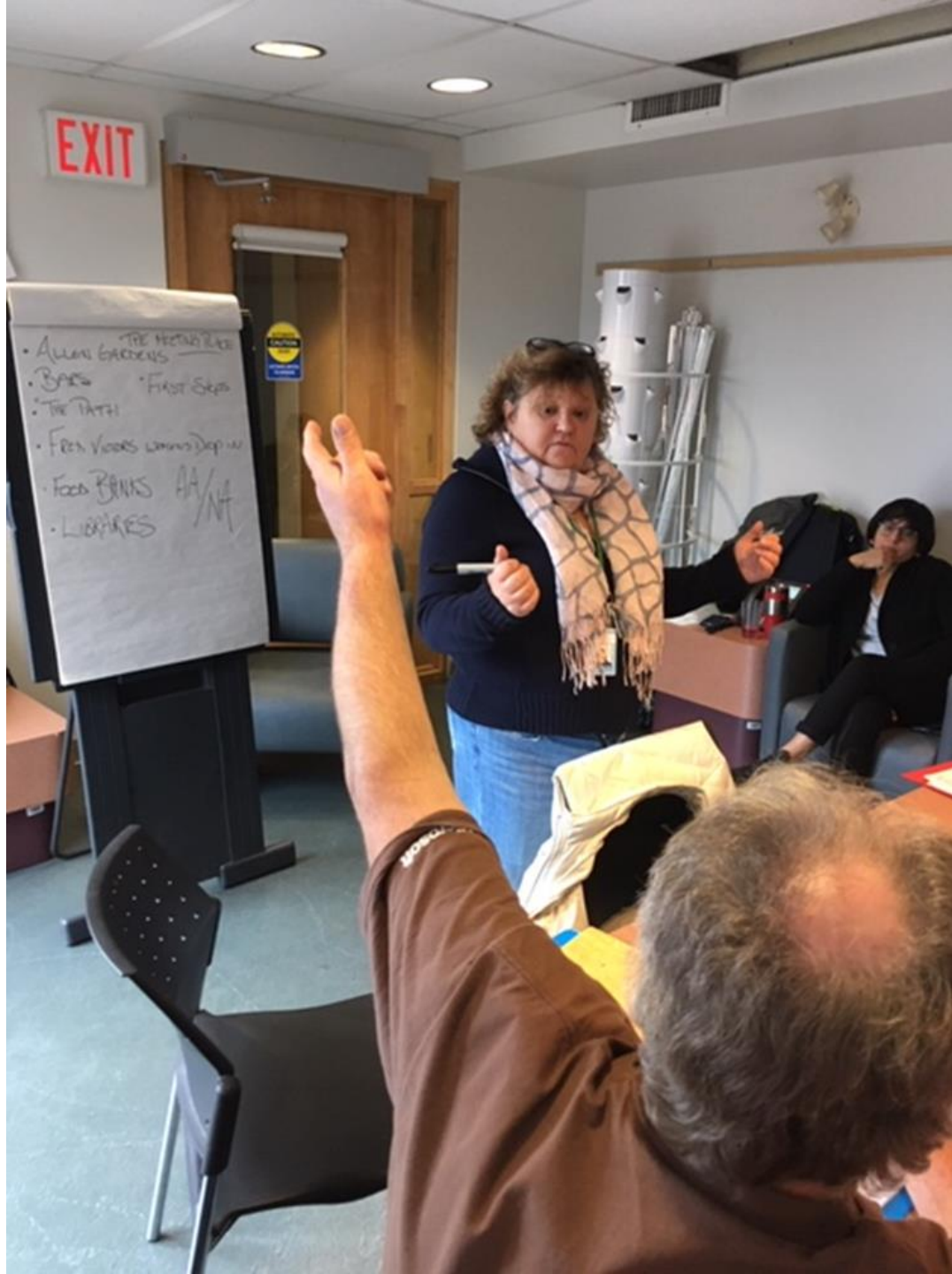


Regent Park Community
which helped me to seek
myself more.





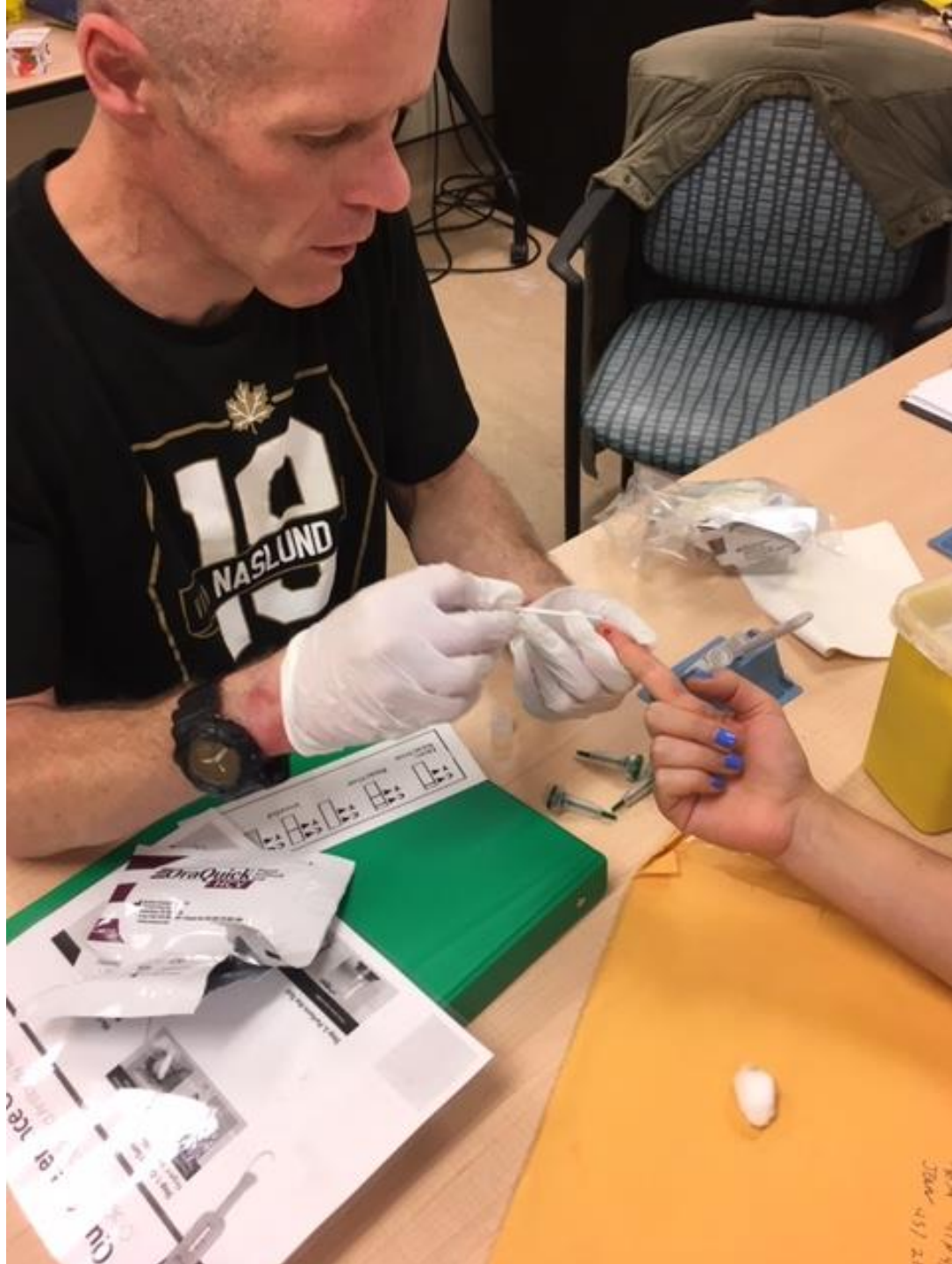




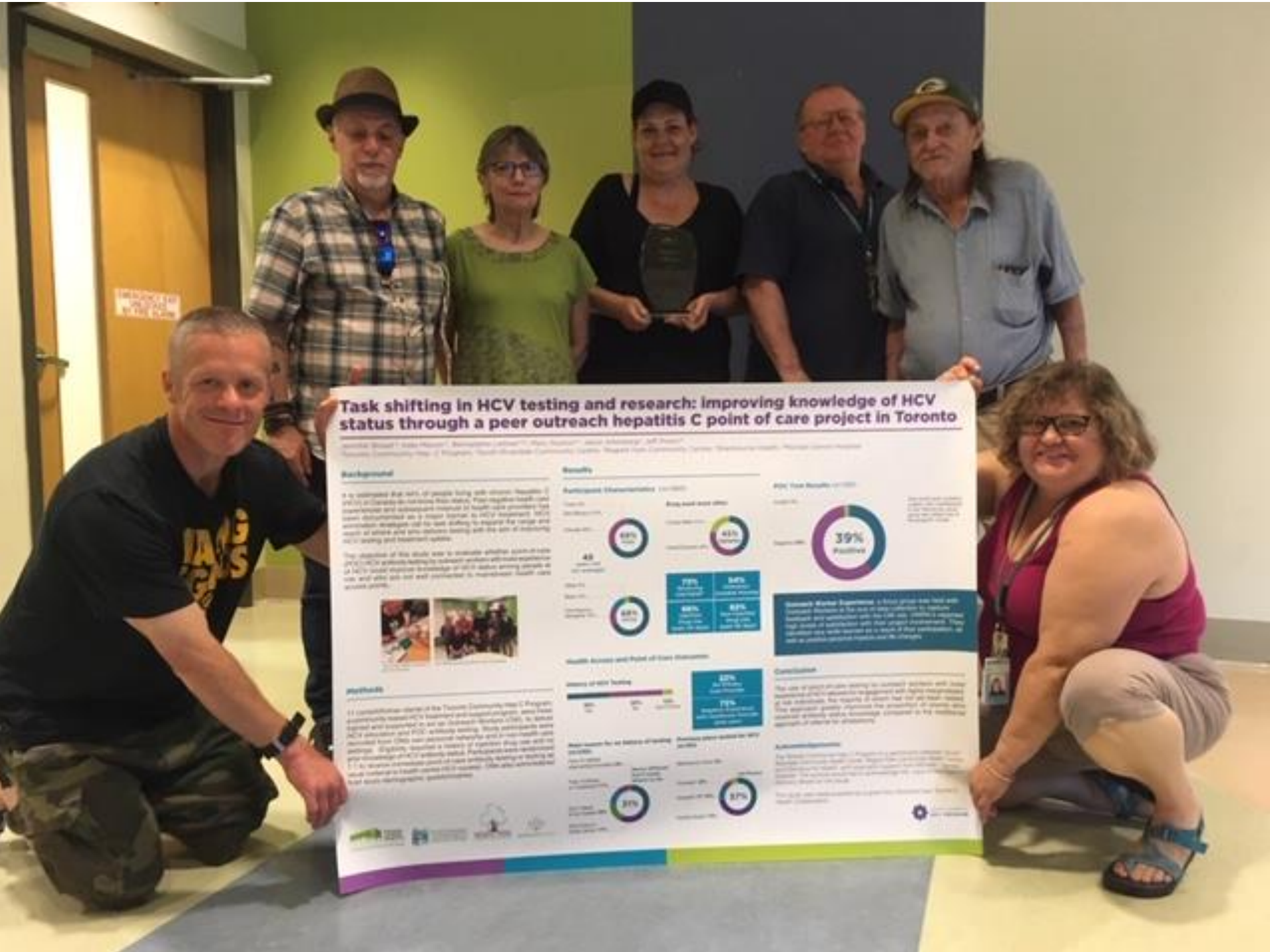
EXIT

THE HISTORY BOOK
• ALLIANCE PARTNERS
• BARRIS
• THE PARTH
• FROM VOICES TO WORDS
• FOOD PARTNERS AA/NA
• LITERATURE









Task shifting in HCV testing and research: Improving knowledge of HCV status through a peer outreach hepatitis C point of care project in Toronto

Authors: Brandi T. Cook-Morgan, Bernadette Williams, Mary Housh, and Anthony J. Pitt
Toronto Community Health Program, North-Scarborough Community Centre, Program Health Community Centre, Scarborough, Ontario, Canada

Background

It is estimated that 20% of people living with chronic hepatitis C (HCV) in Ontario do not know their status. Peer outreach health care workers and substance treatment or health care providers can provide education and peer support to help people get tested. This intervention was designed to test ability to expand the range and reach of advice and peer support being given to the aim of reducing HCV testing and treatment barriers.

The objectives of this study were to determine whether a point of care (POC) or walk-in testing location would increase awareness of HCV, and also test and evaluate the feasibility of a peer outreach health care worker role.



Methods

A 12-month pilot study of the Toronto Community Health Program (TCHP) community-based HCV testing and treatment program was designed and implemented in an inner-city Toronto, ON, to deliver HCV education and POC walk-in testing. Study participants were recruited from community-based networks and a recruitment site identified from a community-based network. Participants were screened for HCV antibody status. Participants were screened for HCV antibody status. Participants were screened for HCV antibody status. Participants were screened for HCV antibody status.

Results

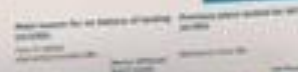
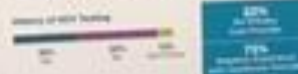
Participant Characteristics (n=100)



Key Test Results (n=100)



Health Access and Point of Care Assessment



Screening was successful in a short period of time and increased awareness of HCV in the community. The program was well-received by participants and staff. The program was well-received by participants and staff. The program was well-received by participants and staff.

Conclusions

The use of a point of care testing location was successful in increasing awareness of HCV in the community. The program was well-received by participants and staff. The program was well-received by participants and staff. The program was well-received by participants and staff.

Acknowledgements

The authors thank the staff of the Toronto Community Health Program for their support and assistance in conducting this study. The authors also thank the participants who took part in this study.







Please excuse our
appearance

suncoo

*“Most of the time my thoughts are bad,
sometimes my actions are worse,
but I’m tryin’ to be good and
one day I’ll be great.”*









GRADU

HCV PEER WORKER TRAINING
FOR INDIVIDUALS INTERESTED IN BECOMING A PEER WORKER
Doug J. Belanger
In recognition of completing all requirements of the
Hawaii Community Health Worker Training Program
This certificate is valid on the 1st day of June, 2018
Congratulations!
MAY 16, 2018
HAWAIIAN COMMUNITY HEALTH WORKER TRAINING PROGRAM

Congrats GRAD

YOU DID IT!

PLEASE LEAVE THE
EXTENSION & INTERCOM CORD
IN THE MEETING LOBBY

*Don't let *your* perceptions of my lived experience limit my potential. The more I am challenged, the more I rise and the more change we make happen.....*



RESOURCES

- **Toronto Community Hep C Program - Peer Manual: A guide and Resource for engaging with clients beyond service provision in a harm reduction setting.** Available at: srchc.ca
- Video that addresses common concerns and misconceptions about engaging with people who use drugs. Available at South Riverdale Community Health Centre's Youtube channel: **Toronto Community Hep C Program – Beyond Treatment; Involvement of People with Lived Experience**
- Tookey P, Mason K, Broad J, Behm M, Bondy L, Powis J. **From client to co-worker: a case study of the transition to peer work within a multi-disciplinary hepatitis c treatment team in Toronto, Canada.** *Harm Reduction J.* 2018. 15:41.
- **Harm Reduction at Work: A guide for organizations employing people who use drugs by Raffi Baillan.** Available at: <https://www.opensocietyfoundations.org>
- jbroad@srchc.com



TORONTO COMMUNITY
HEP C PROGRAM

ACKNOWLEDGEMENTS

- Program sites: Staff at South Riverdale Community Health Centre, Regent Park Community Health Centre and Sherbourne Health Centre
- TCHCP Patient Advisory Board
- Program funder: Hepatitis C Secretariat, AIDS and Hepatitis C Programs, Ontario Ministry of Health and Long-Term Care.
- Hundreds of clients who have accessed our program over the years

- **jbroad@srchc.com**
- Tookey P, Mason K, Broad J, Behm M, Bondy L, Powis J. **From client to co-worker: a case study of the transition to peer work within a multi-disciplinary hepatitis c treatment team in Toronto, Canada.** *Harm Reduction J.* 2018. 15:41.



TORONTO COMMUNITY
HEP C PROGRAM